

Home data report

**3710 East Mountain Road, Bartlesville, Washington County,
Oklahoma, United States, 74003**



1
Half baths



1
Garages

Home data report

3710 East Mountain Road, Bartlesville, Washington County, Oklahoma, United States, 74003



Room dimensions

Floor 1

Total:3369sqft

Excluded: 820sqft

#		Dimensions	sqft	Counted as living area
1	Bath	7'8" x 3'4"	25 sq. ft	Yes
2	Office	14'2" x 16'4"	231 sq. ft	Yes
3	Bedroom	16'1" x 21'9"	348 sq. ft	Yes
4	W.I.C.	7'2" x 9'7"	68 sq. ft	Yes
5	Bath	5'3" x 7'3"	38 sq. ft	Yes
6	Hall	5'0" x 4'2"	21 sq. ft	Yes
7	Living Room	22'10" x 24'4"	556 sq. ft	Yes
8	Hall	12'0" x 9'7"	114 sq. ft	Yes
9	Primary Bath	23'0" x 11'4"	260 sq. ft	Yes
10	W.I.C.	11'1" x 10'4"	115 sq. ft	Yes
11	Foyer	19'4" x 15'8"	303 sq. ft	Yes

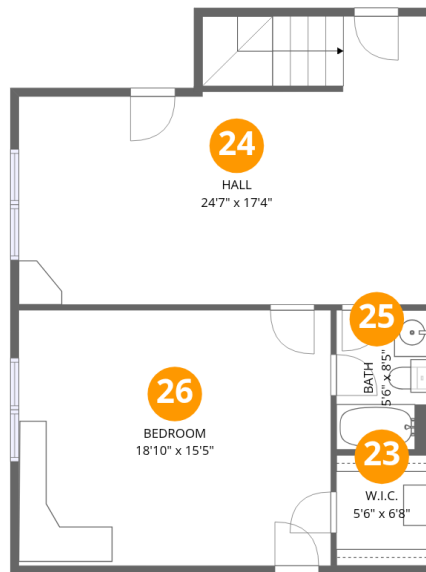
Home data report

3710 East Mountain Road, Bartlesville, Washington County, Oklahoma, United States, 74003

#		Dimensions	sqft	Counted as living area
12	Laundry	8'4" x 9'7"	80 sq. ft	Yes
13	Bath	8'9" x 4'6"	40 sq. ft	Yes
14	Garage	32'7" x 25'0"	815 sq. ft	No
15	W.I.C.	6'2" x 6'7"	41 sq. ft	Yes
16	W.I.C.	5'3" x 5'7"	29 sq. ft	Yes
17	Bath	4'9" x 13'6"	65 sq. ft	Yes
18	Eat-in Kitchen	24'4" x 28'7"	697 sq. ft	Yes
19	Pantry	6'2" x 8'11"	54 sq. ft	Yes
20	Primary Bedroom	22'9" x 15'11"	361 sq. ft	Yes
21	Office	16'6" x 12'6"	206 sq. ft	Yes
22	Bath	5'5" x 9'2"	49 sq. ft	Yes

Home data report

3710 East Mountain Road, Bartlesville, Washington County, Oklahoma, United States, 74003



Room dimensions

Floor 2

Total:760sqft

Excluded: 0sqft

#		Dimensions	sqft	Counted as living area
23	W.I.C.	5'6" x 6'8"	36 sq. ft	Yes
24	Hall	24'7" x 17'4"	427 sq. ft	Yes
25	Bath	5'6" x 8'5"	46 sq. ft	Yes
26	Bedroom	18'10" x 15'5"	289 sq. ft	Yes

3710 East Mountain Road, Bartlesville, Washington County, Oklahoma, United States, 74003

1 Floor 1 - Bath



Dimensions: 7'8" x 3'4"
Area: 25 sq. ft
Counted as living area: Yes

Heated: Yes
Finished: Yes
Enclosed: Yes
Contiguous: Yes
Permitted: Yes
Wet space: Yes
Addition: No
Conversion: No

2 Floor 1 - Office

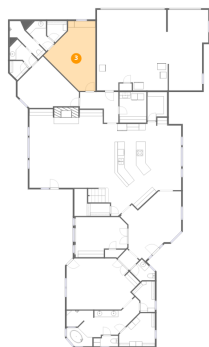


Dimensions: 14'2" x 16'4"
Area: 231 sq. ft
Counted as living area: Yes

Heated: Yes
Finished: Yes
Enclosed: Yes
Contiguous: Yes
Permitted: Yes
Wet space: No
Addition: No
Conversion: No

3710 East Mountain Road, Bartlesville, Washington County, Oklahoma, United States, 74003

3 Floor 1 - Bedroom



Dimensions: 16'1" x 21'9"
Area: 348 sq. ft
Counted as living area: Yes

Heated: Yes
Finished: Yes
Enclosed: Yes
Contiguous: Yes
Permitted: Yes
Wet space: No
Addition: No
Conversion: No

4 Floor 1 - W.I.C.



Dimensions: 7'2" x 9'7"
Area: 68 sq. ft
Counted as living area: Yes

Heated: Yes
Finished: Yes
Enclosed: Yes
Contiguous: Yes
Permitted: Yes
Wet space: No
Addition: No
Conversion: No

5 Floor 1 - Bath



Dimensions: 5'3" x 7'3"
Area: 38 sq. ft
Counted as living area: Yes

Heated: Yes
Finished: Yes
Enclosed: Yes
Contiguous: Yes
Permitted: Yes
Wet space: Yes
Addition: No
Conversion: No

3710 East Mountain Road, Bartlesville, Washington County, Oklahoma, United States, 74003

6 Floor 1 - Hall



Dimensions: 5'0" x 4'2"
Area: 21 sq. ft
Counted as living area: Yes

Heated: Yes
Finished: Yes
Enclosed: Yes
Contiguous: Yes
Permitted: Yes
Wet space: No
Addition: No
Conversion: No

7 Floor 1 - Living Room



Dimensions: 22'10" x 24'4"
Area: 556 sq. ft
Counted as living area: Yes

Heated: Yes
Finished: Yes
Enclosed: Yes
Contiguous: Yes
Permitted: Yes
Wet space: No
Addition: No
Conversion: No

8 Floor 1 - Hall

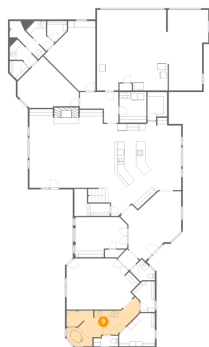


Dimensions: 12'0" x 9'7"
Area: 114 sq. ft
Counted as living area: Yes

Heated: Yes
Finished: Yes
Enclosed: Yes
Contiguous: Yes
Permitted: Yes
Wet space: No
Addition: No
Conversion: No

3710 East Mountain Road, Bartlesville, Washington County, Oklahoma, United States, 74003

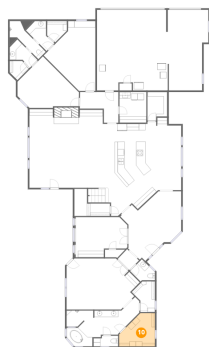
9 Floor 1 - Primary Bath



Dimensions: 23'0" x 11'4"
Area: 260 sq. ft
Counted as living area: Yes

Heated: Yes
Finished: Yes
Enclosed: Yes
Contiguous: Yes
Permitted: Yes
Wet space: Yes
Addition: No
Conversion: No

10 Floor 1 - W.I.C.



Dimensions: 11'1" x 10'4"
Area: 115 sq. ft
Counted as living area: Yes

Heated: Yes
Finished: Yes
Enclosed: Yes
Contiguous: Yes
Permitted: Yes
Wet space: No
Addition: No
Conversion: No

11 Floor 1 - Foyer

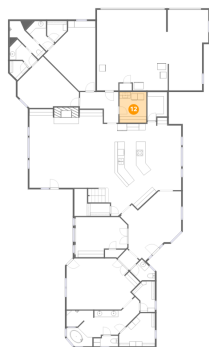


Dimensions: 19'4" x 15'8"
Area: 303 sq. ft
Counted as living area: Yes

Heated: Yes
Finished: Yes
Enclosed: Yes
Contiguous: Yes
Permitted: Yes
Wet space: No
Addition: No
Conversion: No

3710 East Mountain Road, Bartlesville, Washington County, Oklahoma, United States, 74003

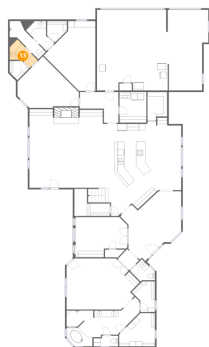
12 Floor 1 - Laundry



Dimensions: 8'4" x 9'7"
Area: 80 sq. ft
Counted as living area: Yes

Heated: Yes
Finished: Yes
Enclosed: Yes
Contiguous: Yes
Permitted: Yes
Wet space: No
Addition: No
Conversion: No

13 Floor 1 - Bath



Dimensions: 8'9" x 4'6"
Area: 40 sq. ft
Counted as living area: Yes

Heated: Yes
Finished: Yes
Enclosed: Yes
Contiguous: Yes
Permitted: Yes
Wet space: Yes
Addition: No
Conversion: No

14 Floor 1 - Garage

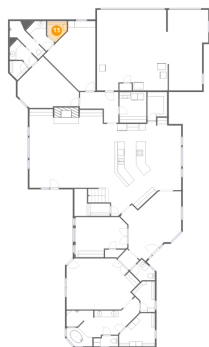


Dimensions: 32'7" x 25'0"
Area: 815 sq. ft
Counted as living area: No

Heated: No
Finished: No
Enclosed: Yes
Contiguous: Yes
Permitted: Yes
Wet space: No
Addition: No
Conversion: No

3710 East Mountain Road, Bartlesville, Washington County, Oklahoma, United States, 74003

15 Floor 1 - W.I.C.



Dimensions: 6'2" x 6'7"
Area: 41 sq. ft
Counted as living area: Yes

Heated: Yes
Finished: Yes
Enclosed: Yes
Contiguous: Yes
Permitted: Yes
Wet space: No
Addition: No
Conversion: No

16 Floor 1 - W.I.C.



Dimensions: 5'3" x 5'7"
Area: 29 sq. ft
Counted as living area: Yes

Heated: Yes
Finished: Yes
Enclosed: Yes
Contiguous: Yes
Permitted: Yes
Wet space: No
Addition: No
Conversion: No

17 Floor 1 - Bath



Dimensions: 4'9" x 13'6"
Area: 65 sq. ft
Counted as living area: Yes

Heated: Yes
Finished: Yes
Enclosed: Yes
Contiguous: Yes
Permitted: Yes
Wet space: Yes
Addition: No
Conversion: No

3710 East Mountain Road, Bartlesville, Washington County, Oklahoma, United States, 74003

18 Floor 1 - Eat-in Kitchen



Dimensions: 24'4" x 28'7"
Area: 697 sq. ft
Counted as living area: Yes

Heated: Yes
Finished: Yes
Enclosed: Yes
Contiguous: Yes
Permitted: Yes
Wet space: No
Addition: No
Conversion: No

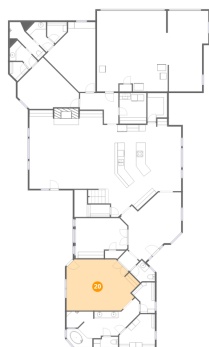
19 Floor 1 - Pantry



Dimensions: 6'2" x 8'11"
Area: 54 sq. ft
Counted as living area: Yes

Heated: Yes
Finished: Yes
Enclosed: Yes
Contiguous: Yes
Permitted: Yes
Wet space: No
Addition: No
Conversion: No

20 Floor 1 - Primary Bedroom



Dimensions: 22'9" x 15'11"
Area: 361 sq. ft
Counted as living area: Yes

Heated: Yes
Finished: Yes
Enclosed: Yes
Contiguous: Yes
Permitted: Yes
Wet space: No
Addition: No
Conversion: No

3710 East Mountain Road, Bartlesville, Washington County, Oklahoma, United States, 74003

21 Floor 1 - Office



Dimensions: 16'6" x 12'6"
Area: 206 sq. ft
Counted as living area: Yes

Heated: Yes
Finished: Yes
Enclosed: Yes
Contiguous: Yes
Permitted: Yes
Wet space: No
Addition: No
Conversion: No

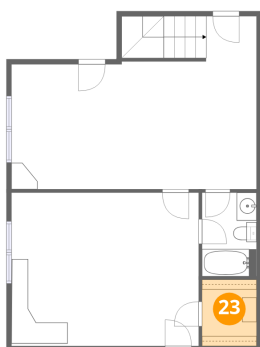
22 Floor 1 - Bath



Dimensions: 5'5" x 9'2"
Area: 49 sq. ft
Counted as living area: Yes

Heated: Yes
Finished: Yes
Enclosed: Yes
Contiguous: Yes
Permitted: Yes
Wet space: Yes
Addition: No
Conversion: No

23 Floor 2 - W.I.C.

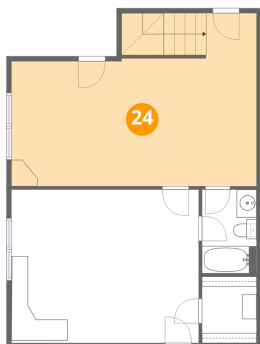


Dimensions: 5'6" x 6'8"
Area: 36 sq. ft
Counted as living area: Yes

Heated: Yes
Finished: Yes
Enclosed: Yes
Contiguous: Yes
Permitted: Yes
Wet space: No
Addition: No
Conversion: No

3710 East Mountain Road, Bartlesville, Washington County, Oklahoma, United States, 74003

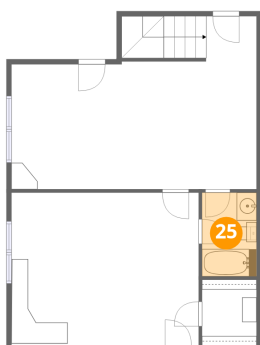
24 Floor 2 - Hall



Dimensions: 24'7" x 17'4"
Area: 427 sq. ft
Counted as living area: Yes

Heated: Yes
Finished: Yes
Enclosed: Yes
Contiguous: Yes
Permitted: Yes
Wet space: No
Addition: No
Conversion: No

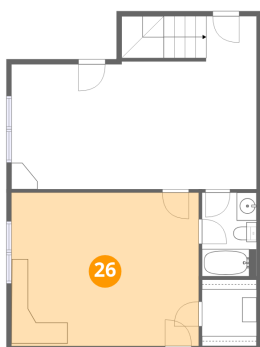
25 Floor 2 - Bath



Dimensions: 5'6" x 8'5"
Area: 46 sq. ft
Counted as living area: Yes

Heated: Yes
Finished: Yes
Enclosed: Yes
Contiguous: Yes
Permitted: Yes
Wet space: Yes
Addition: No
Conversion: No

26 Floor 2 - Bedroom



Dimensions: 18'10" x 15'5"
Area: 289 sq. ft
Counted as living area: Yes

Heated: Yes
Finished: Yes
Enclosed: Yes
Contiguous: Yes
Permitted: Yes
Wet space: No
Addition: No
Conversion: No