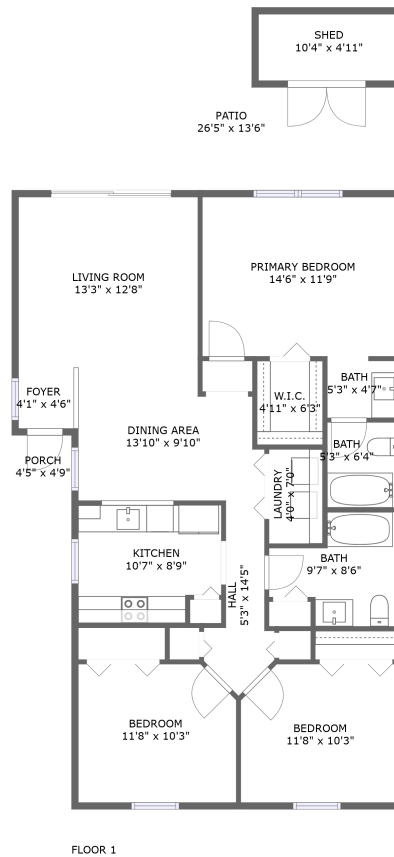


4246 NE 9th St, Homestead, FL, US



Property summary

 **0** Garages

 **3** Bedrooms

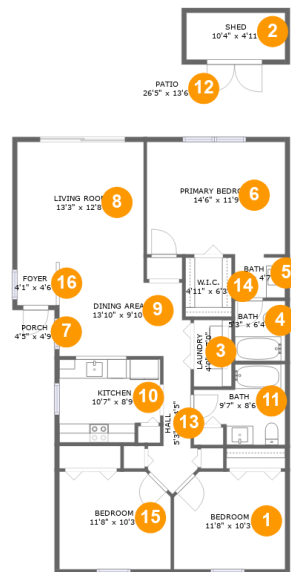
 **2** Bathrooms

 **0** Half baths

 **1** Floors

 **1,215** Gross living area sqft

 **1,594** Total sqft

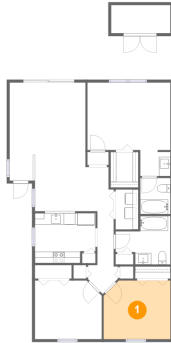
4246 NE 9th St, Homestead, FL, US**Room dimensions****Floor 1****Total sqft: 1594 Living area: 1215**

#		Dimensions	sqft	Counted as living area
1	Bedroom	11'8" x 10'3"	116 sq. ft	Yes
2	Shed	10'4" x 4'11"	51 sq. ft	No
3	Laundry	4'0" x 7'0"	28 sq. ft	Yes
4	Bath	5'3" x 6'4"	33 sq. ft	Yes
5	Bath	5'3" x 4'7"	23 sq. ft	Yes
6	Primary Bedroom	14'6" x 11'9"	172 sq. ft	Yes
7	Porch	4'5" x 4'9"	21 sq. ft	No
8	Living Room	13'3" x 12'8"	168 sq. ft	Yes
9	Dining Area	13'10" x 9'10"	122 sq. ft	Yes
10	Kitchen	10'7" x 8'9"	89 sq. ft	Yes
11	Bath	9'7" x 8'6"	62 sq. ft	Yes

4246 NE 9th St, Homestead, FL, US

#		Dimensions	sqft	Counted as living area
12	Patio	26'5" x 13'6"	292 sq. ft	No
13	Hall	5'3" x 14'5"	46 sq. ft	Yes
14	W.I.C.	4'11" x 6'3"	30 sq. ft	Yes
15	Bedroom	11'8" x 10'3"	117 sq. ft	Yes
16	Foyer	4'1" x 4'6"	20 sq. ft	Yes

1 Floor 1 - Bedroom



Dimensions: 11'8" x 10'3"
Area: 116 sq. ft
Counted as living area: Yes

Heated: Yes
Finished: Yes
Enclosed: Yes
Contiguous: Yes
Permitted: Yes
Wet space: No
Addition: No
Conversion: No

2 Floor 1 - Shed



Dimensions: 10'4" x 4'11"
Area: 51 sq. ft
Counted as living area: No

Heated: No
Finished: No
Enclosed: No
Contiguous: Yes
Permitted: Yes
Wet space: No
Addition: No
Conversion: No

3 Floor 1 - Laundry



Dimensions: 4'0" x 7'0"
Area: 28 sq. ft
Counted as living area: Yes

Heated: Yes
Finished: Yes
Enclosed: Yes
Contiguous: Yes
Permitted: Yes
Wet space: No
Addition: No
Conversion: No

4 Floor 1 - Bath



Dimensions: 5'3" x 6'4"
Area: 33 sq. ft
Counted as living area: Yes

Heated: Yes
Finished: Yes
Enclosed: Yes
Contiguous: Yes
Permitted: Yes
Wet space: Yes
Addition: No
Conversion: No

5 Floor 1 - Bath



Dimensions: 5'3" x 4'7"
Area: 23 sq. ft
Counted as living area: Yes

Heated: Yes
Finished: Yes
Enclosed: Yes
Contiguous: Yes
Permitted: Yes
Wet space: Yes
Addition: No
Conversion: No

4246 NE 9th St, Homestead, FL, US

6 Floor 1 - Primary Bedroom



Dimensions: 14'6" x 11'9"
Area: 172 sq. ft
Counted as living area: Yes

Heated: Yes
Finished: Yes
Enclosed: Yes
Contiguous: Yes
Permitted: Yes
Wet space: No
Addition: No
Conversion: No

7 Floor 1 - Porch



Dimensions: 4'5" x 4'9"
Area: 21 sq. ft
Counted as living area: No

Heated: No
Finished: Yes
Enclosed: No
Contiguous: Yes
Permitted: Yes
Wet space: No
Addition: No
Conversion: No

8 Floor 1 - Living Room



Dimensions: 13'3" x 12'8"
Area: 168 sq. ft
Counted as living area: Yes

Heated: Yes
Finished: Yes
Enclosed: Yes
Contiguous: Yes
Permitted: Yes
Wet space: No
Addition: No
Conversion: No

4246 NE 9th St, Homestead, FL, US

9 Floor 1 - Dining Area

Dimensions: 13'10" x 9'10"
Area: 122 sq. ft
Counted as living area: Yes

Heated: Yes
Finished: Yes
Enclosed: Yes
Contiguous: Yes
Permitted: Yes
Wet space: No
Addition: No
Conversion: No

10 Floor 1 - Kitchen

Dimensions: 10'7" x 8'9"
Area: 89 sq. ft
Counted as living area: Yes

Heated: Yes
Finished: Yes
Enclosed: Yes
Contiguous: Yes
Permitted: Yes
Wet space: No
Addition: No
Conversion: No

11 Floor 1 - Bath

Dimensions: 9'7" x 8'6"
Area: 62 sq. ft
Counted as living area: Yes

Heated: Yes
Finished: Yes
Enclosed: Yes
Contiguous: Yes
Permitted: Yes
Wet space: Yes
Addition: No
Conversion: No

12 Floor 1 - Patio



Dimensions: 26'5" x 13'6"
Area: 292 sq. ft
Counted as living area: No

Heated: No
Finished: Yes
Enclosed: No
Contiguous: Yes
Permitted: Yes
Wet space: No
Addition: No
Conversion: No

13 Floor 1 - Hall



Dimensions: 5'3" x 14'5"
Area: 46 sq. ft
Counted as living area: Yes

Heated: Yes
Finished: Yes
Enclosed: Yes
Contiguous: Yes
Permitted: Yes
Wet space: No
Addition: No
Conversion: No

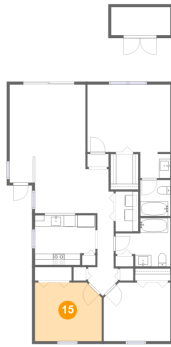
14 Floor 1 - W.I.C.



Dimensions: 4'11" x 6'3"
Area: 30 sq. ft
Counted as living area: Yes

Heated: Yes
Finished: Yes
Enclosed: Yes
Contiguous: Yes
Permitted: Yes
Wet space: No
Addition: No
Conversion: No

15 Floor 1 - Bedroom



Dimensions: 11'8" x 10'3"
Area: 117 sq. ft
Counted as living area: Yes

Heated: Yes
Finished: Yes
Enclosed: Yes
Contiguous: Yes
Permitted: Yes
Wet space: No
Addition: No
Conversion: No

16 Floor 1 - Foyer



Dimensions: 4'1" x 4'6"
Area: 20 sq. ft
Counted as living area: Yes

Heated: Yes
Finished: Yes
Enclosed: Yes
Contiguous: Yes
Permitted: Yes
Wet space: No
Addition: No
Conversion: No