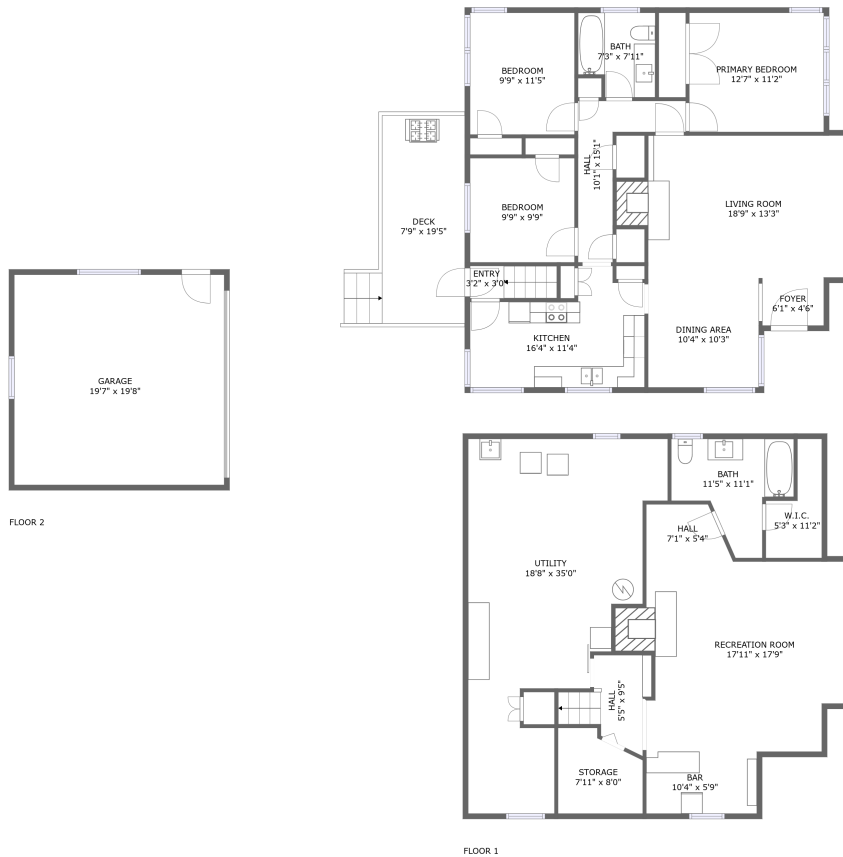



# 4420 Northeast 77th Avenue, Roseway, Portland, Multnomah County, Oregon, United States, 97218



## Property summary

 **1** Garages

 **3** Bedrooms

 **2** Bathrooms

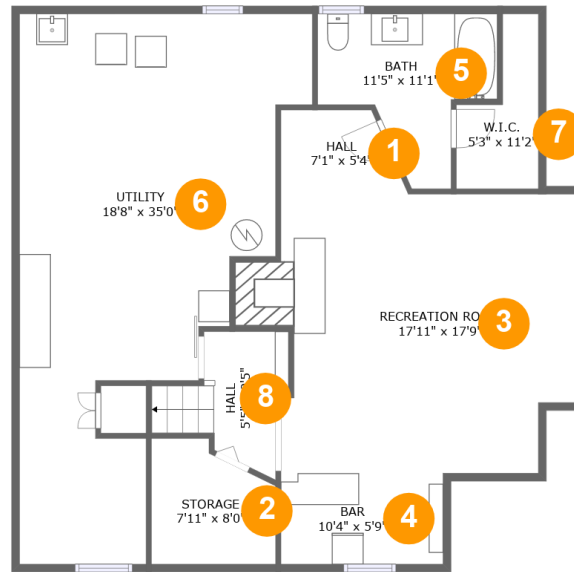
 **0** Half baths

 **2** Floors

 **1,898** Gross living area sqft

 **3,026** Total sqft

**4420 Northeast 77th Avenue, Roseway, Portland,  
Multnomah County, Oregon, United States, 97218**



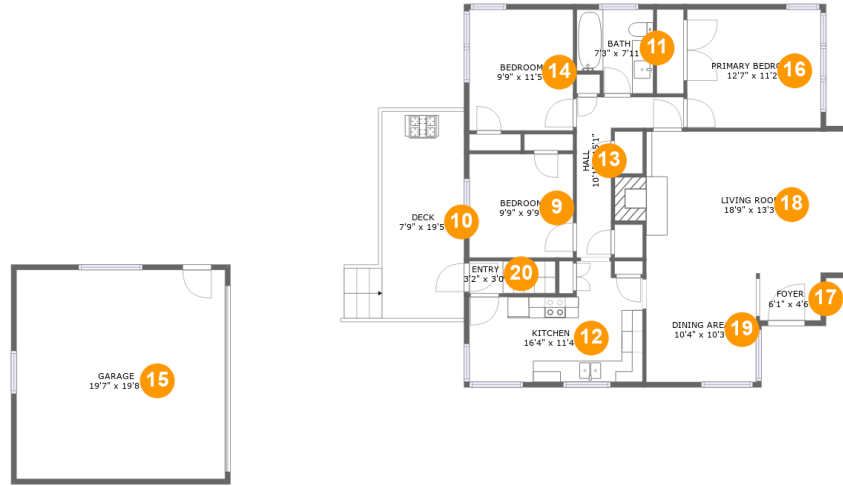
## Room dimensions

Floor 1

Total sqft: 1225 Living area: 673

#		Dimensions	sqft	Counted as living area
1	Hall	7'1" x 5'4"	37 sq. ft	Yes
2	Storage	7'11" x 8'0"	55 sq. ft	No
3	Recreation Room	17'11" x 17'9"	331 sq. ft	Yes
4	Bar	10'4" x 5'9"	60 sq. ft	Yes
5	Bath	11'5" x 11'1"	85 sq. ft	Yes
6	Utility	18'8" x 35'0"	447 sq. ft	No
7	W.I.C.	5'3" x 11'2"	41 sq. ft	Yes
8	Hall	5'5" x 9'5"	51 sq. ft	Yes

4420 Northeast 77th Avenue, Roseway, Portland, Multnomah County, Oregon, United States, 97218



Room dimensions

Floor 2

Total sqft: 1801

Living area: 1225

#		Dimensions	sqft	Counted as living area
9	Bedroom	9'9" x 9'9"	95 sq. ft	Yes
10	Deck	7'9" x 19'5"	150 sq. ft	No
11	Bath	7'3" x 7'11"	52 sq. ft	Yes
12	Kitchen	16'4" x 11'4"	147 sq. ft	Yes
13	Hall	10'1" x 15'1"	69 sq. ft	Yes
14	Bedroom	9'9" x 11'5"	111 sq. ft	Yes
15	Garage	19'7" x 19'8"	386 sq. ft	No
16	Primary Bedroom	12'7" x 11'2"	140 sq. ft	Yes
17	Foyer	6'1" x 4'6"	27 sq. ft	Yes
18	Living Room	18'9" x 13'3"	262 sq. ft	Yes
19	Dining Area	10'4" x 10'3"	106 sq. ft	Yes

**4420 Northeast 77th Avenue, Roseway, Portland,  
Multnomah County, Oregon, United States, 97218**

#		Dimensions	sqft	Counted as living area
20	Entry	3'2" x 3'0"	25 sq. ft	Yes

**4420 Northeast 77th Avenue, Roseway, Portland,  
Multnomah County, Oregon, United States, 97218**

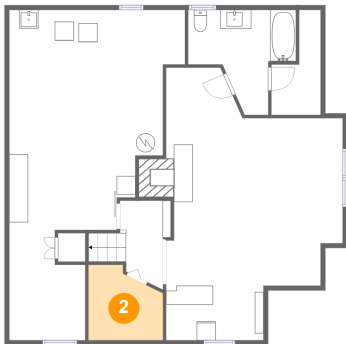
## 1 Floor 1 - Hall



**Dimensions:** 7'1" x 5'4"  
**Area:** 37 sq. ft  
**Counted as living area:** Yes

**Heated:** Yes  
**Finished:** Yes  
**Enclosed:** Yes  
**Contiguous:** Yes  
**Permitted:** Yes  
**Wet space:** No  
**Addition:** No  
**Conversion:** No

## 2 Floor 1 - Storage

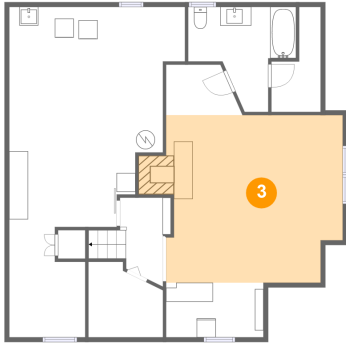


**Dimensions:** 7'11" x 8'0"  
**Area:** 55 sq. ft  
**Counted as living area:** No

**Heated:** No  
**Finished:** No  
**Enclosed:** No  
**Contiguous:** Yes  
**Permitted:** Yes  
**Wet space:** No  
**Addition:** No  
**Conversion:** No

4420 Northeast 77th Avenue, Roseway, Portland,  
Multnomah County, Oregon, United States, 97218

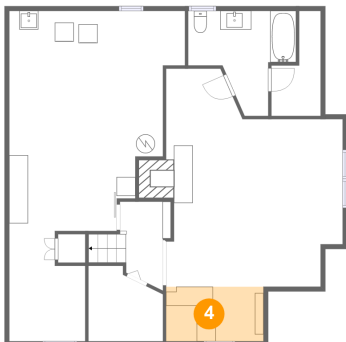
### 3 Floor 1 - Recreation Room



Dimensions: 17'11" x 17'9"  
Area: 331 sq. ft  
Counted as living area: Yes

Heated: Yes  
Finished: Yes  
Enclosed: Yes  
Contiguous: Yes  
Permitted: Yes  
Wet space: No  
Addition: No  
Conversion: No

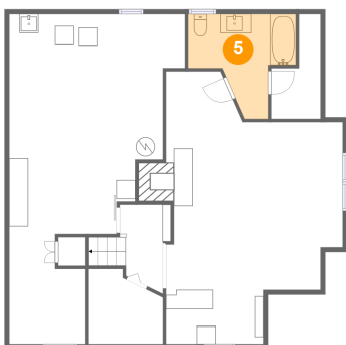
### 4 Floor 1 - Bar



Dimensions: 10'4" x 5'9"  
Area: 60 sq. ft  
Counted as living area: Yes

Heated: Yes  
Finished: Yes  
Enclosed: Yes  
Contiguous: Yes  
Permitted: Yes  
Wet space: No  
Addition: No  
Conversion: No

### 5 Floor 1 - Bath

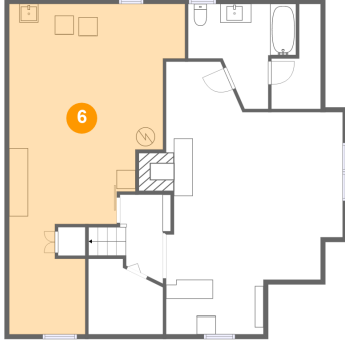


Dimensions: 11'5" x 11'1"  
Area: 85 sq. ft  
Counted as living area: Yes

Heated: Yes  
Finished: Yes  
Enclosed: Yes  
Contiguous: Yes  
Permitted: Yes  
Wet space: Yes  
Addition: No  
Conversion: No

4420 Northeast 77th Avenue, Roseway, Portland,  
Multnomah County, Oregon, United States, 97218

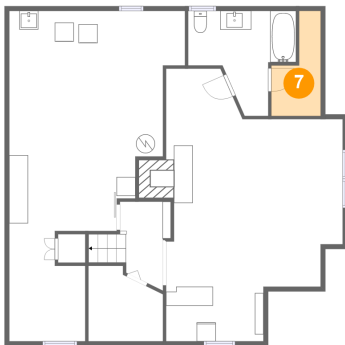
## 6 Floor 1 - Utility



Dimensions: 18'8" x 35'0"  
Area: 447 sq. ft  
Counted as living area: No

Heated: Yes  
Finished: No  
Enclosed: Yes  
Contiguous: Yes  
Permitted: Yes  
Wet space: No  
Addition: No  
Conversion: No

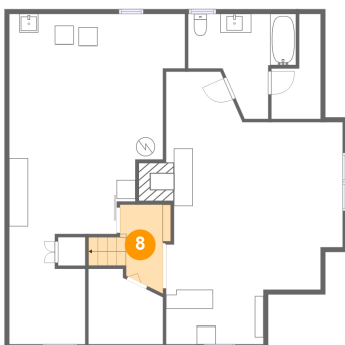
## 7 Floor 1 - W.I.C.



Dimensions: 5'3" x 11'2"  
Area: 41 sq. ft  
Counted as living area: Yes

Heated: Yes  
Finished: Yes  
Enclosed: Yes  
Contiguous: Yes  
Permitted: Yes  
Wet space: No  
Addition: No  
Conversion: No

## 8 Floor 1 - Hall



Dimensions: 5'5" x 9'5"  
Area: 51 sq. ft  
Counted as living area: Yes

Heated: Yes  
Finished: Yes  
Enclosed: Yes  
Contiguous: Yes  
Permitted: Yes  
Wet space: No  
Addition: No  
Conversion: No

4420 Northeast 77th Avenue, Roseway, Portland,  
Multnomah County, Oregon, United States, 97218

### 9 Floor 2 - Bedroom



Dimensions: 9'9" x 9'9"  
Area: 95 sq. ft  
Counted as living area: Yes

Heated: Yes  
Finished: Yes  
Enclosed: Yes  
Contiguous: Yes  
Permitted: Yes  
Wet space: No  
Addition: No  
Conversion: No

### 10 Floor 2 - Deck



Dimensions: 7'9" x 19'5"  
Area: 150 sq. ft  
Counted as living area: No

Heated: No  
Finished: Yes  
Enclosed: No  
Contiguous: Yes  
Permitted: Yes  
Wet space: No  
Addition: No  
Conversion: No

### 11 Floor 2 - Bath



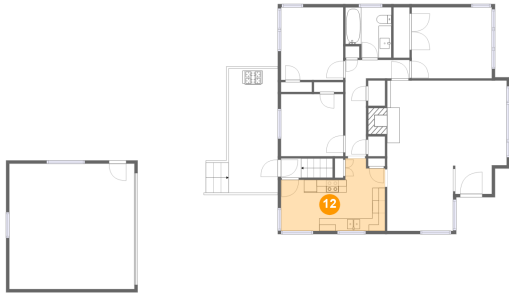
Dimensions: 7'3" x 7'11"  
Area: 52 sq. ft  
Counted as living area: Yes

Heated: Yes  
Finished: Yes  
Enclosed: Yes  
Contiguous: Yes  
Permitted: Yes  
Wet space: Yes  
Addition: No  
Conversion: No



4420 Northeast 77th Avenue, Roseway, Portland,  
Multnomah County, Oregon, United States, 97218

## 12 Floor 2 - Kitchen



Dimensions: 16'4" x 11'4"  
Area: 147 sq. ft  
Counted as living area: Yes

Heated: Yes  
Finished: Yes  
Enclosed: Yes  
Contiguous: Yes  
Permitted: Yes  
Wet space: No  
Addition: No  
Conversion: No

## 13 Floor 2 - Hall



Dimensions: 10'1" x 15'1"  
Area: 69 sq. ft  
Counted as living area: Yes

Heated: Yes  
Finished: Yes  
Enclosed: Yes  
Contiguous: Yes  
Permitted: Yes  
Wet space: No  
Addition: No  
Conversion: No

## 14 Floor 2 - Bedroom

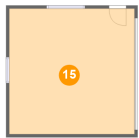


Dimensions: 9'9" x 11'5"  
Area: 111 sq. ft  
Counted as living area: Yes

Heated: Yes  
Finished: Yes  
Enclosed: Yes  
Contiguous: Yes  
Permitted: Yes  
Wet space: No  
Addition: No  
Conversion: No

4420 Northeast 77th Avenue, Roseway, Portland,  
Multnomah County, Oregon, United States, 97218

### 15 Floor 2 - Garage



Dimensions: 19'7" x 19'8"  
Area: 386 sq. ft  
Counted as living area: No

Heated: No  
Finished: No  
Enclosed: Yes  
Contiguous: Yes  
Permitted: Yes  
Wet space: No  
Addition: No  
Conversion: No

### 16 Floor 2 - Primary Bedroom



Dimensions: 12'7" x 11'2"  
Area: 140 sq. ft  
Counted as living area: Yes

Heated: Yes  
Finished: Yes  
Enclosed: Yes  
Contiguous: Yes  
Permitted: Yes  
Wet space: No  
Addition: No  
Conversion: No

### 17 Floor 2 - Foyer



Dimensions: 6'1" x 4'6"  
Area: 27 sq. ft  
Counted as living area: Yes

Heated: Yes  
Finished: Yes  
Enclosed: Yes  
Contiguous: Yes  
Permitted: Yes  
Wet space: No  
Addition: No  
Conversion: No

4420 Northeast 77th Avenue, Roseway, Portland,  
Multnomah County, Oregon, United States, 97218

### 18 Floor 2 - Living Room



Dimensions: 18'9" x 13'3"  
Area: 262 sq. ft  
Counted as living area: Yes

Heated: Yes  
Finished: Yes  
Enclosed: Yes  
Contiguous: Yes  
Permitted: Yes  
Wet space: No  
Addition: No  
Conversion: No

### 19 Floor 2 - Dining Area



Dimensions: 10'4" x 10'3"  
Area: 106 sq. ft  
Counted as living area: Yes

Heated: Yes  
Finished: Yes  
Enclosed: Yes  
Contiguous: Yes  
Permitted: Yes  
Wet space: No  
Addition: No  
Conversion: No

### 20 Floor 2 - Entry



Dimensions: 3'2" x 3'0"  
Area: 25 sq. ft  
Counted as living area: Yes

Heated: Yes  
Finished: Yes  
Enclosed: Yes  
Contiguous: Yes  
Permitted: Yes  
Wet space: No  
Addition: No  
Conversion: No