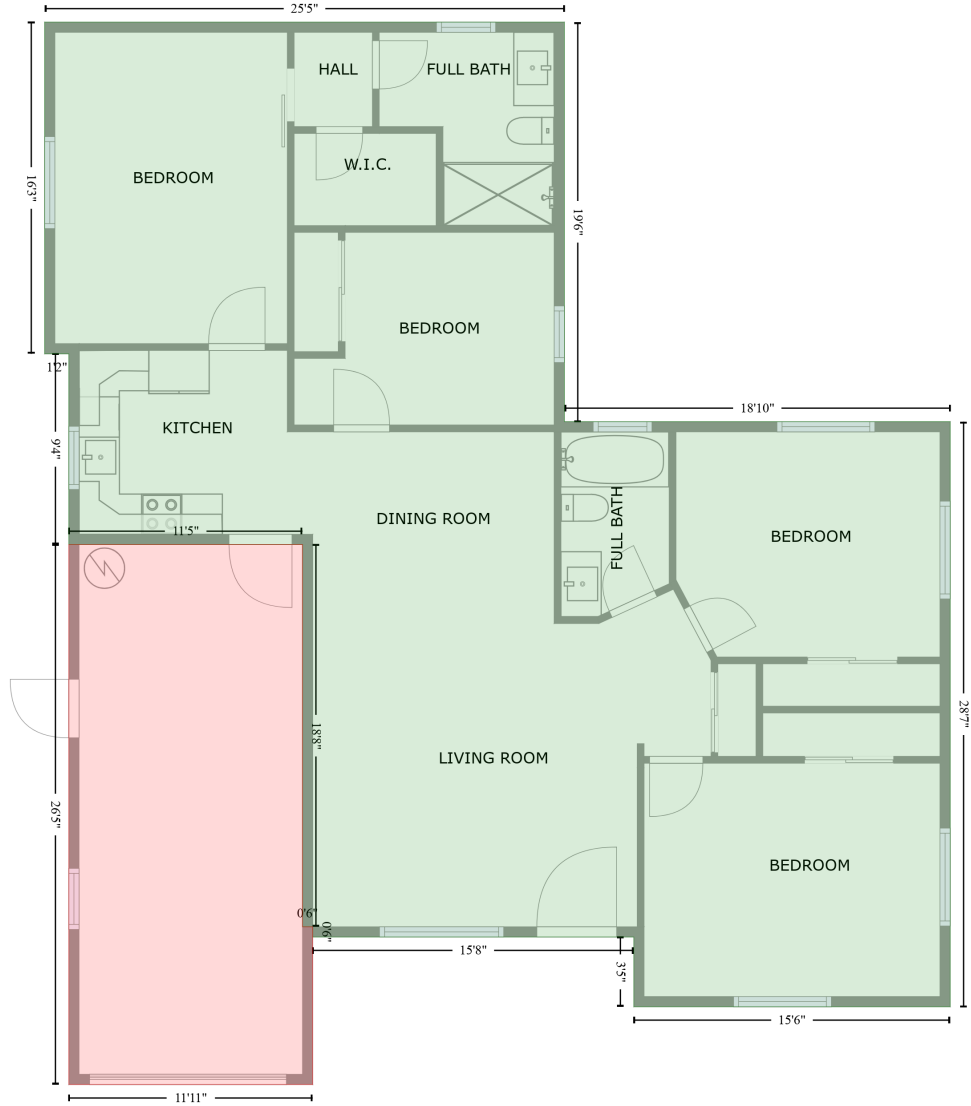


1961 Allard Drive, Lake Pines Estates, Clearwater, Pinellas County, Florida, United States, 33763

Gross Living Area: 1412 sq. ft

FLOOR 1
[AREA: 1412]



GARAGE (1)
[AREA: 306]

Space	Area (sq. ft)	Calculation <small>Coordinate Polygon Area Algorithm using inches</small>
FLOOR 1 (Living area)	1412	$-\left((301.7 + 301.7) * (-4.5 - 229.9) + (301.7 + 528) * (229.9 - 229.9) + (528 + 528) * (229.9 - 573.3) + (528 + 342.4) * (573.3 - 573.3) + (342.4 + 342.4) * (573.3 - 532.4) + (342.4 + 154) * (532.4 - 532.4) + (154 + 154) * (532.4 - 526.4) + (154 + 148) * (526.4 - 526.4) + (148 + 148) * (526.4 - 302.1) + (148 + 10.9) * (302.1 - 302.1) + (10.9 + 10.9) * (302.1 - 190.2) + (10.9 + -3.2) * (190.2 - 190.2) + (-3.2 + -3.2) * (190.2 - -4.5) + (-3.2 + 301.7) * (-4.5 - -4.5)\right) * 0.5 * 0.00694$
GARAGE	306	$-\left((148 + 148) * (302.1 - 526.4) + (148 + 154) * (526.4 - 526.4) + (154 + 154) * (526.4 - 619) + \right)$

1961 Allard Drive, Lake Pines Estates, Clearwater, Pinellas County, Florida, United States, 33763

Gross Living Area: 1412 sq. ft

Space	Area (sq. ft)	Calculation <small>Coordinate Polygon Area Algorithm using inches</small>
(Non-living area)		$(154 + 10.9) * (619 - 619) + (10.9 + 10.9) * (619 - 302.1) + (10.9 + 148) * (302.1 - 302.1) * 0.5 * 0.00694$