

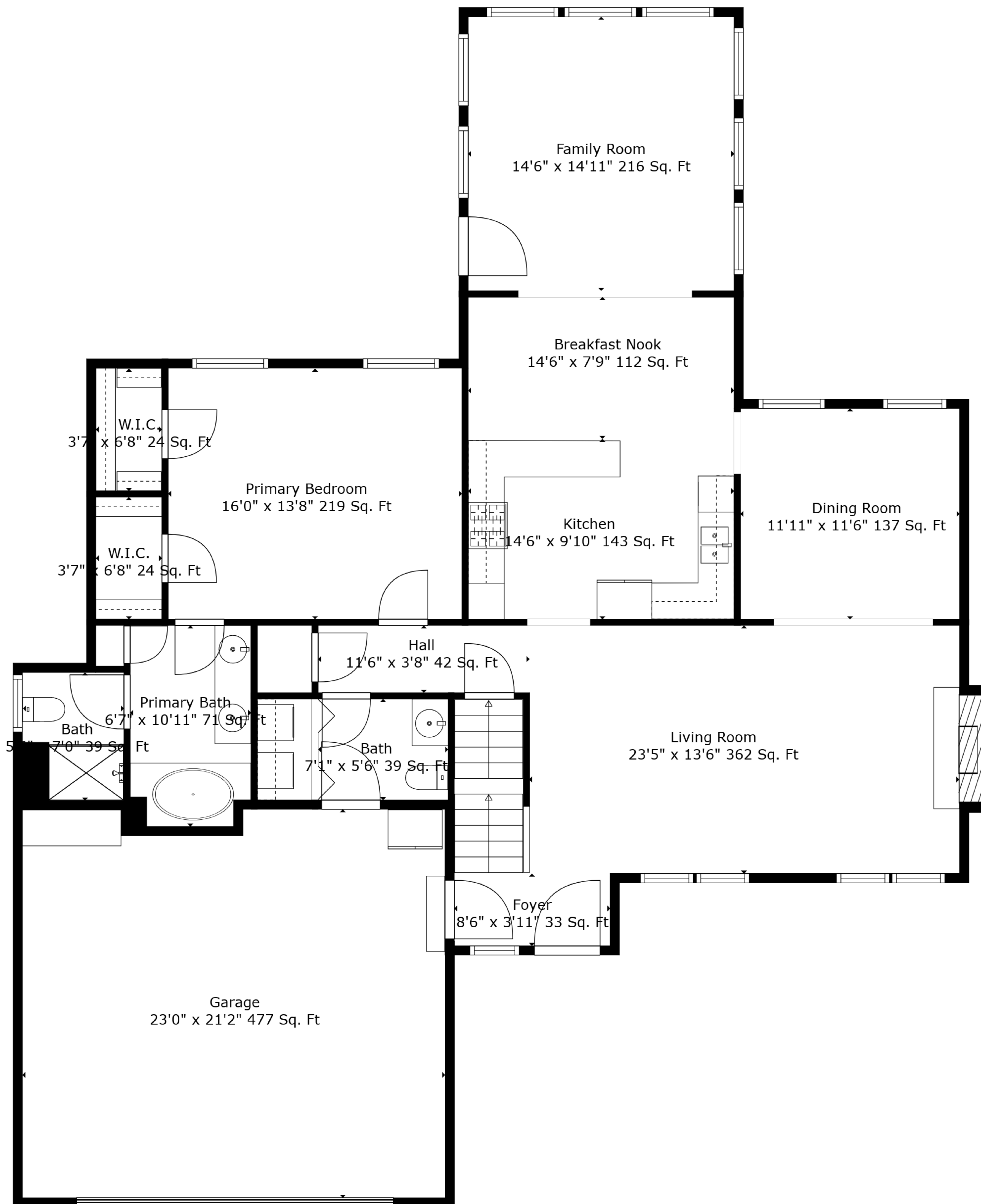
Basement  
38'9" x 50'1" 1209 Sq. Ft

Room  
11'11" x 24'9" 296 Sq. Ft

Storage  
27'6" x 7'5" 170 Sq. Ft

**TOTAL: 2825 sq. ft**  
BELOW GROUND: 180 sq. ft, FLOOR 2: 2017 sq. ft, FLOOR 3: 628 sq. ft  
EXCLUDED AREAS: BASEMENT: 1218 sq. ft, ROOM: 296 sq. ft, FIREPLACE: 10 sq. ft,  
OPEN TO BELOW: 350 sq. ft

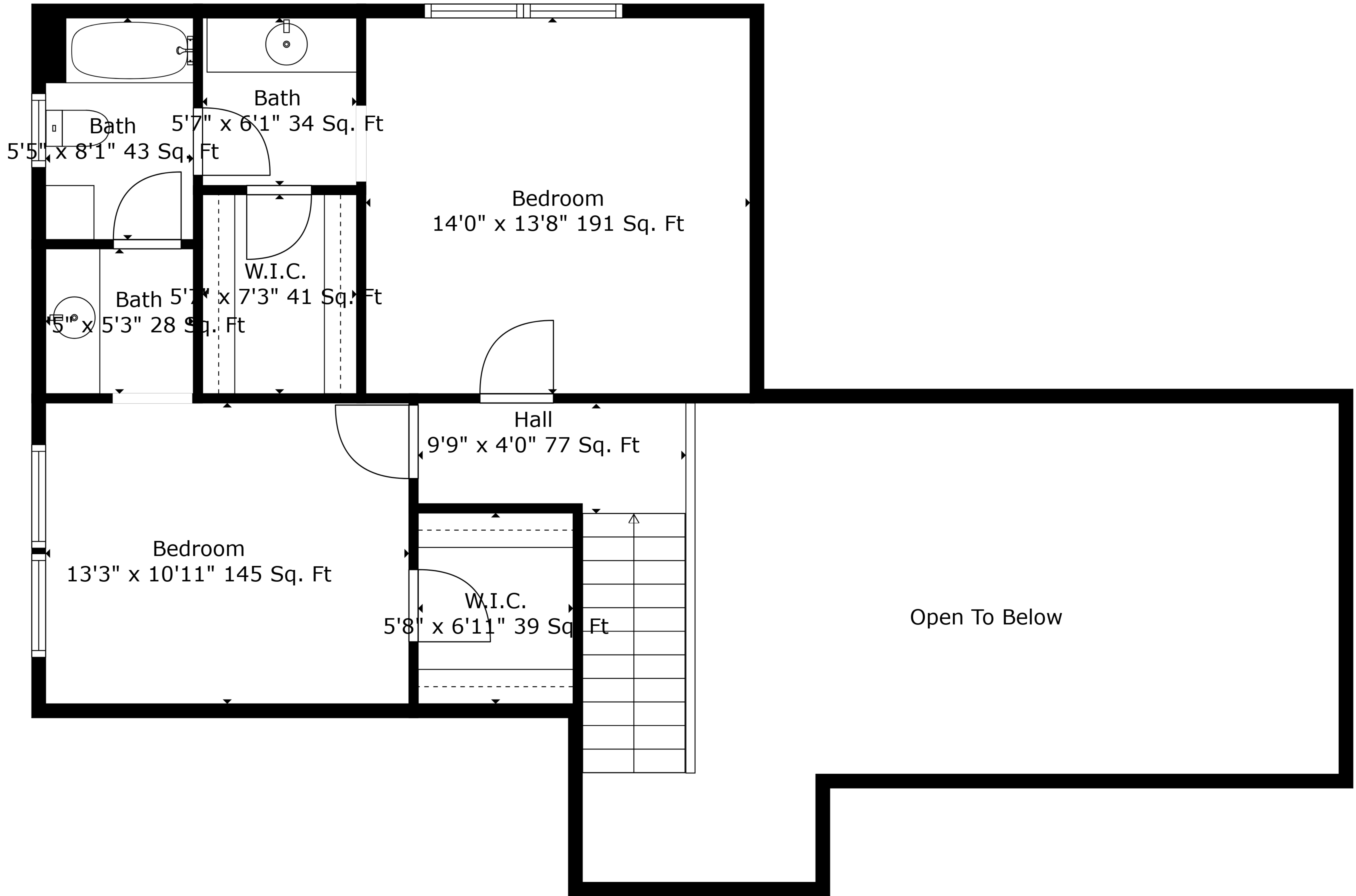
Measurements Are Deemed Highly Reliable But Not Guaranteed.



**TOTAL: 2825 sq. ft**

BELOW GROUND: 180 sq. ft, FLOOR 2: 2017 sq. ft, FLOOR 3: 628 sq. ft  
 EXCLUDED AREAS: BASEMENT: 1218 sq. ft, ROOM: 296 sq. ft, FIREPLACE: 10 sq. ft,  
 OPEN TO BELOW: 350 sq. ft

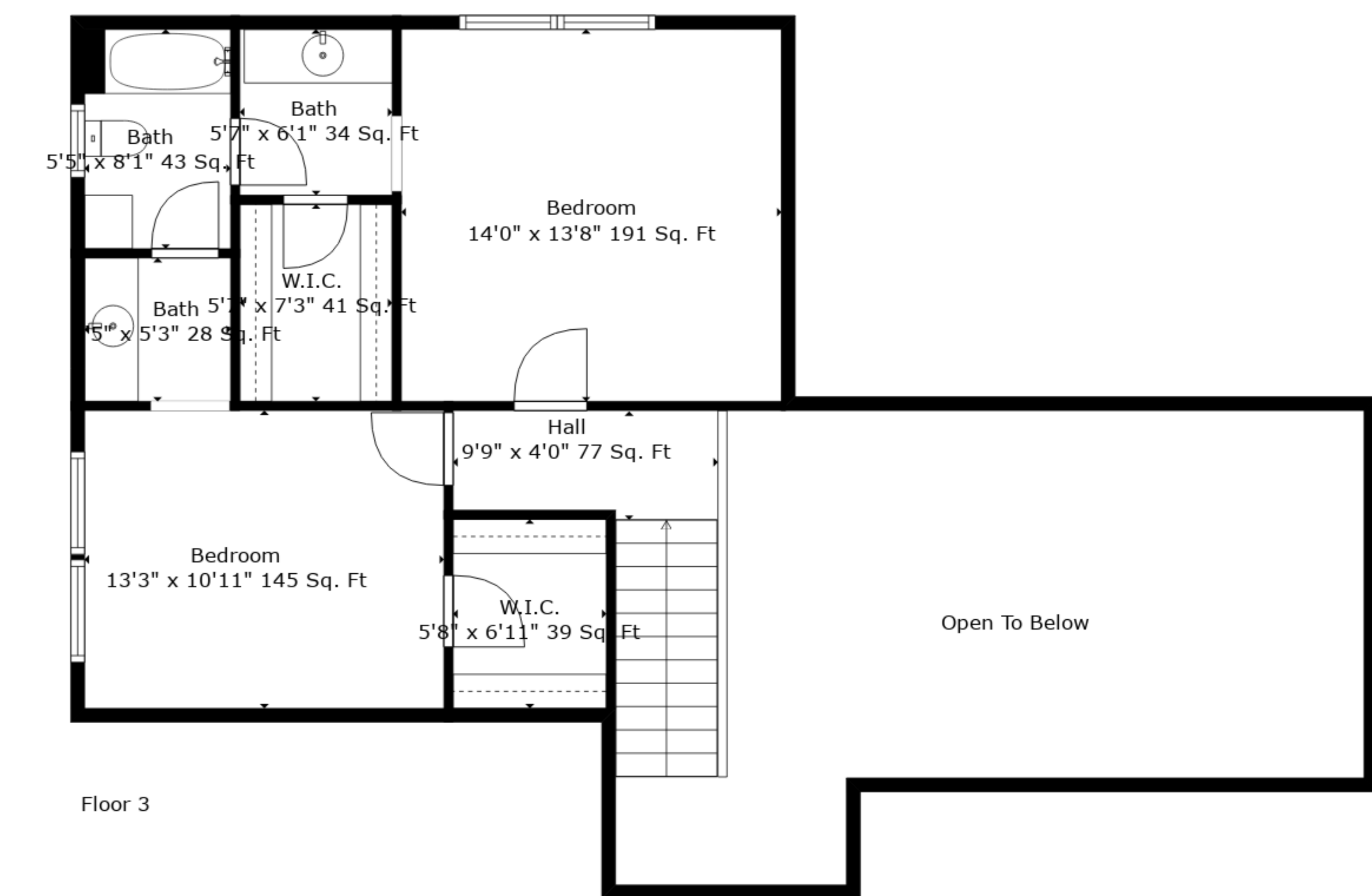
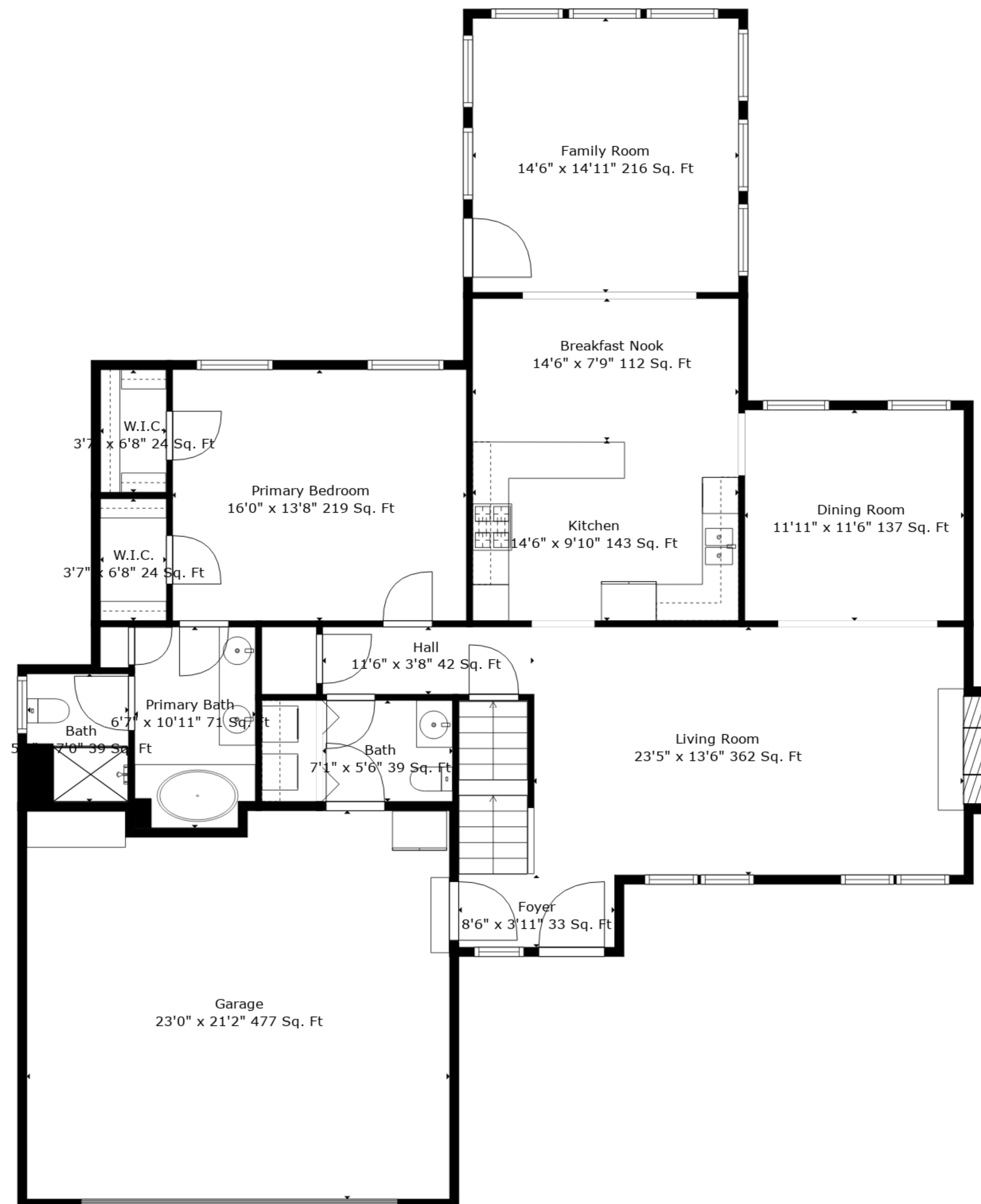
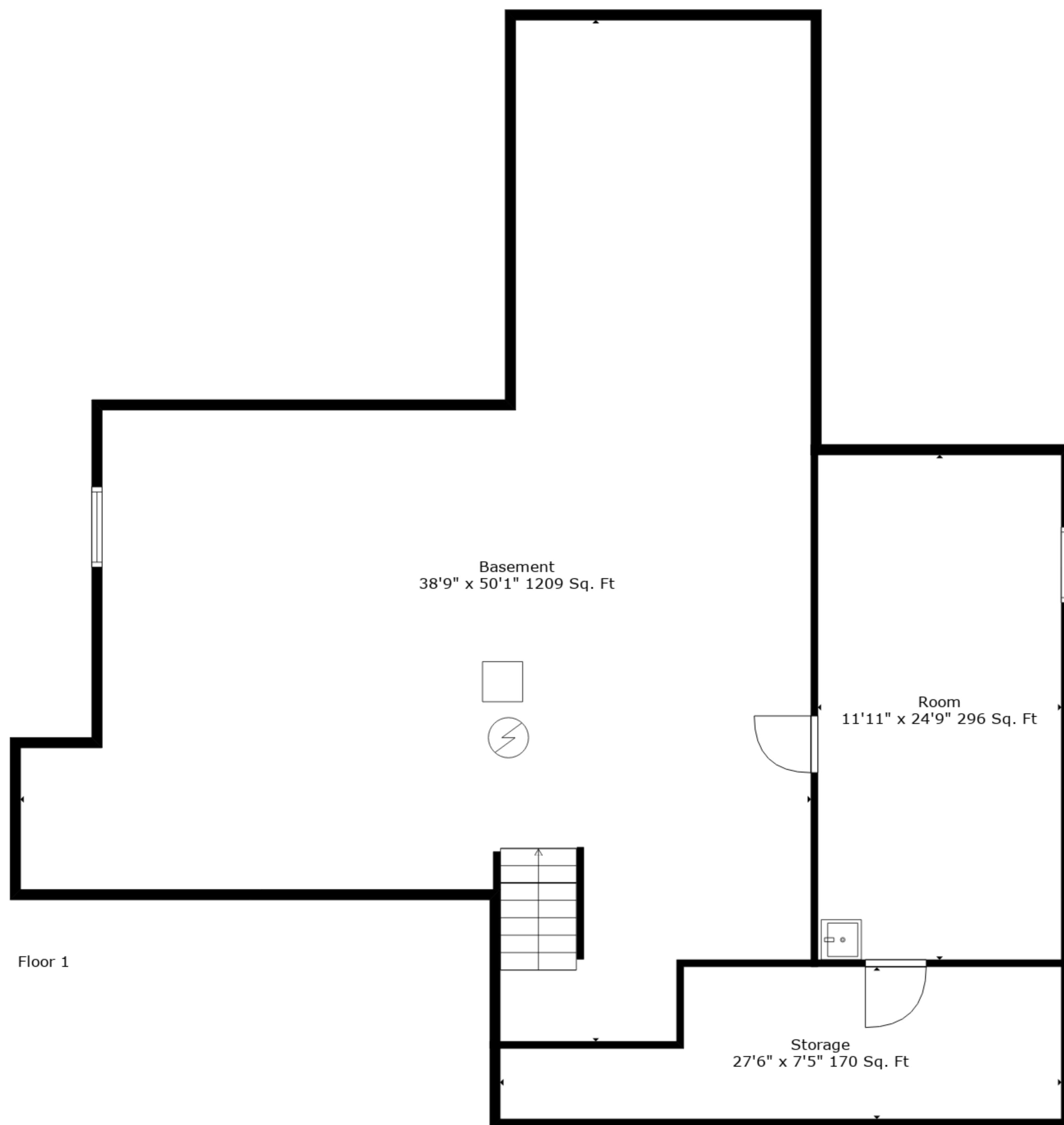
Measurements Are Deemed Highly Reliable But Not Guaranteed.



**TOTAL: 2825 sq. ft**

BELOW GROUND: 180 sq. ft, FLOOR 2: 2017 sq. ft, FLOOR 3: 628 sq. ft  
 EXCLUDED AREAS: BASEMENT: 1218 sq. ft, ROOM: 296 sq. ft, FIREPLACE: 10 sq. ft,  
 OPEN TO BELOW: 350 sq. ft

Measurements Are Deemed Highly Reliable But Not Guaranteed.



**TOTAL: 2825 sq. ft**  
 BELOW GROUND: 180 sq. ft, FLOOR 2: 2017 sq. ft, FLOOR 3: 628 sq. ft  
 EXCLUDED AREAS: BASEMENT: 1218 sq. ft, ROOM: 296 sq. ft, FIREPLACE: 10 sq. ft,  
 OPEN TO BELOW: 350 sq. ft

Measurements Are Deemed Highly Reliable But Not Guaranteed.