



Home report


1525 East Ellendale Avenue, Hillcrest, Logan, Cache County,
Utah, United States, 84321




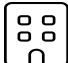
Property summary


 **1** Garages


 **4** Bedrooms

 **2** Bathrooms

 **0** Half baths

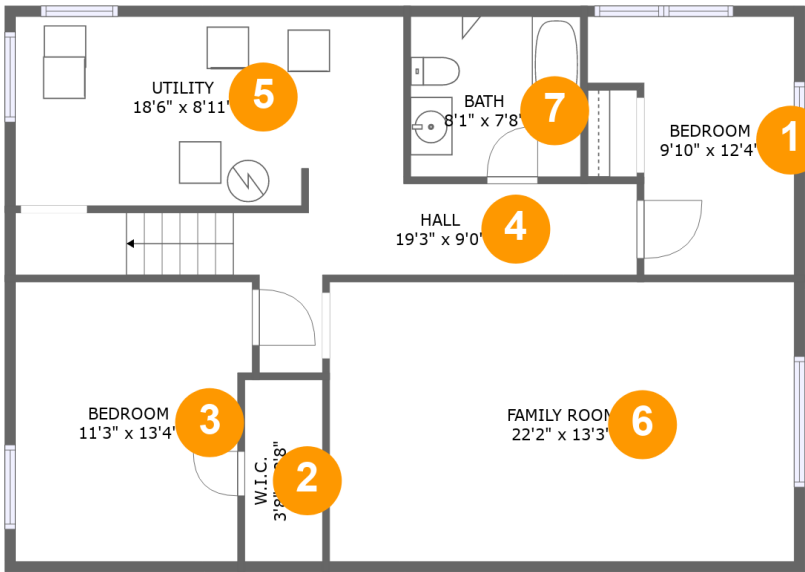
 **2** Floors

 **1,909** Gross living area sqft

 **2,345** Total sqft

Home report

1525 East Ellendale Avenue, Hillcrest, Logan, Cache County,
Utah, United States, 84321



Room dimensions

Floor 1 Total sqft: 1026 Living area: 851

#		Dimensions	sqft	Counted as living area
1	Bedroom	9'10" x 12'4"	96 sq. ft	Yes
2	W.I.C.	3'8" x 8'8"	32 sq. ft	Yes
3	Bedroom	11'3" x 13'4"	144 sq. ft	Yes
4	Hall	19'3" x 9'0"	123 sq. ft	Yes
5	Utility	18'6" x 8'11"	161 sq. ft	No
6	Family Room	22'2" x 13'3"	294 sq. ft	Yes
7	Bath	8'1" x 7'8"	61 sq. ft	Yes

Home report

1525 East Ellendale Avenue, Hillcrest, Logan, Cache County,
Utah, United States, 84321



Room dimensions

Floor 2 Total sqft: 1319 Living area: 1058

#		Dimensions	sqft	Counted as living area
8	Hall	8'8" x 5'5"	29 sq. ft	Yes
9	Garage	11'6" x 20'4"	234 sq. ft	No
10	Living Room	18'2" x 13'4"	241 sq. ft	Yes
11	Bedroom	10'7" x 13'1"	139 sq. ft	Yes
12	Dining Area	12'3" x 13'6"	174 sq. ft	Yes
13	Kitchen	11'6" x 9'10"	108 sq. ft	Yes
14	Hall	3'5" x 2'11"	28 sq. ft	Yes
15	Bath	5'3" x 10'8"	56 sq. ft	Yes
16	Bedroom	13'0" x 10'8"	139 sq. ft	Yes

1525 East Ellendale Avenue, Hillcrest, Logan, Cache County,
Utah, United States, 84321

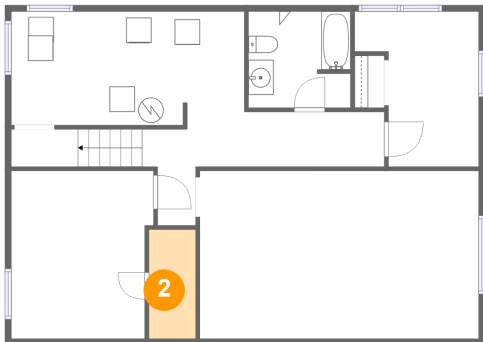
1 Floor 1 - Bedroom



Dimensions: 9'10" x 12'4"
Area: 96 sq. ft
Counted as living area: Yes

Heated: Yes
Finished: Yes
Enclosed: Yes
Contiguous: Yes
Permitted: Yes
Wet space: No
Addition: No
Conversion: No

2 Floor 1 - W.I.C.



Dimensions: 3'8" x 8'8"
Area: 32 sq. ft
Counted as living area: Yes

Heated: Yes
Finished: Yes
Enclosed: Yes
Contiguous: Yes
Permitted: Yes
Wet space: No
Addition: No
Conversion: No

Home report

1525 East Ellendale Avenue, Hillcrest, Logan, Cache County,
Utah, United States, 84321

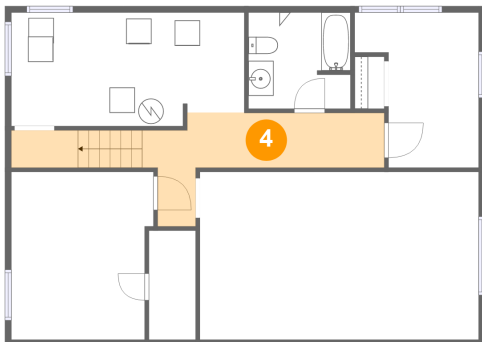
3 Floor 1 - Bedroom



Dimensions: 11'3" x 13'4"
Area: 144 sq. ft
Counted as living area: Yes

Heated: Yes
Finished: Yes
Enclosed: Yes
Contiguous: Yes
Permitted: Yes
Wet space: No
Addition: No
Conversion: No

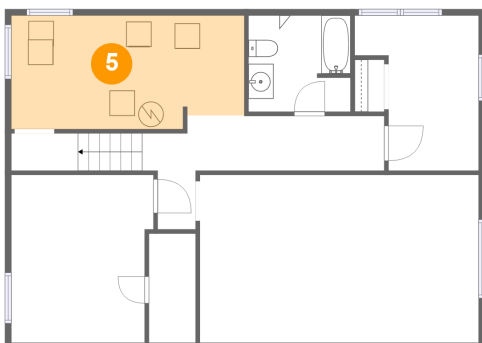
4 Floor 1 - Hall



Dimensions: 19'3" x 9'0"
Area: 123 sq. ft
Counted as living area: Yes

Heated: Yes
Finished: Yes
Enclosed: Yes
Contiguous: Yes
Permitted: Yes
Wet space: No
Addition: No
Conversion: No

5 Floor 1 - Utility



Dimensions: 18'6" x 8'11"
Area: 161 sq. ft
Counted as living area: No

Heated: Yes
Finished: No
Enclosed: Yes
Contiguous: Yes
Permitted: Yes
Wet space: No
Addition: No
Conversion: No

Home report

1525 East Ellendale Avenue, Hillcrest, Logan, Cache County,
Utah, United States, 84321

6 Floor 1 - Family Room



Dimensions: 22'2" x 13'3"
Area: 294 sq. ft
Counted as living area: Yes

Heated: Yes
Finished: Yes
Enclosed: Yes
Contiguous: Yes
Permitted: Yes
Wet space: No
Addition: No
Conversion: No

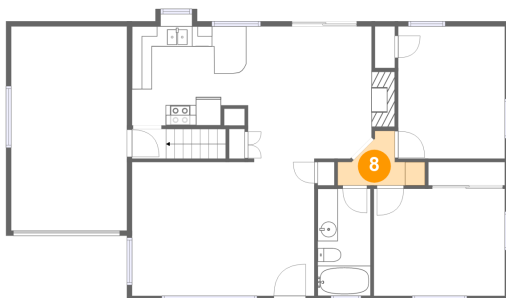
7 Floor 1 - Bath



Dimensions: 8'1" x 7'8"
Area: 61 sq. ft
Counted as living area: Yes

Heated: Yes
Finished: Yes
Enclosed: Yes
Contiguous: Yes
Permitted: Yes
Wet space: Yes
Addition: No
Conversion: No

8 Floor 2 - Hall



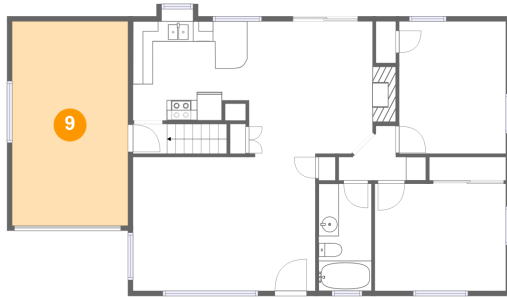
Dimensions: 8'8" x 5'5"
Area: 29 sq. ft
Counted as living area: Yes

Heated: Yes
Finished: Yes
Enclosed: Yes
Contiguous: Yes
Permitted: Yes
Wet space: No
Addition: No
Conversion: No

Home report

1525 East Ellendale Avenue, Hillcrest, Logan, Cache County,
Utah, United States, 84321

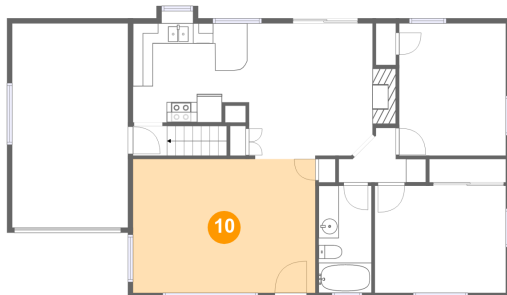
9 Floor 2 - Garage



Dimensions: 11'6" x 20'4"
Area: 234 sq. ft
Counted as living area: No

Heated: No
Finished: No
Enclosed: Yes
Contiguous: Yes
Permitted: Yes
Wet space: No
Addition: No
Conversion: No

10 Floor 2 - Living Room



Dimensions: 18'2" x 13'4"
Area: 241 sq. ft
Counted as living area: Yes

Heated: Yes
Finished: Yes
Enclosed: Yes
Contiguous: Yes
Permitted: Yes
Wet space: No
Addition: No
Conversion: No

11 Floor 2 - Bedroom



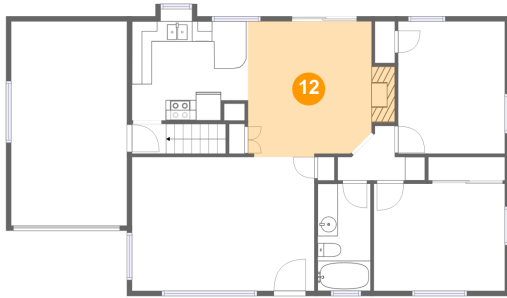
Dimensions: 10'7" x 13'1"
Area: 139 sq. ft
Counted as living area: Yes

Heated: Yes
Finished: Yes
Enclosed: Yes
Contiguous: Yes
Permitted: Yes
Wet space: No
Addition: No
Conversion: No

Home report

1525 East Ellendale Avenue, Hillcrest, Logan, Cache County,
Utah, United States, 84321

12 Floor 2 - Dining Area



Dimensions: 12'3" x 13'6"
Area: 174 sq. ft
Counted as living area: Yes

Heated: Yes
Finished: Yes
Enclosed: Yes
Contiguous: Yes
Permitted: Yes
Wet space: No
Addition: No
Conversion: No

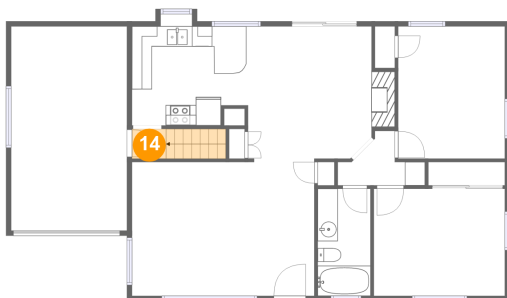
13 Floor 2 - Kitchen



Dimensions: 11'6" x 9'10"
Area: 108 sq. ft
Counted as living area: Yes

Heated: Yes
Finished: Yes
Enclosed: Yes
Contiguous: Yes
Permitted: Yes
Wet space: No
Addition: No
Conversion: No

14 Floor 2 - Hall



Dimensions: 3'5" x 2'11"
Area: 28 sq. ft
Counted as living area: Yes

Heated: Yes
Finished: Yes
Enclosed: Yes
Contiguous: Yes
Permitted: Yes
Wet space: No
Addition: No
Conversion: No

1525 East Ellendale Avenue, Hillcrest, Logan, Cache County,
Utah, United States, 84321

15 Floor 2 - Bath



Dimensions: 5'3" x 10'8"
Area: 56 sq. ft
Counted as living area: Yes

Heated: Yes
Finished: Yes
Enclosed: Yes
Contiguous: Yes
Permitted: Yes
Wet space: Yes
Addition: No
Conversion: No

16 Floor 2 - Bedroom



Dimensions: 13'0" x 10'8"
Area: 139 sq. ft
Counted as living area: Yes

Heated: Yes
Finished: Yes
Enclosed: Yes
Contiguous: Yes
Permitted: Yes
Wet space: No
Addition: No
Conversion: No