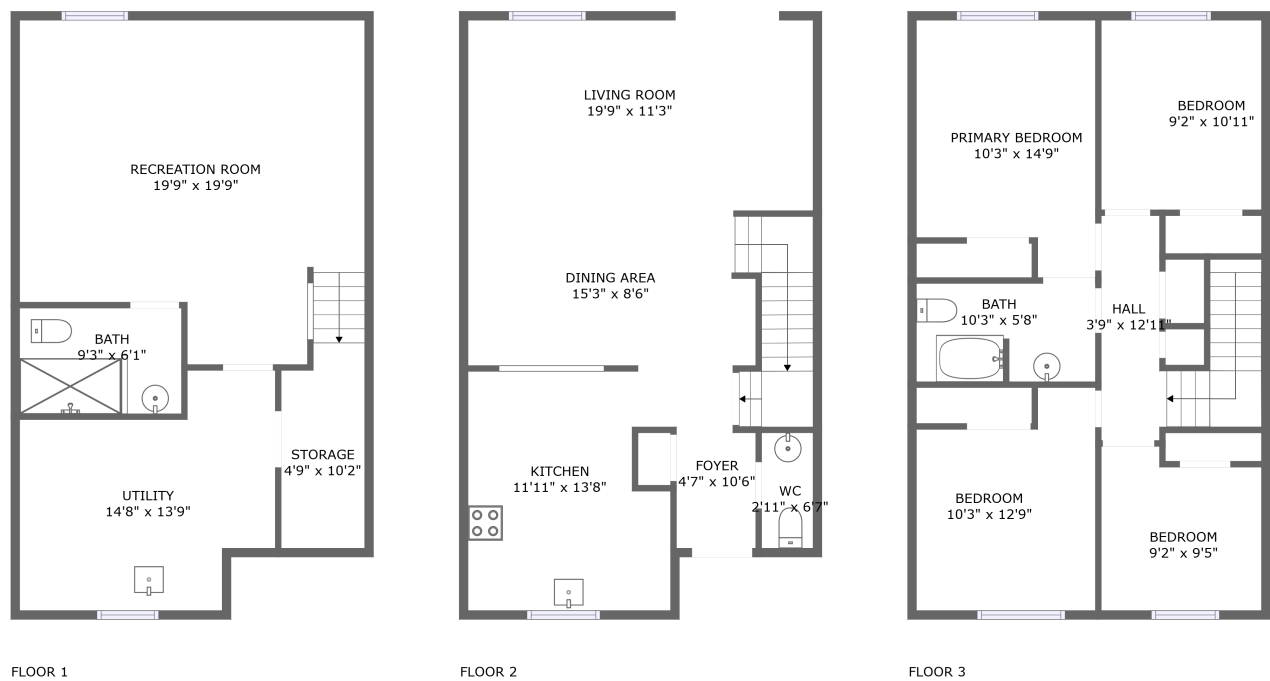



Home report


1450 Sixth Line, College Park, Oakville, Halton County, Ontario,
Canada, L6H 1X6, 19




Property summary




0
Garages




4
Bedrooms




2
Bathrooms




1
Half baths



3
Floors



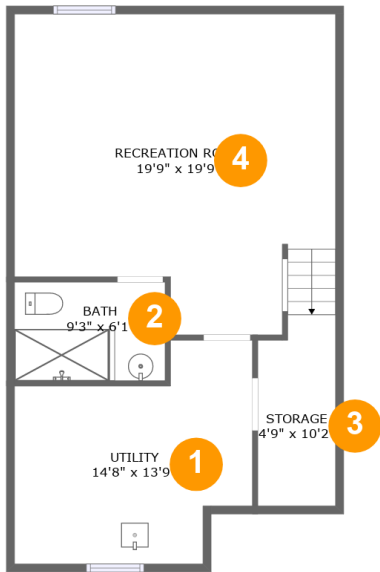
2,011
Gross living
area sqft



2,065
Total sqft

Home report

1450 Sixth Line, College Park, Oakville, Halton County, Ontario,
Canada, L6H 1X6, 19



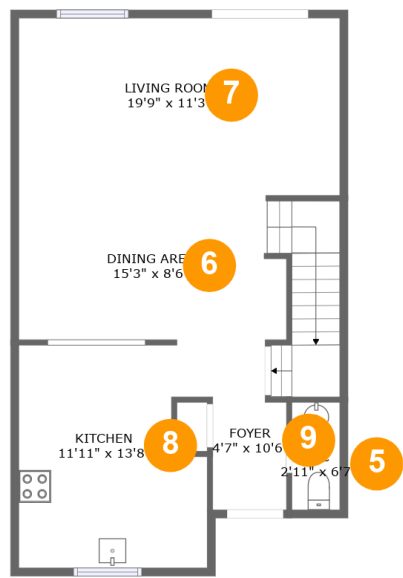
Room dimensions

Floor 1 Total sqft: 679 Living area: 625

#		Dimensions	sqft	Counted as living area
1	Utility	14'8" x 13'9"	164 sq. ft	Yes
2	Bath	9'3" x 6'1"	56 sq. ft	Yes
3	Storage	4'9" x 10'2"	49 sq. ft	No
4	Recreation Room	19'9" x 19'9"	357 sq. ft	Yes

Home report

1450 Sixth Line, College Park, Oakville, Halton County, Ontario,
Canada, L6H 1X6, 19



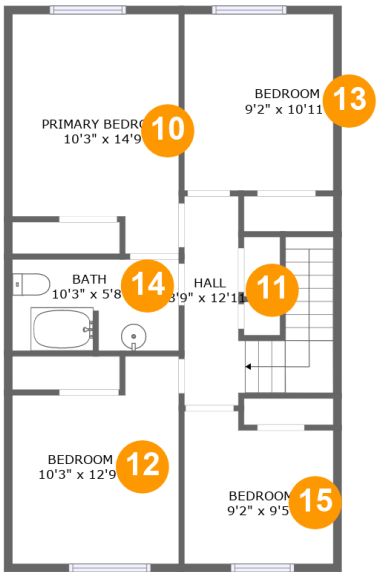
Room dimensions

Floor 2 Total sqft: 679 Living area: 679

#		Dimensions	sqft	Counted as living area
5	WC	2'11" x 6'7"	20 sq. ft	Yes
6	Dining Area	15'3" x 8'6"	183 sq. ft	Yes
7	Living Room	19'9" x 11'3"	221 sq. ft	Yes
8	Kitchen	11'11" x 13'8"	153 sq. ft	Yes
9	Foyer	4'7" x 10'6"	43 sq. ft	Yes

Home report

1450 Sixth Line, College Park, Oakville, Halton County, Ontario,
Canada, L6H 1X6, 19

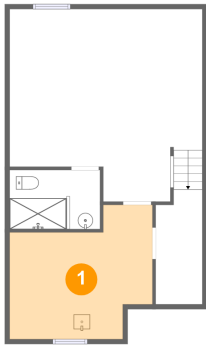


Room dimensions

Floor 3 Total sqft: 707 Living area: 707

#		Dimensions	sqft	Counted as living area
10	Primary Bedroom	10'3" x 14'9"	136 sq. ft	Yes
11	Hall	3'9" x 12'11"	81 sq. ft	Yes
12	Bedroom	10'3" x 12'9"	115 sq. ft	Yes
13	Bedroom	9'2" x 10'11"	100 sq. ft	Yes
14	Bath	10'3" x 5'8"	57 sq. ft	Yes
15	Bedroom	9'2" x 9'5"	80 sq. ft	Yes

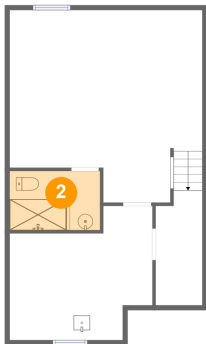
1 Floor 1 - Utility



Dimensions: 14'8" x 13'9"
Area: 164 sq. ft
Counted as living area: Yes

Heated: Yes
Finished: Yes
Enclosed: Yes
Contiguous: Yes
Permitted: Yes
Wet space: No
Addition: No
Conversion: No

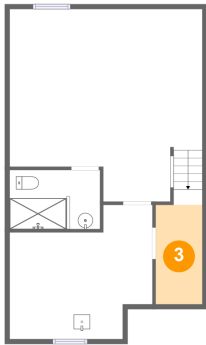
2 Floor 1 - Bath



Dimensions: 9'3" x 6'1"
Area: 56 sq. ft
Counted as living area: Yes

Heated: Yes
Finished: Yes
Enclosed: Yes
Contiguous: Yes
Permitted: Yes
Wet space: Yes
Addition: No
Conversion: No

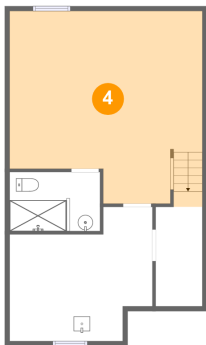
3 Floor 1 - Storage



Dimensions: 4'9" x 10'2"
Area: 49 sq. ft
Counted as living area: No

Heated: No
Finished: No
Enclosed: No
Contiguous: Yes
Permitted: Yes
Wet space: No
Addition: No
Conversion: No

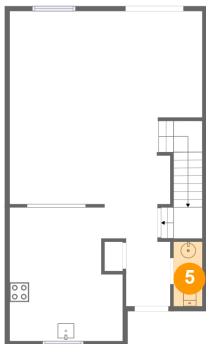
4 Floor 1 - Recreation Room



Dimensions: 19'9" x 19'9"
Area: 357 sq. ft
Counted as living area: Yes

Heated: Yes
Finished: Yes
Enclosed: Yes
Contiguous: Yes
Permitted: Yes
Wet space: No
Addition: No
Conversion: No

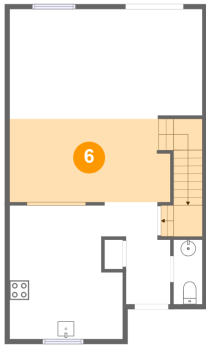
5 Floor 2 - WC



Dimensions: 2'11" x 6'7"
Area: 20 sq. ft
Counted as living area: Yes

Heated: Yes
Finished: Yes
Enclosed: Yes
Contiguous: Yes
Permitted: Yes
Wet space: Yes
Addition: No
Conversion: No

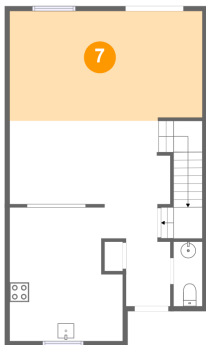
6 Floor 2 - Dining Area



Dimensions: 15'3" x 8'6"
Area: 183 sq. ft
Counted as living area: Yes

Heated: Yes
Finished: Yes
Enclosed: Yes
Contiguous: Yes
Permitted: Yes
Wet space: No
Addition: No
Conversion: No

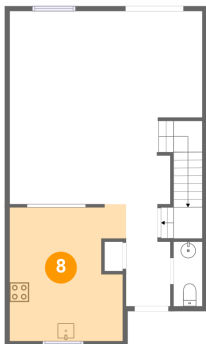
7 Floor 2 - Living Room



Dimensions: 19'9" x 11'3"
Area: 221 sq. ft
Counted as living area: Yes

Heated: Yes
Finished: Yes
Enclosed: Yes
Contiguous: Yes
Permitted: Yes
Wet space: No
Addition: No
Conversion: No

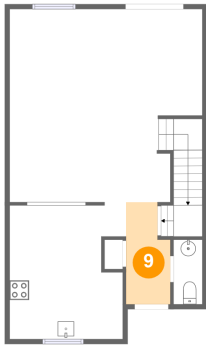
8 Floor 2 - Kitchen



Dimensions: 11'11" x 13'8"
Area: 153 sq. ft
Counted as living area: Yes

Heated: Yes
Finished: Yes
Enclosed: Yes
Contiguous: Yes
Permitted: Yes
Wet space: No
Addition: No
Conversion: No

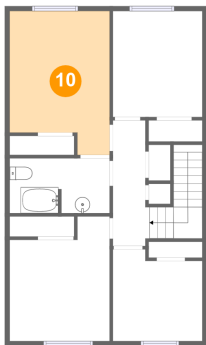
9 Floor 2 - Foyer



Dimensions: 4'7" x 10'6"
Area: 43 sq. ft
Counted as living area: Yes

Heated: Yes
Finished: Yes
Enclosed: Yes
Contiguous: Yes
Permitted: Yes
Wet space: No
Addition: No
Conversion: No

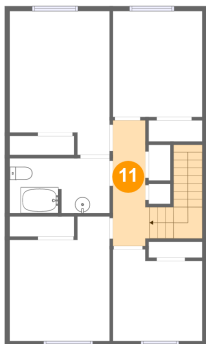
10 Floor 3 - Primary Bedroom



Dimensions: 10'3" x 14'9"
Area: 136 sq. ft
Counted as living area: Yes

Heated: Yes
Finished: Yes
Enclosed: Yes
Contiguous: Yes
Permitted: Yes
Wet space: No
Addition: No
Conversion: No

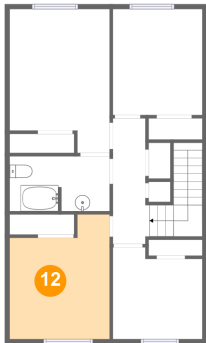
11 Floor 3 - Hall



Dimensions: 3'9" x 12'11"
Area: 81 sq. ft
Counted as living area: Yes

Heated: Yes
Finished: Yes
Enclosed: Yes
Contiguous: Yes
Permitted: Yes
Wet space: No
Addition: No
Conversion: No

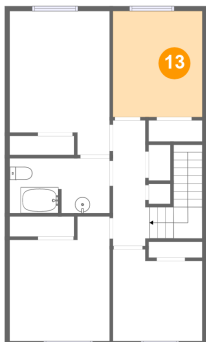
12 Floor 3 - Bedroom



Dimensions: 10'3" x 12'9"
Area: 115 sq. ft
Counted as living area: Yes

Heated: Yes
Finished: Yes
Enclosed: Yes
Contiguous: Yes
Permitted: Yes
Wet space: No
Addition: No
Conversion: No

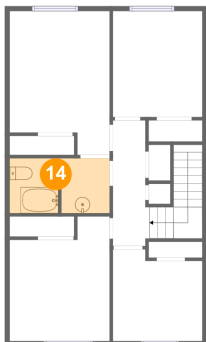
13 Floor 3 - Bedroom



Dimensions: 9'2" x 10'11"
Area: 100 sq. ft
Counted as living area: Yes

Heated: Yes
Finished: Yes
Enclosed: Yes
Contiguous: Yes
Permitted: Yes
Wet space: No
Addition: No
Conversion: No

14 Floor 3 - Bath

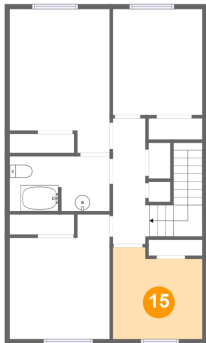


Dimensions: 10'3" x 5'8"
Area: 57 sq. ft
Counted as living area: Yes

Heated: Yes
Finished: Yes
Enclosed: Yes
Contiguous: Yes
Permitted: Yes
Wet space: Yes
Addition: No
Conversion: No

1450 Sixth Line, College Park, Oakville, Halton County, Ontario,
Canada, L6H 1X6, 19

15 Floor 3 - Bedroom



Dimensions: 9'2" x 9'5"
Area: 80 sq. ft
Counted as living area: Yes

Heated: Yes
Finished: Yes
Enclosed: Yes
Contiguous: Yes
Permitted: Yes
Wet space: No
Addition: No
Conversion: No