



Home report


1010 Hidden Pine Road, Mountain Home, Elmore County, Idaho,  
United States, 83647




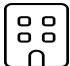
Property summary


 **2** Garages


 **2** Bedrooms

 **2** Bathrooms

 **1** Half baths

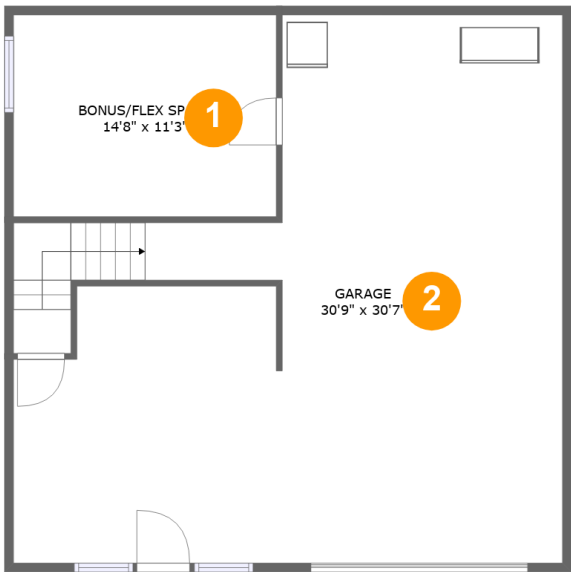
 **3** Floors

 **1,565** Gross living area sqft

 **3,721** Total sqft

Home report

1010 Hidden Pine Road, Mountain Home, Elmore County, Idaho,  
United States, 83647



Room dimensions

Floor 1 Total sqft: 1003    Living area: 0

#		Dimensions	sqft	Counted as living area
1	BONUS/FLEX Space	14'8" x 11'3"	166 sq. ft	No
2	Garage	30'9" x 30'7"	758 sq. ft	No

Home report

1010 Hidden Pine Road, Mountain Home, Elmore County, Idaho,  
United States, 83647



Room dimensions

Floor 2

Total sqft: 1919    Living area: 1003

#		Dimensions	sqft	Counted as living area
3	WC	7'1" x 3'2"	22 sq. ft	Yes
4	Dining Area	13'9" x 7'4"	101 sq. ft	Yes
5	Laundry	13'2" x 7'3"	70 sq. ft	Yes
6	Porch	31'0" x 7'7"	233 sq. ft	No
7	Kitchen	13'9" x 7'11"	109 sq. ft	Yes
8	W.I.C.	5'1" x 4'11"	24 sq. ft	Yes
9	Bath	8'4" x 4'11"	41 sq. ft	Yes
10	Entry	3'8" x 15'2"	69 sq. ft	Yes
11	Primary Bedroom	13'5" x 9'9"	131 sq. ft	Yes
12	Patio	41'5" x 18'7"	683 sq. ft	No
13	Living Room	16'11" x 15'6"	293 sq. ft	Yes

Home report

1010 Hidden Pine Road, Mountain Home, Elmore County, Idaho,  
United States, 83647

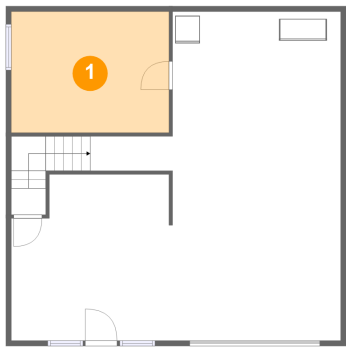


Room dimensions

Floor 3 Total sqft: 799    Living area: 562

#		Dimensions	sqft	Counted as living area
14	Family Room	15'10" x 20'4"	285 sq. ft	Yes
15	Balcony	30'9" x 7'9"	237 sq. ft	No
16	Bath	9'0" x 5'2"	46 sq. ft	Yes
17	Bedroom	15'10" x 10'0"	148 sq. ft	Yes

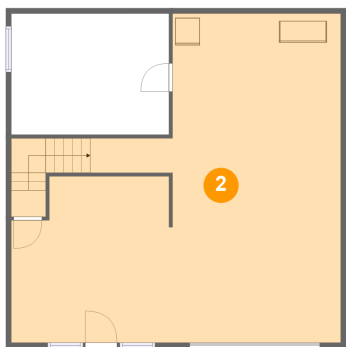
1 Floor 1 - BONUS/FLEX Space



Dimensions: 14'8" x 11'3"  
Area: 166 sq. ft  
Counted as living area: No

Heated: Yes  
Finished: Yes  
Enclosed: Yes  
Contiguous: No  
Permitted: Yes  
Wet space: No  
Addition: No  
Conversion: No

2 Floor 1 - Garage



Dimensions: 30'9" x 30'7"  
Area: 758 sq. ft  
Counted as living area: No

Heated: No  
Finished: No  
Enclosed: Yes  
Contiguous: Yes  
Permitted: Yes  
Wet space: No  
Addition: No  
Conversion: No

3 Floor 2 - WC



Dimensions: 7'1" x 3'2"  
Area: 22 sq. ft  
Counted as living area: Yes

Heated: Yes  
Finished: Yes  
Enclosed: Yes  
Contiguous: Yes  
Permitted: Yes  
Wet space: Yes  
Addition: No  
Conversion: No

4 Floor 2 - Dining Area



Dimensions: 13'9" x 7'4"  
Area: 101 sq. ft  
Counted as living area: Yes

Heated: Yes  
Finished: Yes  
Enclosed: Yes  
Contiguous: Yes  
Permitted: Yes  
Wet space: No  
Addition: No  
Conversion: No

5 Floor 2 - Laundry



Dimensions: 13'2" x 7'3"  
Area: 70 sq. ft  
Counted as living area: Yes

Heated: Yes  
Finished: Yes  
Enclosed: Yes  
Contiguous: Yes  
Permitted: Yes  
Wet space: No  
Addition: No  
Conversion: No

6 Floor 2 - Porch



Dimensions: 31'0" x 7'7"  
Area: 233 sq. ft  
Counted as living area: No

Heated: No  
Finished: Yes  
Enclosed: No  
Contiguous: Yes  
Permitted: Yes  
Wet space: No  
Addition: No  
Conversion: No

7 Floor 2 - Kitchen



Dimensions: 13'9" x 7'11"  
Area: 109 sq. ft  
Counted as living area: Yes

Heated: Yes  
Finished: Yes  
Enclosed: Yes  
Contiguous: Yes  
Permitted: Yes  
Wet space: No  
Addition: No  
Conversion: No

8 Floor 2 - W.I.C.



Dimensions: 5'1" x 4'11"  
Area: 24 sq. ft  
Counted as living area: Yes

Heated: Yes  
Finished: Yes  
Enclosed: Yes  
Contiguous: Yes  
Permitted: Yes  
Wet space: No  
Addition: No  
Conversion: No

9 Floor 2 - Bath



Dimensions: 8'4" x 4'11"  
Area: 41 sq. ft  
Counted as living area: Yes

Heated: Yes  
Finished: Yes  
Enclosed: Yes  
Contiguous: Yes  
Permitted: Yes  
Wet space: Yes  
Addition: No  
Conversion: No

10 Floor 2 - Entry



Dimensions: 3'8" x 15'2"  
Area: 69 sq. ft  
Counted as living area: Yes

Heated: Yes  
Finished: Yes  
Enclosed: Yes  
Contiguous: Yes  
Permitted: Yes  
Wet space: No  
Addition: No  
Conversion: No

11 Floor 2 - Primary Bedroom



Dimensions: 13'5" x 9'9"  
Area: 131 sq. ft  
Counted as living area: Yes

Heated: Yes  
Finished: Yes  
Enclosed: Yes  
Contiguous: Yes  
Permitted: Yes  
Wet space: No  
Addition: No  
Conversion: No



12 Floor 2 - Patio



Dimensions: 41'5" x 18'7"  
Area: 683 sq. ft  
Counted as living area: No

Heated: No  
Finished: Yes  
Enclosed: No  
Contiguous: Yes  
Permitted: Yes  
Wet space: No  
Addition: No  
Conversion: No

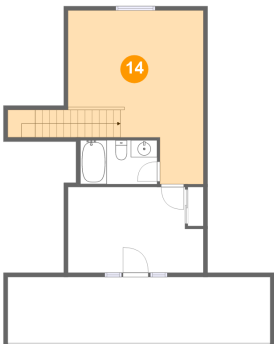
13 Floor 2 - Living Room



Dimensions: 16'11" x 15'6"  
Area: 293 sq. ft  
Counted as living area: Yes

Heated: Yes  
Finished: Yes  
Enclosed: Yes  
Contiguous: Yes  
Permitted: Yes  
Wet space: No  
Addition: No  
Conversion: No

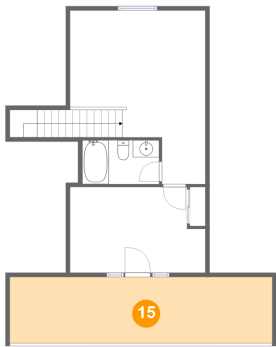
14 Floor 3 - Family Room



Dimensions: 15'10" x 20'4"  
Area: 285 sq. ft  
Counted as living area: Yes

Heated: Yes  
Finished: Yes  
Enclosed: Yes  
Contiguous: Yes  
Permitted: Yes  
Wet space: No  
Addition: No  
Conversion: No

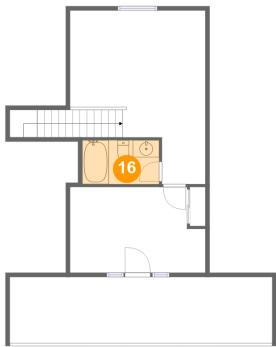
15 Floor 3 - Balcony



Dimensions: 30'9" x 7'9"  
Area: 237 sq. ft  
Counted as living area: No

Heated: No  
Finished: Yes  
Enclosed: No  
Contiguous: Yes  
Permitted: Yes  
Wet space: No  
Addition: No  
Conversion: No

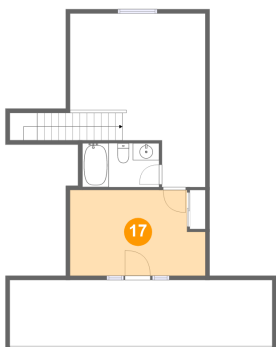
16 Floor 3 - Bath



Dimensions: 9'0" x 5'2"  
Area: 46 sq. ft  
Counted as living area: Yes

Heated: Yes  
Finished: Yes  
Enclosed: Yes  
Contiguous: Yes  
Permitted: Yes  
Wet space: Yes  
Addition: No  
Conversion: No

17 Floor 3 - Bedroom



Dimensions: 15'10" x 10'0"  
Area: 148 sq. ft  
Counted as living area: Yes

Heated: Yes  
Finished: Yes  
Enclosed: Yes  
Contiguous: Yes  
Permitted: Yes  
Wet space: No  
Addition: No  
Conversion: No