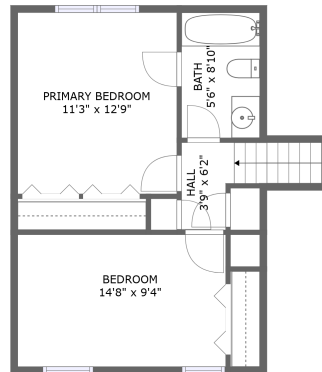
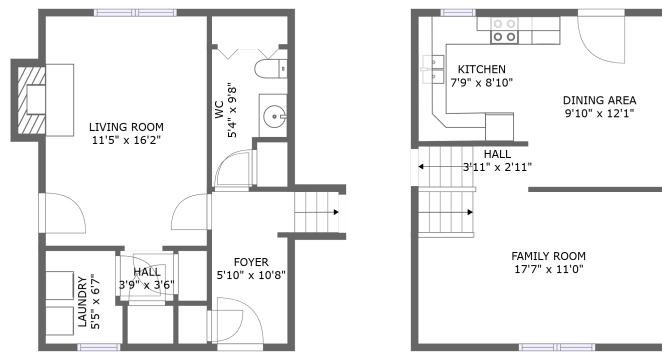


# 10407 Marbleridge Ct, North Chesterfield, VA, US



FLOOR 3





FLOOR 1

FLOOR 2

## Property summary

 **0** Garages

 **2** Bedrooms

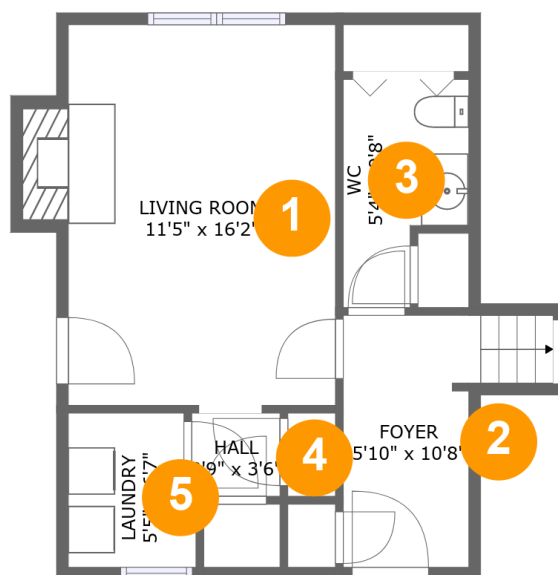
 **1** Bathrooms

 **1** Half baths

 **3** Floors

 **1,382**  
Gross living  
area sqft

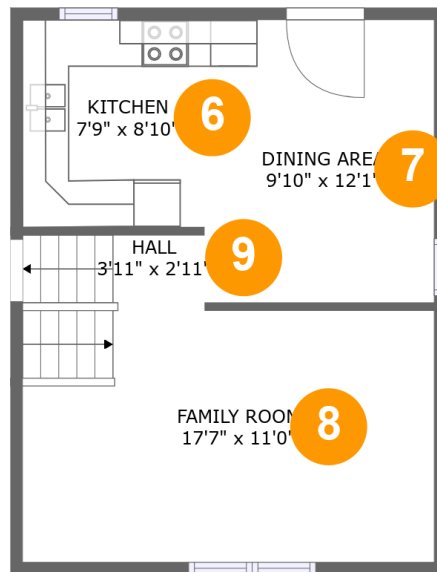
 **1,393**  
Total sqft

**10407 Marbleridge Ct, North Chesterfield, VA, US****Room dimensions**

Floor 1

Total sqft: 460 Living area: 449

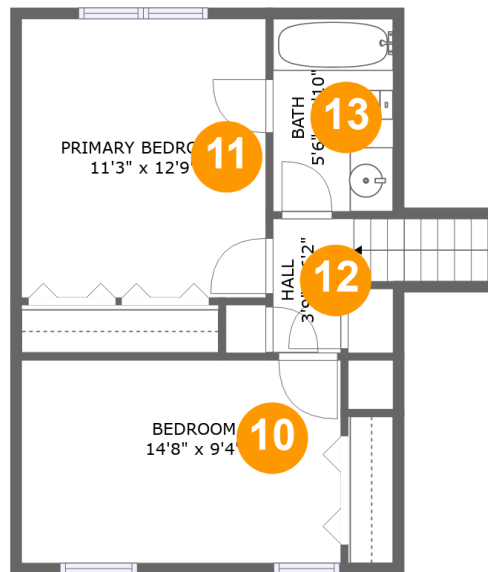
| # |             | Dimensions    | sqft       | Counted as living area |
|---|-------------|---------------|------------|------------------------|
| 1 | Living Room | 11'5" x 16'2" | 194 sq. ft | Yes                    |
| 2 | Foyer       | 5'10" x 10'8" | 68 sq. ft  | Yes                    |
| 3 | WC          | 5'4" x 9'8"   | 43 sq. ft  | Yes                    |
| 4 | Hall        | 3'9" x 3'6"   | 13 sq. ft  | Yes                    |
| 5 | Laundry     | 5'5" x 6'7"   | 34 sq. ft  | Yes                    |

**10407 Marbleridge Ct, North Chesterfield, VA, US****Room dimensions**

Floor 2

Total sqft: 447 Living area: 447

| # |             | Dimensions    | sqft       | Counted as living area |
|---|-------------|---------------|------------|------------------------|
| 6 | Kitchen     | 7'9" x 8'10"  | 68 sq. ft  | Yes                    |
| 7 | Dining Area | 9'10" x 12'1" | 118 sq. ft | Yes                    |
| 8 | Family Room | 17'7" x 11'0" | 191 sq. ft | Yes                    |
| 9 | Hall        | 3'11" x 2'11" | 22 sq. ft  | Yes                    |

**10407 Marbleridge Ct, North Chesterfield, VA, US****Room dimensions**

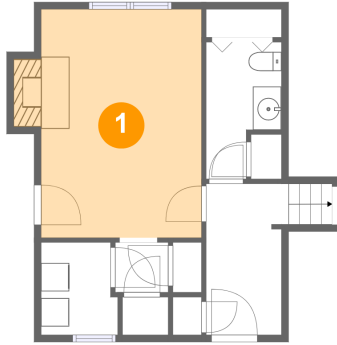
Floor 3

Total sqft: 486 Living area: 486

| #  |                 | Dimensions    | sqft       | Counted as living area |
|----|-----------------|---------------|------------|------------------------|
| 10 | Bedroom         | 14'8" x 9'4"  | 136 sq. ft | Yes                    |
| 11 | Primary Bedroom | 11'3" x 12'9" | 143 sq. ft | Yes                    |
| 12 | Hall            | 3'9" x 6'2"   | 39 sq. ft  | Yes                    |
| 13 | Bath            | 5'6" x 8'10"  | 49 sq. ft  | Yes                    |

# 10407 Marbleridge Ct, North Chesterfield, VA, US

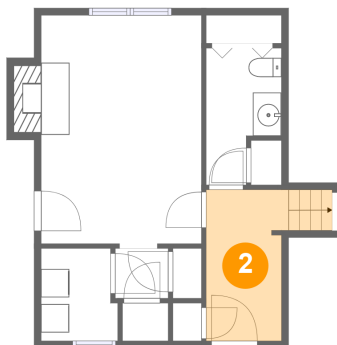
## 1 Floor 1 - Living Room



Dimensions: 11'5" x 16'2"  
Area: 194 sq. ft  
Counted as living area: Yes

Heated: Yes  
Finished: Yes  
Enclosed: Yes  
Contiguous: Yes  
Permitted: Yes  
Wet space: No  
Addition: No  
Conversion: No

## 2 Floor 1 - Foyer

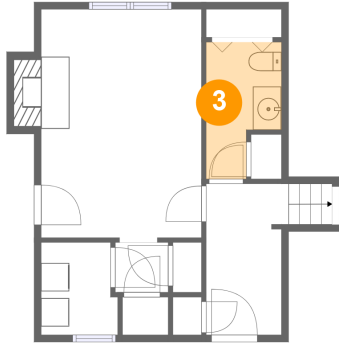


Dimensions: 5'10" x 10'8"  
Area: 68 sq. ft  
Counted as living area: Yes

Heated: Yes  
Finished: Yes  
Enclosed: Yes  
Contiguous: Yes  
Permitted: Yes  
Wet space: No  
Addition: No  
Conversion: No

# 10407 Marbleridge Ct, North Chesterfield, VA, US

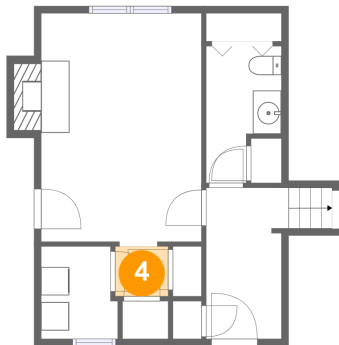
## 3 Floor 1 - WC



Dimensions: 5'4" x 9'8"  
Area: 43 sq. ft  
Counted as living area: Yes

Heated: Yes  
Finished: Yes  
Enclosed: Yes  
Contiguous: Yes  
Permitted: Yes  
Wet space: Yes  
Addition: No  
Conversion: No

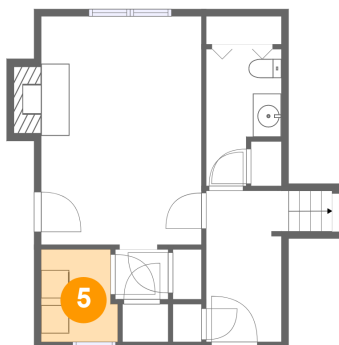
## 4 Floor 1 - Hall



Dimensions: 3'9" x 3'6"  
Area: 13 sq. ft  
Counted as living area: Yes

Heated: Yes  
Finished: Yes  
Enclosed: Yes  
Contiguous: Yes  
Permitted: Yes  
Wet space: No  
Addition: No  
Conversion: No

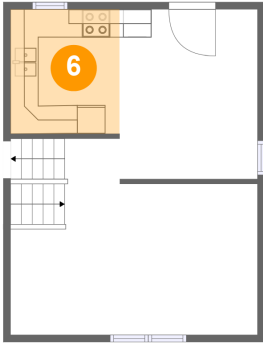
## 5 Floor 1 - Laundry



Dimensions: 5'5" x 6'7"  
Area: 34 sq. ft  
Counted as living area: Yes

Heated: Yes  
Finished: Yes  
Enclosed: Yes  
Contiguous: Yes  
Permitted: Yes  
Wet space: No  
Addition: No  
Conversion: No

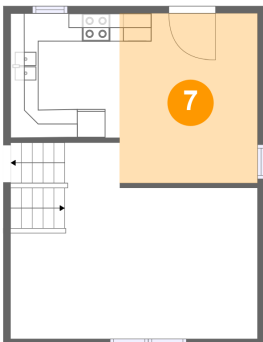
**6** Floor 2 - Kitchen



Dimensions: 7'9" x 8'10"  
Area: 68 sq. ft  
Counted as living area: Yes

Heated: Yes  
Finished: Yes  
Enclosed: Yes  
Contiguous: Yes  
Permitted: Yes  
Wet space: No  
Addition: No  
Conversion: No

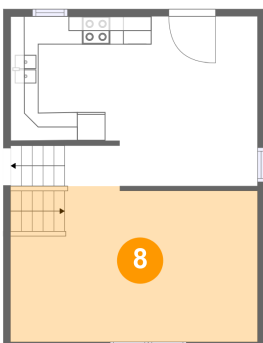
**7** Floor 2 - Dining Area



Dimensions: 9'10" x 12'1"  
Area: 118 sq. ft  
Counted as living area: Yes

Heated: Yes  
Finished: Yes  
Enclosed: Yes  
Contiguous: Yes  
Permitted: Yes  
Wet space: No  
Addition: No  
Conversion: No

**8** Floor 2 - Family Room

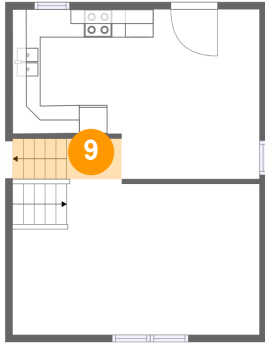


Dimensions: 17'7" x 11'0"  
Area: 191 sq. ft  
Counted as living area: Yes

Heated: Yes  
Finished: Yes  
Enclosed: Yes  
Contiguous: Yes  
Permitted: Yes  
Wet space: No  
Addition: No  
Conversion: No

# 10407 Marbleridge Ct, North Chesterfield, VA, US

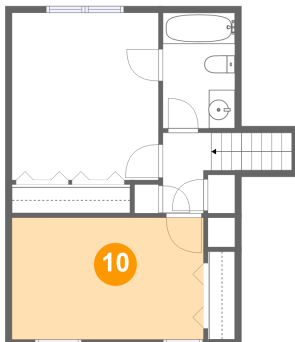
## 9 Floor 2 - Hall



Dimensions: 3'11" x 2'11"  
Area: 22 sq. ft  
Counted as living area: Yes

Heated: Yes  
Finished: Yes  
Enclosed: Yes  
Contiguous: Yes  
Permitted: Yes  
Wet space: No  
Addition: No  
Conversion: No

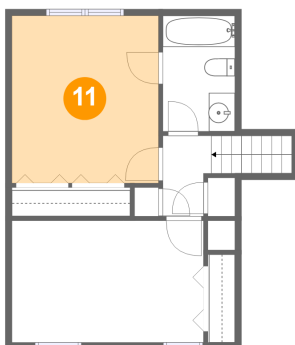
## 10 Floor 3 - Bedroom



Dimensions: 14'8" x 9'4"  
Area: 136 sq. ft  
Counted as living area: Yes

Heated: Yes  
Finished: Yes  
Enclosed: Yes  
Contiguous: Yes  
Permitted: Yes  
Wet space: No  
Addition: No  
Conversion: No

## 11 Floor 3 - Primary Bedroom

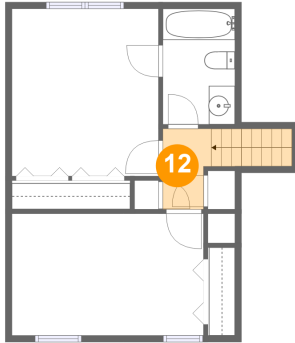


Dimensions: 11'3" x 12'9"  
Area: 143 sq. ft  
Counted as living area: Yes

Heated: Yes  
Finished: Yes  
Enclosed: Yes  
Contiguous: Yes  
Permitted: Yes  
Wet space: No  
Addition: No  
Conversion: No



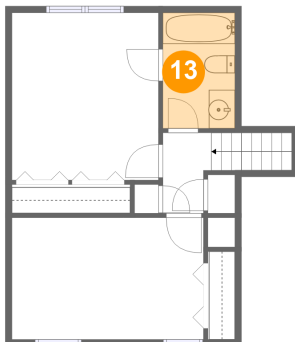
**12** Floor 3 - Hall



Dimensions: 3'9" x 6'2"  
Area: 39 sq. ft  
Counted as living area: Yes

Heated: Yes  
Finished: Yes  
Enclosed: Yes  
Contiguous: Yes  
Permitted: Yes  
Wet space: No  
Addition: No  
Conversion: No

**13** Floor 3 - Bath



Dimensions: 5'6" x 8'10"  
Area: 49 sq. ft  
Counted as living area: Yes

Heated: Yes  
Finished: Yes  
Enclosed: Yes  
Contiguous: Yes  
Permitted: Yes  
Wet space: Yes  
Addition: No  
Conversion: No