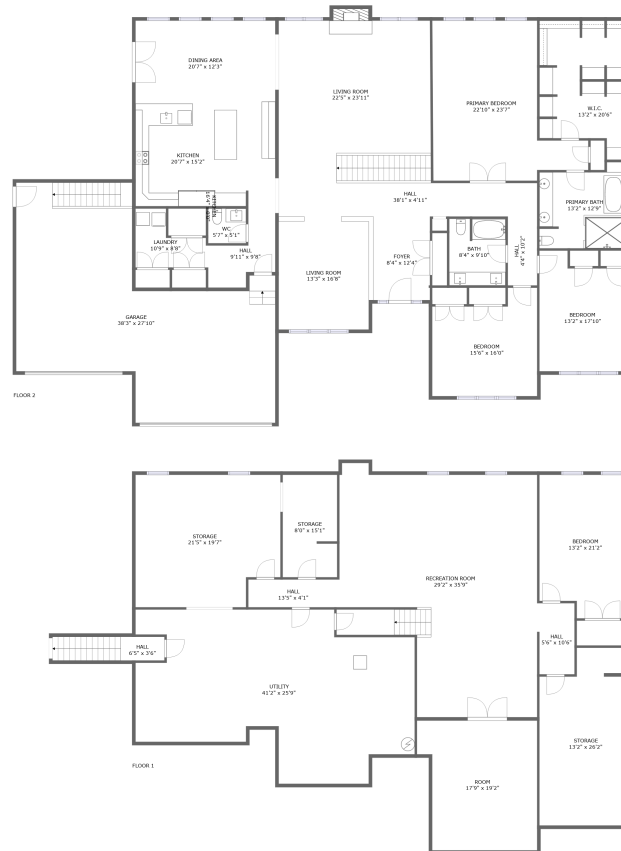



## Home report

1530 Creagan Court, Cumberland, Cumberland, Ontario,  
Canada, K4C 0A5



## Property summary


 **1** Garages

 **4** Bedrooms

 **2** Bathrooms

 **1** Half baths

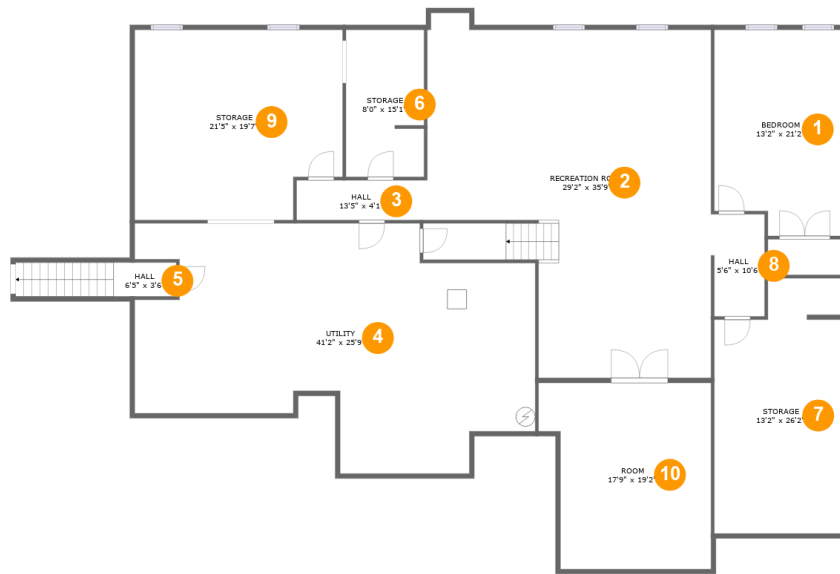
 **2** Floors

 **5,246**  
Gross living  
area sqft

 **8,028**  
Total sqft

Home report

1530 Creagan Court, Cumberland, Cumberland, Ontario,  
Canada, K4C 0A5



## Room dimensions

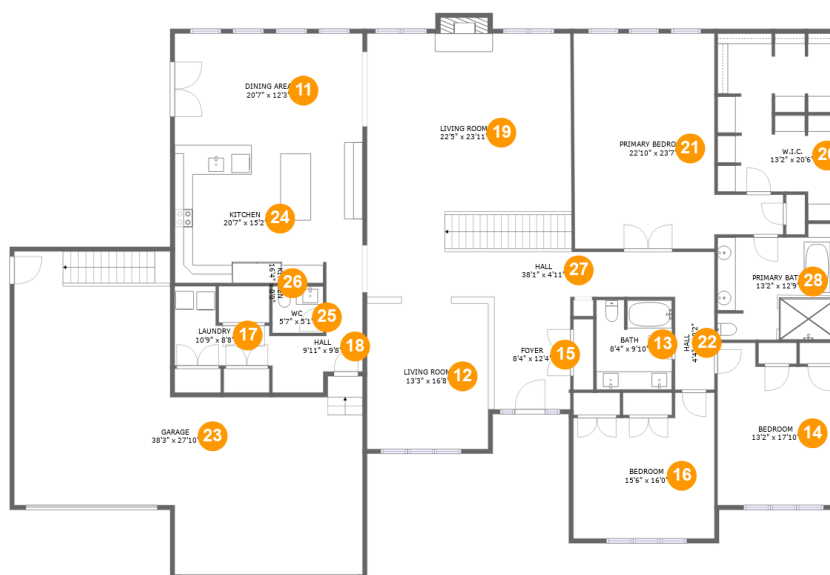
Floor 1

Total sqft: 3568 Living area: 1741

#		Dimensions	sqft	Counted as living area
1	Bedroom	13'2" x 21'2"	265 sq. ft	Yes
2	Recreation Room	29'2" x 35'9"	909 sq. ft	Yes
3	Hall	13'5" x 4'1"	54 sq. ft	Yes
4	Utility	41'2" x 25'9"	820 sq. ft	No
5	Hall	6'5" x 3'6"	58 sq. ft	No
6	Storage	8'0" x 15'1"	120 sq. ft	No
7	Storage	13'2" x 26'2"	320 sq. ft	No
8	Hall	5'6" x 10'6"	56 sq. ft	Yes
9	Storage	21'5" x 19'7"	395 sq. ft	No
10	Room	17'9" x 19'2"	308 sq. ft	Yes

## Home report

1530 Creagan Court, Cumberland, Cumberland, Ontario, Canada, K4C 0A5



## Room dimensions

Floor 2

Total sqft: 4460 Living area: 3505

#		Dimensions	sqft	Counted as living area
11	Dining Area	20'7" x 12'3"	253 sq. ft	Yes
12	Living Room	13'3" x 16'8"	230 sq. ft	Yes
13	Bath	8'4" x 9'10"	81 sq. ft	Yes
14	Bedroom	13'2" x 17'10"	211 sq. ft	Yes
15	Foyer	8'4" x 12'4"	103 sq. ft	Yes
16	Bedroom	15'6" x 16'0"	217 sq. ft	Yes
17	Laundry	10'9" x 8'8"	66 sq. ft	Yes
18	Hall	9'11" x 9'8"	75 sq. ft	Yes
19	Living Room	22'5" x 23'11"	546 sq. ft	Yes
20	W.I.C.	13'2" x 20'6"	230 sq. ft	Yes
21	Primary Bedroom	22'10" x 23'7"	397 sq. ft	Yes

Home report

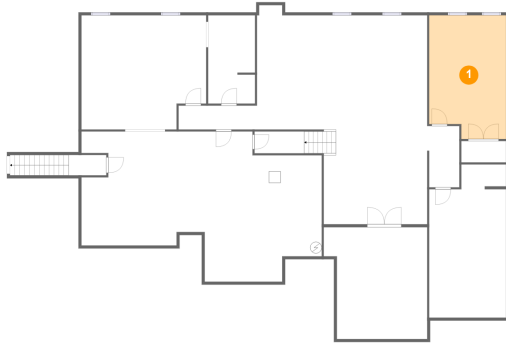
**1530 Creagan Court, Cumberland, Cumberland, Ontario,  
Canada, K4C 0A5**

#		Dimensions	sqft	Counted as living area
22	Hall	4'4" x 10'2"	44 sq. ft	Yes
23	Garage	38'3" x 27'10"	892 sq. ft	No
24	Kitchen	20'7" x 15'2"	311 sq. ft	Yes
25	WC	5'7" x 5'1"	29 sq. ft	Yes
26	Kitchen	16'4" x 0'0"	0 sq. ft	Yes
27	Hall	38'1" x 4'11"	189 sq. ft	Yes
28	Primary Bath	13'2" x 12'9"	152 sq. ft	Yes

Home report

1530 Creagan Court, Cumberland, Cumberland, Ontario,  
Canada, K4C 0A5

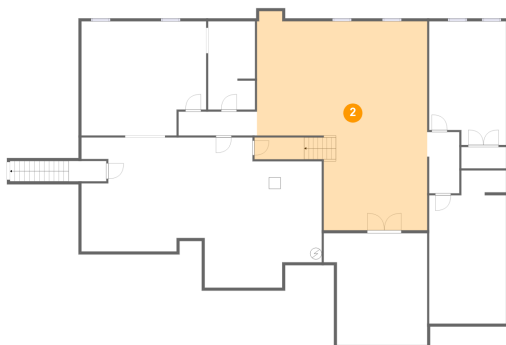
## 1 Floor 1 - Bedroom



Dimensions: 13'2" x 21'2"  
Area: 265 sq. ft  
Counted as living area: Yes

Heated: Yes  
Finished: Yes  
Enclosed: Yes  
Contiguous: Yes  
Permitted: Yes  
Wet space: No  
Addition: No  
Conversion: No

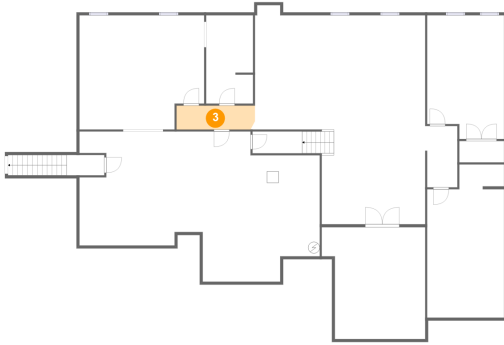
## 2 Floor 1 - Recreation Room



Dimensions: 29'2" x 35'9"  
Area: 909 sq. ft  
Counted as living area: Yes

Heated: Yes  
Finished: Yes  
Enclosed: Yes  
Contiguous: Yes  
Permitted: Yes  
Wet space: No  
Addition: No  
Conversion: No

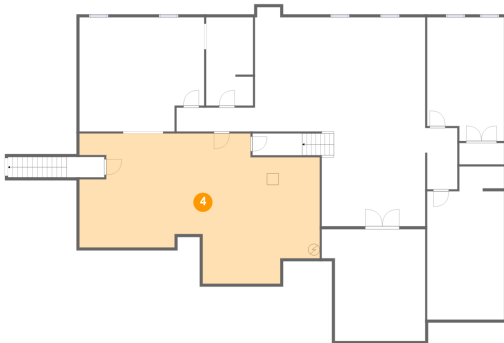
**3 Floor 1 - Hall**



Dimensions: 13'5" x 4'1"  
Area: 54 sq. ft  
Counted as living area: Yes

Heated: Yes  
Finished: Yes  
Enclosed: Yes  
Contiguous: Yes  
Permitted: Yes  
Wet space: No  
Addition: No  
Conversion: No

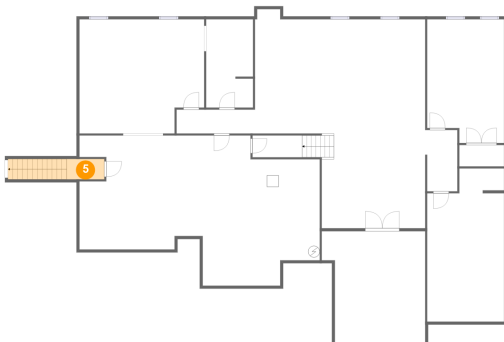
**4 Floor 1 - Utility**



Dimensions: 41'2" x 25'9"  
Area: 820 sq. ft  
Counted as living area: No

Heated: Yes  
Finished: No  
Enclosed: Yes  
Contiguous: Yes  
Permitted: Yes  
Wet space: No  
Addition: No  
Conversion: No

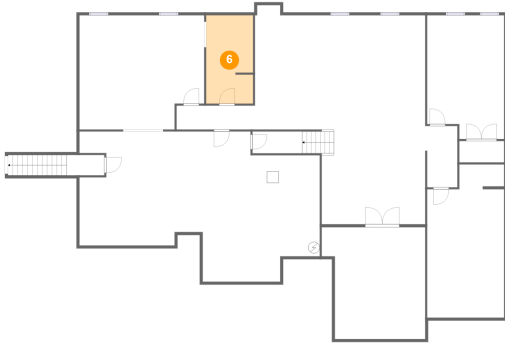
**5 Floor 1 - Hall**



Dimensions: 6'5" x 3'6"  
Area: 58 sq. ft  
Counted as living area: No

Heated: Yes  
Finished: Yes  
Enclosed: Yes  
Contiguous: No  
Permitted: Yes  
Wet space: No  
Addition: No  
Conversion: No

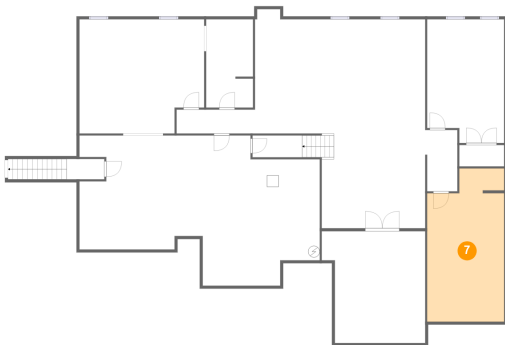
**6** Floor 1 - Storage



Dimensions: 8'0" x 15'1"  
Area: 120 sq. ft  
Counted as living area: No

Heated: No  
Finished: No  
Enclosed: No  
Contiguous: Yes  
Permitted: Yes  
Wet space: No  
Addition: No  
Conversion: No

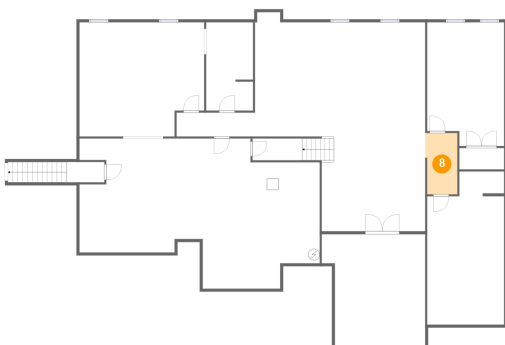
**7** Floor 1 - Storage



Dimensions: 13'2" x 26'2"  
Area: 320 sq. ft  
Counted as living area: No

Heated: No  
Finished: No  
Enclosed: No  
Contiguous: Yes  
Permitted: Yes  
Wet space: No  
Addition: No  
Conversion: No

**8** Floor 1 - Hall

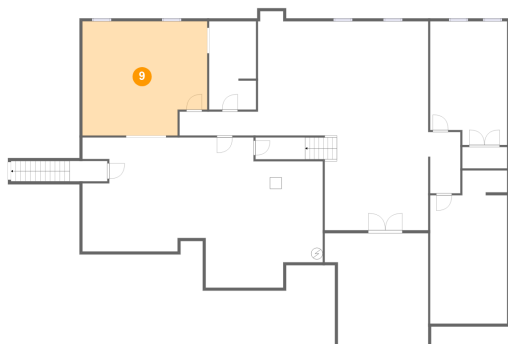


Dimensions: 5'6" x 10'6"  
Area: 56 sq. ft  
Counted as living area: Yes

Heated: Yes  
Finished: Yes  
Enclosed: Yes  
Contiguous: Yes  
Permitted: Yes  
Wet space: No  
Addition: No  
Conversion: No

1530 Creagan Court, Cumberland, Cumberland, Ontario,  
Canada, K4C 0A5

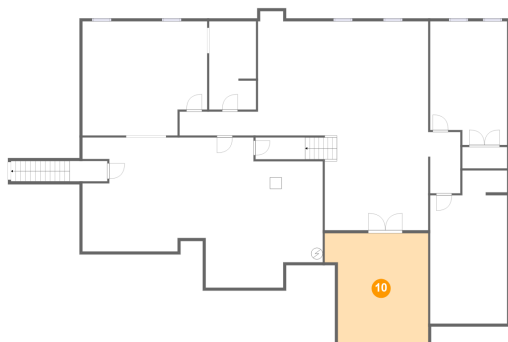
### 9 Floor 1 - Storage



Dimensions: 21'5" x 19'7"  
Area: 395 sq. ft  
Counted as living area: No

Heated: No  
Finished: No  
Enclosed: No  
Contiguous: Yes  
Permitted: Yes  
Wet space: No  
Addition: No  
Conversion: No

### 10 Floor 1 - Room



Dimensions: 17'9" x 19'2"  
Area: 308 sq. ft  
Counted as living area: Yes

Heated: Yes  
Finished: Yes  
Enclosed: Yes  
Contiguous: Yes  
Permitted: Yes  
Wet space: No  
Addition: No  
Conversion: No

### 11 Floor 2 - Dining Area



Dimensions: 20'7" x 12'3"  
Area: 253 sq. ft  
Counted as living area: Yes

Heated: Yes  
Finished: Yes  
Enclosed: Yes  
Contiguous: Yes  
Permitted: Yes  
Wet space: No  
Addition: No  
Conversion: No



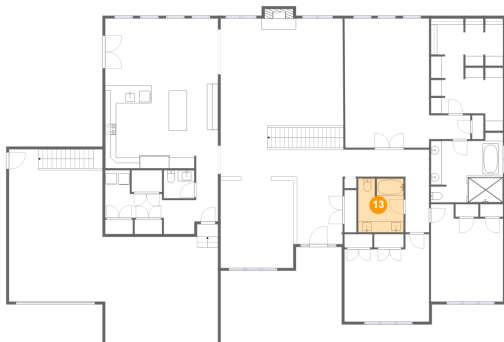
**12** Floor 2 - Living Room



Dimensions: 13'3" x 16'8"  
Area: 230 sq. ft  
Counted as living area: Yes

Heated: Yes  
Finished: Yes  
Enclosed: Yes  
Contiguous: Yes  
Permitted: Yes  
Wet space: No  
Addition: No  
Conversion: No

**13** Floor 2 - Bath



Dimensions: 8'4" x 9'10"  
Area: 81 sq. ft  
Counted as living area: Yes

Heated: Yes  
Finished: Yes  
Enclosed: Yes  
Contiguous: Yes  
Permitted: Yes  
Wet space: Yes  
Addition: No  
Conversion: No

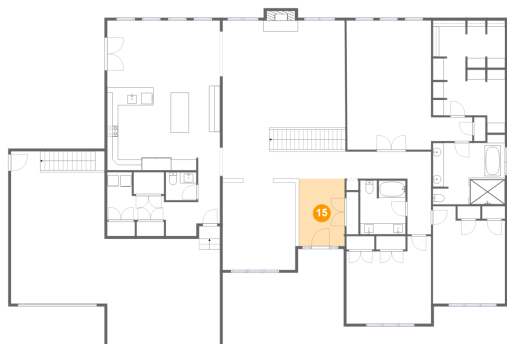
**14** Floor 2 - Bedroom



Dimensions: 13'2" x 17'10"  
Area: 211 sq. ft  
Counted as living area: Yes

Heated: Yes  
Finished: Yes  
Enclosed: Yes  
Contiguous: Yes  
Permitted: Yes  
Wet space: No  
Addition: No  
Conversion: No

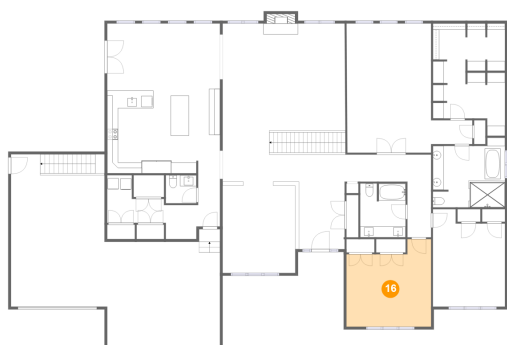
**15** Floor 2 - Foyer



Dimensions: 8'4" x 12'4"  
Area: 103 sq. ft  
Counted as living area: Yes

Heated: Yes  
Finished: Yes  
Enclosed: Yes  
Contiguous: Yes  
Permitted: Yes  
Wet space: No  
Addition: No  
Conversion: No

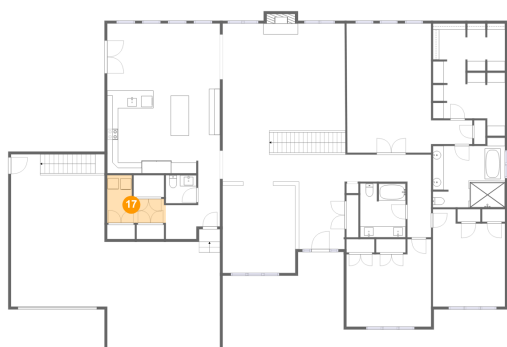
**16** Floor 2 - Bedroom



Dimensions: 15'6" x 16'0"  
Area: 217 sq. ft  
Counted as living area: Yes

Heated: Yes  
Finished: Yes  
Enclosed: Yes  
Contiguous: Yes  
Permitted: Yes  
Wet space: No  
Addition: No  
Conversion: No

**17** Floor 2 - Laundry



Dimensions: 10'9" x 8'8"  
Area: 66 sq. ft  
Counted as living area: Yes

Heated: Yes  
Finished: Yes  
Enclosed: Yes  
Contiguous: Yes  
Permitted: Yes  
Wet space: No  
Addition: No  
Conversion: No

**18** Floor 2 - Hall



Dimensions: 9'11" x 9'8"  
Area: 75 sq. ft  
Counted as living area: Yes

Heated: Yes  
Finished: Yes  
Enclosed: Yes  
Contiguous: Yes  
Permitted: Yes  
Wet space: No  
Addition: No  
Conversion: No

**19** Floor 2 - Living Room



Dimensions: 22'5" x 23'11"  
Area: 546 sq. ft  
Counted as living area: Yes

Heated: Yes  
Finished: Yes  
Enclosed: Yes  
Contiguous: Yes  
Permitted: Yes  
Wet space: No  
Addition: No  
Conversion: No

**20** Floor 2 - W.I.C.



Dimensions: 13'2" x 20'6"  
Area: 230 sq. ft  
Counted as living area: Yes

Heated: Yes  
Finished: Yes  
Enclosed: Yes  
Contiguous: Yes  
Permitted: Yes  
Wet space: No  
Addition: No  
Conversion: No

## 21 Floor 2 - Primary Bedroom



Dimensions: 22'10" x 23'7"  
Area: 397 sq. ft  
Counted as living area: Yes

Heated: Yes  
Finished: Yes  
Enclosed: Yes  
Contiguous: Yes  
Permitted: Yes  
Wet space: No  
Addition: No  
Conversion: No

## 22 Floor 2 - Hall



Dimensions: 4'4" x 10'2"  
Area: 44 sq. ft  
Counted as living area: Yes

Heated: Yes  
Finished: Yes  
Enclosed: Yes  
Contiguous: Yes  
Permitted: Yes  
Wet space: No  
Addition: No  
Conversion: No

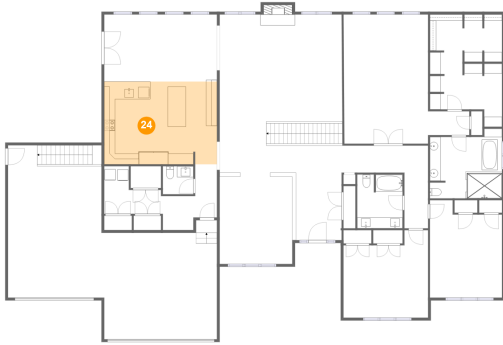
## 23 Floor 2 - Garage



Dimensions: 38'3" x 27'10"  
Area: 892 sq. ft  
Counted as living area: No

Heated: No  
Finished: No  
Enclosed: Yes  
Contiguous: Yes  
Permitted: Yes  
Wet space: No  
Addition: No  
Conversion: No

**24** Floor 2 - Kitchen



Dimensions: 20'7" x 15'2"  
Area: 311 sq. ft  
Counted as living area: Yes

Heated: Yes  
Finished: Yes  
Enclosed: Yes  
Contiguous: Yes  
Permitted: Yes  
Wet space: No  
Addition: No  
Conversion: No

**25** Floor 2 - WC



Dimensions: 5'7" x 5'1"  
Area: 29 sq. ft  
Counted as living area: Yes

Heated: Yes  
Finished: Yes  
Enclosed: Yes  
Contiguous: Yes  
Permitted: Yes  
Wet space: Yes  
Addition: No  
Conversion: No

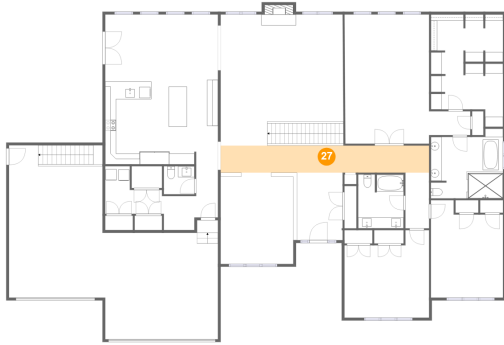
**26** Floor 2 - Kitchen



Dimensions: 16'4" x 0'0"  
Area: 0 sq. ft  
Counted as living area: Yes

Heated: Yes  
Finished: Yes  
Enclosed: Yes  
Contiguous: Yes  
Permitted: Yes  
Wet space: No  
Addition: No  
Conversion: No

**27** Floor 2 - Hall



Dimensions: 38'1" x 4'11"  
Area: 189 sq. ft  
Counted as living area: Yes

Heated: Yes  
Finished: Yes  
Enclosed: Yes  
Contiguous: Yes  
Permitted: Yes  
Wet space: No  
Addition: No  
Conversion: No

**28** Floor 2 - Primary Bath



Dimensions: 13'2" x 12'9"  
Area: 152 sq. ft  
Counted as living area: Yes

Heated: Yes  
Finished: Yes  
Enclosed: Yes  
Contiguous: Yes  
Permitted: Yes  
Wet space: Yes  
Addition: No  
Conversion: No