

Total Area: 6030 sq. ft

Below Ground: 1916 sq. ft, Floor 2: 2601 sq. ft, Floor 3: 1513 sq. ft
Excluded: Utility 245 sq. ft, Storage 141 sq. ft, Basement 236 sq. ft, Patio 1658 sq. ft, Porch 819 sq. ft, Garage 594 sq. ft, Screened porch 276 sq. ft, Deck 810 sq. ft, Open to below 511 sq. ft, Walls: 430 sq. ft

Property summary

**3**
Floors

**6**
Bedrooms

**4**
Bathrooms

Home report

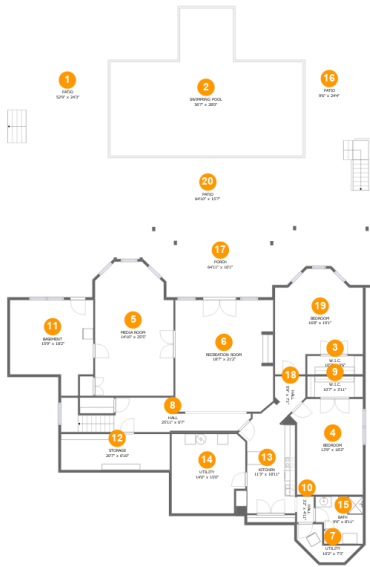
12185 Meadows Ln,Johns Creek,GA,US

 **1**
Half baths

 **1**
Garages

Home report

12185 Meadows Ln,Johns Creek,GA,US



Room dimensions

Floor 1 Below ground Total:1916sqft Excluded: 3024sqft

| # | | Max Dimensions | sqft | Included |
|----|-----------------|----------------|------------|----------|
| 1 | Patio | 52'9" x 24'3" | 606 sq. ft | No |
| 2 | Swimming Pool | 36'7" x 28'0" | 756 sq. ft | No |
| 3 | W.I.C. | 10'7" x 3'6" | 37 sq. ft | Yes |
| 4 | Bedroom | 13'9" x 18'2" | 227 sq. ft | Yes |
| 5 | Media Room | 14'10" x 25'5" | 349 sq. ft | Yes |
| 6 | Recreation Room | 18'7" x 21'2" | 390 sq. ft | Yes |
| 7 | Utility | 10'2" x 7'3" | 44 sq. ft | No |
| 8 | Hall | 25'11" x 6'7" | 164 sq. ft | Yes |
| 9 | W.I.C. | 10'7" x 3'11" | 42 sq. ft | Yes |
| 10 | Hall | 3'2" x 4'11" | 16 sq. ft | Yes |
| 11 | Basement | 15'9" x 18'2" | 236 sq. ft | No |

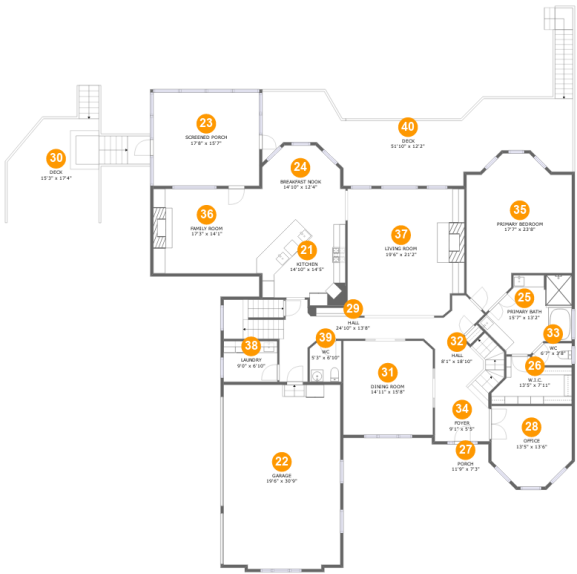
Home report

12185 Meadows Ln, Johns Creek, GA, US

| # | | Max Dimensions | sqft | Included |
|----|---------|----------------|------------|----------|
| 12 | Storage | 20'7" x 6'10" | 141 sq. ft | No |
| 13 | Kitchen | 11'3" x 18'11" | 180 sq. ft | Yes |
| 14 | Utility | 14'0" x 15'0" | 199 sq. ft | No |
| 15 | Bath | 9'0" x 8'11" | 67 sq. ft | Yes |
| 16 | Patio | 9'6" x 24'4" | 239 sq. ft | No |
| 17 | Porch | 64'11" x 16'1" | 744 sq. ft | No |
| 18 | Hall | 5'9" x 7'1" | 39 sq. ft | Yes |
| 19 | Bedroom | 16'8" x 19'1" | 261 sq. ft | Yes |
| 20 | Patio | 64'10" x 15'7" | 813 sq. ft | No |

Home report

12185 Meadows Ln,Johns Creek,GA,US



Room dimensions

Floor 2 Total:2601sqft Excluded: 1755sqft

| # | | Max Dimensions | sqft | Included |
|----|----------------|----------------|------------|----------|
| 21 | Kitchen | 14'10" x 14'5" | 198 sq. ft | Yes |
| 22 | Garage | 19'6" x 30'9" | 593 sq. ft | No |
| 23 | Screened Porch | 17'8" x 15'7" | 276 sq. ft | No |
| 24 | Breakfast Nook | 14'10" x 12'4" | 155 sq. ft | Yes |
| 25 | Primary Bath | 15'7" x 13'2" | 150 sq. ft | Yes |
| 26 | W.I.C. | 13'5" x 7'11" | 82 sq. ft | Yes |
| 27 | Porch | 11'9" x 7'3" | 75 sq. ft | No |
| 28 | Office | 13'5" x 13'6" | 161 sq. ft | Yes |
| 29 | Hall | 24'10" x 13'8" | 210 sq. ft | Yes |
| 30 | Deck | 15'3" x 17'4" | 284 sq. ft | No |
| 31 | Dining Room | 14'11" x 15'8" | 233 sq. ft | Yes |

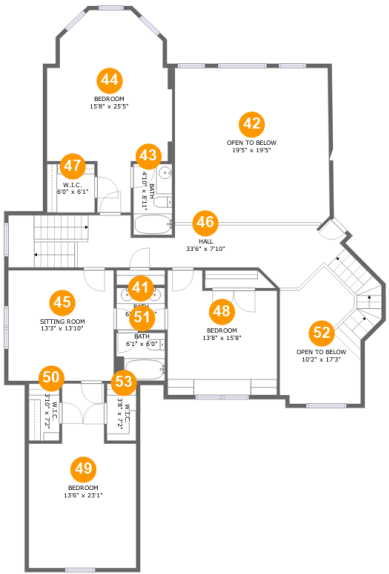
Home report

12185 Meadows Ln, Johns Creek, GA, US

| # | | Max Dimensions | sqft | Included |
|----|-----------------|----------------|------------|----------|
| 32 | Hall | 8'1" x 18'10" | 160 sq. ft | Yes |
| 33 | WC | 6'7" x 3'8" | 22 sq. ft | Yes |
| 34 | Foyer | 9'1" x 5'5" | 50 sq. ft | Yes |
| 35 | Primary Bedroom | 17'7" x 23'8" | 352 sq. ft | Yes |
| 36 | Family Room | 17'3" x 14'1" | 243 sq. ft | Yes |
| 37 | Living Room | 19'6" x 21'2" | 403 sq. ft | Yes |
| 38 | Laundry | 9'0" x 6'10" | 61 sq. ft | Yes |
| 39 | WC | 5'3" x 6'10" | 35 sq. ft | Yes |
| 40 | Deck | 51'10" x 12'2" | 526 sq. ft | No |

Home report

12185 Meadows Ln,Johns Creek,GA,US



Room dimensions

Floor 3 Total:1513sqft Excluded: 511sqft

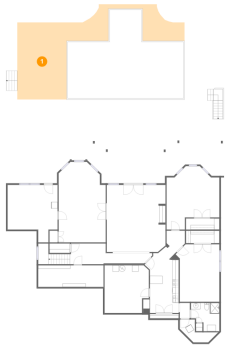
| # | | Max Dimensions | sqft | Included |
|----|---------------|----------------|------------|----------|
| 41 | Bath | 6'1" x 5'4" | 32 sq. ft | Yes |
| 42 | Open To Below | 19'5" x 19'5" | 374 sq. ft | No |
| 43 | Bath | 4'10" x 8'11" | 43 sq. ft | Yes |
| 44 | Bedroom | 15'8" x 25'5" | 290 sq. ft | Yes |
| 45 | Sitting Room | 13'3" x 13'10" | 183 sq. ft | Yes |
| 46 | Hall | 33'6" x 7'10" | 300 sq. ft | Yes |
| 47 | W.I.C. | 6'0" x 6'1" | 37 sq. ft | Yes |
| 48 | Bedroom | 13'8" x 15'8" | 191 sq. ft | Yes |
| 49 | Bedroom | 13'6" x 23'1" | 250 sq. ft | Yes |
| 50 | W.I.C. | 3'10" x 7'2" | 28 sq. ft | Yes |
| 51 | Bath | 6'1" x 6'0" | 37 sq. ft | Yes |

Home report

12185 Meadows Ln, Johns Creek, GA, US

| # | | Max Dimensions | sqft | Included |
|----|---------------|----------------|------------|----------|
| 52 | Open To Below | 10'2" x 17'3" | 137 sq. ft | No |
| 53 | W.I.C. | 3'8" x 7'2" | 26 sq. ft | Yes |

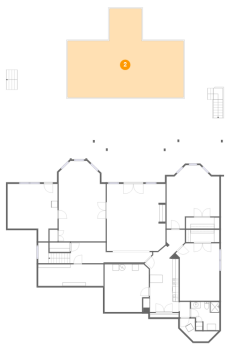
1 Floor 1 - Patio



Max Dimensions: 52'9" x 24'3"
Calculated Area: 606 sq. ft
Included: No

Heated: No
Finished: Yes
Enclosed: No
Contiguous: Yes
Permitted: Yes
Wet space: No
Addition: No
Conversion: No

2 Floor 1 - Swimming Pool



Max Dimensions: 36'7" x 28'0"
Calculated Area: 756 sq. ft
Included: No

Heated: No
Finished: No
Enclosed: No
Contiguous: Yes
Permitted: No
Wet space: No
Addition: No
Conversion: No

3 Floor 1 - W.I.C.



Max Dimensions: 10'7" x 3'6"
Calculated Area: 37 sq. ft
Included: Yes

Heated: Yes
Finished: Yes
Enclosed: Yes
Contiguous: Yes
Permitted: Yes
Wet space: No
Addition: No
Conversion: No

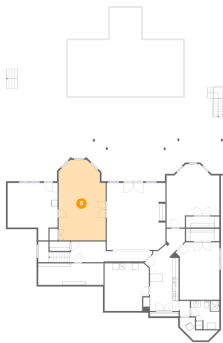
4 Floor 1 - Bedroom



Max Dimensions: 13'9" x 18'2"
Calculated Area: 227 sq. ft
Included: Yes

Heated: Yes
Finished: Yes
Enclosed: Yes
Contiguous: Yes
Permitted: Yes
Wet space: No
Addition: No
Conversion: No

5 Floor 1 - Media Room



Max Dimensions: 14'10" x 25'5"
Calculated Area: 349 sq. ft
Included: Yes

Heated: Yes
Finished: Yes
Enclosed: Yes
Contiguous: Yes
Permitted: Yes
Wet space: No
Addition: No
Conversion: No

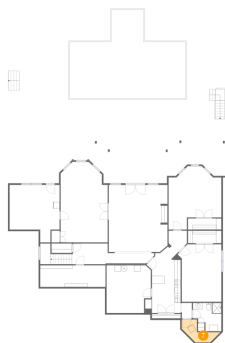
6 Floor 1 - Recreation Room



Max Dimensions: 18'7" x 21'2"
Calculated Area: 390 sq. ft
Included: Yes

Heated: Yes
Finished: Yes
Enclosed: Yes
Contiguous: Yes
Permitted: Yes
Wet space: No
Addition: No
Conversion: No

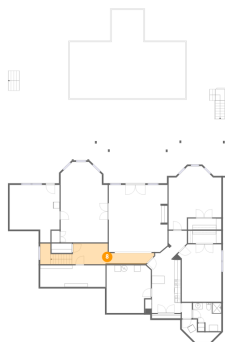
7 Floor 1 - Utility



Max Dimensions: 10'2" x 7'3"
Calculated Area: 44 sq. ft
Included: No

Heated: Yes
Finished: No
Enclosed: Yes
Contiguous: Yes
Permitted: Yes
Wet space: No
Addition: No
Conversion: No

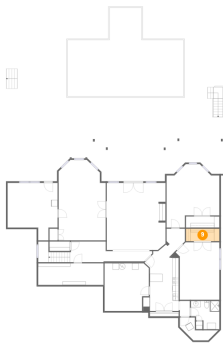
8 Floor 1 - Hall



Max Dimensions: 25'11" x 6'7"
Calculated Area: 164 sq. ft
Included: Yes

Heated: Yes
Finished: Yes
Enclosed: Yes
Contiguous: Yes
Permitted: Yes
Wet space: No
Addition: No
Conversion: No

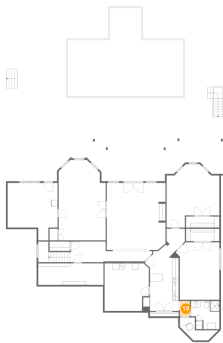
9 Floor 1 - W.I.C.



Max Dimensions: 10'7" x 3'11"
Calculated Area: 42 sq. ft
Included: Yes

Heated: Yes
Finished: Yes
Enclosed: Yes
Contiguous: Yes
Permitted: Yes
Wet space: No
Addition: No
Conversion: No

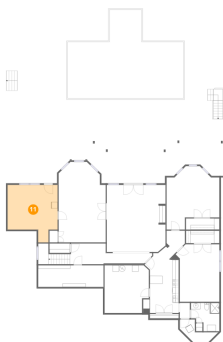
10 Floor 1 - Hall



Max Dimensions: 3'2" x 4'11"
Calculated Area: 16 sq. ft
Included: Yes

Heated: Yes
Finished: Yes
Enclosed: Yes
Contiguous: Yes
Permitted: Yes
Wet space: No
Addition: No
Conversion: No

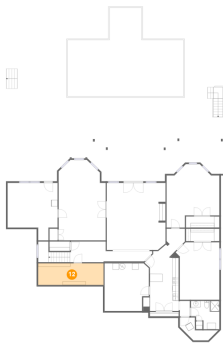
11 Floor 1 - Basement



Max Dimensions: 15'9" x 18'2"
Calculated Area: 236 sq. ft
Included: No

Heated: Yes
Finished: No
Enclosed: Yes
Contiguous: Yes
Permitted: Yes
Wet space: No
Addition: No
Conversion: No

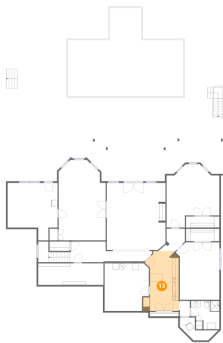
12 Floor 1 - Storage



Max Dimensions: 20'7" x 6'10"
Calculated Area: 141 sq. ft
Included: No

Heated: No
Finished: No
Enclosed: No
Contiguous: Yes
Permitted: Yes
Wet space: No
Addition: No
Conversion: No

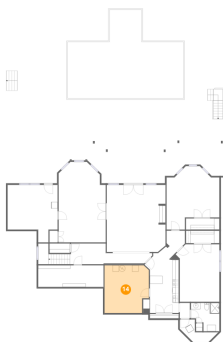
13 Floor 1 - Kitchen



Max Dimensions: 11'3" x 18'11"
Calculated Area: 180 sq. ft
Included: Yes

Heated: Yes
Finished: Yes
Enclosed: Yes
Contiguous: Yes
Permitted: Yes
Wet space: No
Addition: No
Conversion: No

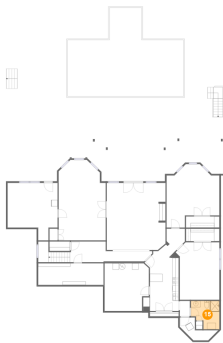
14 Floor 1 - Utility



Max Dimensions: 14'0" x 15'0"
Calculated Area: 199 sq. ft
Included: No

Heated: Yes
Finished: No
Enclosed: Yes
Contiguous: Yes
Permitted: Yes
Wet space: No
Addition: No
Conversion: No

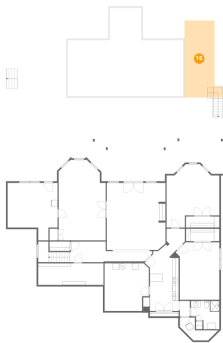
15 Floor 1 - Bath



Max Dimensions: 9'0" x 8'11"
Calculated Area: 67 sq. ft
Included: Yes

Heated: Yes
Finished: Yes
Enclosed: Yes
Contiguous: Yes
Permitted: Yes
Wet space: Yes
Addition: No
Conversion: No

16 Floor 1 - Patio



Max Dimensions: 9'6" x 24'4"
Calculated Area: 239 sq. ft
Included: No

Heated: No
Finished: Yes
Enclosed: No
Contiguous: Yes
Permitted: Yes
Wet space: No
Addition: No
Conversion: No

17 Floor 1 - Porch



Max Dimensions: 64'11" x 16'1"
Calculated Area: 744 sq. ft
Included: No

Heated: No
Finished: Yes
Enclosed: No
Contiguous: Yes
Permitted: Yes
Wet space: No
Addition: No
Conversion: No

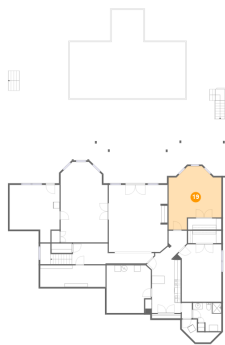
18 Floor 1 - Hall



Max Dimensions: 5'9" x 7'1"
Calculated Area: 39 sq. ft
Included: Yes

Heated: Yes
Finished: Yes
Enclosed: Yes
Contiguous: Yes
Permitted: Yes
Wet space: No
Addition: No
Conversion: No

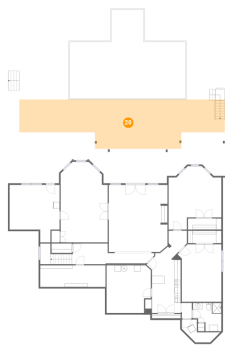
19 Floor 1 - Bedroom



Max Dimensions: 16'8" x 19'1"
Calculated Area: 261 sq. ft
Included: Yes

Heated: Yes
Finished: Yes
Enclosed: Yes
Contiguous: Yes
Permitted: Yes
Wet space: No
Addition: No
Conversion: No

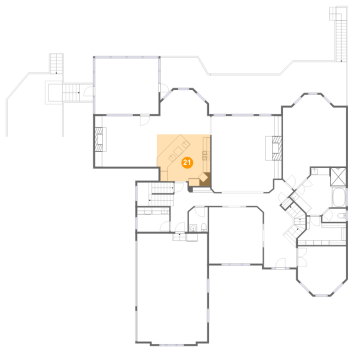
20 Floor 1 - Patio



Max Dimensions: 64'10" x 15'7"
Calculated Area: 813 sq. ft
Included: No

Heated: No
Finished: Yes
Enclosed: No
Contiguous: Yes
Permitted: Yes
Wet space: No
Addition: No
Conversion: No

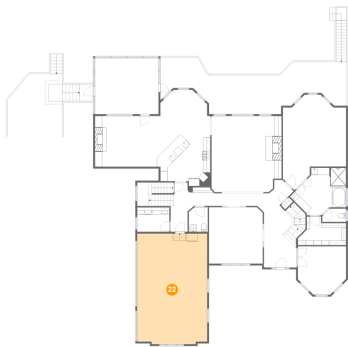
21 Floor 2 - Kitchen



Max Dimensions: 14'10" x 14'5"
Calculated Area: 198 sq. ft
Included: Yes

Heated: Yes
Finished: Yes
Enclosed: Yes
Contiguous: Yes
Permitted: Yes
Wet space: No
Addition: No
Conversion: No

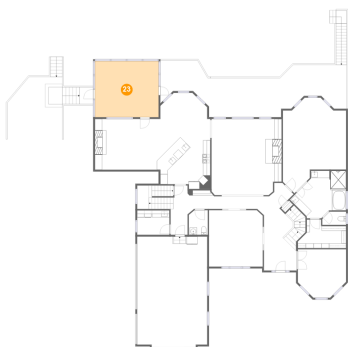
22 Floor 2 - Garage



Max Dimensions: 19'6" x 30'9"
Calculated Area: 593 sq. ft
Included: No

Heated: No
Finished: No
Enclosed: Yes
Contiguous: Yes
Permitted: Yes
Wet space: No
Addition: No
Conversion: No

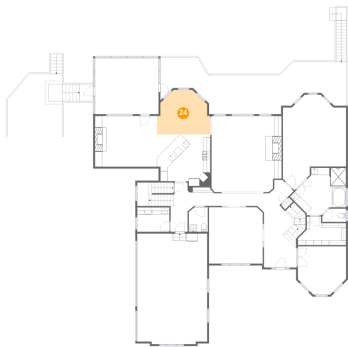
23 Floor 2 - Screened Porch



Max Dimensions: 17'8" x 15'7"
Calculated Area: 276 sq. ft
Included: No

Heated: No
Finished: Yes
Enclosed: No
Contiguous: Yes
Permitted: Yes
Wet space: No
Addition: No
Conversion: No

24 Floor 2 - Breakfast Nook



Max Dimensions: 14'10" x 12'4"
Calculated Area: 155 sq. ft
Included: Yes

Heated: Yes
Finished: Yes
Enclosed: Yes
Contiguous: Yes
Permitted: Yes
Wet space: No
Addition: No
Conversion: No

25 Floor 2 - Primary Bath



Max Dimensions: 15'7" x 13'2"
Calculated Area: 150 sq. ft
Included: Yes

Heated: Yes
Finished: Yes
Enclosed: Yes
Contiguous: Yes
Permitted: Yes
Wet space: Yes
Addition: No
Conversion: No

26 Floor 2 - W.I.C.



Max Dimensions: 13'5" x 7'11"
Calculated Area: 82 sq. ft
Included: Yes

Heated: Yes
Finished: Yes
Enclosed: Yes
Contiguous: Yes
Permitted: Yes
Wet space: No
Addition: No
Conversion: No

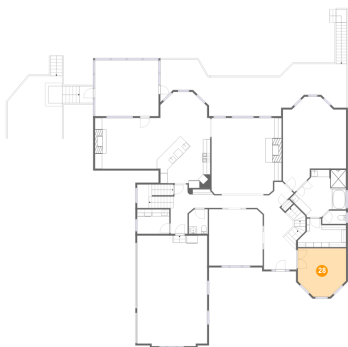
27 Floor 2 - Porch



Max Dimensions: 11'9" x 7'3"
Calculated Area: 75 sq. ft
Included: No

Heated: No
Finished: Yes
Enclosed: No
Contiguous: Yes
Permitted: Yes
Wet space: No
Addition: No
Conversion: No

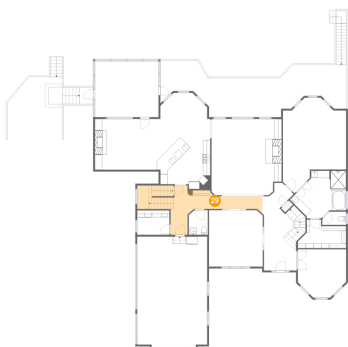
28 Floor 2 - Office



Max Dimensions: 13'5" x 13'6"
Calculated Area: 161 sq. ft
Included: Yes

Heated: Yes
Finished: Yes
Enclosed: Yes
Contiguous: Yes
Permitted: Yes
Wet space: No
Addition: No
Conversion: No

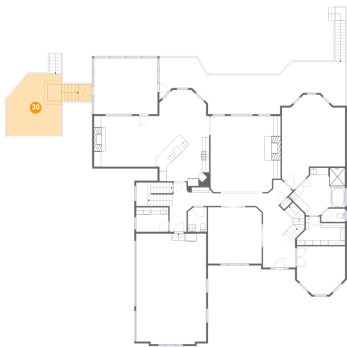
29 Floor 2 - Hall



Max Dimensions: 24'10" x 13'8"
Calculated Area: 210 sq. ft
Included: Yes

Heated: Yes
Finished: Yes
Enclosed: Yes
Contiguous: Yes
Permitted: Yes
Wet space: No
Addition: No
Conversion: No

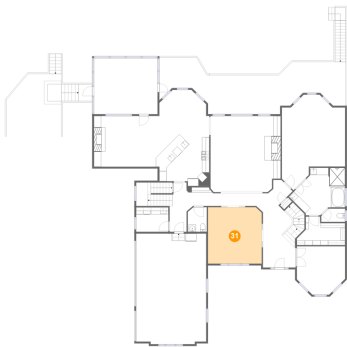
30 Floor 2 - Deck



Max Dimensions: 15'3" x 17'4"
Calculated Area: 284 sq. ft
Included: No

Heated: No
Finished: Yes
Enclosed: No
Contiguous: Yes
Permitted: Yes
Wet space: No
Addition: No
Conversion: No

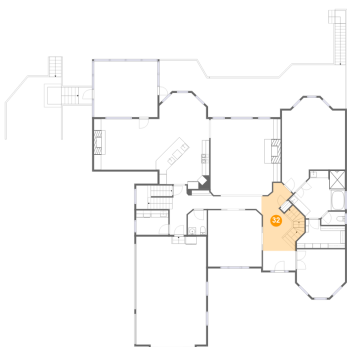
31 Floor 2 - Dining Room



Max Dimensions: 14'11" x 15'8"
Calculated Area: 233 sq. ft
Included: Yes

Heated: Yes
Finished: Yes
Enclosed: Yes
Contiguous: Yes
Permitted: Yes
Wet space: No
Addition: No
Conversion: No

32 Floor 2 - Hall



Max Dimensions: 8'1" x 18'10"
Calculated Area: 160 sq. ft
Included: Yes

Heated: Yes
Finished: Yes
Enclosed: Yes
Contiguous: Yes
Permitted: Yes
Wet space: No
Addition: No
Conversion: No

33 Floor 2 - WC



Max Dimensions: 6'7" x 3'8"
Calculated Area: 22 sq. ft
Included: Yes

Heated: Yes
Finished: Yes
Enclosed: Yes
Contiguous: Yes
Permitted: Yes
Wet space: Yes
Addition: No
Conversion: No

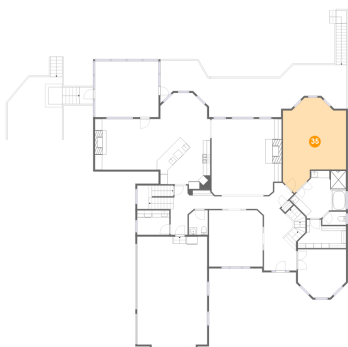
34 Floor 2 - Foyer



Max Dimensions: 9'1" x 5'5"
Calculated Area: 50 sq. ft
Included: Yes

Heated: Yes
Finished: Yes
Enclosed: Yes
Contiguous: Yes
Permitted: Yes
Wet space: No
Addition: No
Conversion: No

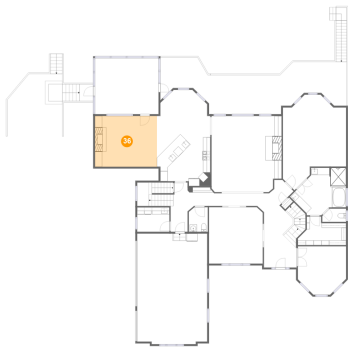
35 Floor 2 - Primary Bedroom



Max Dimensions: 17'7" x 23'8"
Calculated Area: 352 sq. ft
Included: Yes

Heated: Yes
Finished: Yes
Enclosed: Yes
Contiguous: Yes
Permitted: Yes
Wet space: No
Addition: No
Conversion: No

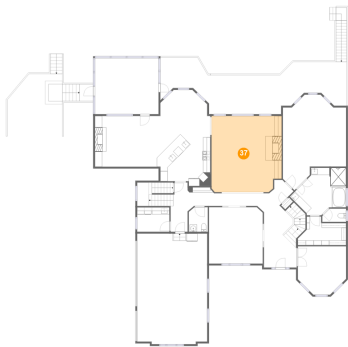
36 Floor 2 - Family Room



Max Dimensions: 17'3" x 14'1"
Calculated Area: 243 sq. ft
Included: Yes

Heated: Yes
Finished: Yes
Enclosed: Yes
Contiguous: Yes
Permitted: Yes
Wet space: No
Addition: No
Conversion: No

37 Floor 2 - Living Room



Max Dimensions: 19'6" x 21'2"
Calculated Area: 403 sq. ft
Included: Yes

Heated: Yes
Finished: Yes
Enclosed: Yes
Contiguous: Yes
Permitted: Yes
Wet space: No
Addition: No
Conversion: No

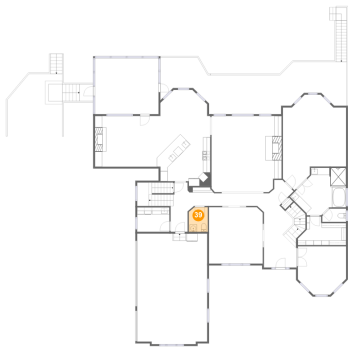
38 Floor 2 - Laundry



Max Dimensions: 9'0" x 6'10"
Calculated Area: 61 sq. ft
Included: Yes

Heated: Yes
Finished: Yes
Enclosed: Yes
Contiguous: Yes
Permitted: Yes
Wet space: No
Addition: No
Conversion: No

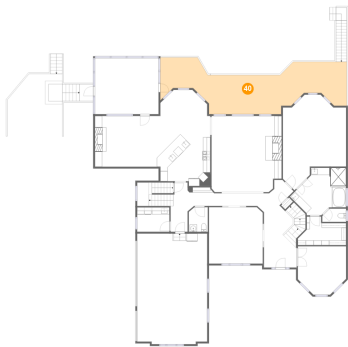
39 Floor 2 - WC



Max Dimensions: 5'3" x 6'10"
Calculated Area: 35 sq. ft
Included: Yes

Heated: Yes
Finished: Yes
Enclosed: Yes
Contiguous: Yes
Permitted: Yes
Wet space: Yes
Addition: No
Conversion: No

40 Floor 2 - Deck



Max Dimensions: 51'10" x 12'2"
Calculated Area: 526 sq. ft
Included: No

Heated: No
Finished: Yes
Enclosed: No
Contiguous: Yes
Permitted: Yes
Wet space: No
Addition: No
Conversion: No

41 Floor 3 - Bath



Max Dimensions: 6'1" x 5'4"
Calculated Area: 32 sq. ft
Included: Yes

Heated: Yes
Finished: Yes
Enclosed: Yes
Contiguous: Yes
Permitted: Yes
Wet space: Yes
Addition: No
Conversion: No

42 Floor 3 - Open To Below



Max Dimensions: 19'5" x 19'5"
Calculated Area: 374 sq. ft
Included: No

Heated: No
Finished: No
Enclosed: No
Contiguous: Yes
Permitted: No
Wet space: No
Addition: No
Conversion: No

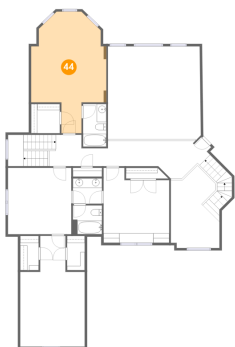
43 Floor 3 - Bath



Max Dimensions: 4'10" x 8'11"
Calculated Area: 43 sq. ft
Included: Yes

Heated: Yes
Finished: Yes
Enclosed: Yes
Contiguous: Yes
Permitted: Yes
Wet space: Yes
Addition: No
Conversion: No

44 Floor 3 - Bedroom



Max Dimensions: 15'8" x 25'5"
Calculated Area: 290 sq. ft
Included: Yes

Heated: Yes
Finished: Yes
Enclosed: Yes
Contiguous: Yes
Permitted: Yes
Wet space: No
Addition: No
Conversion: No

45 Floor 3 - Sitting Room



Max Dimensions: 13'3" x 13'10"
Calculated Area: 183 sq. ft
Included: Yes

Heated: Yes
Finished: Yes
Enclosed: Yes
Contiguous: Yes
Permitted: Yes
Wet space: No
Addition: No
Conversion: No

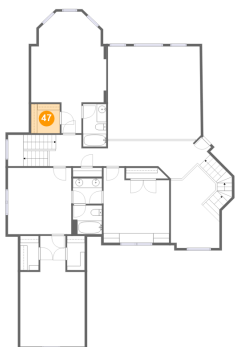
46 Floor 3 - Hall



Max Dimensions: 33'6" x 7'10"
Calculated Area: 300 sq. ft
Included: Yes

Heated: Yes
Finished: Yes
Enclosed: Yes
Contiguous: Yes
Permitted: Yes
Wet space: No
Addition: No
Conversion: No

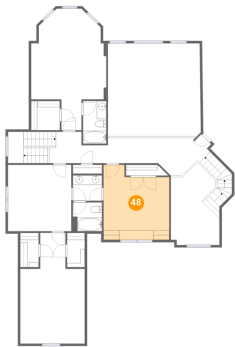
47 Floor 3 - W.I.C.



Max Dimensions: 6'0" x 6'1"
Calculated Area: 37 sq. ft
Included: Yes

Heated: Yes
Finished: Yes
Enclosed: Yes
Contiguous: Yes
Permitted: Yes
Wet space: No
Addition: No
Conversion: No

48 Floor 3 - Bedroom



Max Dimensions: 13'8" x 15'8"
Calculated Area: 191 sq. ft
Included: Yes

Heated: Yes
Finished: Yes
Enclosed: Yes
Contiguous: Yes
Permitted: Yes
Wet space: No
Addition: No
Conversion: No

49 Floor 3 - Bedroom



Max Dimensions: 13'6" x 23'1"
Calculated Area: 250 sq. ft
Included: Yes

Heated: Yes
Finished: Yes
Enclosed: Yes
Contiguous: Yes
Permitted: Yes
Wet space: No
Addition: No
Conversion: No

50 Floor 3 - W.I.C.



Max Dimensions: 3'10" x 7'2"
Calculated Area: 28 sq. ft
Included: Yes

Heated: Yes
Finished: Yes
Enclosed: Yes
Contiguous: Yes
Permitted: Yes
Wet space: No
Addition: No
Conversion: No

51 Floor 3 - Bath



Max Dimensions: 6'1" x 6'0"
Calculated Area: 37 sq. ft
Included: Yes

Heated: Yes
Finished: Yes
Enclosed: Yes
Contiguous: Yes
Permitted: Yes
Wet space: Yes
Addition: No
Conversion: No

52 Floor 3 - Open To Below



Max Dimensions: 10'2" x 17'3"
Calculated Area: 137 sq. ft
Included: No

Heated: No
Finished: No
Enclosed: No
Contiguous: Yes
Permitted: No
Wet space: No
Addition: No
Conversion: No

53 Floor 3 - W.I.C.



Max Dimensions: 3'8" x 7'2"
Calculated Area: 26 sq. ft
Included: Yes

Heated: Yes
Finished: Yes
Enclosed: Yes
Contiguous: Yes
Permitted: Yes
Wet space: No
Addition: No
Conversion: No