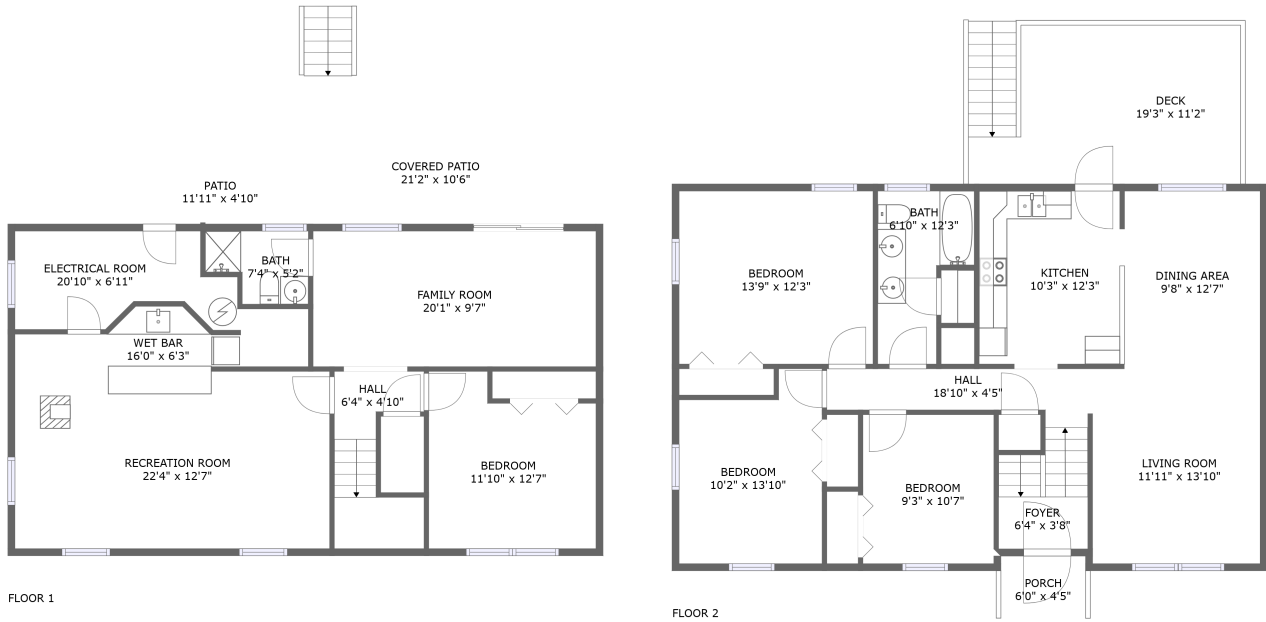



2722 Tanglewood Drive, Meadowlark, Cave Spring, Roanoke, Roanoke County, Virginia, United States,



Property summary

 **0** Garages

 **4** Bedrooms

 **2** Bathrooms

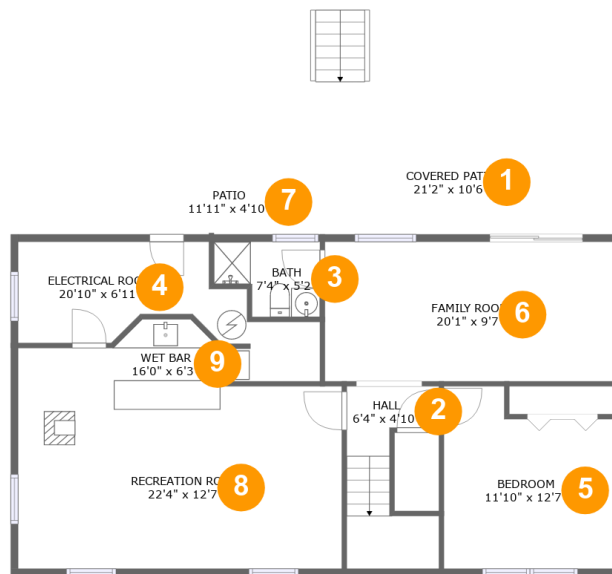
 **0** Half baths

 **2** Floors

 **2,021** Gross living area sqft

 **2,636** Total sqft

2722 Tanglewood Drive, Meadowlark, Cave Spring, Roanoke, Roanoke County, Virginia, United States,



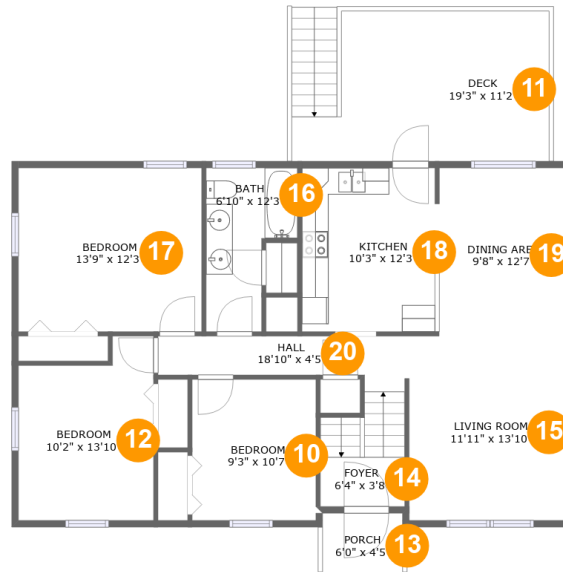
Room dimensions

Floor 1

Total sqft: 1272 Living area: 871

#		Dimensions	sqft	Counted as living area
1	Outdoor	21'2" x 10'6"	222 sq. ft	No
2	Hall	6'4" x 4'10"	59 sq. ft	Yes
3	Bath	7'4" x 5'2"	32 sq. ft	Yes
4	Room	20'10" x 6'11"	110 sq. ft	No
5	Bedroom	11'10" x 12'7"	132 sq. ft	Yes
6	Living Room	20'1" x 9'7"	193 sq. ft	Yes
7	Outdoor	11'11" x 4'10"	58 sq. ft	No
8	Recreation Room	22'4" x 12'7"	257 sq. ft	Yes
9	Bar	16'0" x 6'3"	75 sq. ft	Yes

2722 Tanglewood Drive, Meadowlark, Cave Spring, Roanoke, Roanoke County, Virginia, United States,



Room dimensions

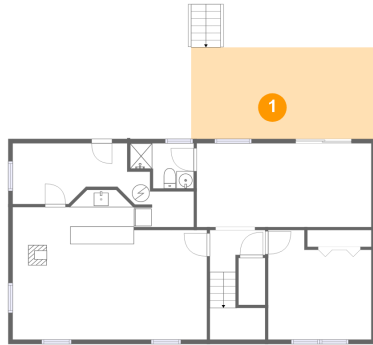
Floor 2

Total sqft: 1364 Living area: 1150

#		Dimensions	sqft	Counted as living area
10	Bedroom	9'3" x 10'7"	98 sq. ft	Yes
11	Outdoor	19'3" x 11'2"	188 sq. ft	No
12	Bedroom	10'2" x 13'10"	124 sq. ft	Yes
13	Outdoor	6'0" x 4'5"	26 sq. ft	No
14	Entry	6'4" x 3'8"	47 sq. ft	Yes
15	Living Room	11'11" x 13'10"	164 sq. ft	Yes
16	Bath	6'10" x 12'3"	65 sq. ft	Yes
17	Bedroom	13'9" x 12'3"	169 sq. ft	Yes
18	Kitchen	10'3" x 12'3"	125 sq. ft	Yes
19	Dining Room	9'8" x 12'7"	121 sq. ft	Yes
20	Hall	18'10" x 4'5"	60 sq. ft	Yes

2722 Tanglewood Drive, Meadowlark, Cave Spring, Roanoke, Roanoke County, Virginia, United States,

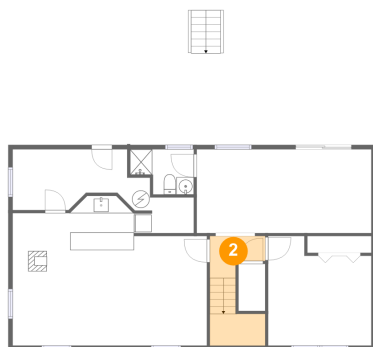
1 Floor 1 - Outdoor



Dimensions: 21'2" x 10'6"
Area: 222 sq. ft
Counted as living area: No

Heated: No
Finished: Yes
Enclosed: No
Contiguous: Yes
Permitted: Yes
Wet space: No
Addition: No
Conversion: No

2 Floor 1 - Hall

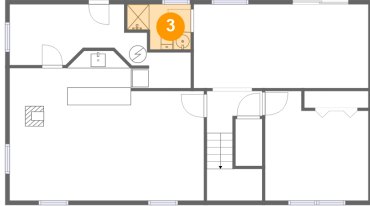


Dimensions: 6'4" x 4'10"
Area: 59 sq. ft
Counted as living area: Yes

Heated: Yes
Finished: Yes
Enclosed: Yes
Contiguous: Yes
Permitted: Yes
Wet space: No
Addition: No
Conversion: No

**2722 Tanglewood Drive, Meadowlark, Cave Spring,
Roanoke, Roanoke County, Virginia, United States,**

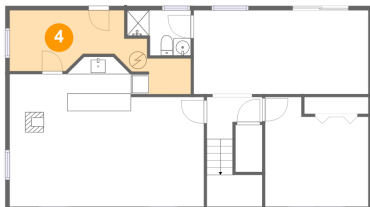
3 Floor 1 - Bath



Dimensions: 7'4" x 5'2"
Area: 32 sq. ft
Counted as living area: Yes

Heated: Yes
Finished: Yes
Enclosed: Yes
Contiguous: Yes
Permitted: Yes
Wet space: Yes
Addition: No
Conversion: No

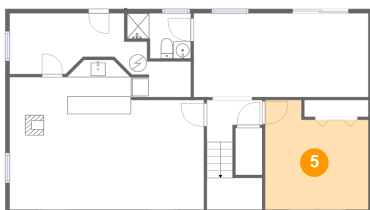
4 Floor 1 - Room



Dimensions: 20'10" x 6'11"
Area: 110 sq. ft
Counted as living area: No

Heated: No
Finished: No
Enclosed: Yes
Contiguous: Yes
Permitted: Yes
Wet space: No
Addition: No
Conversion: No

5 Floor 1 - Bedroom

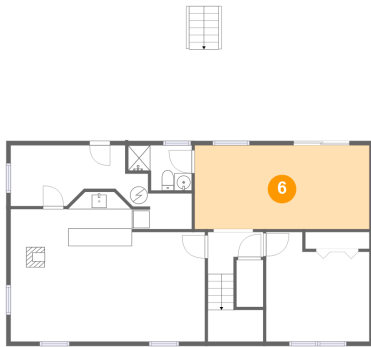


Dimensions: 11'10" x 12'7"
Area: 132 sq. ft
Counted as living area: Yes

Heated: Yes
Finished: Yes
Enclosed: Yes
Contiguous: Yes
Permitted: Yes
Wet space: No
Addition: No
Conversion: No

2722 Tanglewood Drive, Meadowlark, Cave Spring,
Roanoke, Roanoke County, Virginia, United States,

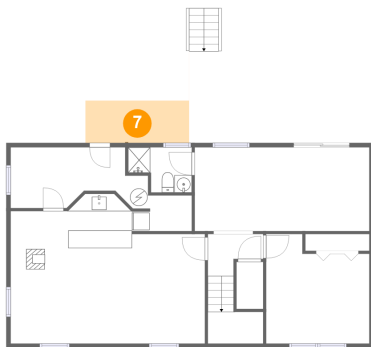
6 Floor 1 - Living Room



Dimensions: 20'1" x 9'7"
Area: 193 sq. ft
Counted as living area: Yes

Heated: Yes
Finished: Yes
Enclosed: Yes
Contiguous: Yes
Permitted: Yes
Wet space: No
Addition: No
Conversion: No

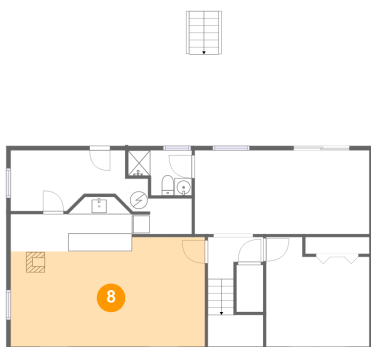
7 Floor 1 - Outdoor



Dimensions: 11'11" x 4'10"
Area: 58 sq. ft
Counted as living area: No

Heated: No
Finished: Yes
Enclosed: No
Contiguous: Yes
Permitted: Yes
Wet space: No
Addition: No
Conversion: No

8 Floor 1 - Recreation Room

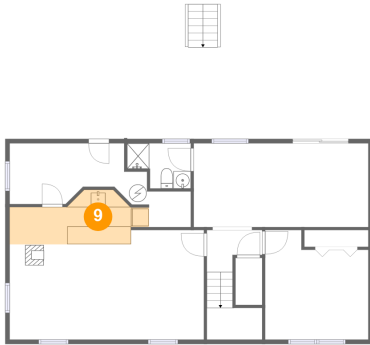


Dimensions: 22'4" x 12'7"
Area: 257 sq. ft
Counted as living area: Yes

Heated: Yes
Finished: Yes
Enclosed: Yes
Contiguous: Yes
Permitted: Yes
Wet space: No
Addition: No
Conversion: No

2722 Tanglewood Drive, Meadowlark, Cave Spring, Roanoke, Roanoke County, Virginia, United States,

9 Floor 1 - Bar



Dimensions: 16'0" x 6'3"
Area: 75 sq. ft
Counted as living area: Yes

Heated: Yes
Finished: Yes
Enclosed: Yes
Contiguous: Yes
Permitted: Yes
Wet space: No
Addition: No
Conversion: No

10 Floor 2 - Bedroom



Dimensions: 9'3" x 10'7"
Area: 98 sq. ft
Counted as living area: Yes

Heated: Yes
Finished: Yes
Enclosed: Yes
Contiguous: Yes
Permitted: Yes
Wet space: No
Addition: No
Conversion: No

11 Floor 2 - Outdoor

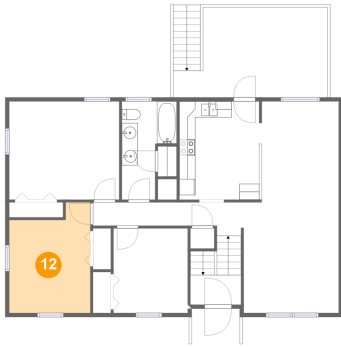


Dimensions: 19'3" x 11'2"
Area: 188 sq. ft
Counted as living area: No

Heated: No
Finished: Yes
Enclosed: No
Contiguous: Yes
Permitted: Yes
Wet space: No
Addition: No
Conversion: No

**2722 Tanglewood Drive, Meadowlark, Cave Spring,
Roanoke, Roanoke County, Virginia, United States,**

12 Floor 2 - Bedroom



Dimensions: 10'2" x 13'10"
Area: 124 sq. ft
Counted as living area: Yes

Heated: Yes
Finished: Yes
Enclosed: Yes
Contiguous: Yes
Permitted: Yes
Wet space: No
Addition: No
Conversion: No

13 Floor 2 - Outdoor



Dimensions: 6'0" x 4'5"
Area: 26 sq. ft
Counted as living area: No

Heated: No
Finished: Yes
Enclosed: No
Contiguous: Yes
Permitted: Yes
Wet space: No
Addition: No
Conversion: No

14 Floor 2 - Entry

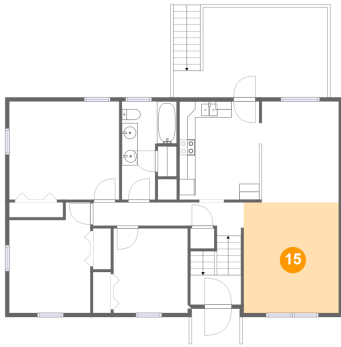


Dimensions: 6'4" x 3'8"
Area: 47 sq. ft
Counted as living area: Yes

Heated: Yes
Finished: Yes
Enclosed: Yes
Contiguous: Yes
Permitted: Yes
Wet space: No
Addition: No
Conversion: No

**2722 Tanglewood Drive, Meadowlark, Cave Spring,
Roanoke, Roanoke County, Virginia, United States,**

15 Floor 2 - Living Room



Dimensions: 11'11" x 13'10"
Area: 164 sq. ft
Counted as living area: Yes

Heated: Yes
Finished: Yes
Enclosed: Yes
Contiguous: Yes
Permitted: Yes
Wet space: No
Addition: No
Conversion: No

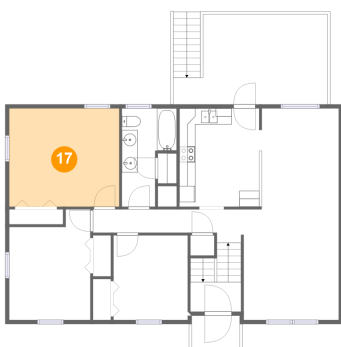
16 Floor 2 - Bath



Dimensions: 6'10" x 12'3"
Area: 65 sq. ft
Counted as living area: Yes

Heated: Yes
Finished: Yes
Enclosed: Yes
Contiguous: Yes
Permitted: Yes
Wet space: Yes
Addition: No
Conversion: No

17 Floor 2 - Bedroom

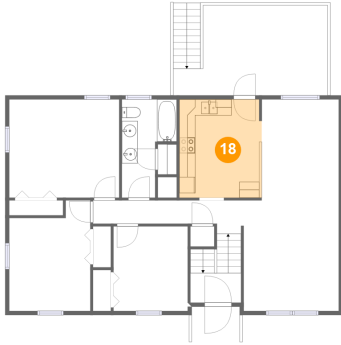


Dimensions: 13'9" x 12'3"
Area: 169 sq. ft
Counted as living area: Yes

Heated: Yes
Finished: Yes
Enclosed: Yes
Contiguous: Yes
Permitted: Yes
Wet space: No
Addition: No
Conversion: No

2722 Tanglewood Drive, Meadowlark, Cave Spring,
Roanoke, Roanoke County, Virginia, United States,

18 Floor 2 - Kitchen



Dimensions: 10'3" x 12'3"
Area: 125 sq. ft
Counted as living area: Yes

Heated: Yes
Finished: Yes
Enclosed: Yes
Contiguous: Yes
Permitted: Yes
Wet space: No
Addition: No
Conversion: No

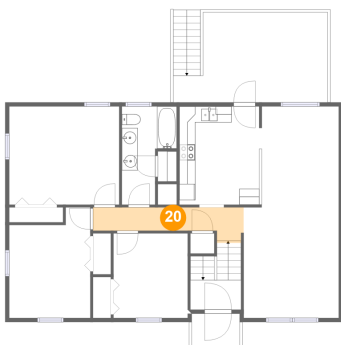
19 Floor 2 - Dining Room



Dimensions: 9'8" x 12'7"
Area: 121 sq. ft
Counted as living area: Yes

Heated: Yes
Finished: Yes
Enclosed: Yes
Contiguous: Yes
Permitted: Yes
Wet space: No
Addition: No
Conversion: No

20 Floor 2 - Hall



Dimensions: 18'10" x 4'5"
Area: 60 sq. ft
Counted as living area: Yes

Heated: Yes
Finished: Yes
Enclosed: Yes
Contiguous: Yes
Permitted: Yes
Wet space: No
Addition: No
Conversion: No