


Home report

105 Cornell Road, Rocky Mount, Franklin County, Virginia,
United States, 24151





Property summary


 **1** Garages


 **4** Bedrooms

 **2** Bathrooms

 **1** Half baths

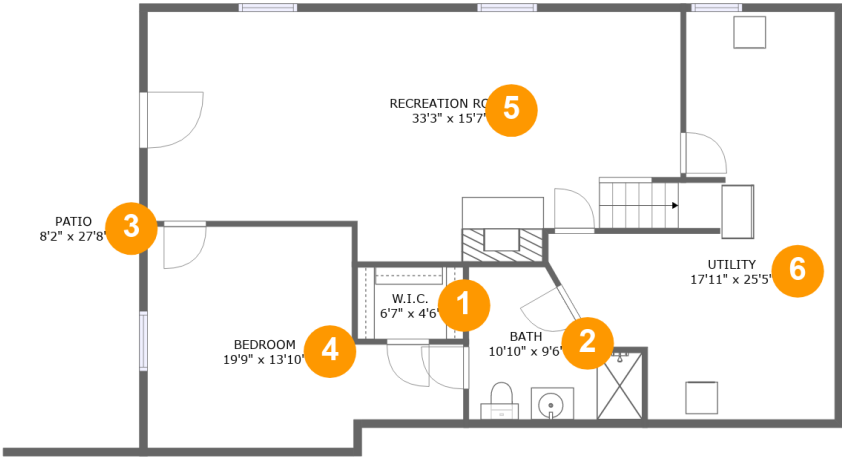
 **2** Floors

 **2,413** Gross living area sqft

 **4,096** Total sqft

Home report

105 Cornell Road, Rocky Mount, Franklin County, Virginia,
United States, 24151



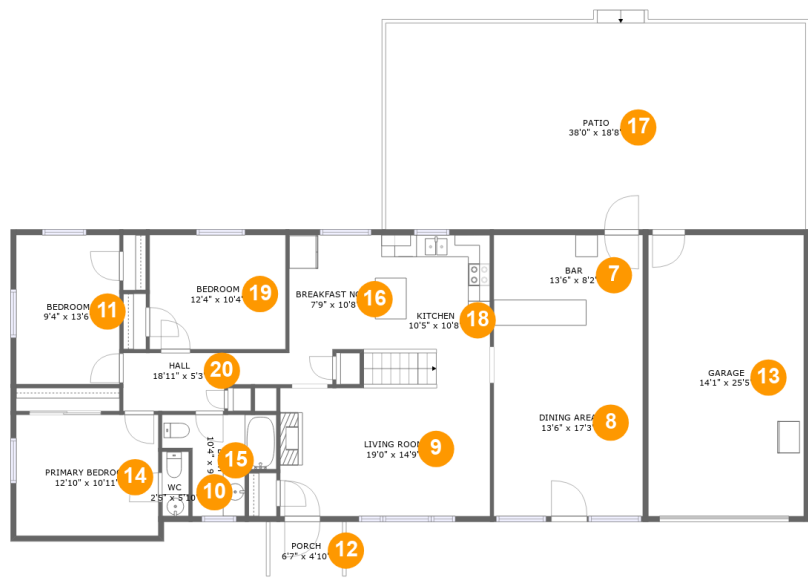
Room dimensions

Floor 1 Total sqft: 1416 Living area: 864

#		Dimensions	sqft	Counted as living area
1	W.I.C.	6'7" x 4'6"	30 sq. ft	Yes
2	Bath	10'10" x 9'6"	79 sq. ft	Yes
3	Patio	8'2" x 27'8"	227 sq. ft	No
4	Bedroom	19'9" x 13'10"	209 sq. ft	Yes
5	Recreation Room	33'3" x 15'7"	466 sq. ft	Yes
6	Utility	17'11" x 25'5"	299 sq. ft	No

Home report

105 Cornell Road, Rocky Mount, Franklin County, Virginia,
United States, 24151



Room dimensions

Floor 2 Total sqft: 2680 Living area: 1549

#		Dimensions	sqft	Counted as living area
7	Bar	13'6" x 8'2"	110 sq. ft	Yes
8	Dining Area	13'6" x 17'3"	233 sq. ft	Yes
9	Living Room	19'0" x 14'9"	256 sq. ft	Yes
10	WC	2'5" x 5'10"	14 sq. ft	Yes
11	Bedroom	9'4" x 13'6"	126 sq. ft	Yes
12	Porch	6'7" x 4'10"	32 sq. ft	No
13	Garage	14'1" x 25'5"	358 sq. ft	No
14	Primary Bedroom	12'10" x 10'11"	141 sq. ft	Yes
15	Bath	10'4" x 9'2"	66 sq. ft	Yes
16	Breakfast Nook	7'9" x 10'8"	82 sq. ft	Yes
17	Patio	38'0" x 18'8"	714 sq. ft	No

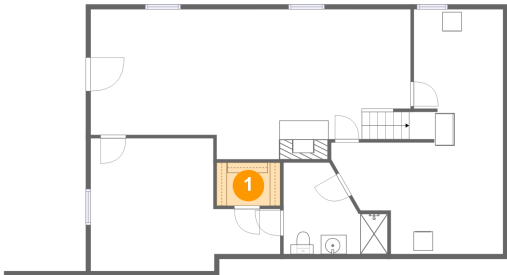
Home report

105 Cornell Road, Rocky Mount, Franklin County, Virginia,
United States, 24151

#		Dimensions	sqft	Counted as living area
18	Kitchen	10'5" x 10'8"	111 sq. ft	Yes
19	Bedroom	12'4" x 10'4"	127 sq. ft	Yes
20	Hall	18'11" x 5'3"	76 sq. ft	Yes

105 Cornell Road, Rocky Mount, Franklin County, Virginia,
United States, 24151

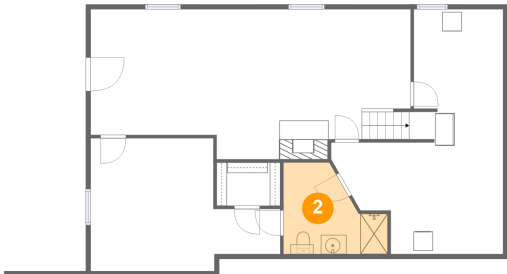
1 Floor 1 - W.I.C.



Dimensions: 6'7" x 4'6"
Area: 30 sq. ft
Counted as living area: Yes

Heated: Yes
Finished: Yes
Enclosed: Yes
Contiguous: Yes
Permitted: Yes
Wet space: No
Addition: No
Conversion: No

2 Floor 1 - Bath

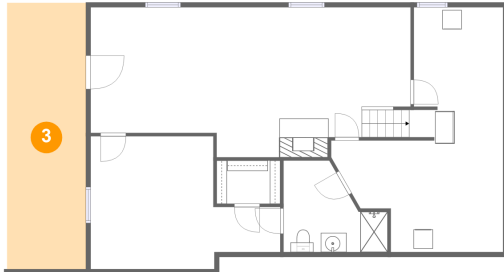


Dimensions: 10'10" x 9'6"
Area: 79 sq. ft
Counted as living area: Yes

Heated: Yes
Finished: Yes
Enclosed: Yes
Contiguous: Yes
Permitted: Yes
Wet space: Yes
Addition: No
Conversion: No

105 Cornell Road, Rocky Mount, Franklin County, Virginia,
United States, 24151

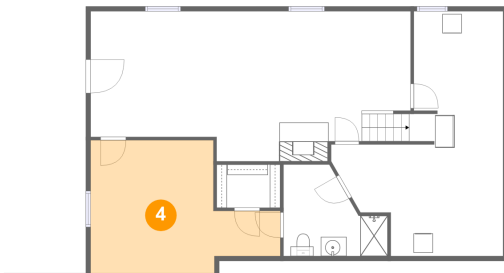
3 Floor 1 - Patio



Dimensions: 8'2" x 27'8"
Area: 227 sq. ft
Counted as living area: No

Heated: No
Finished: Yes
Enclosed: No
Contiguous: Yes
Permitted: Yes
Wet space: No
Addition: No
Conversion: No

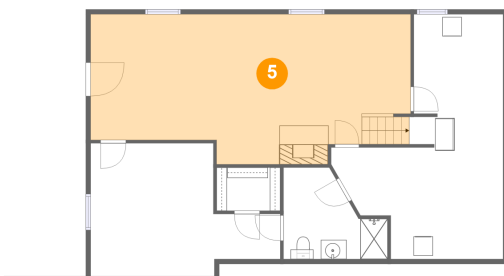
4 Floor 1 - Bedroom



Dimensions: 19'9" x 13'10"
Area: 209 sq. ft
Counted as living area: Yes

Heated: Yes
Finished: Yes
Enclosed: Yes
Contiguous: Yes
Permitted: Yes
Wet space: No
Addition: No
Conversion: No

5 Floor 1 - Recreation Room



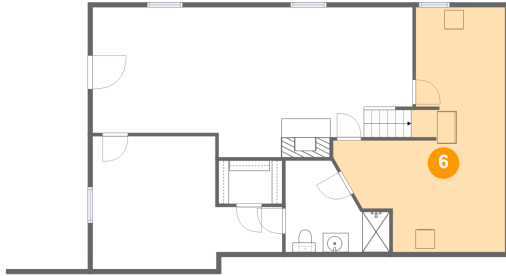
Dimensions: 33'3" x 15'7"
Area: 466 sq. ft
Counted as living area: Yes

Heated: Yes
Finished: Yes
Enclosed: Yes
Contiguous: Yes
Permitted: Yes
Wet space: No
Addition: No
Conversion: No

Home report

105 Cornell Road, Rocky Mount, Franklin County, Virginia,
United States, 24151

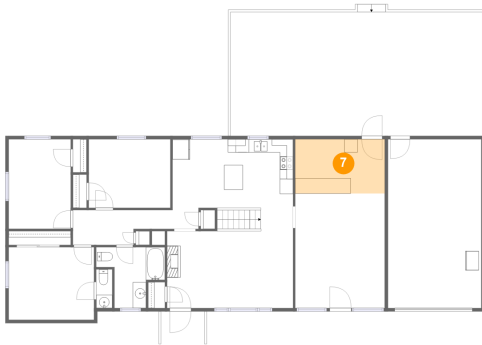
6 Floor 1 - Utility



Dimensions: 17'11" x 25'5"
Area: 299 sq. ft
Counted as living area: No

Heated: Yes
Finished: No
Enclosed: Yes
Contiguous: Yes
Permitted: Yes
Wet space: No
Addition: No
Conversion: No

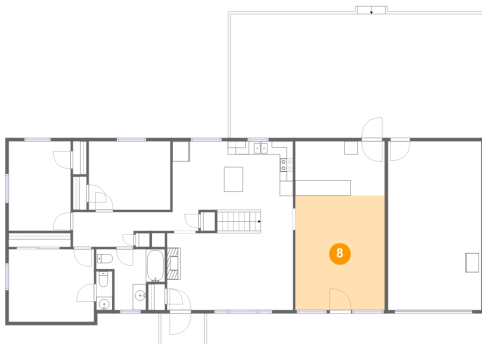
7 Floor 2 - Bar



Dimensions: 13'6" x 8'2"
Area: 110 sq. ft
Counted as living area: Yes

Heated: Yes
Finished: Yes
Enclosed: Yes
Contiguous: Yes
Permitted: Yes
Wet space: No
Addition: No
Conversion: No

8 Floor 2 - Dining Area

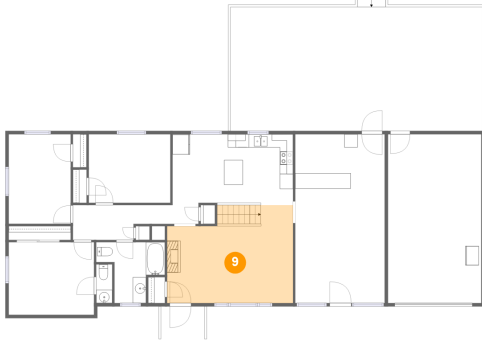


Dimensions: 13'6" x 17'3"
Area: 233 sq. ft
Counted as living area: Yes

Heated: Yes
Finished: Yes
Enclosed: Yes
Contiguous: Yes
Permitted: Yes
Wet space: No
Addition: No
Conversion: No

105 Cornell Road, Rocky Mount, Franklin County, Virginia,
United States, 24151

9 Floor 2 - Living Room



Dimensions: 19'0" x 14'9"
Area: 256 sq. ft
Counted as living area: Yes

Heated: Yes
Finished: Yes
Enclosed: Yes
Contiguous: Yes
Permitted: Yes
Wet space: No
Addition: No
Conversion: No

10 Floor 2 - WC



Dimensions: 2'5" x 5'10"
Area: 14 sq. ft
Counted as living area: Yes

Heated: Yes
Finished: Yes
Enclosed: Yes
Contiguous: Yes
Permitted: Yes
Wet space: Yes
Addition: No
Conversion: No

11 Floor 2 - Bedroom



Dimensions: 9'4" x 13'6"
Area: 126 sq. ft
Counted as living area: Yes

Heated: Yes
Finished: Yes
Enclosed: Yes
Contiguous: Yes
Permitted: Yes
Wet space: No
Addition: No
Conversion: No

105 Cornell Road, Rocky Mount, Franklin County, Virginia,
United States, 24151

12 Floor 2 - Porch



Dimensions: 6'7" x 4'10"
Area: 32 sq. ft
Counted as living area: No

Heated: No
Finished: Yes
Enclosed: No
Contiguous: Yes
Permitted: Yes
Wet space: No
Addition: No
Conversion: No

13 Floor 2 - Garage



Dimensions: 14'1" x 25'5"
Area: 358 sq. ft
Counted as living area: No

Heated: No
Finished: No
Enclosed: Yes
Contiguous: Yes
Permitted: Yes
Wet space: No
Addition: No
Conversion: No

14 Floor 2 - Primary Bedroom



Dimensions: 12'10" x 10'11"
Area: 141 sq. ft
Counted as living area: Yes

Heated: Yes
Finished: Yes
Enclosed: Yes
Contiguous: Yes
Permitted: Yes
Wet space: No
Addition: No
Conversion: No

105 Cornell Road, Rocky Mount, Franklin County, Virginia,
United States, 24151

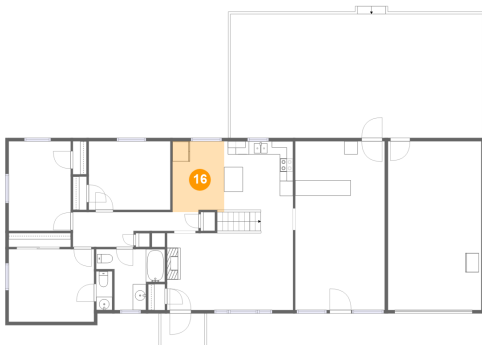
15 Floor 2 - Bath



Dimensions: 10'4" x 9'2"
Area: 66 sq. ft
Counted as living area: Yes

Heated: Yes
Finished: Yes
Enclosed: Yes
Contiguous: Yes
Permitted: Yes
Wet space: Yes
Addition: No
Conversion: No

16 Floor 2 - Breakfast Nook



Dimensions: 7'9" x 10'8"
Area: 82 sq. ft
Counted as living area: Yes

Heated: Yes
Finished: Yes
Enclosed: Yes
Contiguous: Yes
Permitted: Yes
Wet space: No
Addition: No
Conversion: No

17 Floor 2 - Patio



Dimensions: 38'0" x 18'8"
Area: 714 sq. ft
Counted as living area: No

Heated: No
Finished: Yes
Enclosed: No
Contiguous: Yes
Permitted: Yes
Wet space: No
Addition: No
Conversion: No

105 Cornell Road, Rocky Mount, Franklin County, Virginia,
United States, 24151

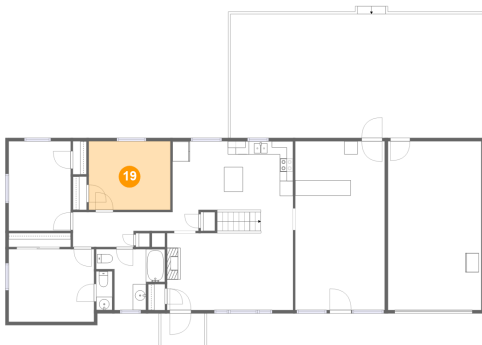
18 Floor 2 - Kitchen



Dimensions: 10'5" x 10'8"
Area: 111 sq. ft
Counted as living area: Yes

Heated: Yes
Finished: Yes
Enclosed: Yes
Contiguous: Yes
Permitted: Yes
Wet space: No
Addition: No
Conversion: No

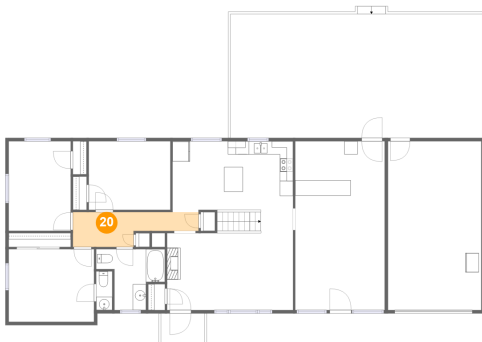
19 Floor 2 - Bedroom



Dimensions: 12'4" x 10'4"
Area: 127 sq. ft
Counted as living area: Yes

Heated: Yes
Finished: Yes
Enclosed: Yes
Contiguous: Yes
Permitted: Yes
Wet space: No
Addition: No
Conversion: No

20 Floor 2 - Hall



Dimensions: 18'11" x 5'3"
Area: 76 sq. ft
Counted as living area: Yes

Heated: Yes
Finished: Yes
Enclosed: Yes
Contiguous: Yes
Permitted: Yes
Wet space: No
Addition: No
Conversion: No