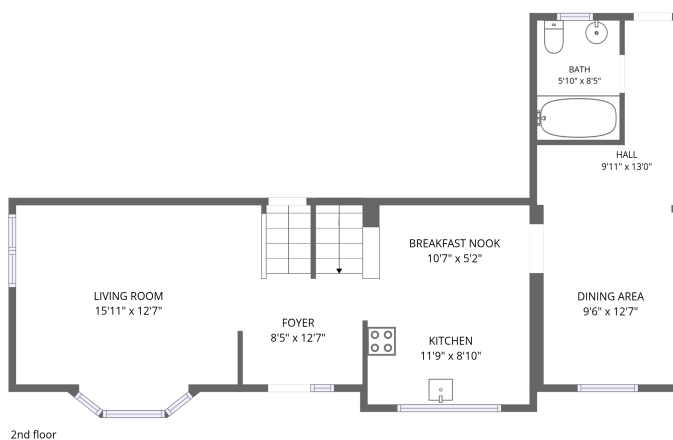
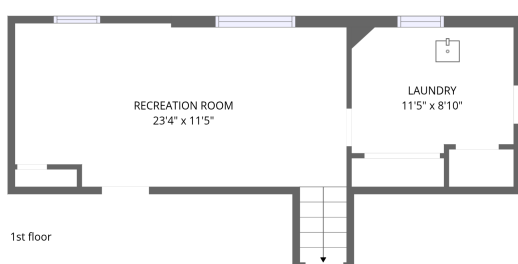
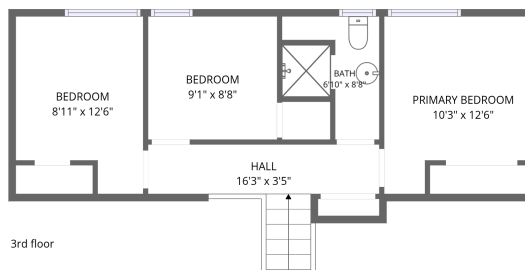


Home data report

2613 Liruma Road, Sheridan, Sheridan Homelands,
Mississauga, Peel County, Ontario, Canada, L5K 1Y8



Total Area: 1779 sq. ft

1st Floor: 450 sq. ft, 2nd Floor: 807 sq. ft, 3rd Floor: 522 sq. ft

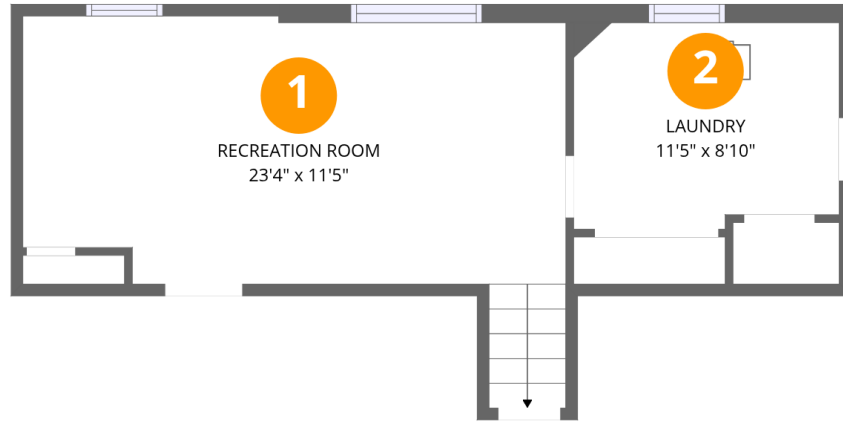
Excluded: Undefined 24 sq. ft, Embedded window 13 sq. ft

Property summary



Home data report

2613 Liruma Road, Sheridan, Sheridan Homelands,
Mississauga, Peel County, Ontario, Canada, L5K 1Y8



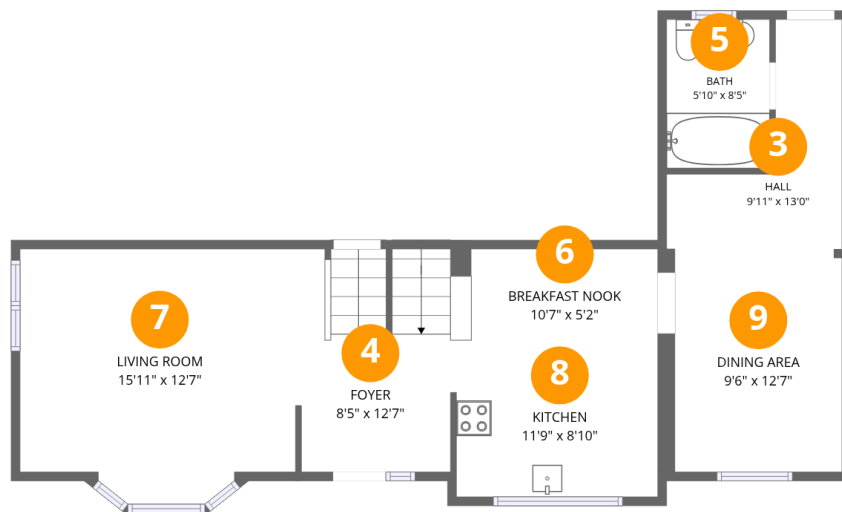
Room dimensions

Floor 1

Total:450sqft Excluded: 24sqft

#		Dimensions	sqft	Counted as living area
1	Recreation Room	23'4" x 11'5"	275 sq. ft	Yes
2	Laundry	11'5" x 8'10"	98 sq. ft	Yes

2613 Liruma Road, Sheridan, Sheridan Homelands,
Mississauga, Peel County, Ontario, Canada, L5K 1Y8



Room dimensions

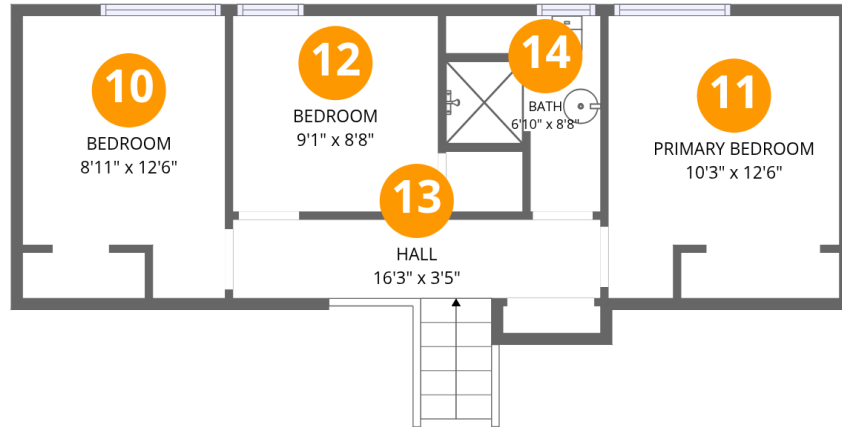
Floor 2

Total:807sqft Excluded: 13sqft

#		Dimensions	sqft	Counted as living area
3	Hall	9'11" x 13'0"	75 sq. ft	Yes
4	Foyer	8'5" x 12'7"	105 sq. ft	Yes
5	Bath	5'10" x 8'5"	49 sq. ft	Yes
6	Breakfast Nook	10'7" x 5'2"	61 sq. ft	Yes
7	Living Room	15'11" x 12'7"	200 sq. ft	Yes
8	Kitchen	11'9" x 8'10"	102 sq. ft	Yes
9	Dining Area	9'6" x 12'7"	120 sq. ft	Yes

Home data report

2613 Liruma Road, Sheridan, Sheridan Homelands,
Mississauga, Peel County, Ontario, Canada, L5K 1Y8



Room dimensions

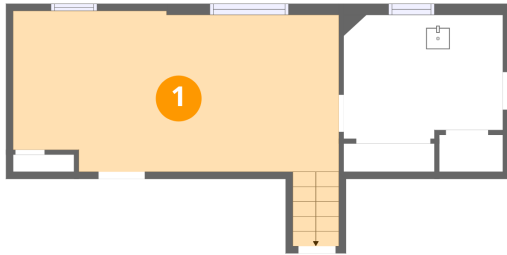
Floor 3

Total:522sqft Excluded: 0sqft

#		Dimensions	sqft	Counted as living area
10	Bedroom	8'11" x 12'6"	98 sq. ft	Yes
11	Primary Bedroom	10'3" x 12'6"	110 sq. ft	Yes
12	Bedroom	9'1" x 8'8"	79 sq. ft	Yes
13	Hall	16'3" x 3'5"	73 sq. ft	Yes
14	Bath	6'10" x 8'8"	46 sq. ft	Yes

2613 Liruma Road, Sheridan, Sheridan Homelands,
Mississauga, Peel County, Ontario, Canada, L5K 1Y8

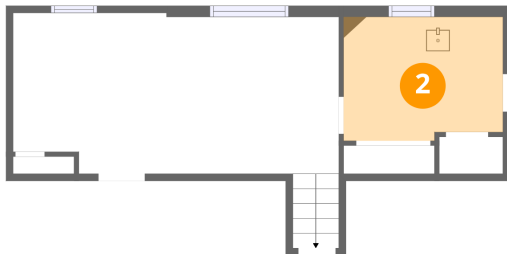
1 Floor 1 - Recreation Room



Dimensions: 23'4" x 11'5"
Area: 275 sq. ft
Counted as living area: Yes

Heated: Yes
Finished: Yes
Enclosed: Yes
Contiguous: Yes
Permitted: Yes
Wet space: No
Addition: No
Conversion: No

2 Floor 1 - Laundry

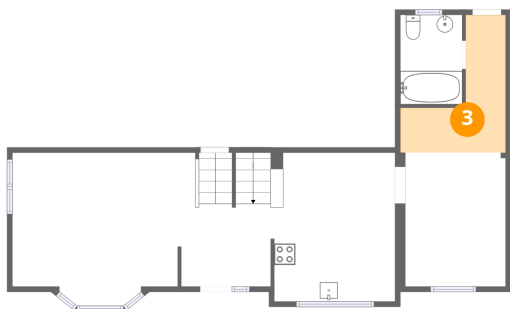


Dimensions: 11'5" x 8'10"
Area: 98 sq. ft
Counted as living area: Yes

Heated: Yes
Finished: Yes
Enclosed: Yes
Contiguous: Yes
Permitted: Yes
Wet space: No
Addition: No
Conversion: No

2613 Liruma Road, Sheridan, Sheridan Homelands,
Mississauga, Peel County, Ontario, Canada, L5K 1Y8

3 Floor 2 - Hall



Dimensions: 9'11" x 13'0"
Area: 75 sq. ft
Counted as living area: Yes

Heated: Yes
Finished: Yes
Enclosed: Yes
Contiguous: Yes
Permitted: Yes
Wet space: No
Addition: No
Conversion: No

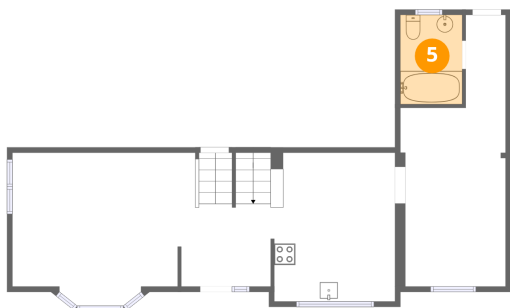
4 Floor 2 - Foyer



Dimensions: 8'5" x 12'7"
Area: 105 sq. ft
Counted as living area: Yes

Heated: Yes
Finished: Yes
Enclosed: Yes
Contiguous: Yes
Permitted: Yes
Wet space: No
Addition: No
Conversion: No

5 Floor 2 - Bath

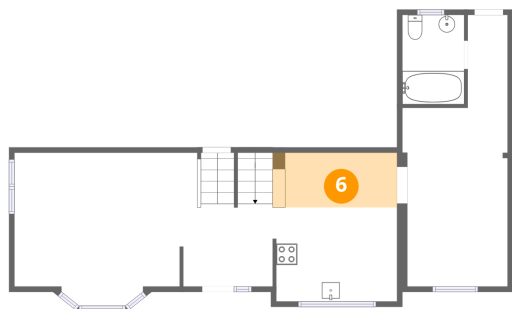


Dimensions: 5'10" x 8'5"
Area: 49 sq. ft
Counted as living area: Yes

Heated: Yes
Finished: Yes
Enclosed: Yes
Contiguous: Yes
Permitted: Yes
Wet space: Yes
Addition: No
Conversion: No

2613 Liruma Road, Sheridan, Sheridan Homelands,
Mississauga, Peel County, Ontario, Canada, L5K 1Y8

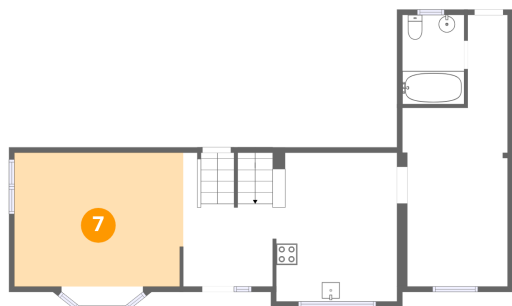
6 Floor 2 - Breakfast Nook



Dimensions: 10'7" x 5'2"
Area: 61 sq. ft
Counted as living area: Yes

Heated: Yes
Finished: Yes
Enclosed: Yes
Contiguous: Yes
Permitted: Yes
Wet space: No
Addition: No
Conversion: No

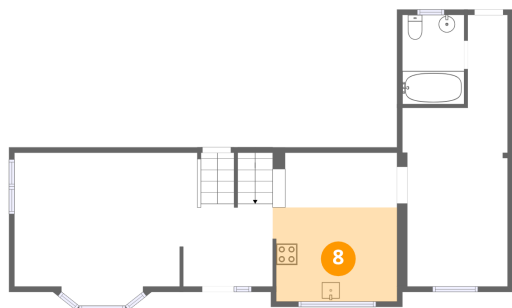
7 Floor 2 - Living Room



Dimensions: 15'11" x 12'7"
Area: 200 sq. ft
Counted as living area: Yes

Heated: Yes
Finished: Yes
Enclosed: Yes
Contiguous: Yes
Permitted: Yes
Wet space: No
Addition: No
Conversion: No

8 Floor 2 - Kitchen

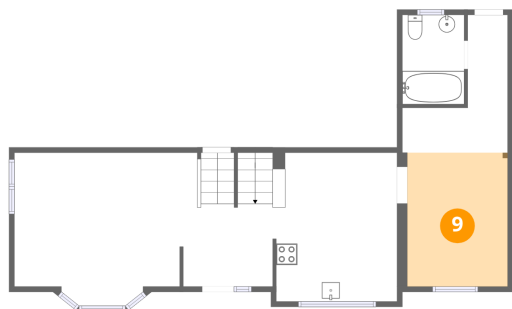


Dimensions: 11'9" x 8'10"
Area: 102 sq. ft
Counted as living area: Yes

Heated: Yes
Finished: Yes
Enclosed: Yes
Contiguous: Yes
Permitted: Yes
Wet space: No
Addition: No
Conversion: No

2613 Liruma Road, Sheridan, Sheridan Homelands,
Mississauga, Peel County, Ontario, Canada, L5K 1Y8

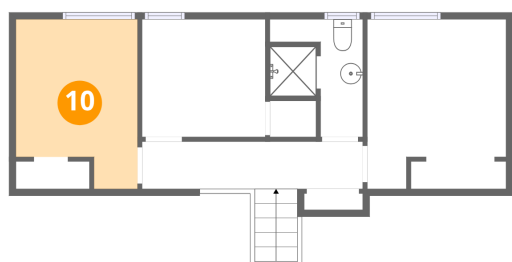
9 Floor 2 - Dining Area



Dimensions: 9'6" x 12'7"
Area: 120 sq. ft
Counted as living area: Yes

Heated: Yes
Finished: Yes
Enclosed: Yes
Contiguous: Yes
Permitted: Yes
Wet space: No
Addition: No
Conversion: No

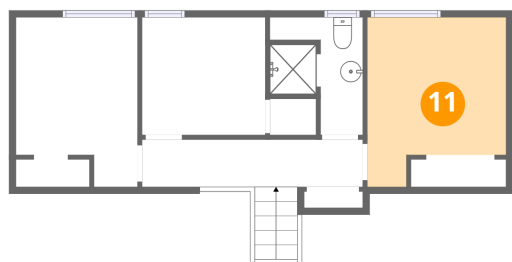
10 Floor 3 - Bedroom



Dimensions: 8'11" x 12'6"
Area: 98 sq. ft
Counted as living area: Yes

Heated: Yes
Finished: Yes
Enclosed: Yes
Contiguous: Yes
Permitted: Yes
Wet space: No
Addition: No
Conversion: No

11 Floor 3 - Primary Bedroom



Dimensions: 10'3" x 12'6"
Area: 110 sq. ft
Counted as living area: Yes

Heated: Yes
Finished: Yes
Enclosed: Yes
Contiguous: Yes
Permitted: Yes
Wet space: No
Addition: No
Conversion: No

2613 Liruma Road, Sheridan, Sheridan Homelands,
Mississauga, Peel County, Ontario, Canada, L5K 1Y8

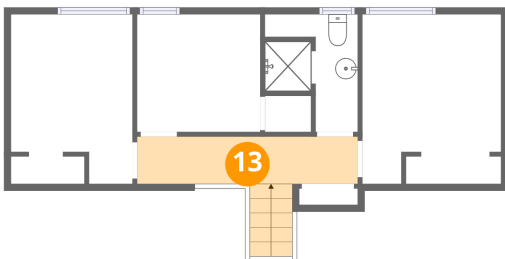
12 Floor 3 - Bedroom



Dimensions: 9'1" x 8'8"
Area: 79 sq. ft
Counted as living area: Yes

Heated: Yes
Finished: Yes
Enclosed: Yes
Contiguous: Yes
Permitted: Yes
Wet space: No
Addition: No
Conversion: No

13 Floor 3 - Hall



Dimensions: 16'3" x 3'5"
Area: 73 sq. ft
Counted as living area: Yes

Heated: Yes
Finished: Yes
Enclosed: Yes
Contiguous: Yes
Permitted: Yes
Wet space: No
Addition: No
Conversion: No

14 Floor 3 - Bath



Dimensions: 6'10" x 8'8"
Area: 46 sq. ft
Counted as living area: Yes

Heated: Yes
Finished: Yes
Enclosed: Yes
Contiguous: Yes
Permitted: Yes
Wet space: Yes
Addition: No
Conversion: No