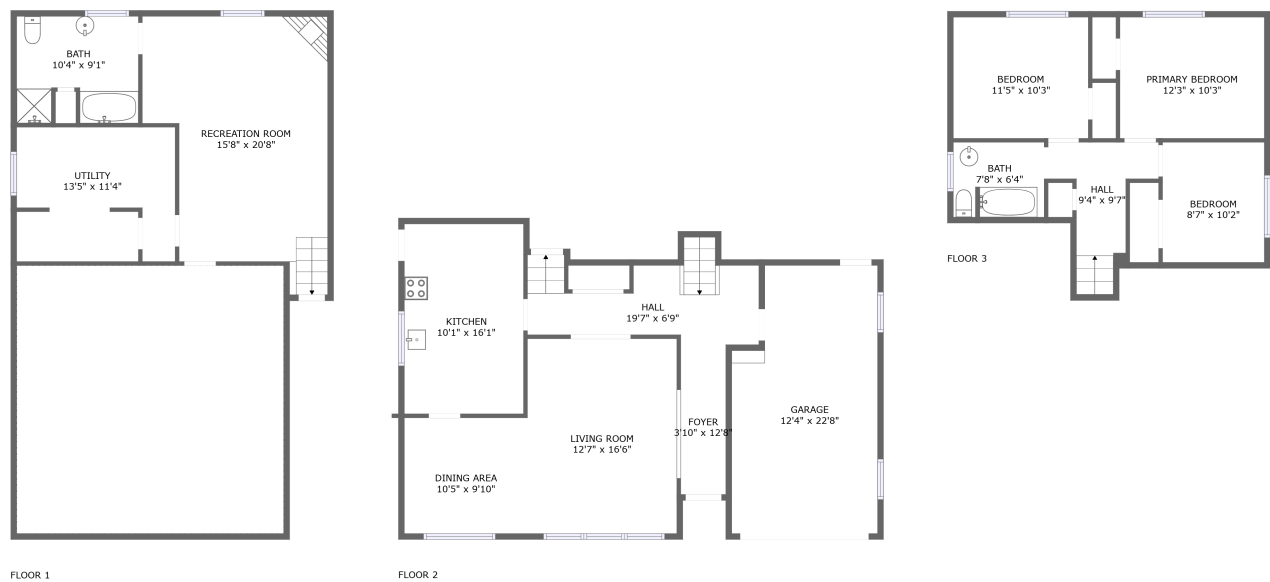


Home report

5305 Riverside Drive, Pinedale, Burlington, Halton County,
Ontario, Canada, L7L 3X7




Total Area: 1896 sq. ft


Below Ground: 603 sq. ft, Floor 2: 727 sq. ft, Floor 3: 566 sq. ft

Excluded: Low Ceiling 546 sq. ft, Garage 285 sq. ft

Property summary

 **3** Floors

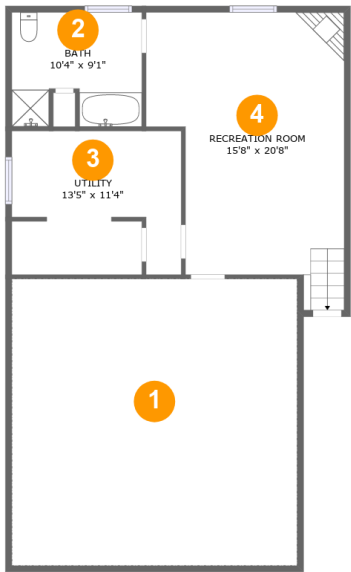
 **3** Bedrooms

 **2** Bathrooms

 **1** Garages

Home report

5305 Riverside Drive, Pinedale, Burlington, Halton County,
Ontario, Canada, L7L 3X7



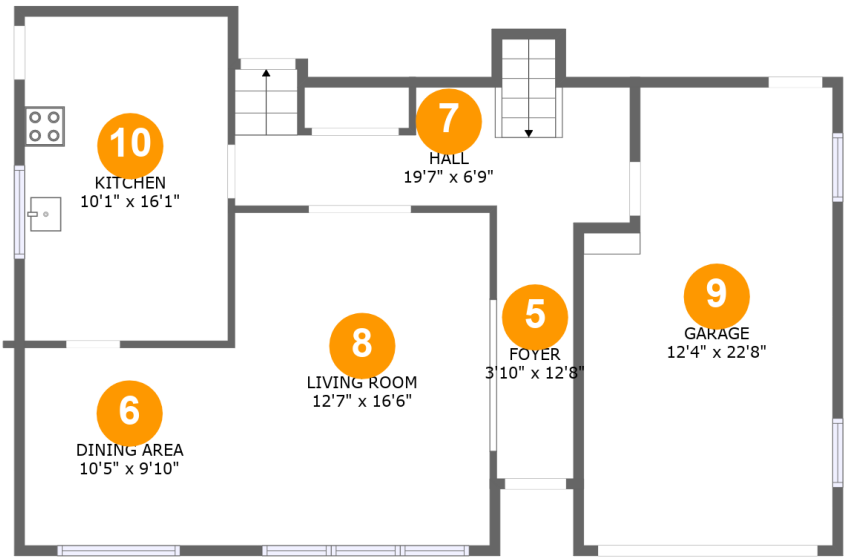
Room dimensions

Floor 1 Below ground Total:603sqft Excluded: 546sqft

#		Max Dimensions	sqft	Included
1	Crawl Space	22'7" x 22'8"	513 sq. ft	No
2	Bath	10'4" x 9'1"	86 sq. ft	Yes
3	Utility	13'5" x 11'4"	149 sq. ft	Yes
4	Recreation Room	15'8" x 20'8"	298 sq. ft	Yes

Home report

5305 Riverside Drive, Pinedale, Burlington, Halton County,
Ontario, Canada, L7L 3X7



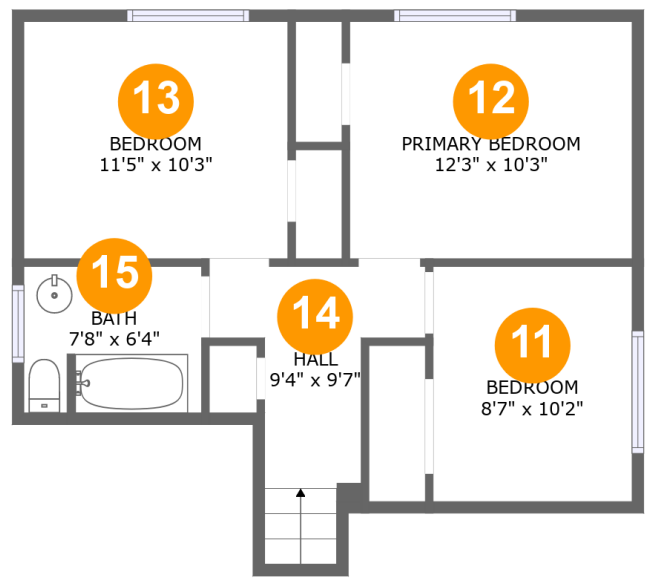
Room dimensions

Floor 2 Total:727sqft Excluded: 285sqft

#		Max Dimensions	sqft	Included
5	Foyer	3'10" x 12'8"	48 sq. ft	Yes
6	Dining Area	10'5" x 9'10"	102 sq. ft	Yes
7	Hall	19'7" x 6'9"	116 sq. ft	Yes
8	Living Room	12'7" x 16'6"	211 sq. ft	Yes
9	Garage	12'4" x 22'8"	260 sq. ft	No
10	Kitchen	10'1" x 16'1"	162 sq. ft	Yes

Home report

5305 Riverside Drive, Pinedale, Burlington, Halton County,
Ontario, Canada, L7L 3X7



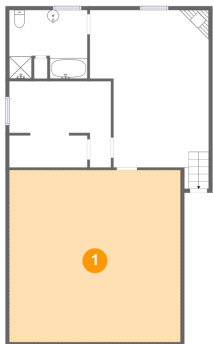
Room dimensions

Floor 3 Total:566sqft Excluded: 0sqft

#		Max Dimensions	sqft	Included
11	Bedroom	8'7" x 10'2"	88 sq. ft	Yes
12	Primary Bedroom	12'3" x 10'3"	125 sq. ft	Yes
13	Bedroom	11'5" x 10'3"	117 sq. ft	Yes
14	Hall	9'4" x 9'7"	67 sq. ft	Yes
15	Bath	7'8" x 6'4"	48 sq. ft	Yes

5305 Riverside Drive, Pinedale, Burlington, Halton County,
Ontario, Canada, L7L 3X7

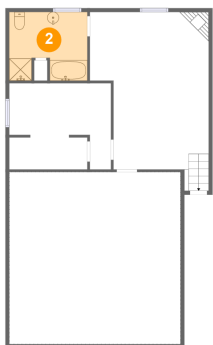
1 Floor 1 - Crawl Space



Max Dimensions: 22'7" x 22'8"
Calculated Area: 513 sq. ft
Included: No

Heated: No
Finished: No
Enclosed: No
Contiguous: Yes
Permitted: No
Wet space: No
Addition: No
Conversion: No

2 Floor 1 - Bath

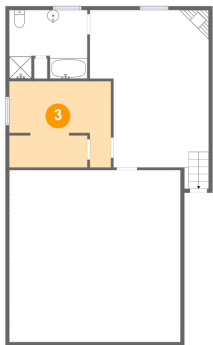


Max Dimensions: 10'4" x 9'1"
Calculated Area: 86 sq. ft
Included: Yes

Heated: Yes
Finished: Yes
Enclosed: Yes
Contiguous: Yes
Permitted: Yes
Wet space: Yes
Addition: No
Conversion: No

5305 Riverside Drive, Pinedale, Burlington, Halton County,
Ontario, Canada, L7L 3X7

3 Floor 1 - Utility



Max Dimensions: 13'5" x 11'4"
Calculated Area: 149 sq. ft
Included: Yes

Heated: Yes
Finished: Yes
Enclosed: Yes
Contiguous: Yes
Permitted: Yes
Wet space: No
Addition: No
Conversion: No

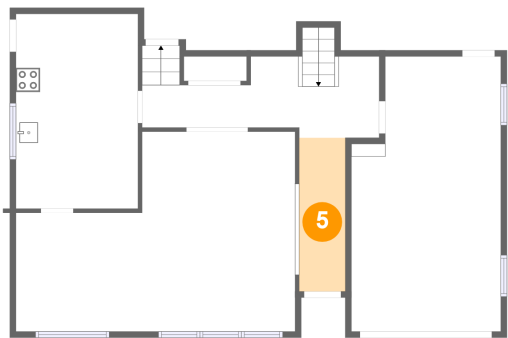
4 Floor 1 - Recreation Room



Max Dimensions: 15'8" x 20'8"
Calculated Area: 298 sq. ft
Included: Yes

Heated: Yes
Finished: Yes
Enclosed: Yes
Contiguous: Yes
Permitted: Yes
Wet space: No
Addition: No
Conversion: No

5 Floor 2 - Foyer

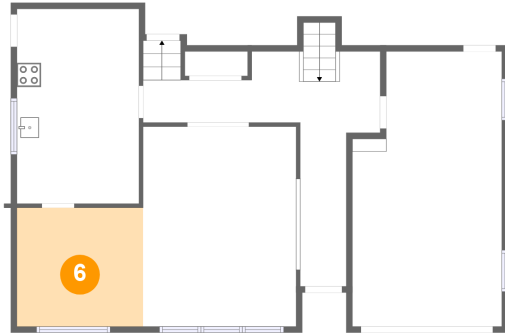


Max Dimensions: 3'10" x 12'8"
Calculated Area: 48 sq. ft
Included: Yes

Heated: Yes
Finished: Yes
Enclosed: Yes
Contiguous: Yes
Permitted: Yes
Wet space: No
Addition: No
Conversion: No

5305 Riverside Drive, Pinedale, Burlington, Halton County,
Ontario, Canada, L7L 3X7

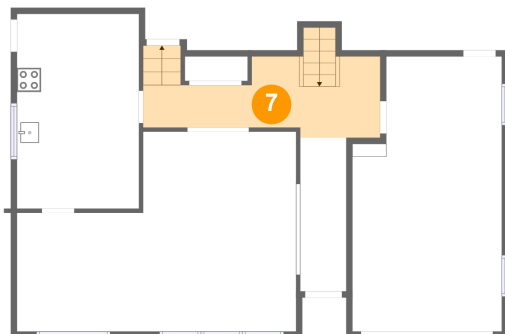
6 Floor 2 - Dining Area



Max Dimensions: 10'5" x 9'10"
Calculated Area: 102 sq. ft
Included: Yes

Heated: Yes
Finished: Yes
Enclosed: Yes
Contiguous: Yes
Permitted: Yes
Wet space: No
Addition: No
Conversion: No

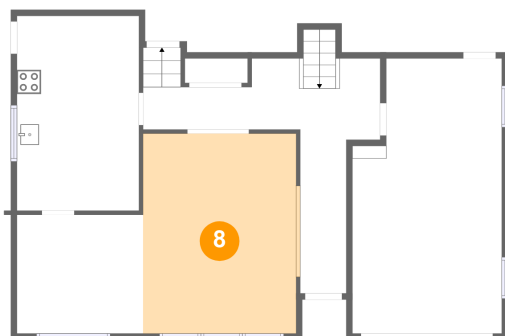
7 Floor 2 - Hall



Max Dimensions: 19'7" x 6'9"
Calculated Area: 116 sq. ft
Included: Yes

Heated: Yes
Finished: Yes
Enclosed: Yes
Contiguous: Yes
Permitted: Yes
Wet space: No
Addition: No
Conversion: No

8 Floor 2 - Living Room



Max Dimensions: 12'7" x 16'6"
Calculated Area: 211 sq. ft
Included: Yes

Heated: Yes
Finished: Yes
Enclosed: Yes
Contiguous: Yes
Permitted: Yes
Wet space: No
Addition: No
Conversion: No

Home report

5305 Riverside Drive, Pinedale, Burlington, Halton County,
Ontario, Canada, L7L 3X7

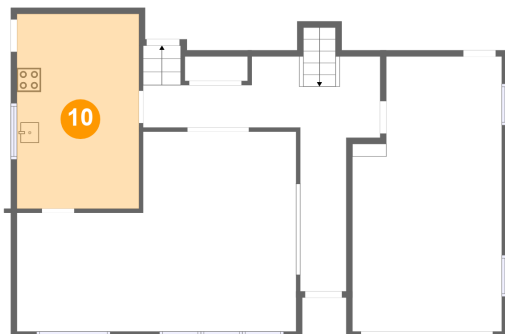
9 Floor 2 - Garage



Max Dimensions: 12'4" x 22'8"
Calculated Area: 260 sq. ft
Included: No

Heated: No
Finished: No
Enclosed: Yes
Contiguous: Yes
Permitted: Yes
Wet space: No
Addition: No
Conversion: No

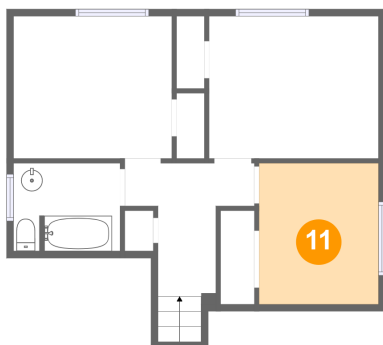
10 Floor 2 - Kitchen



Max Dimensions: 10'1" x 16'1"
Calculated Area: 162 sq. ft
Included: Yes

Heated: Yes
Finished: Yes
Enclosed: Yes
Contiguous: Yes
Permitted: Yes
Wet space: No
Addition: No
Conversion: No

11 Floor 3 - Bedroom



Max Dimensions: 8'7" x 10'2"
Calculated Area: 88 sq. ft
Included: Yes

Heated: Yes
Finished: Yes
Enclosed: Yes
Contiguous: Yes
Permitted: Yes
Wet space: No
Addition: No
Conversion: No

12 Floor 3 - Primary Bedroom



Max Dimensions: 12'3" x 10'3"
Calculated Area: 125 sq. ft
Included: Yes

Heated: Yes
Finished: Yes
Enclosed: Yes
Contiguous: Yes
Permitted: Yes
Wet space: No
Addition: No
Conversion: No

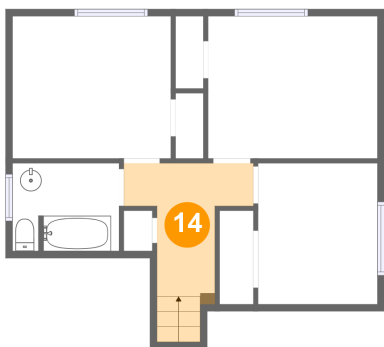
13 Floor 3 - Bedroom



Max Dimensions: 11'5" x 10'3"
Calculated Area: 117 sq. ft
Included: Yes

Heated: Yes
Finished: Yes
Enclosed: Yes
Contiguous: Yes
Permitted: Yes
Wet space: No
Addition: No
Conversion: No

14 Floor 3 - Hall

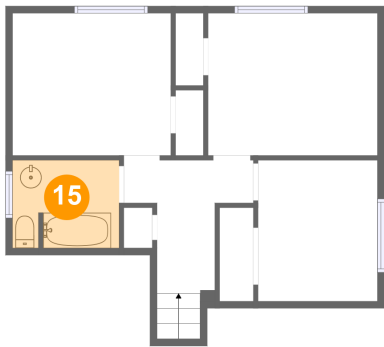


Max Dimensions: 9'4" x 9'7"
Calculated Area: 67 sq. ft
Included: Yes

Heated: Yes
Finished: Yes
Enclosed: Yes
Contiguous: Yes
Permitted: Yes
Wet space: No
Addition: No
Conversion: No

5305 Riverside Drive, Pinedale, Burlington, Halton County,
Ontario, Canada, L7L 3X7

15 Floor 3 - Bath



Max Dimensions: 7'8" x 6'4"
Calculated Area: 48 sq. ft
Included: Yes

Heated: Yes
Finished: Yes
Enclosed: Yes
Contiguous: Yes
Permitted: Yes
Wet space: Yes
Addition: No
Conversion: No