

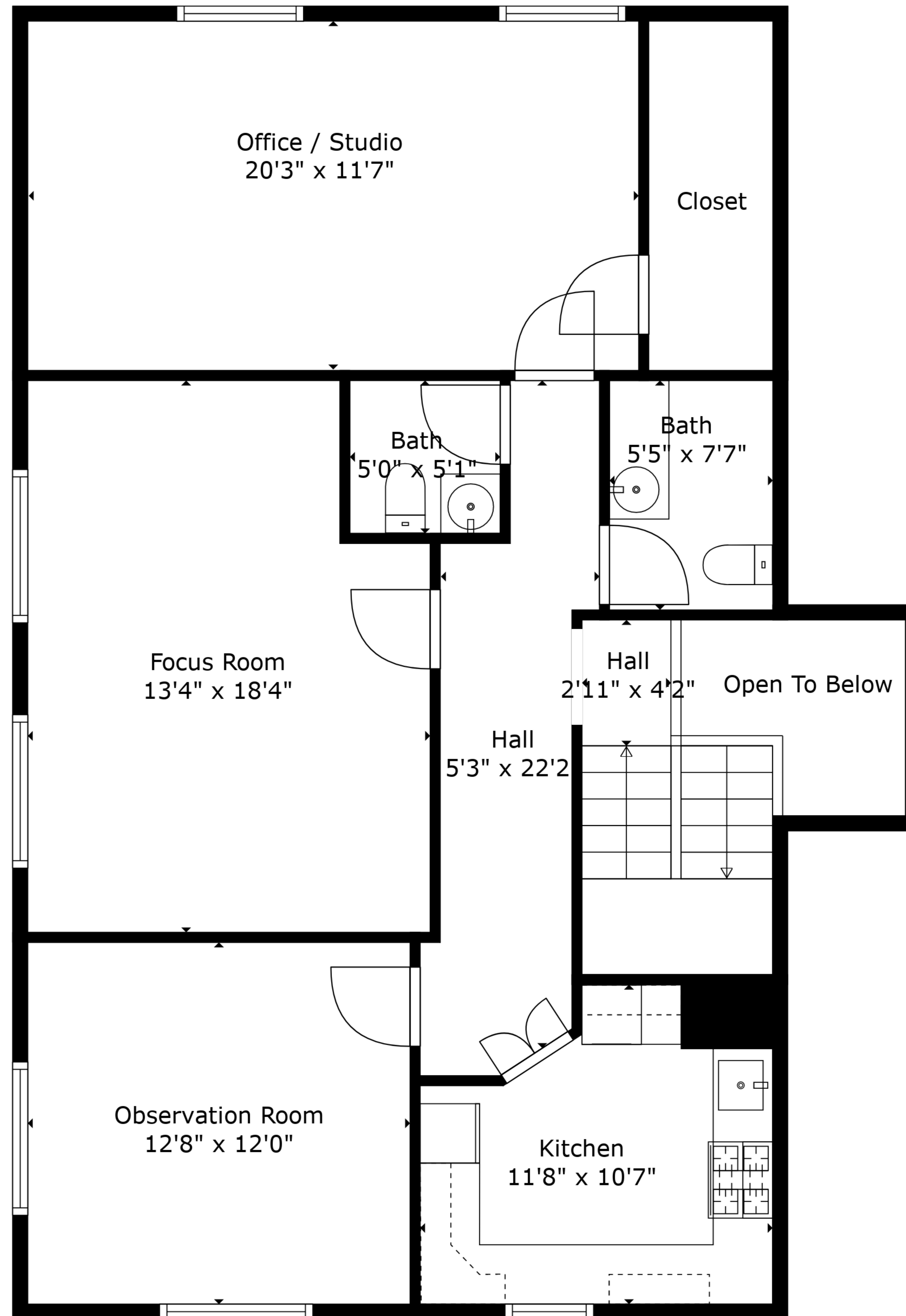
**TOTAL: 3300 sq. ft**

BELOW GROUND: 2333 sq. ft, FLOOR 2: 967 sq. ft

EXCLUDED AREAS: ELECTRICAL ROOM: 78 sq. ft, STORAGE: 39 sq. ft, OPEN TO BELOW: 39 sq. ft,  
LOW CEILING: 73 sq. ft

Sizes And Dimensions Are Approximate And For Reference Only. Actual May Vary.





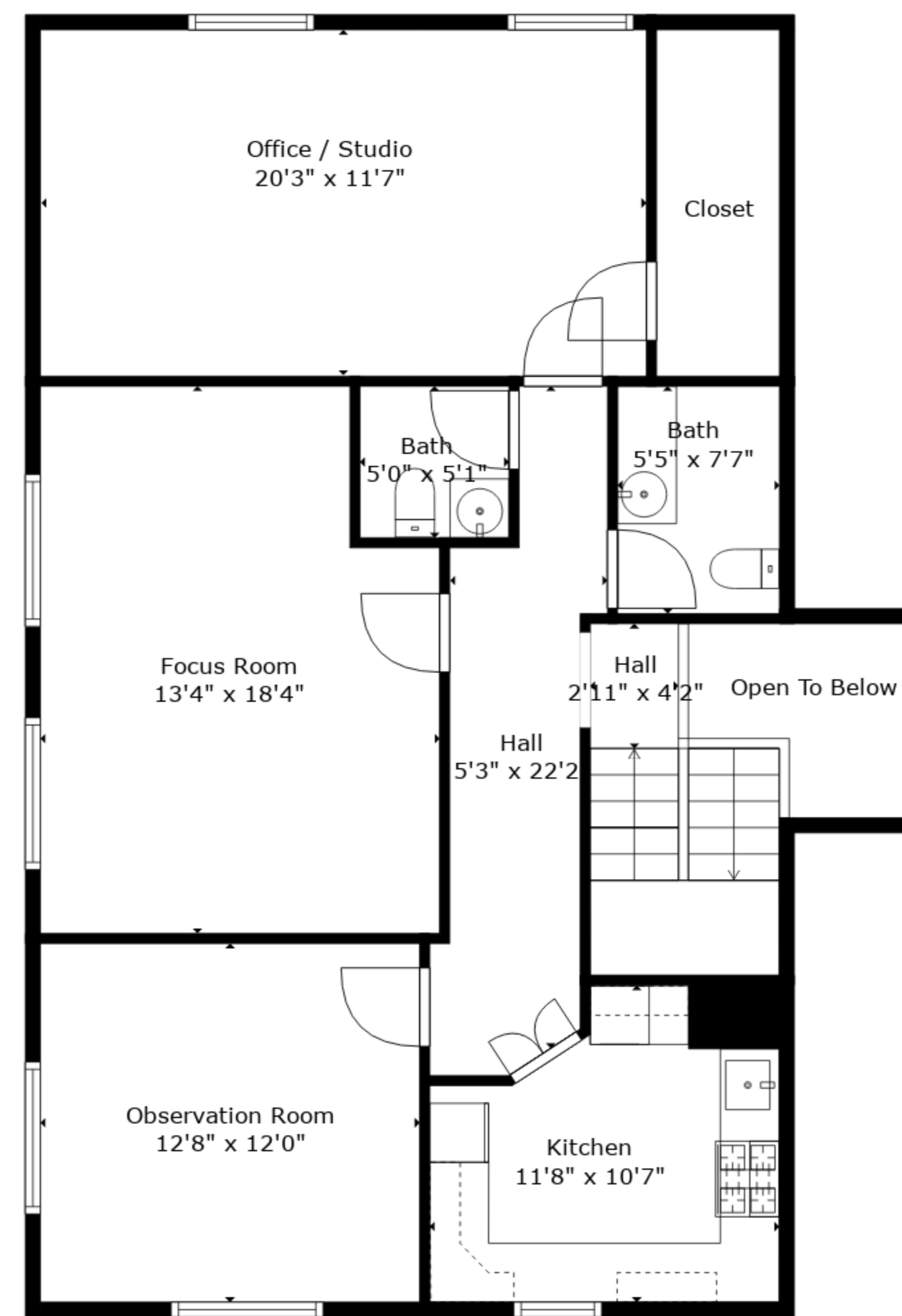
**TOTAL: 3300 sq. ft**

BELOW GROUND: 2333 sq. ft, FLOOR 2: 967 sq. ft

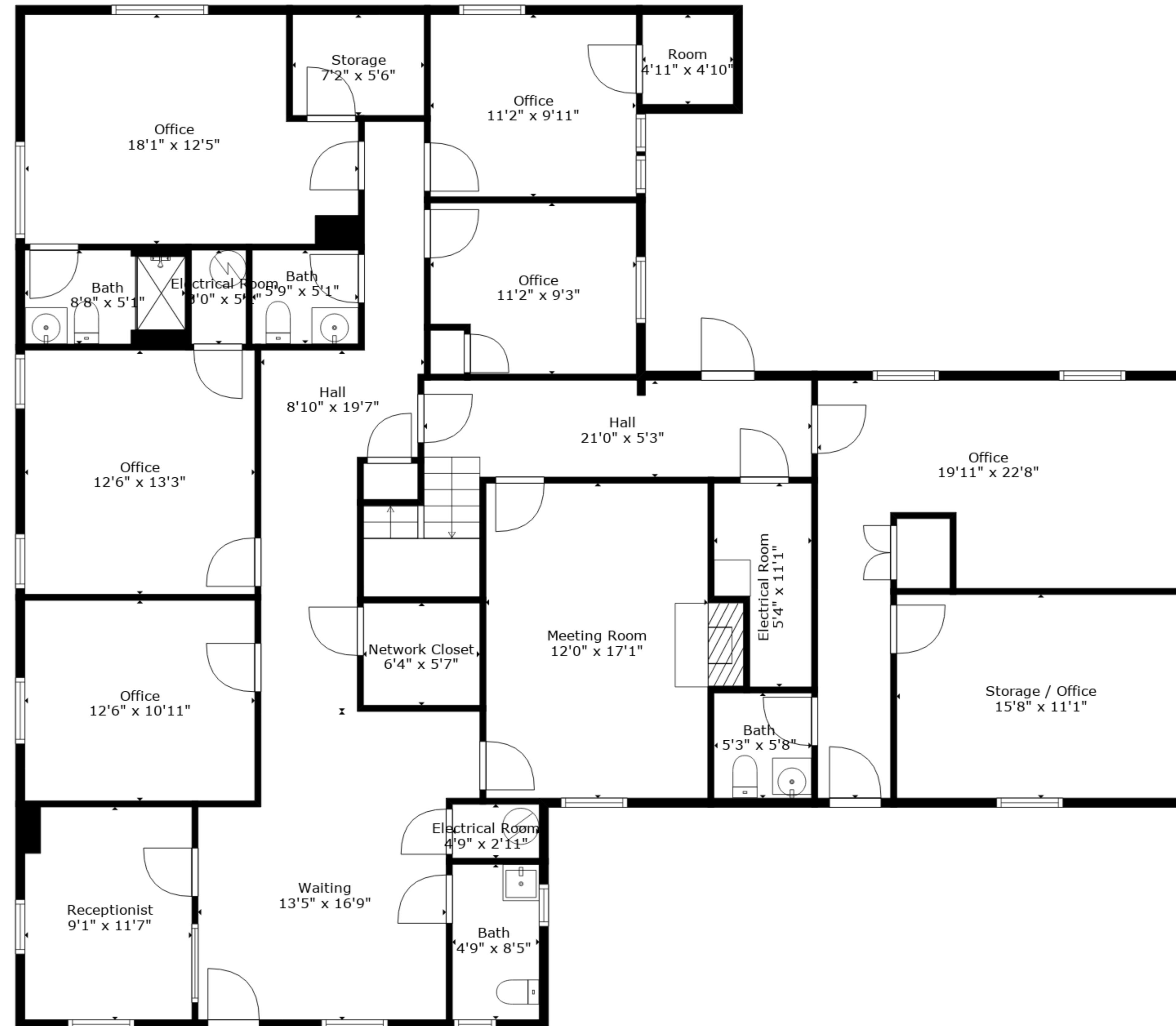
EXCLUDED AREAS: ELECTRICAL ROOM: 78 sq. ft, STORAGE: 39 sq. ft, OPEN TO BELOW: 39 sq. ft,  
LOW CEILING: 73 sq. ft

Sizes And Dimensions Are Approximate And For Reference Only. Actual May Vary.





Floor 2



Floor 1

**TOTAL: 3300 sq. ft**

BELOW GROUND: 2333 sq. ft, FLOOR 2: 967 sq. ft

EXCLUDED AREAS: ELECTRICAL ROOM: 78 sq. ft, STORAGE: 39 sq. ft, OPEN TO BELOW: 39 sq. ft,  
LOW CEILING: 73 sq. ft

Sizes And Dimensions Are Approximate And For Reference Only. Actual May Vary.

