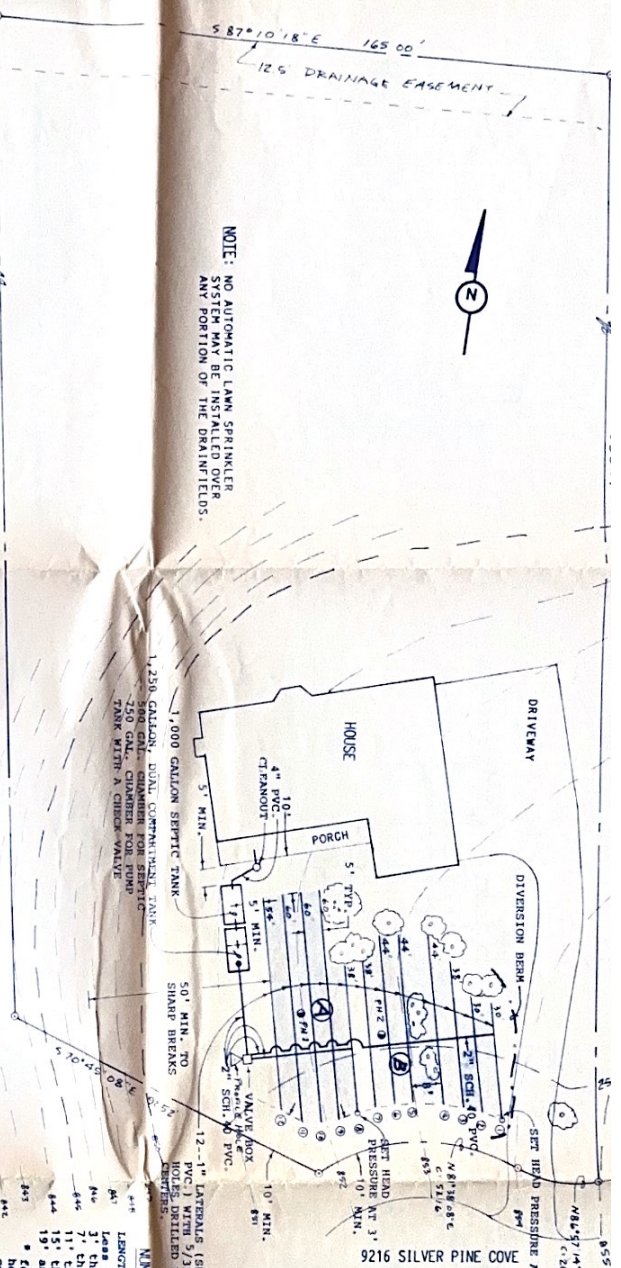


587°10'18"E 165.00'
 126 DRAINAGE EASEMENT



NOTE: NO AUTOMATIC LAWN SPRINKLER OR ANY PORTION OF THE DRAINAGE FIELDS.

SITE PLAN
 SCALE: 1"=20'



NOTE: NO AUTOMATIC LAWN SPRINKLER OR ANY PORTION OF THE DRAINAGE FIELDS.

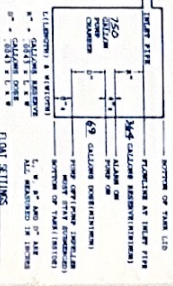
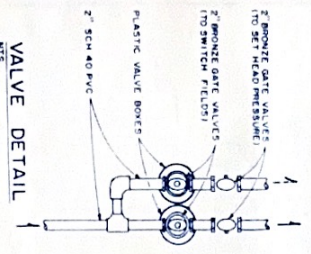
2--SEPARATE 110 VOLT CIRCUITS FOR THE PUMP AND THE ALARM ARE TO BE INSTALLED BY AN ELECTRICIAN.

PUMP & VOLTAGE REQUIREMENTS
 INSTALL PEABODY BARNES MODEL
 SE 411 (0.4 H.P.)
 SUBMERSIBLE PUMP OR EQUIV.
 FOR THE PUMP AND THE ALARM

NOTES

- The contractor is responsible for verifying the location of all utility lines.
- No food items or soil except within drainage easement.
- No lawn, trees or rock collection located within 50 ft. of any proposed driveway.
- No organized sewer collection system within 300 ft. of property line.
- The system is an automatic system. It should be used for one month or 60 days. Drains should be cleaned every two weeks or as needed. If necessary, the configuration of valves may vary slightly from that shown and should be noted on drawings.
- 540 LITERS PER FEET.

EXCAVATION NOTE:
 ANY EXCAVATION, OR PLAN FOR EXCAVATION, CONTRARY TO THIS DESIGN MUST BE BROUGHT TO THE ATTENTION OF THE ENGINEER PRIOR TO ANY CONSTRUCTION. OVER-EXCAVATION COULD CAUSE THE SYSTEM, AS SHOWN BY THIS DESIGN, TO BE IN VIOLATION OF THE REQUIREMENTS OF THE TEXAS DEPARTMENT OF HEALTH AND THE LOCAL LICENSING AUTHORITY.



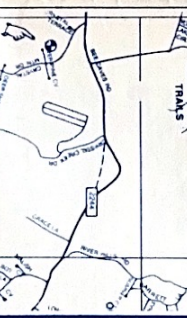
PERCOLATION TEST RESULTS

HOLE NUMBER	DEPTH (FT)	REMARKS	REMARKS	REMARKS	REMARKS	REMARKS	REMARKS
P1	12"	2.4"	12"	1/2"	1/2"		
P2	12"	2.4"	12"	1/2"	1/2"		

Note: The standard Ro value is used to size the pipe.
 PVC Tests performed by Keith Schroeder, RS 2132 Date 3/9/95
 Title: 2-45-41

WATER QUALITY ANALYSIS

DATE	LOCATION	DEPTH (FT)	TEMP (°C)	PH	COND (µMHO/CM)	TDS (MG/L)	CALC. CHLORIDE (MG/L)	NO. OF SP. OF 100 FT. PIPE	APPROXIMATE PERCENTAGE OF WATER
01/24/93	1	7	15.0	8.1	138	3.0	0.0	1	0.0
01/24/93	2	15	15.0	8.1	138	3.0	0.0	1	0.0
01/24/93	3	23	15.0	8.1	138	3.0	0.0	1	0.0
01/24/93	4	31	15.0	8.1	138	3.0	0.0	1	0.0
01/24/93	5	39	15.0	8.1	138	3.0	0.0	1	0.0
01/24/93	6	47	15.0	8.1	138	3.0	0.0	1	0.0
01/24/93	7	55	15.0	8.1	138	3.0	0.0	1	0.0
01/24/93	8	63	15.0	8.1	138	3.0	0.0	1	0.0
01/24/93	9	71	15.0	8.1	138	3.0	0.0	1	0.0
01/24/93	10	79	15.0	8.1	138	3.0	0.0	1	0.0
01/24/93	11	87	15.0	8.1	138	3.0	0.0	1	0.0
01/24/93	12	95	15.0	8.1	138	3.0	0.0	1	0.0



PERFORATION HOLES

HOLES	LENGTH OF PIPE	NUMBER OF HOLES
1	Less than 3'	1
2	3' thru 6'	2
3	7' thru 10'	3
4	11' thru 14'	4
5	15' thru 20'	5

Waste Treatment System
 VACUUM
 LOW-PRESSURE PIPE
 SCHED 40 ENGINEERING, INC.
 9216 SILVER PINE COVE

SCHED 40 ENGINEERING, INC.

Down By: _____

Revised: _____

9216 SILVER PINE COVE

Sheet 1 of 2