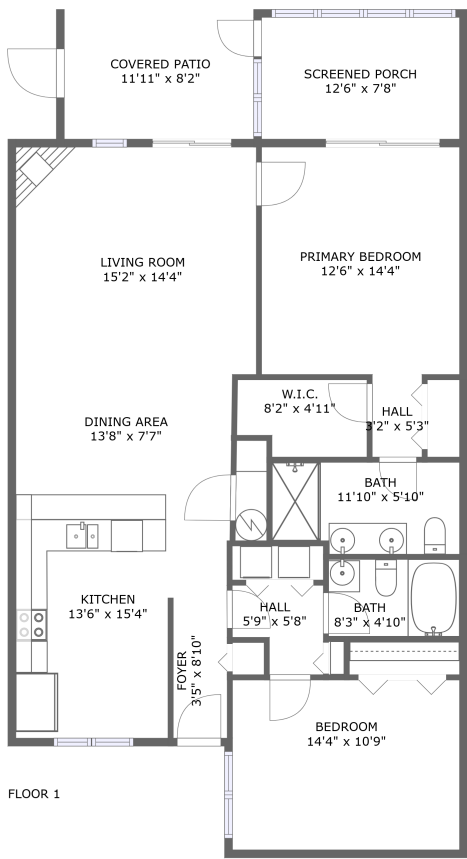






**1019 Mariners Way, Huddleston, Bedford County,
Virginia, United States, 24104, 35**

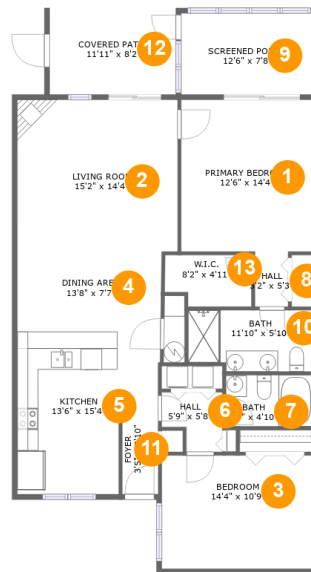


Property Summary

 **0** garages  **2** bedrooms  **2** bathrooms  **0** half baths

 **1** floors  **1,148** Gross Living Area sqft  **1,342** total sqft

1019 Mariners Way, Huddleston, Bedford County, Virginia, United States, 24104, 35



Room Dimensions

Floor 1

Total sqft: 1342

Living area: 1148

#	Room name	Dimensions	Area (sqft)	Counted as Living Area
1	Primary Bedroom	12'6" x 14'4"	180 sq. ft	Yes
2	Living Room	15'2" x 14'4"	218 sq. ft	Yes
3	Bedroom	14'4" x 10'9"	154 sq. ft	Yes
4	Dining Area	13'8" x 7'7"	106 sq. ft	Yes
5	Kitchen	13'6" x 15'4"	170 sq. ft	Yes
6	Hall	5'9" x 5'8"	27 sq. ft	Yes
7	Bath	8'3" x 4'10"	40 sq. ft	Yes
8	Hall	3'2" x 5'3"	16 sq. ft	Yes
9	Screened Porch	12'6" x 7'8"	96 sq. ft	No
10	Bath	11'10" x 5'10"	66 sq. ft	Yes
11	Foyer	3'5" x 8'10"	30 sq. ft	Yes

Scan captured on Tue, 11 Jun 2024 02:48:05 GMT

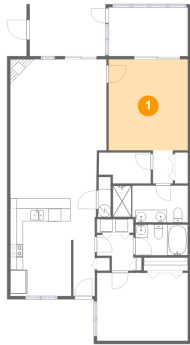
Information is calculated by CubiCasa technology; deemed highly reliable but not guaranteed.

**1019 Mariners Way, Huddleston, Bedford County,
Virginia, United States, 24104, 35**

#	Room name	Dimensions	Area (sqft)	Counted as Living Area
12	Covered Patio	11'11" x 8'2"	98 sq. ft	No
13	W.i.c.	8'2" x 4'11"	37 sq. ft	Yes

1019 Mariners Way, Huddleston, Bedford County, Virginia, United States, 24104, 35

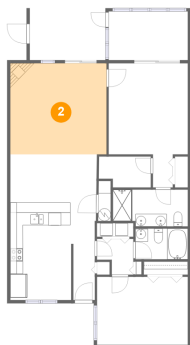
1 Floor 1 - Primary Bedroom



Dimensions: 12'6" x 14'4"
Area: 180 sq. ft
Counted as Living Area:
Yes

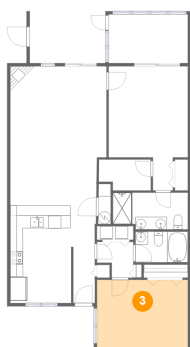
Heated: Yes
Finished: Yes
Enclosed: Yes
Contiguous:
Yes
Permitted: Yes
Wet Space: No
Addition: No
Conversion: No

2 Floor 1 - Living Room



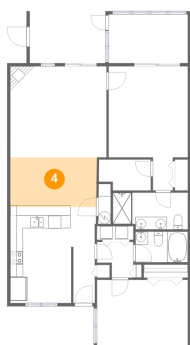
Dimensions: 15'2" x 14'4"
Area: 218 sq. ft
Counted as Living Area:
Yes

Heated: Yes
Finished: Yes
Enclosed: Yes
Contiguous:
Yes
Permitted: Yes
Wet Space: No
Addition: No
Conversion: No

**1019 Mariners Way, Huddleston, Bedford County,
Virginia, United States, 24104, 35****3 Floor 1 - Bedroom**

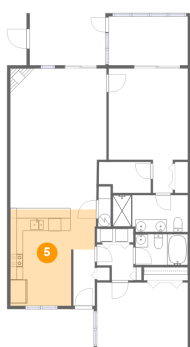
Dimensions: 14'4" x 10'9"
Area: 154 sq. ft
Counted as Living Area:
Yes

Heated: Yes
Finished: Yes
Enclosed: Yes
Contiguous:
Yes
Permitted: Yes
Wet Space: No
Addition: No
Conversion: No

4 Floor 1 - Dining Area

Dimensions: 13'8" x 7'7"
Area: 106 sq. ft
Counted as Living Area:
Yes

Heated: Yes
Finished: Yes
Enclosed: Yes
Contiguous:
Yes
Permitted: Yes
Wet Space: No
Addition: No
Conversion: No

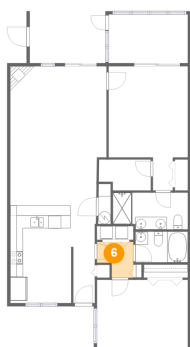
5 Floor 1 - Kitchen

Dimensions: 13'6" x 15'4"
Area: 170 sq. ft
Counted as Living Area:
Yes

Heated: Yes
Finished: Yes
Enclosed: Yes
Contiguous:
Yes
Permitted: Yes
Wet Space: No
Addition: No
Conversion: No

**1019 Mariners Way, Huddleston, Bedford County,
Virginia, United States, 24104, 35**

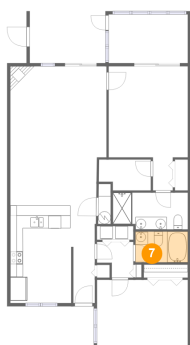
6 Floor 1 - Hall



Dimensions: 5'9" x 5'8"
Area: 27 sq. ft
Counted as Living Area:
Yes

Heated: Yes
Finished: Yes
Enclosed: Yes
Contiguous:
Yes
Permitted: Yes
Wet Space: No
Addition: No
Conversion: No

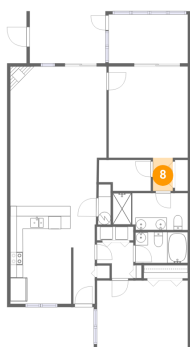
7 Floor 1 - Bath



Dimensions: 8'3" x 4'10"
Area: 40 sq. ft
Counted as Living Area:
Yes

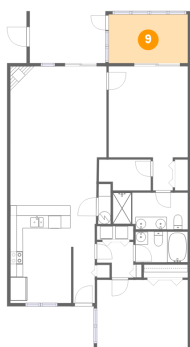
Heated: Yes
Finished: Yes
Enclosed: Yes
Contiguous:
Yes
Permitted: Yes
Wet Space: Yes
Addition: No
Conversion: No

8 Floor 1 - Hall



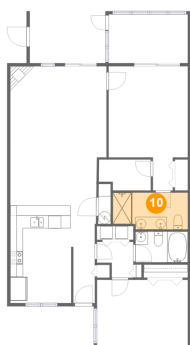
Dimensions: 3'2" x 5'3"
Area: 16 sq. ft
Counted as Living Area:
Yes

Heated: Yes
Finished: Yes
Enclosed: Yes
Contiguous:
Yes
Permitted: Yes
Wet Space: No
Addition: No
Conversion: No

**1019 Mariners Way, Huddleston, Bedford County,
Virginia, United States, 24104, 35****9 Floor 1 - Screened Porch**

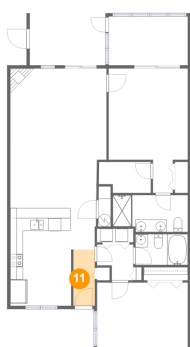
Dimensions: 12'6" x 7'8"
Area: 96 sq. ft
Counted as Living Area: No

Heated: No
Finished: Yes
Enclosed: No
Contiguous: Yes
Permitted: Yes
Wet Space: No
Addition: No
Conversion: No

10 Floor 1 - Bath

Dimensions: 11'10" x 5'10"
Area: 66 sq. ft
Counted as Living Area: Yes

Heated: Yes
Finished: Yes
Enclosed: Yes
Contiguous: Yes
Permitted: Yes
Wet Space: Yes
Addition: No
Conversion: No

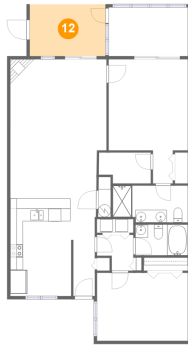
11 Floor 1 - Foyer

Dimensions: 3'5" x 8'10"
Area: 30 sq. ft
Counted as Living Area: Yes

Heated: Yes
Finished: Yes
Enclosed: Yes
Contiguous: Yes
Permitted: Yes
Wet Space: No
Addition: No
Conversion: No

**1019 Mariners Way, Huddleston, Bedford County,
Virginia, United States, 24104, 35**

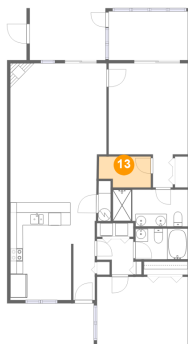
12 Floor 1 - Covered Patio



Dimensions: 11'11" x 8'2"
Area: 98 sq. ft
Counted as Living Area: No

Heated: No
Finished: Yes
Enclosed: No
Contiguous: Yes
Permitted: Yes
Wet Space: No
Addition: No
Conversion: No

13 Floor 1 - W.i.c.



Dimensions: 8'2" x 4'11"
Area: 37 sq. ft
Counted as Living Area:
Yes

Heated: Yes
Finished: Yes
Enclosed: Yes
Contiguous:
Yes
Permitted: Yes
Wet Space: No
Addition: No
Conversion: No