


Home report


9200 Wildflower Dr,Cheyenne,WY,US




Property summary




0
Garages



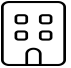
6
Bedrooms




6
Bathrooms




1
Half baths



2
Floors



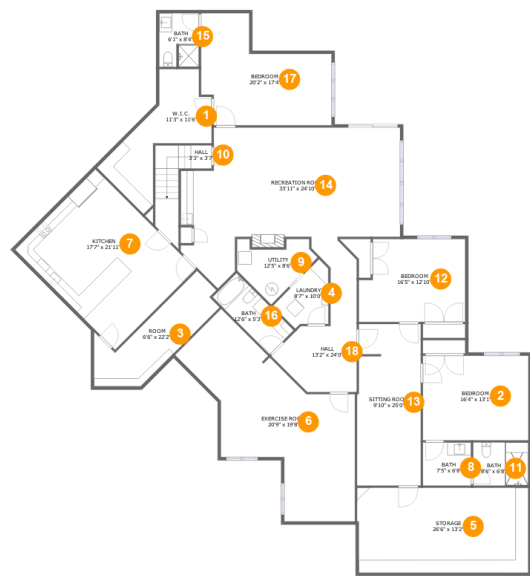
7,505
Gross living
area sqft



8,008
Total sqft

Home report

9200 Wildflower Dr,Cheyenne,WY,US



Room dimensions

Floor 1 Total sqft: 3934 Living area: 3431

| # | | Dimensions | sqft | Counted as living area |
|----|---------------|----------------|------------|------------------------|
| 1 | W.I.C. | 11'3" x 11'6" | 163 sq. ft | Yes |
| 2 | Bedroom | 16'4" x 13'1" | 213 sq. ft | Yes |
| 3 | Room | 6'6" x 22'2" | 148 sq. ft | Yes |
| 4 | Laundry | 8'7" x 10'0" | 56 sq. ft | No |
| 5 | Storage | 26'6" x 13'2" | 346 sq. ft | No |
| 6 | Exercise Room | 20'9" x 19'8" | 448 sq. ft | Yes |
| 7 | Kitchen | 17'7" x 21'11" | 386 sq. ft | Yes |
| 8 | Bath | 7'5" x 6'8" | 50 sq. ft | Yes |
| 9 | Utility | 12'5" x 8'6" | 74 sq. ft | No |
| 10 | Hall | 3'3" x 3'7" | 70 sq. ft | Yes |
| 11 | Bath | 8'6" x 6'8" | 57 sq. ft | Yes |

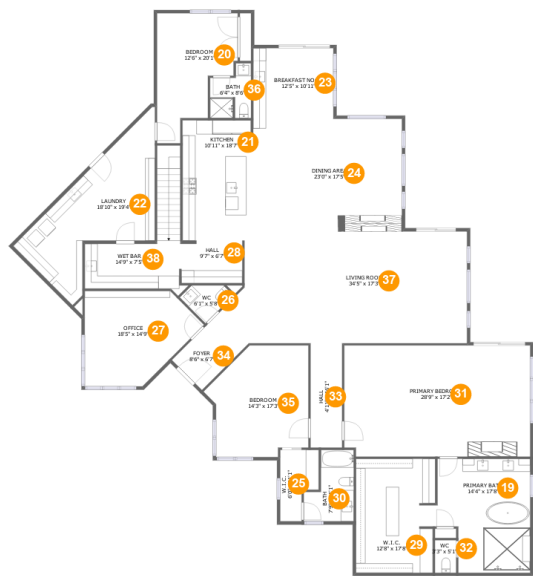
Home report

9200 Wildflower Dr,Cheyenne,WY,US

| # | | Dimensions | sqft | Counted as living area |
|----|-----------------|-----------------|------------|------------------------|
| 12 | Bedroom | 16'5" x 12'10" | 197 sq. ft | Yes |
| 13 | Sitting Room | 9'10" x 25'0" | 242 sq. ft | Yes |
| 14 | Recreation Room | 33'11" x 24'10" | 589 sq. ft | Yes |
| 15 | Bath | 6'1" x 8'4" | 50 sq. ft | Yes |
| 16 | Bath | 12'6" x 5'3" | 66 sq. ft | Yes |
| 17 | Bedroom | 20'2" x 17'4" | 261 sq. ft | Yes |
| 18 | Hall | 13'2" x 24'0" | 168 sq. ft | Yes |

Home report

9200 Wildflower Dr,Cheyenne,WY,US



Room dimensions

Floor 2 Total sqft: 4074 Living area: 4074

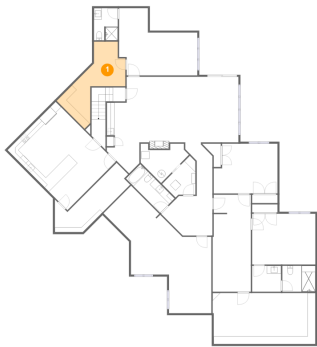
| # | | Dimensions | sqft | Counted as living area |
|----|----------------|----------------|------------|------------------------|
| 19 | Primary Bath | 14'4" x 17'8" | 230 sq. ft | Yes |
| 20 | Bedroom | 12'6" x 20'1" | 185 sq. ft | Yes |
| 21 | Kitchen | 10'11" x 18'7" | 201 sq. ft | Yes |
| 22 | Laundry | 18'10" x 19'4" | 286 sq. ft | Yes |
| 23 | Breakfast Nook | 12'5" x 10'11" | 136 sq. ft | Yes |
| 24 | Dining Area | 23'0" x 17'5" | 402 sq. ft | Yes |
| 25 | W.I.C. | 6'0" x 11'1" | 53 sq. ft | Yes |
| 26 | WC | 6'1" x 5'8" | 28 sq. ft | Yes |
| 27 | Office | 18'5" x 14'9" | 214 sq. ft | Yes |
| 28 | Hall | 9'7" x 6'7" | 62 sq. ft | Yes |
| 29 | W.I.C. | 12'8" x 17'8" | 214 sq. ft | Yes |

Home report

9200 Wildflower Dr,Cheyenne,WY,US

| # | | Dimensions | sqft | Counted as living area |
|----|-----------------|---------------|------------|------------------------|
| 30 | Bath | 7'9" x 11'1" | 68 sq. ft | Yes |
| 31 | Primary Bedroom | 28'9" x 17'2" | 492 sq. ft | Yes |
| 32 | WC | 3'3" x 5'1" | 17 sq. ft | Yes |
| 33 | Hall | 4'11" x 16'1" | 79 sq. ft | Yes |
| 34 | Foyer | 8'6" x 6'7" | 46 sq. ft | Yes |
| 35 | Bedroom | 14'3" x 17'3" | 230 sq. ft | Yes |
| 36 | Bath | 6'4" x 8'6" | 44 sq. ft | Yes |
| 37 | Living Room | 34'5" x 17'3" | 632 sq. ft | Yes |
| 38 | Wet Bar | 14'9" x 7'5" | 159 sq. ft | Yes |

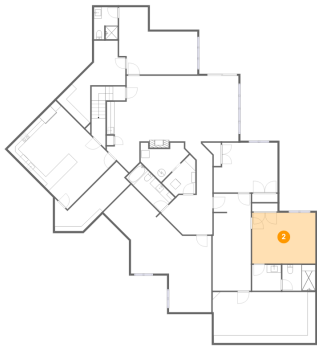
1 Floor 1 - W.I.C.



Dimensions: 11'3" x 11'6"
Area: 163 sq. ft
Counted as living area: Yes

Heated: Yes
Finished: Yes
Enclosed: Yes
Contiguous: Yes
Permitted: Yes
Wet space: No
Addition: No
Conversion: No

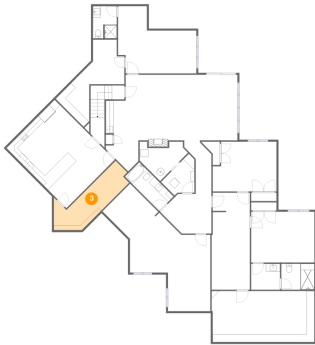
2 Floor 1 - Bedroom



Dimensions: 16'4" x 13'1"
Area: 213 sq. ft
Counted as living area: Yes

Heated: Yes
Finished: Yes
Enclosed: Yes
Contiguous: Yes
Permitted: Yes
Wet space: No
Addition: No
Conversion: No

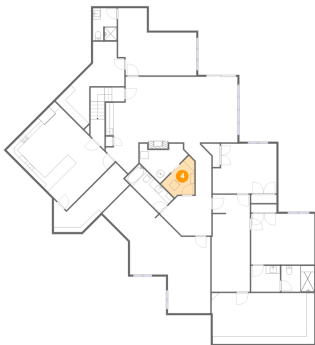
3 Floor 1 - Room



Dimensions: 6'6" x 22'2"
Area: 148 sq. ft
Counted as living area: Yes

Heated: Yes
Finished: Yes
Enclosed: Yes
Contiguous: Yes
Permitted: Yes
Wet space: No
Addition: No
Conversion: No

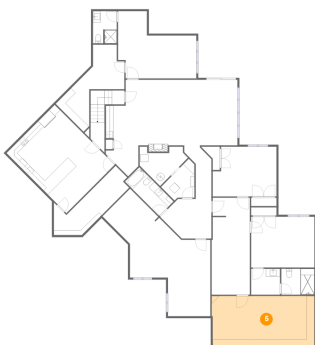
4 Floor 1 - Laundry



Dimensions: 8'7" x 10'0"
Area: 56 sq. ft
Counted as living area: No

Heated: Yes
Finished: No
Enclosed: Yes
Contiguous: Yes
Permitted: Yes
Wet space: No
Addition: No
Conversion: No

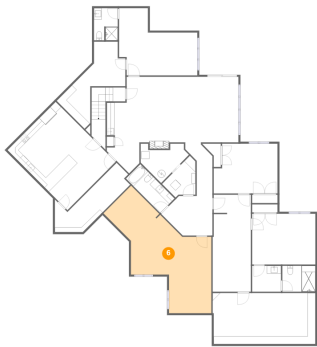
5 Floor 1 - Storage



Dimensions: 26'6" x 13'2"
Area: 346 sq. ft
Counted as living area: No

Heated: No
Finished: No
Enclosed: No
Contiguous: Yes
Permitted: Yes
Wet space: No
Addition: No
Conversion: No

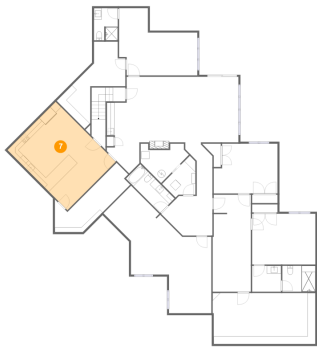
6 Floor 1 - Exercise Room



Dimensions: 20'9" x 19'8"
Area: 448 sq. ft
Counted as living area: Yes

Heated: Yes
Finished: Yes
Enclosed: Yes
Contiguous: Yes
Permitted: Yes
Wet space: No
Addition: No
Conversion: No

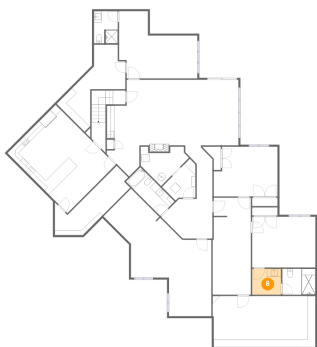
7 Floor 1 - Kitchen



Dimensions: 17'7" x 21'11"
Area: 386 sq. ft
Counted as living area: Yes

Heated: Yes
Finished: Yes
Enclosed: Yes
Contiguous: Yes
Permitted: Yes
Wet space: No
Addition: No
Conversion: No

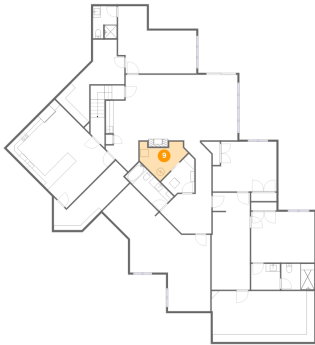
8 Floor 1 - Bath



Dimensions: 7'5" x 6'8"
Area: 50 sq. ft
Counted as living area: Yes

Heated: Yes
Finished: Yes
Enclosed: Yes
Contiguous: Yes
Permitted: Yes
Wet space: Yes
Addition: No
Conversion: No

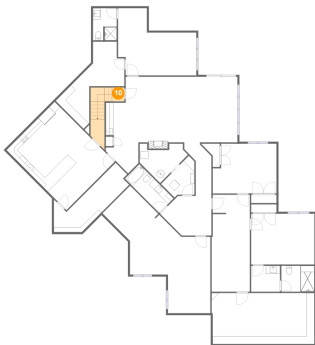
9 Floor 1 - Utility



Dimensions: 12'5" x 8'6"
Area: 74 sq. ft
Counted as living area: No

Heated: Yes
Finished: No
Enclosed: Yes
Contiguous: Yes
Permitted: Yes
Wet space: No
Addition: No
Conversion: No

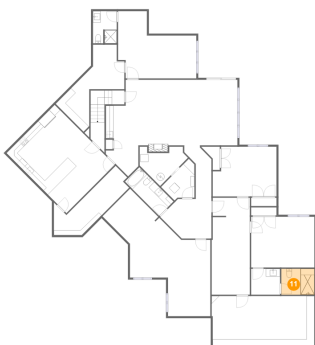
10 Floor 1 - Hall



Dimensions: 3'3" x 3'7"
Area: 70 sq. ft
Counted as living area: Yes

Heated: Yes
Finished: Yes
Enclosed: Yes
Contiguous: Yes
Permitted: Yes
Wet space: No
Addition: No
Conversion: No

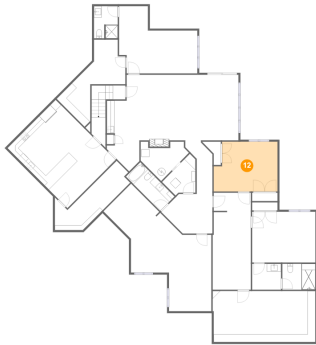
11 Floor 1 - Bath



Dimensions: 8'6" x 6'8"
Area: 57 sq. ft
Counted as living area: Yes

Heated: Yes
Finished: Yes
Enclosed: Yes
Contiguous: Yes
Permitted: Yes
Wet space: Yes
Addition: No
Conversion: No

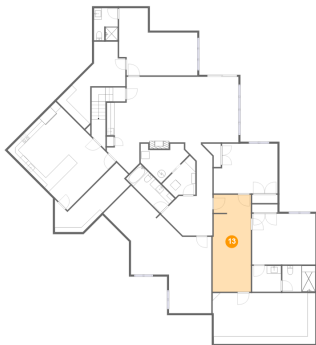
12 Floor 1 - Bedroom



Dimensions: 16'5" x 12'10"
Area: 197 sq. ft
Counted as living area: Yes

Heated: Yes
Finished: Yes
Enclosed: Yes
Contiguous: Yes
Permitted: Yes
Wet space: No
Addition: No
Conversion: No

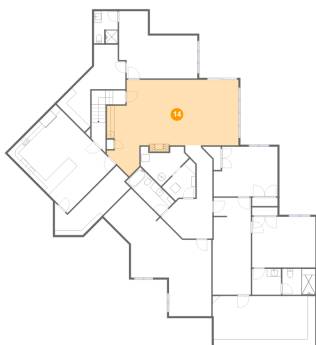
13 Floor 1 - Sitting Room



Dimensions: 9'10" x 25'0"
Area: 242 sq. ft
Counted as living area: Yes

Heated: Yes
Finished: Yes
Enclosed: Yes
Contiguous: Yes
Permitted: Yes
Wet space: No
Addition: No
Conversion: No

14 Floor 1 - Recreation Room



Dimensions: 33'11" x 24'10"
Area: 589 sq. ft
Counted as living area: Yes

Heated: Yes
Finished: Yes
Enclosed: Yes
Contiguous: Yes
Permitted: Yes
Wet space: No
Addition: No
Conversion: No

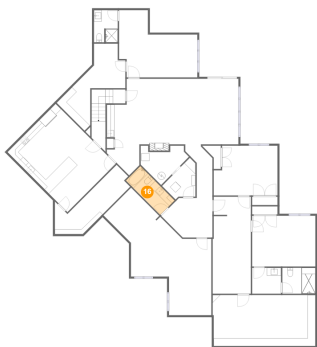
15 Floor 1 - Bath



Dimensions: 6'1" x 8'4"
Area: 50 sq. ft
Counted as living area: Yes

Heated: Yes
Finished: Yes
Enclosed: Yes
Contiguous: Yes
Permitted: Yes
Wet space: Yes
Addition: No
Conversion: No

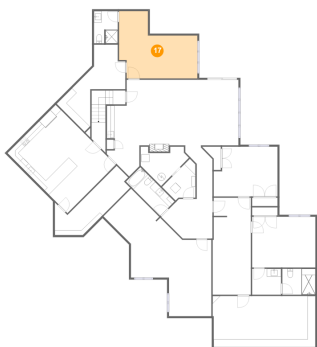
16 Floor 1 - Bath



Dimensions: 12'6" x 5'3"
Area: 66 sq. ft
Counted as living area: Yes

Heated: Yes
Finished: Yes
Enclosed: Yes
Contiguous: Yes
Permitted: Yes
Wet space: Yes
Addition: No
Conversion: No

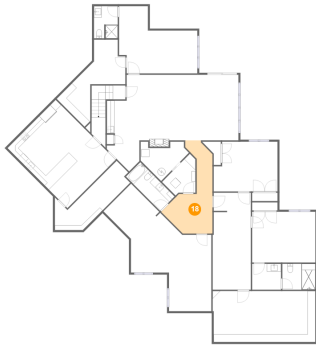
17 Floor 1 - Bedroom



Dimensions: 20'2" x 17'4"
Area: 261 sq. ft
Counted as living area: Yes

Heated: Yes
Finished: Yes
Enclosed: Yes
Contiguous: Yes
Permitted: Yes
Wet space: No
Addition: No
Conversion: No

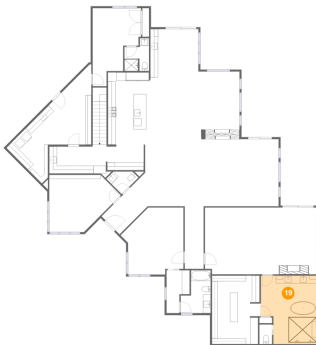
18 Floor 1 - Hall



Dimensions: 13'2" x 24'0"
Area: 168 sq. ft
Counted as living area: Yes

Heated: Yes
Finished: Yes
Enclosed: Yes
Contiguous: Yes
Permitted: Yes
Wet space: No
Addition: No
Conversion: No

19 Floor 2 - Primary Bath



Dimensions: 14'4" x 17'8"
Area: 230 sq. ft
Counted as living area: Yes

Heated: Yes
Finished: Yes
Enclosed: Yes
Contiguous: Yes
Permitted: Yes
Wet space: Yes
Addition: No
Conversion: No

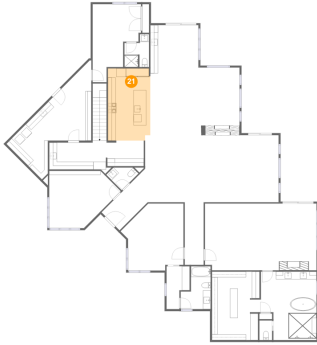
20 Floor 2 - Bedroom



Dimensions: 12'6" x 20'1"
Area: 185 sq. ft
Counted as living area: Yes

Heated: Yes
Finished: Yes
Enclosed: Yes
Contiguous: Yes
Permitted: Yes
Wet space: No
Addition: No
Conversion: No

21 Floor 2 - Kitchen



Dimensions: 10'11" x 18'7"
Area: 201 sq. ft
Counted as living area: Yes

Heated: Yes
Finished: Yes
Enclosed: Yes
Contiguous: Yes
Permitted: Yes
Wet space: No
Addition: No
Conversion: No

22 Floor 2 - Laundry



Dimensions: 18'10" x 19'4"
Area: 286 sq. ft
Counted as living area: Yes

Heated: Yes
Finished: Yes
Enclosed: Yes
Contiguous: Yes
Permitted: Yes
Wet space: No
Addition: No
Conversion: No

23 Floor 2 - Breakfast Nook



Dimensions: 12'5" x 10'11"
Area: 136 sq. ft
Counted as living area: Yes

Heated: Yes
Finished: Yes
Enclosed: Yes
Contiguous: Yes
Permitted: Yes
Wet space: No
Addition: No
Conversion: No

24 Floor 2 - Dining Area



Dimensions: 23'0" x 17'5"
Area: 402 sq. ft
Counted as living area: Yes

Heated: Yes
Finished: Yes
Enclosed: Yes
Contiguous: Yes
Permitted: Yes
Wet space: No
Addition: No
Conversion: No

25 Floor 2 - W.I.C.



Dimensions: 6'0" x 11'1"
Area: 53 sq. ft
Counted as living area: Yes

Heated: Yes
Finished: Yes
Enclosed: Yes
Contiguous: Yes
Permitted: Yes
Wet space: No
Addition: No
Conversion: No

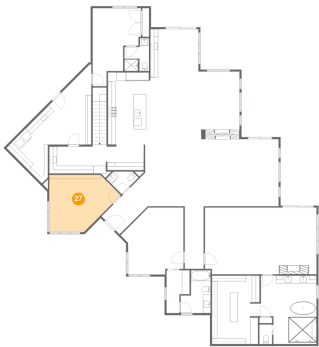
26 Floor 2 - WC



Dimensions: 6'1" x 5'8"
Area: 28 sq. ft
Counted as living area: Yes

Heated: Yes
Finished: Yes
Enclosed: Yes
Contiguous: Yes
Permitted: Yes
Wet space: Yes
Addition: No
Conversion: No

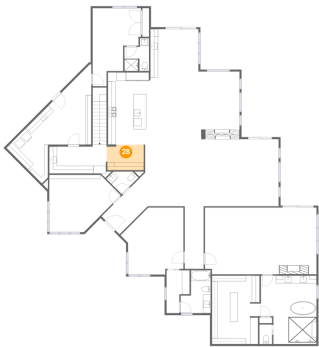
27 Floor 2 - Office



Dimensions: 18'5" x 14'9"
Area: 214 sq. ft
Counted as living area: Yes

Heated: Yes
Finished: Yes
Enclosed: Yes
Contiguous: Yes
Permitted: Yes
Wet space: No
Addition: No
Conversion: No

28 Floor 2 - Hall



Dimensions: 9'7" x 6'7"
Area: 62 sq. ft
Counted as living area: Yes

Heated: Yes
Finished: Yes
Enclosed: Yes
Contiguous: Yes
Permitted: Yes
Wet space: No
Addition: No
Conversion: No

29 Floor 2 - W.I.C.



Dimensions: 12'8" x 17'8"
Area: 214 sq. ft
Counted as living area: Yes

Heated: Yes
Finished: Yes
Enclosed: Yes
Contiguous: Yes
Permitted: Yes
Wet space: No
Addition: No
Conversion: No

30 Floor 2 - Bath



Dimensions: 7'9" x 11'1"
Area: 68 sq. ft
Counted as living area: Yes

Heated: Yes
Finished: Yes
Enclosed: Yes
Contiguous: Yes
Permitted: Yes
Wet space: Yes
Addition: No
Conversion: No

31 Floor 2 - Primary Bedroom



Dimensions: 28'9" x 17'2"
Area: 492 sq. ft
Counted as living area: Yes

Heated: Yes
Finished: Yes
Enclosed: Yes
Contiguous: Yes
Permitted: Yes
Wet space: No
Addition: No
Conversion: No

32 Floor 2 - WC



Dimensions: 3'3" x 5'1"
Area: 17 sq. ft
Counted as living area: Yes

Heated: Yes
Finished: Yes
Enclosed: Yes
Contiguous: Yes
Permitted: Yes
Wet space: Yes
Addition: No
Conversion: No

33 Floor 2 - Hall



Dimensions: 4'11" x 16'1"
Area: 79 sq. ft
Counted as living area: Yes

Heated: Yes
Finished: Yes
Enclosed: Yes
Contiguous: Yes
Permitted: Yes
Wet space: No
Addition: No
Conversion: No

34 Floor 2 - Foyer



Dimensions: 8'6" x 6'7"
Area: 46 sq. ft
Counted as living area: Yes

Heated: Yes
Finished: Yes
Enclosed: Yes
Contiguous: Yes
Permitted: Yes
Wet space: No
Addition: No
Conversion: No

35 Floor 2 - Bedroom



Dimensions: 14'3" x 17'3"
Area: 230 sq. ft
Counted as living area: Yes

Heated: Yes
Finished: Yes
Enclosed: Yes
Contiguous: Yes
Permitted: Yes
Wet space: No
Addition: No
Conversion: No

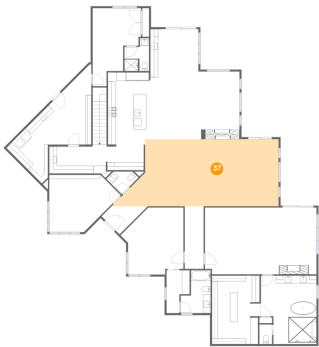
36 Floor 2 - Bath



Dimensions: 6'4" x 8'6"
Area: 44 sq. ft
Counted as living area: Yes

Heated: Yes
Finished: Yes
Enclosed: Yes
Contiguous: Yes
Permitted: Yes
Wet space: Yes
Addition: No
Conversion: No

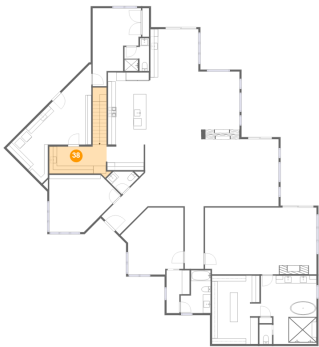
37 Floor 2 - Living Room



Dimensions: 34'5" x 17'3"
Area: 632 sq. ft
Counted as living area: Yes

Heated: Yes
Finished: Yes
Enclosed: Yes
Contiguous: Yes
Permitted: Yes
Wet space: No
Addition: No
Conversion: No

38 Floor 2 - Wet Bar



Dimensions: 14'9" x 7'5"
Area: 159 sq. ft
Counted as living area: Yes

Heated: Yes
Finished: Yes
Enclosed: Yes
Contiguous: Yes
Permitted: Yes
Wet space: No
Addition: No
Conversion: No