

Home data report

16554 Prospect Lane, Anthem Highlands, Broomfield,  
Broomfield County, Colorado, United States, 80023



Total Area: 2516 sq. ft

Basement 1: 974 sq. ft, 1st Floor: 1232 sq. ft, 2nd Floor: 1284 sq. ft

Excluded: Storage 73 sq. ft, Utility 138 sq. ft, Garage 465 sq. ft

Property summary

 **3** Floors

 **4** Bedrooms

 **3** Bathrooms

Home data report

**16554 Prospect Lane, Anthem Highlands, Broomfield,  
Broomfield County, Colorado, United States, 80023**



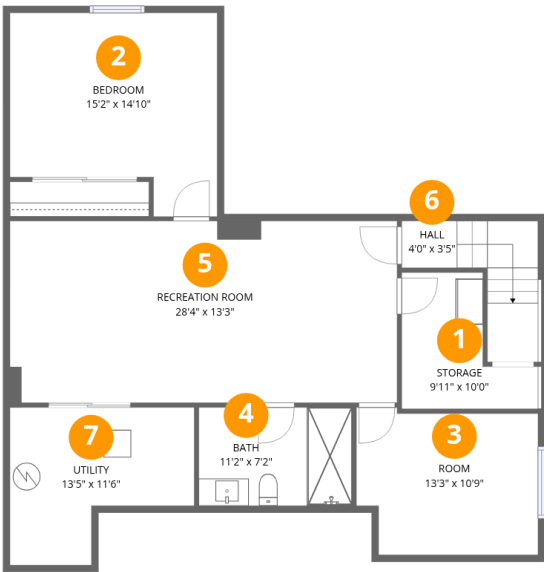
**1**  
Half baths



**1**  
Garages

Home data report

16554 Prospect Lane, Anthem Highlands, Broomfield,  
Broomfield County, Colorado, United States, 80023

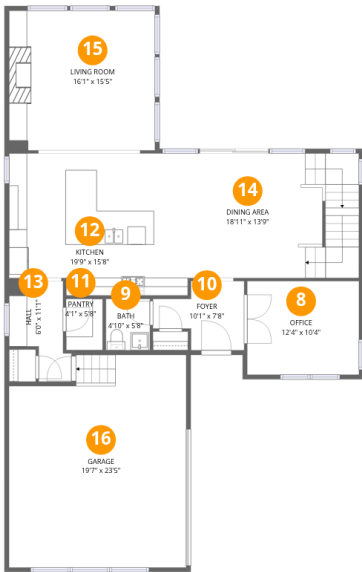


Room dimensions

Floor 1 Below grade Total:974sqft   Excluded: 211sqft

#		Dimensions	sqft	Counted as living area
1	Storage	9'11" x 10'0"	99 sq. ft	No
2	Bedroom	15'2" x 14'10"	225 sq. ft	Yes
3	Room	13'3" x 10'9"	143 sq. ft	Yes
4	Bath	11'2" x 7'2"	80 sq. ft	Yes
5	Recreation Room	28'4" x 13'3"	376 sq. ft	Yes
6	Hall	4'0" x 3'5"	14 sq. ft	Yes
7	Utility	13'5" x 11'6"	155 sq. ft	No

16554 Prospect Lane, Anthem Highlands, Broomfield,  
Broomfield County, Colorado, United States, 80023



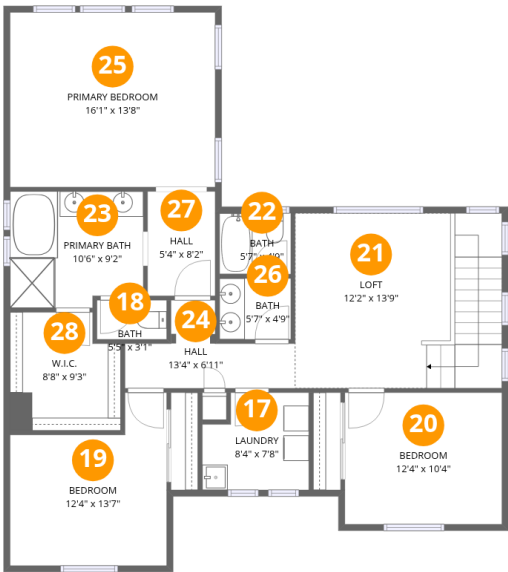
Room dimensions

Floor 2 Total:1232sqft   Excluded: 465sqft

#		Dimensions	sqft	Counted as living area
8	Office	12'4" x 10'4"	127 sq. ft	Yes
9	Bath	4'10" x 5'8"	28 sq. ft	Yes
10	Foyer	10'1" x 7'8"	77 sq. ft	Yes
11	Pantry	4'1" x 5'8"	23 sq. ft	Yes
12	Kitchen	19'9" x 15'8"	310 sq. ft	Yes
13	Hall	6'0" x 11'1"	66 sq. ft	Yes
14	Dining Area	18'11" x 13'9"	259 sq. ft	Yes
15	Living Room	16'1" x 15'5"	248 sq. ft	Yes
16	Garage	19'7" x 23'5"	458 sq. ft	No

Home data report

16554 Prospect Lane, Anthem Highlands, Broomfield,  
Broomfield County, Colorado, United States, 80023



Room dimensions

Floor 3 Total:1284sqft   Excluded: 0sqft

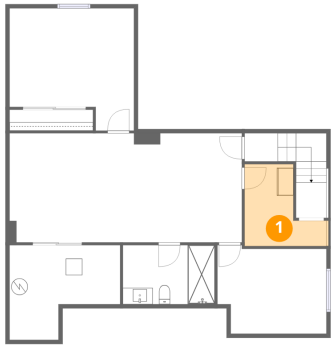
#		Dimensions	sqft	Counted as living area
17	Laundry	8'4" x 7'8"	64 sq. ft	Yes
18	Bath	5'5" x 3'1"	17 sq. ft	Yes
19	Bedroom	12'4" x 13'7"	167 sq. ft	Yes
20	Bedroom	12'4" x 10'4"	127 sq. ft	Yes
21	Loft	12'2" x 13'9"	168 sq. ft	Yes
22	Bath	5'7" x 4'9"	27 sq. ft	Yes
23	Primary Bath	10'6" x 9'2"	96 sq. ft	Yes
24	Hall	13'4" x 6'11"	92 sq. ft	Yes
25	Primary Bedroom	16'1" x 13'8"	220 sq. ft	Yes
26	Bath	5'7" x 4'9"	27 sq. ft	Yes
27	Hall	5'4" x 8'2"	44 sq. ft	Yes

Home data report

16554 Prospect Lane, Anthem Highlands, Broomfield,  
Broomfield County, Colorado, United States, 80023

#		Dimensions	sqft	Counted as living area
28	W.I.C.	8'8" x 9'3"	81 sq. ft	Yes

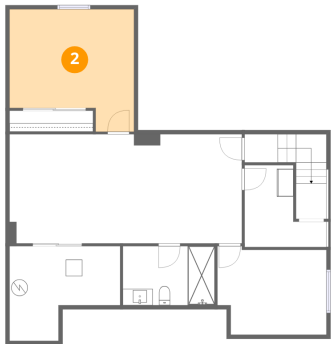
1 Floor 1 - Storage



Dimensions: 9'11" x 10'0"  
Area: 99 sq. ft  
Counted as living area: No

Heated: No  
Finished: No  
Enclosed: No  
Contiguous: Yes  
Permitted: Yes  
Wet space: No  
Addition: No  
Conversion: No

2 Floor 1 - Bedroom

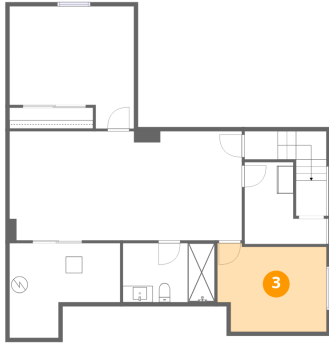


Dimensions: 15'2" x 14'10"  
Area: 225 sq. ft  
Counted as living area: Yes

Heated: Yes  
Finished: Yes  
Enclosed: Yes  
Contiguous: Yes  
Permitted: Yes  
Wet space: No  
Addition: No  
Conversion: No

16554 Prospect Lane, Anthem Highlands, Broomfield,  
Broomfield County, Colorado, United States, 80023

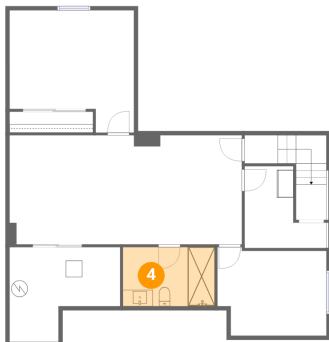
### 3 Floor 1 - Room



Dimensions: 13'3" x 10'9"  
Area: 143 sq. ft  
Counted as living area: Yes

Heated: Yes  
Finished: Yes  
Enclosed: Yes  
Contiguous: Yes  
Permitted: Yes  
Wet space: No  
Addition: No  
Conversion: No

### 4 Floor 1 - Bath



Dimensions: 11'2" x 7'2"  
Area: 80 sq. ft  
Counted as living area: Yes

Heated: Yes  
Finished: Yes  
Enclosed: Yes  
Contiguous: Yes  
Permitted: Yes  
Wet space: Yes  
Addition: No  
Conversion: No

### 5 Floor 1 - Recreation Room



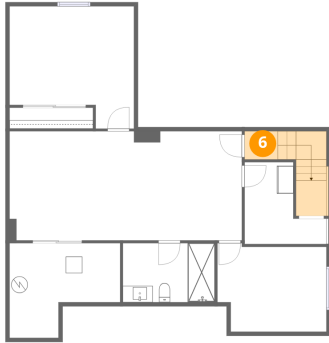
Dimensions: 28'4" x 13'3"  
Area: 376 sq. ft  
Counted as living area: Yes

Heated: Yes  
Finished: Yes  
Enclosed: Yes  
Contiguous: Yes  
Permitted: Yes  
Wet space: No  
Addition: No  
Conversion: No



16554 Prospect Lane, Anthem Highlands, Broomfield,  
Broomfield County, Colorado, United States, 80023

## 6 Floor 1 - Hall



Dimensions: 4'0" x 3'5"  
Area: 14 sq. ft  
Counted as living area: Yes

Heated: Yes  
Finished: Yes  
Enclosed: Yes  
Contiguous: Yes  
Permitted: Yes  
Wet space: No  
Addition: No  
Conversion: No

## 7 Floor 1 - Utility



Dimensions: 13'5" x 11'6"  
Area: 155 sq. ft  
Counted as living area: No

Heated: Yes  
Finished: No  
Enclosed: Yes  
Contiguous: Yes  
Permitted: Yes  
Wet space: No  
Addition: No  
Conversion: No

## 8 Floor 2 - Office



Dimensions: 12'4" x 10'4"  
Area: 127 sq. ft  
Counted as living area: Yes

Heated: Yes  
Finished: Yes  
Enclosed: Yes  
Contiguous: Yes  
Permitted: Yes  
Wet space: No  
Addition: No  
Conversion: No

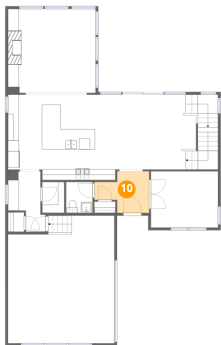
9 Floor 2 - Bath



Dimensions: 4'10" x 5'8"  
Area: 28 sq. ft  
Counted as living area: Yes

Heated: Yes  
Finished: Yes  
Enclosed: Yes  
Contiguous: Yes  
Permitted: Yes  
Wet space: Yes  
Addition: No  
Conversion: No

10 Floor 2 - Foyer



Dimensions: 10'1" x 7'8"  
Area: 77 sq. ft  
Counted as living area: Yes

Heated: Yes  
Finished: Yes  
Enclosed: Yes  
Contiguous: Yes  
Permitted: Yes  
Wet space: No  
Addition: No  
Conversion: No

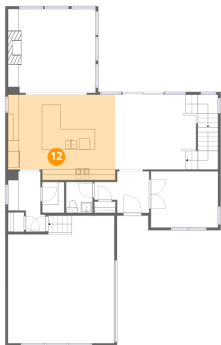
11 Floor 2 - Pantry



Dimensions: 4'1" x 5'8"  
Area: 23 sq. ft  
Counted as living area: Yes

Heated: Yes  
Finished: Yes  
Enclosed: Yes  
Contiguous: Yes  
Permitted: Yes  
Wet space: No  
Addition: No  
Conversion: No

12 Floor 2 - Kitchen



Dimensions: 19'9" x 15'8"  
Area: 310 sq. ft  
Counted as living area: Yes

Heated: Yes  
Finished: Yes  
Enclosed: Yes  
Contiguous: Yes  
Permitted: Yes  
Wet space: No  
Addition: No  
Conversion: No

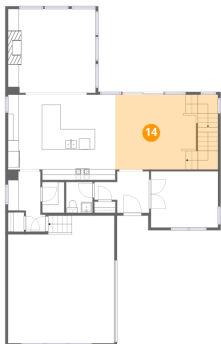
13 Floor 2 - Hall



Dimensions: 6'0" x 11'1"  
Area: 66 sq. ft  
Counted as living area: Yes

Heated: Yes  
Finished: Yes  
Enclosed: Yes  
Contiguous: Yes  
Permitted: Yes  
Wet space: No  
Addition: No  
Conversion: No

14 Floor 2 - Dining Area



Dimensions: 18'11" x 13'9"  
Area: 259 sq. ft  
Counted as living area: Yes

Heated: Yes  
Finished: Yes  
Enclosed: Yes  
Contiguous: Yes  
Permitted: Yes  
Wet space: No  
Addition: No  
Conversion: No

## Home data report

16554 Prospect Lane, Anthem Highlands, Broomfield,  
Broomfield County, Colorado, United States, 80023

### 15 Floor 2 - Living Room

---



Dimensions: 16'1" x 15'5"  
Area: 248 sq. ft  
Counted as living area: Yes

Heated: Yes  
Finished: Yes  
Enclosed: Yes  
Contiguous: Yes  
Permitted: Yes  
Wet space: No  
Addition: No  
Conversion: No

### 16 Floor 2 - Garage

---



Dimensions: 19'7" x 23'5"  
Area: 458 sq. ft  
Counted as living area: No

Heated: No  
Finished: No  
Enclosed: Yes  
Contiguous: Yes  
Permitted: Yes  
Wet space: No  
Addition: No  
Conversion: No

### 17 Floor 3 - Laundry

---



Dimensions: 8'4" x 7'8"  
Area: 64 sq. ft  
Counted as living area: Yes

Heated: Yes  
Finished: Yes  
Enclosed: Yes  
Contiguous: Yes  
Permitted: Yes  
Wet space: No  
Addition: No  
Conversion: No

16554 Prospect Lane, Anthem Highlands, Broomfield,  
Broomfield County, Colorado, United States, 80023

### 18 Floor 3 - Bath



Dimensions: 5'5" x 3'1"  
Area: 17 sq. ft  
Counted as living area: Yes

Heated: Yes  
Finished: Yes  
Enclosed: Yes  
Contiguous: Yes  
Permitted: Yes  
Wet space: Yes  
Addition: No  
Conversion: No

### 19 Floor 3 - Bedroom



Dimensions: 12'4" x 13'7"  
Area: 167 sq. ft  
Counted as living area: Yes

Heated: Yes  
Finished: Yes  
Enclosed: Yes  
Contiguous: Yes  
Permitted: Yes  
Wet space: No  
Addition: No  
Conversion: No

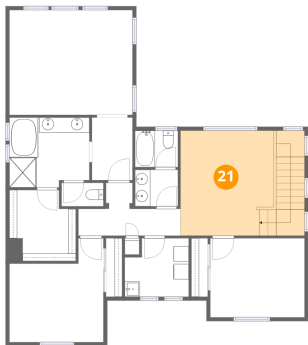
### 20 Floor 3 - Bedroom



Dimensions: 12'4" x 10'4"  
Area: 127 sq. ft  
Counted as living area: Yes

Heated: Yes  
Finished: Yes  
Enclosed: Yes  
Contiguous: Yes  
Permitted: Yes  
Wet space: No  
Addition: No  
Conversion: No

21 Floor 3 - Loft



Dimensions: 12'2" x 13'9"  
Area: 168 sq. ft  
Counted as living area: Yes

Heated: Yes  
Finished: Yes  
Enclosed: Yes  
Contiguous: Yes  
Permitted: Yes  
Wet space: No  
Addition: No  
Conversion: No

22 Floor 3 - Bath



Dimensions: 5'7" x 4'9"  
Area: 27 sq. ft  
Counted as living area: Yes

Heated: Yes  
Finished: Yes  
Enclosed: Yes  
Contiguous: Yes  
Permitted: Yes  
Wet space: Yes  
Addition: No  
Conversion: No

23 Floor 3 - Primary Bath



Dimensions: 10'6" x 9'2"  
Area: 96 sq. ft  
Counted as living area: Yes

Heated: Yes  
Finished: Yes  
Enclosed: Yes  
Contiguous: Yes  
Permitted: Yes  
Wet space: Yes  
Addition: No  
Conversion: No

16554 Prospect Lane, Anthem Highlands, Broomfield,  
Broomfield County, Colorado, United States, 80023

### 24 Floor 3 - Hall



Dimensions: 13'4" x 6'11"  
Area: 92 sq. ft  
Counted as living area: Yes

Heated: Yes  
Finished: Yes  
Enclosed: Yes  
Contiguous: Yes  
Permitted: Yes  
Wet space: No  
Addition: No  
Conversion: No

### 25 Floor 3 - Primary Bedroom



Dimensions: 16'1" x 13'8"  
Area: 220 sq. ft  
Counted as living area: Yes

Heated: Yes  
Finished: Yes  
Enclosed: Yes  
Contiguous: Yes  
Permitted: Yes  
Wet space: No  
Addition: No  
Conversion: No

### 26 Floor 3 - Bath



Dimensions: 5'7" x 4'9"  
Area: 27 sq. ft  
Counted as living area: Yes

Heated: Yes  
Finished: Yes  
Enclosed: Yes  
Contiguous: Yes  
Permitted: Yes  
Wet space: Yes  
Addition: No  
Conversion: No

27 Floor 3 - Hall



Dimensions: 5'4" x 8'2"  
Area: 44 sq. ft  
Counted as living area: Yes

Heated: Yes  
Finished: Yes  
Enclosed: Yes  
Contiguous: Yes  
Permitted: Yes  
Wet space: No  
Addition: No  
Conversion: No

28 Floor 3 - W.I.C.



Dimensions: 8'8" x 9'3"  
Area: 81 sq. ft  
Counted as living area: Yes

Heated: Yes  
Finished: Yes  
Enclosed: Yes  
Contiguous: Yes  
Permitted: Yes  
Wet space: No  
Addition: No  
Conversion: No