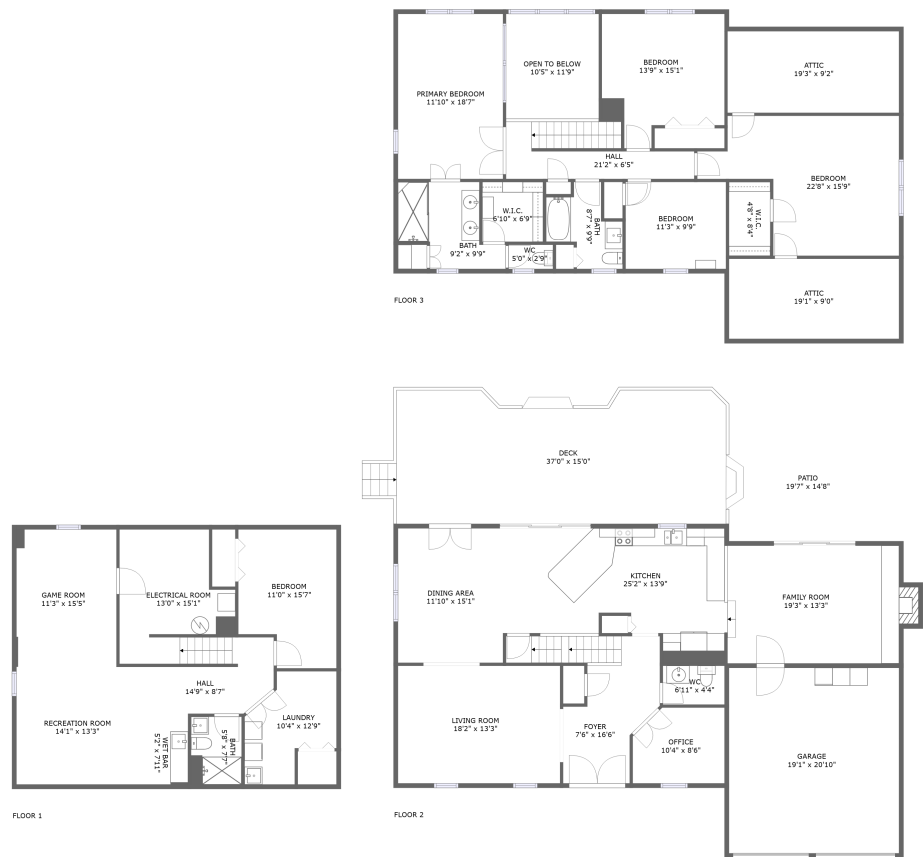




Home report


16017 Daven Pine Court, Willow Ridge, Darnestown,  
Gaithersburg, Montgomery County, Maryland, United States,





Property summary


 **1** Garages


 **5** Bedrooms

 **3** Bathrooms

 **1** Half baths

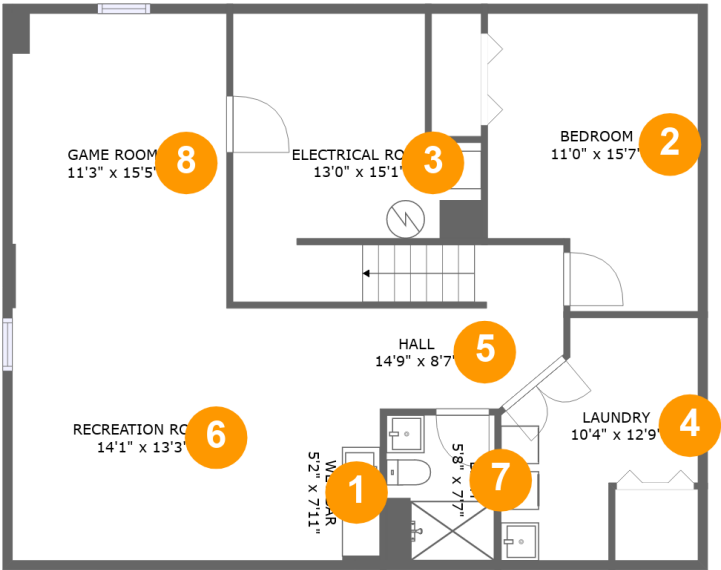
 **3** Floors

 **3,619** Gross living area sqft

 **5,512** Total sqft

Home report

16017 Daven Pine Court, Willow Ridge, Darnestown,  
Gaithersburg, Montgomery County, Maryland, United States,



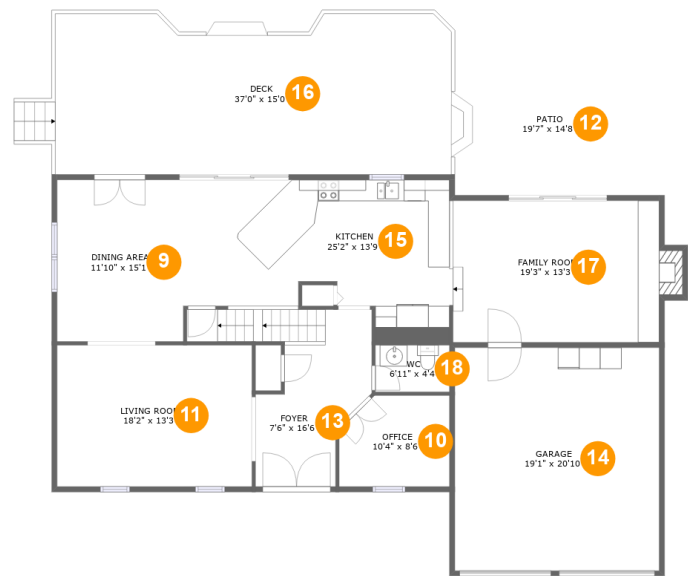
Room dimensions

Floor 1 Total sqft: 1095    Living area: 915

#		Max Dimensions	sqft	Included
1	Wet Bar	5'2" x 7'11"	41 sq. ft	Yes
2	Bedroom	11'0" x 15'7"	156 sq. ft	Yes
3	Electrical Room	13'0" x 15'1"	172 sq. ft	No
4	Laundry	10'4" x 12'9"	99 sq. ft	Yes
5	Hall	14'9" x 8'7"	88 sq. ft	Yes
6	Recreation Room	14'1" x 13'3"	187 sq. ft	Yes
7	Bath	5'8" x 7'7"	43 sq. ft	Yes
8	Game Room	11'3" x 15'5"	173 sq. ft	Yes

Home report

16017 Daven Pine Court, Willow Ridge, Darnestown,  
Gaithersburg, Montgomery County, Maryland, United States,



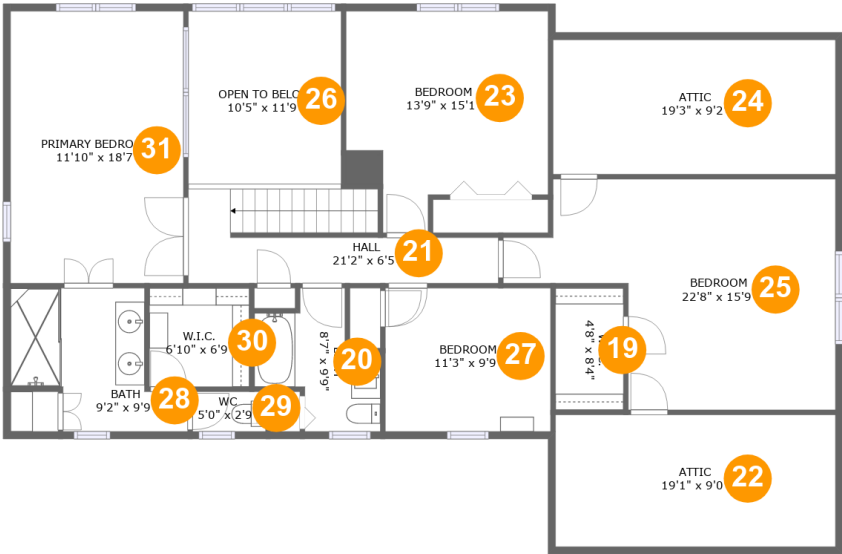
Room dimensions

Floor 2 Total sqft: 2600 Living area: 1396

#		Max Dimensions	sqft	Included
9	Dining Area	11'10" x 15'1"	178 sq. ft	Yes
10	Office	10'4" x 8'6"	82 sq. ft	Yes
11	Living Room	18'2" x 13'3"	241 sq. ft	Yes
12	Patio	19'7" x 14'8"	245 sq. ft	No
13	Foyer	7'6" x 16'6"	162 sq. ft	Yes
14	Garage	19'1" x 20'10"	398 sq. ft	No
15	Kitchen	25'2" x 13'9"	313 sq. ft	Yes
16	Deck	37'0" x 15'0"	526 sq. ft	No
17	Family Room	19'3" x 13'3"	264 sq. ft	Yes
18	WC	6'11" x 4'4"	30 sq. ft	Yes

Home report

16017 Daven Pine Court, Willow Ridge, Darnestown,  
Gaithersburg, Montgomery County, Maryland, United States,



Room dimensions

Floor 3Total sqft: 1817    Living area: 1308

#		Max Dimensions	sqft	Included
19	W.I.C.	4'8" x 8'4"	38 sq. ft	Yes
20	Bath	8'7" x 9'9"	57 sq. ft	Yes
21	Hall	21'2" x 6'5"	109 sq. ft	Yes
22	Attic	19'1" x 9'0"	172 sq. ft	No
23	Bedroom	13'9" x 15'1"	173 sq. ft	Yes
24	Attic	19'3" x 9'2"	177 sq. ft	No
25	Bedroom	22'8" x 15'9"	269 sq. ft	Yes
26	Open To Below	10'5" x 11'9"	123 sq. ft	No
27	Bedroom	11'3" x 9'9"	110 sq. ft	Yes
28	Bath	9'2" x 9'9"	86 sq. ft	Yes
29	WC	5'0" x 2'9"	14 sq. ft	Yes

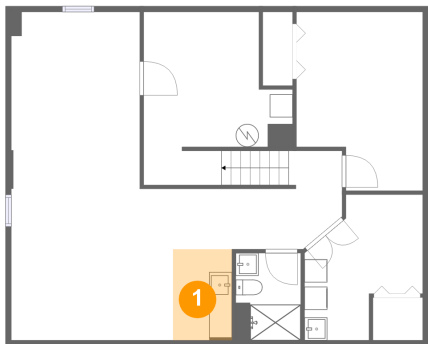
Home report

16017 Daven Pine Court, Willow Ridge, Darnestown,  
Gaithersburg, Montgomery County, Maryland, United States,

#		Max Dimensions	sqft	Included
30	W.I.C.	6'10" x 6'9"	46 sq. ft	Yes
31	Primary Bedroom	11'10" x 18'7"	219 sq. ft	Yes

16017 Daven Pine Court, Willow Ridge, Darnestown,  
Gaithersburg, Montgomery County, Maryland, United States,

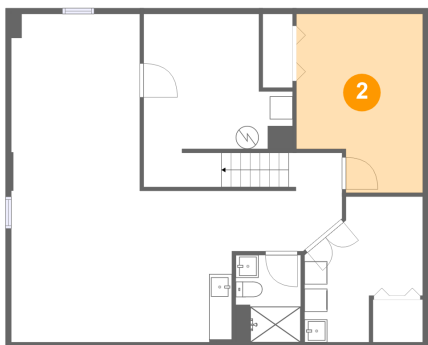
1 Floor 1 - Wet Bar



Max Dimensions: 5'2" x 7'11"  
Calculated Area: 41 sq. ft  
Included: Yes

Heated: Yes  
Finished: Yes  
Enclosed: Yes  
Contiguous: Yes  
Permitted: Yes  
Wet space: No  
Addition: No  
Conversion: No

2 Floor 1 - Bedroom

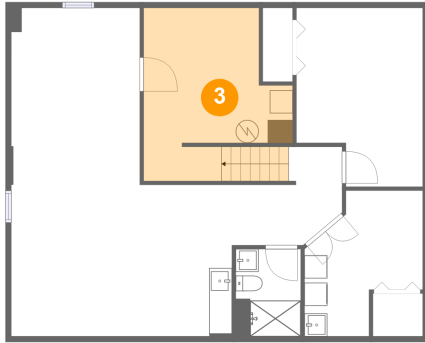


Max Dimensions: 11'0" x 15'7"  
Calculated Area: 156 sq. ft  
Included: Yes

Heated: Yes  
Finished: Yes  
Enclosed: Yes  
Contiguous: Yes  
Permitted: Yes  
Wet space: No  
Addition: No  
Conversion: No

16017 Daven Pine Court, Willow Ridge, Darnestown,  
Gaithersburg, Montgomery County, Maryland, United States,

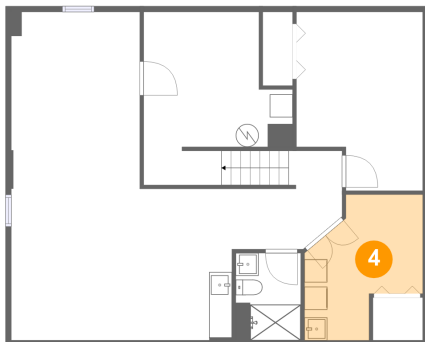
### 3 Floor 1 - Electrical Room



Max Dimensions: 13'0" x 15'1"  
Calculated Area: 172 sq. ft  
Included: No

Heated: No  
Finished: No  
Enclosed: Yes  
Contiguous: Yes  
Permitted: Yes  
Wet space: No  
Addition: No  
Conversion: No

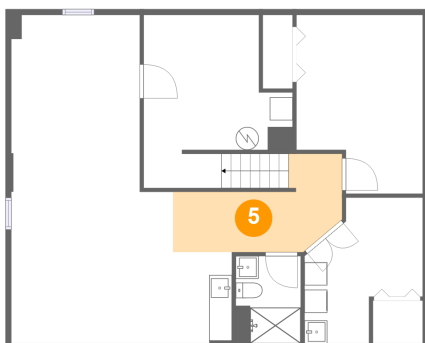
### 4 Floor 1 - Laundry



Max Dimensions: 10'4" x 12'9"  
Calculated Area: 99 sq. ft  
Included: Yes

Heated: Yes  
Finished: Yes  
Enclosed: Yes  
Contiguous: Yes  
Permitted: Yes  
Wet space: No  
Addition: No  
Conversion: No

### 5 Floor 1 - Hall

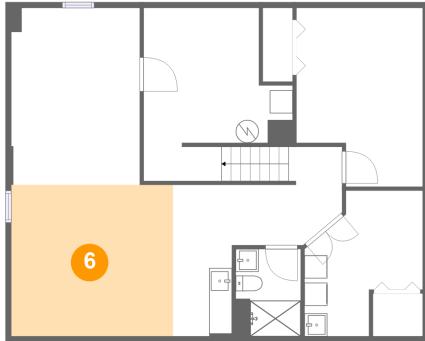


Max Dimensions: 14'9" x 8'7"  
Calculated Area: 88 sq. ft  
Included: Yes

Heated: Yes  
Finished: Yes  
Enclosed: Yes  
Contiguous: Yes  
Permitted: Yes  
Wet space: No  
Addition: No  
Conversion: No

16017 Daven Pine Court, Willow Ridge, Darnestown,  
Gaithersburg, Montgomery County, Maryland, United States,

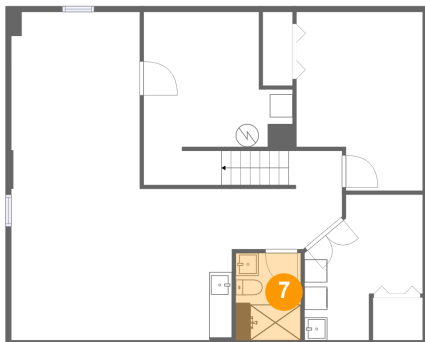
## 6 Floor 1 - Recreation Room



Max Dimensions: 14'1" x 13'3"  
Calculated Area: 187 sq. ft  
Included: Yes

Heated: Yes  
Finished: Yes  
Enclosed: Yes  
Contiguous: Yes  
Permitted: Yes  
Wet space: No  
Addition: No  
Conversion: No

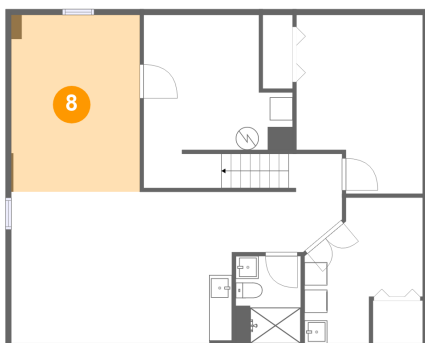
## 7 Floor 1 - Bath



Max Dimensions: 5'8" x 7'7"  
Calculated Area: 43 sq. ft  
Included: Yes

Heated: Yes  
Finished: Yes  
Enclosed: Yes  
Contiguous: Yes  
Permitted: Yes  
Wet space: Yes  
Addition: No  
Conversion: No

## 8 Floor 1 - Game Room

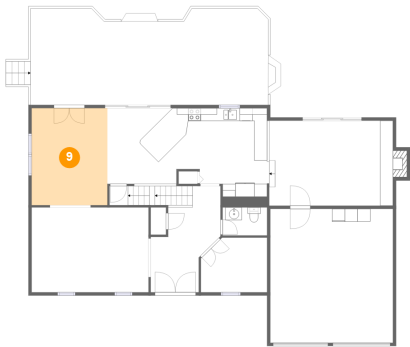


Max Dimensions: 11'3" x 15'5"  
Calculated Area: 173 sq. ft  
Included: Yes

Heated: Yes  
Finished: Yes  
Enclosed: Yes  
Contiguous: Yes  
Permitted: Yes  
Wet space: No  
Addition: No  
Conversion: No

16017 Daven Pine Court, Willow Ridge, Darnestown,  
Gaithersburg, Montgomery County, Maryland, United States,

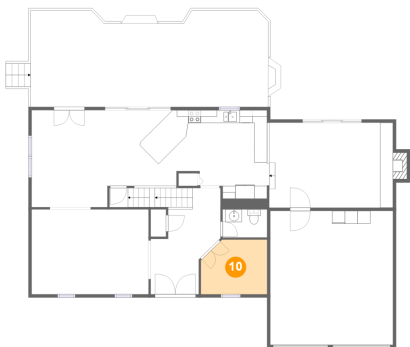
9 Floor 2 - Dining Area



Max Dimensions: 11'10" x 15'1"  
Calculated Area: 178 sq. ft  
Included: Yes

Heated: Yes  
Finished: Yes  
Enclosed: Yes  
Contiguous: Yes  
Permitted: Yes  
Wet space: No  
Addition: No  
Conversion: No

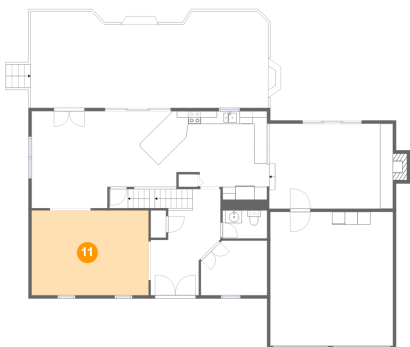
10 Floor 2 - Office



Max Dimensions: 10'4" x 8'6"  
Calculated Area: 82 sq. ft  
Included: Yes

Heated: Yes  
Finished: Yes  
Enclosed: Yes  
Contiguous: Yes  
Permitted: Yes  
Wet space: No  
Addition: No  
Conversion: No

11 Floor 2 - Living Room

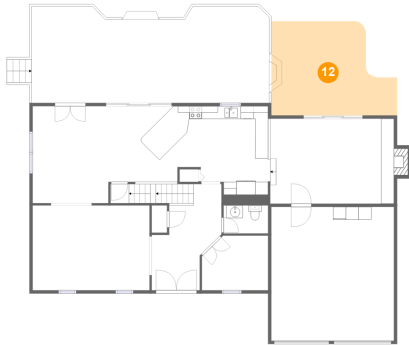


Max Dimensions: 18'2" x 13'3"  
Calculated Area: 241 sq. ft  
Included: Yes

Heated: Yes  
Finished: Yes  
Enclosed: Yes  
Contiguous: Yes  
Permitted: Yes  
Wet space: No  
Addition: No  
Conversion: No

16017 Daven Pine Court, Willow Ridge, Darnestown,  
Gaithersburg, Montgomery County, Maryland, United States,

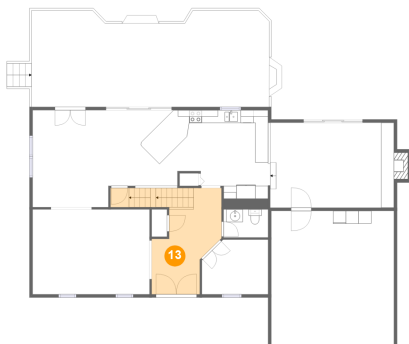
## 12 Floor 2 - Patio



Max Dimensions: 19'7" x 14'8"  
Calculated Area: 245 sq. ft  
Included: No

Heated: No  
Finished: Yes  
Enclosed: No  
Contiguous: Yes  
Permitted: Yes  
Wet space: No  
Addition: No  
Conversion: No

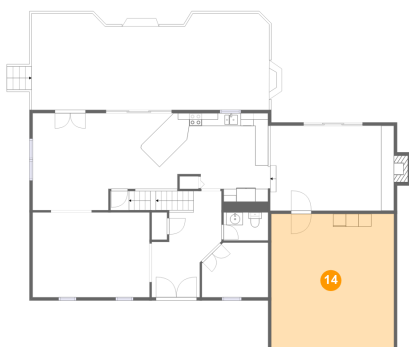
## 13 Floor 2 - Foyer



Max Dimensions: 7'6" x 16'6"  
Calculated Area: 162 sq. ft  
Included: Yes

Heated: Yes  
Finished: Yes  
Enclosed: Yes  
Contiguous: Yes  
Permitted: Yes  
Wet space: No  
Addition: No  
Conversion: No

## 14 Floor 2 - Garage

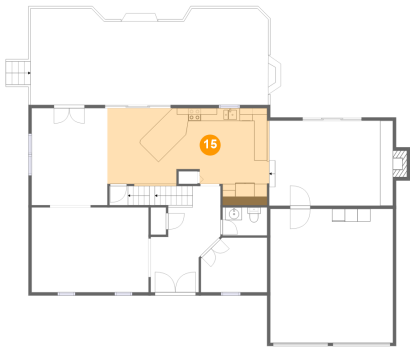


Max Dimensions: 19'1" x 20'10"  
Calculated Area: 398 sq. ft  
Included: No

Heated: No  
Finished: No  
Enclosed: Yes  
Contiguous: Yes  
Permitted: Yes  
Wet space: No  
Addition: No  
Conversion: No

16017 Daven Pine Court, Willow Ridge, Darnestown,  
Gaithersburg, Montgomery County, Maryland, United States,

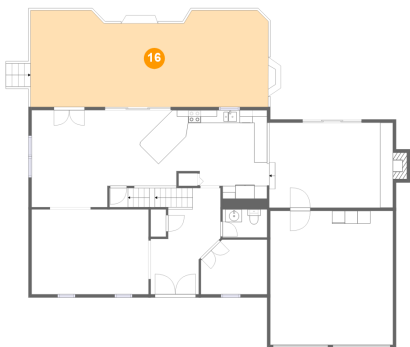
15 Floor 2 - Kitchen



Max Dimensions: 25'2" x 13'9"  
Calculated Area: 313 sq. ft  
Included: Yes

Heated: Yes  
Finished: Yes  
Enclosed: Yes  
Contiguous: Yes  
Permitted: Yes  
Wet space: No  
Addition: No  
Conversion: No

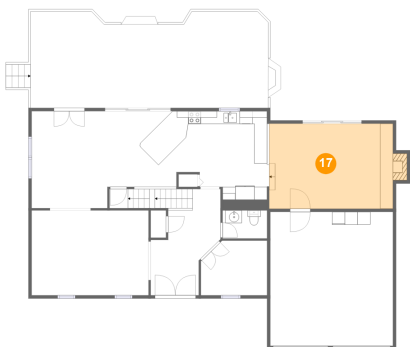
16 Floor 2 - Deck



Max Dimensions: 37'0" x 15'0"  
Calculated Area: 526 sq. ft  
Included: No

Heated: No  
Finished: Yes  
Enclosed: No  
Contiguous: Yes  
Permitted: Yes  
Wet space: No  
Addition: No  
Conversion: No

17 Floor 2 - Family Room



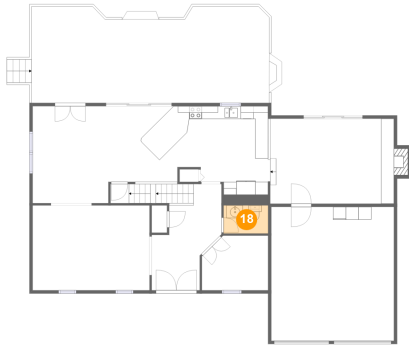
Max Dimensions: 19'3" x 13'3"  
Calculated Area: 264 sq. ft  
Included: Yes

Heated: Yes  
Finished: Yes  
Enclosed: Yes  
Contiguous: Yes  
Permitted: Yes  
Wet space: No  
Addition: No  
Conversion: No

## Home report

16017 Daven Pine Court, Willow Ridge, Darnestown,  
Gaithersburg, Montgomery County, Maryland, United States,

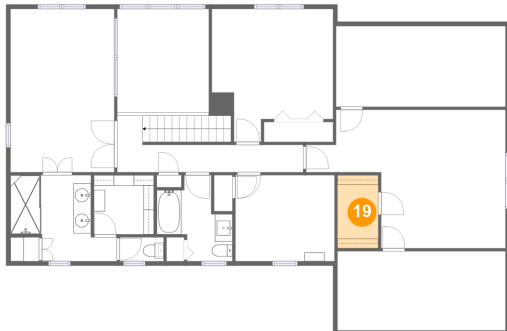
### 18 Floor 2 - WC



Max Dimensions: 6'11" x 4'4"  
Calculated Area: 30 sq. ft  
Included: Yes

Heated: Yes  
Finished: Yes  
Enclosed: Yes  
Contiguous: Yes  
Permitted: Yes  
Wet space: Yes  
Addition: No  
Conversion: No

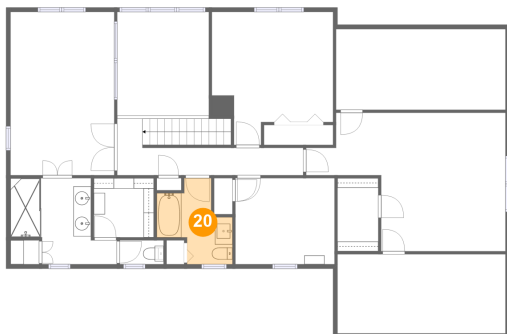
### 19 Floor 3 - W.I.C.



Max Dimensions: 4'8" x 8'4"  
Calculated Area: 38 sq. ft  
Included: Yes

Heated: Yes  
Finished: Yes  
Enclosed: Yes  
Contiguous: Yes  
Permitted: Yes  
Wet space: No  
Addition: No  
Conversion: No

### 20 Floor 3 - Bath



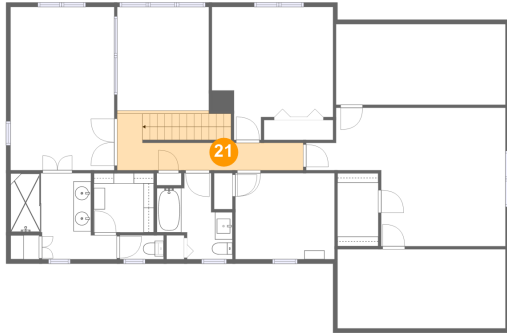
Max Dimensions: 8'7" x 9'9"  
Calculated Area: 57 sq. ft  
Included: Yes

Heated: Yes  
Finished: Yes  
Enclosed: Yes  
Contiguous: Yes  
Permitted: Yes  
Wet space: Yes  
Addition: No  
Conversion: No

## Home report

16017 Daven Pine Court, Willow Ridge, Darnestown,  
Gaithersburg, Montgomery County, Maryland, United States,

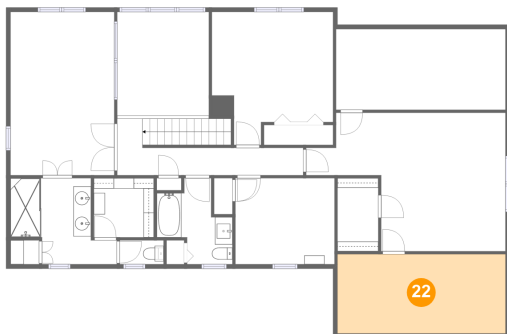
### 21 Floor 3 - Hall



Max Dimensions: 21'2" x 6'5"  
Calculated Area: 109 sq. ft  
Included: Yes

Heated: Yes  
Finished: Yes  
Enclosed: Yes  
Contiguous: Yes  
Permitted: Yes  
Wet space: No  
Addition: No  
Conversion: No

### 22 Floor 3 - Attic



Max Dimensions: 19'1" x 9'0"  
Calculated Area: 172 sq. ft  
Included: No

Heated: No  
Finished: No  
Enclosed: Yes  
Contiguous: Yes  
Permitted: Yes  
Wet space: No  
Addition: No  
Conversion: No

### 23 Floor 3 - Bedroom



Max Dimensions: 13'9" x 15'1"  
Calculated Area: 173 sq. ft  
Included: Yes

Heated: Yes  
Finished: Yes  
Enclosed: Yes  
Contiguous: Yes  
Permitted: Yes  
Wet space: No  
Addition: No  
Conversion: No

## Home report

16017 Daven Pine Court, Willow Ridge, Darnestown,  
Gaithersburg, Montgomery County, Maryland, United States,

### 24 Floor 3 - Attic



Max Dimensions: 19'3" x 9'2"  
Calculated Area: 177 sq. ft  
Included: No

Heated: No  
Finished: No  
Enclosed: Yes  
Contiguous: Yes  
Permitted: Yes  
Wet space: No  
Addition: No  
Conversion: No

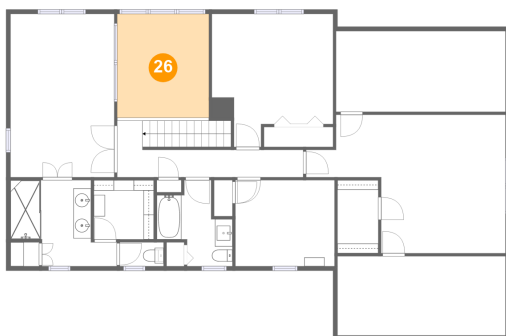
### 25 Floor 3 - Bedroom



Max Dimensions: 22'8" x 15'9"  
Calculated Area: 269 sq. ft  
Included: Yes

Heated: Yes  
Finished: Yes  
Enclosed: Yes  
Contiguous: Yes  
Permitted: Yes  
Wet space: No  
Addition: No  
Conversion: No

### 26 Floor 3 - Open To Below



Max Dimensions: 10'5" x 11'9"  
Calculated Area: 123 sq. ft  
Included: No

Heated: No  
Finished: No  
Enclosed: No  
Contiguous: Yes  
Permitted: No  
Wet space: No  
Addition: No  
Conversion: No

## Home report

16017 Daven Pine Court, Willow Ridge, Darnestown,  
Gaithersburg, Montgomery County, Maryland, United States,

### 27 Floor 3 - Bedroom



Max Dimensions: 11'3" x 9'9"  
Calculated Area: 110 sq. ft  
Included: Yes

Heated: Yes  
Finished: Yes  
Enclosed: Yes  
Contiguous: Yes  
Permitted: Yes  
Wet space: No  
Addition: No  
Conversion: No

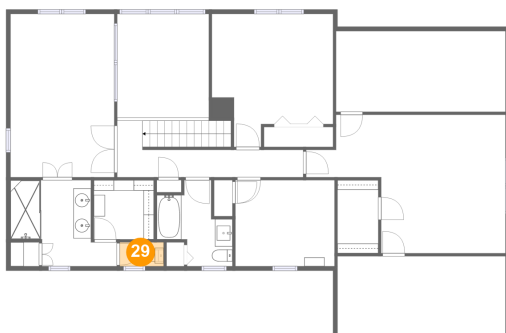
### 28 Floor 3 - Bath



Max Dimensions: 9'2" x 9'9"  
Calculated Area: 86 sq. ft  
Included: Yes

Heated: Yes  
Finished: Yes  
Enclosed: Yes  
Contiguous: Yes  
Permitted: Yes  
Wet space: Yes  
Addition: No  
Conversion: No

### 29 Floor 3 - WC

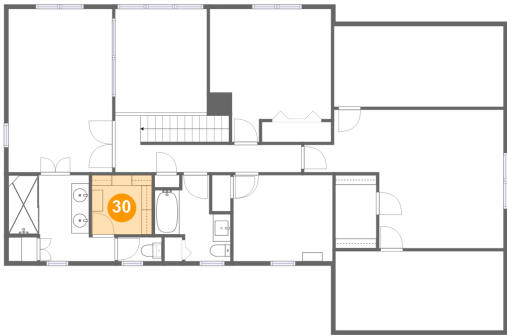


Max Dimensions: 5'0" x 2'9"  
Calculated Area: 14 sq. ft  
Included: Yes

Heated: Yes  
Finished: Yes  
Enclosed: Yes  
Contiguous: Yes  
Permitted: Yes  
Wet space: Yes  
Addition: No  
Conversion: No

16017 Daven Pine Court, Willow Ridge, Darnestown,  
Gaithersburg, Montgomery County, Maryland, United States,

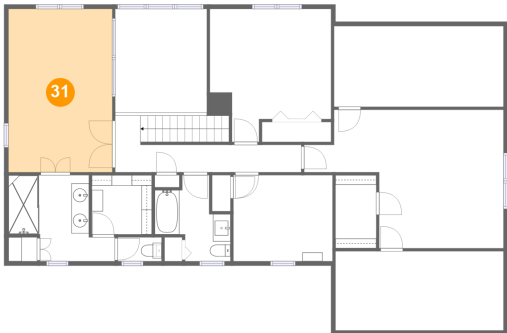
30 Floor 3 - W.I.C.



Max Dimensions: 6'10" x 6'9"  
Calculated Area: 46 sq. ft  
Included: Yes

Heated: Yes  
Finished: Yes  
Enclosed: Yes  
Contiguous: Yes  
Permitted: Yes  
Wet space: No  
Addition: No  
Conversion: No

31 Floor 3 - Primary Bedroom



Max Dimensions: 11'10" x 18'7"  
Calculated Area: 219 sq. ft  
Included: Yes

Heated: Yes  
Finished: Yes  
Enclosed: Yes  
Contiguous: Yes  
Permitted: Yes  
Wet space: No  
Addition: No  
Conversion: No