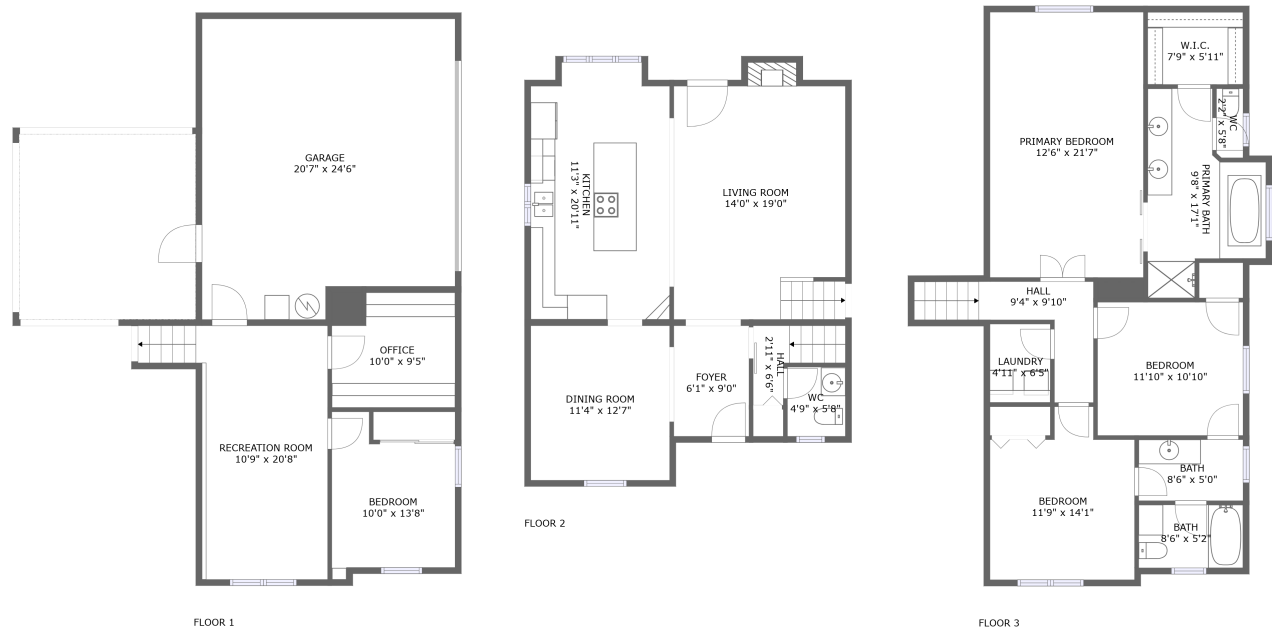




Home report


1498 Cathlamet Court Northwest, West Salem, Salem, Polk  
County, Oregon, United States, 97304





Property summary


 **1** Garages


 **4** Bedrooms

 **2** Bathrooms

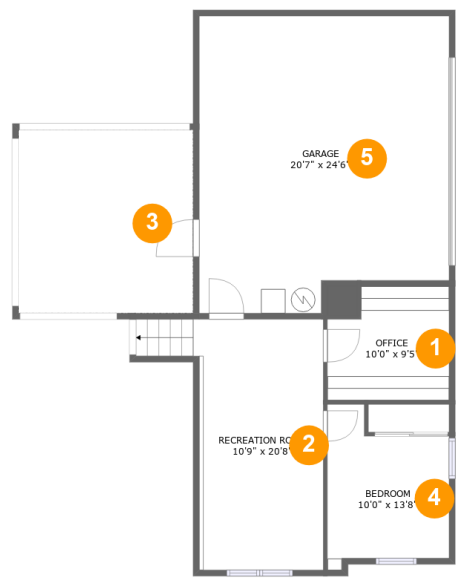
 **1** Half baths

 **3** Floors

 **2,407** Gross living area sqft

 **3,165** Total sqft

1498 Cathlamet Court Northwest, West Salem, Salem, Polk  
County, Oregon, United States, 97304

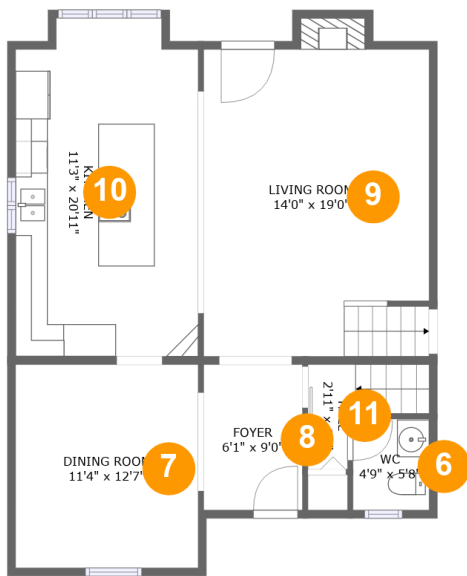


Room dimensions

Floor 1 Total sqft: 1258    Living area: 510

#		Max Dimensions	sqft	Included
1	Office	10'0" x 9'5"	87 sq. ft	Yes
2	Recreation Room	10'9" x 20'8"	227 sq. ft	Yes
3	Crawl Space	14'5" x 15'1"	218 sq. ft	No
4	Bedroom	10'0" x 13'8"	110 sq. ft	Yes
5	Garage	20'7" x 24'6"	476 sq. ft	No

1498 Cathlamet Court Northwest, West Salem, Salem, Polk  
County, Oregon, United States, 97304

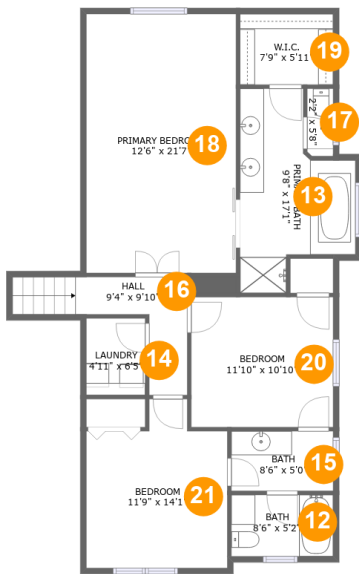


Room dimensions

Floor 2 Total sqft: 854    Living area: 844

#		Max Dimensions	sqft	Included
6	WC	4'9" x 5'8"	27 sq. ft	Yes
7	Dining Room	11'4" x 12'7"	142 sq. ft	Yes
8	Foyer	6'1" x 9'0"	55 sq. ft	Yes
9	Living Room	14'0" x 19'0"	272 sq. ft	Yes
10	Kitchen	11'3" x 20'11"	227 sq. ft	Yes
11	Hall	2'11" x 6'6"	31 sq. ft	Yes

1498 Cathlamet Court Northwest, West Salem, Salem, Polk  
County, Oregon, United States, 97304



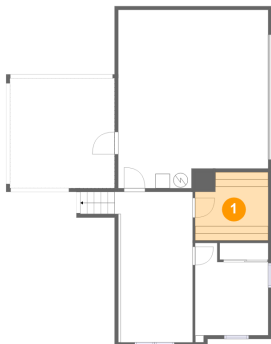
Room dimensions

Floor 3 Total sqft: 1053    Living area: 1053

#		Max Dimensions	sqft	Included
12	Bath	8'6" x 5'2"	44 sq. ft	Yes
13	Primary Bath	9'8" x 17'1"	120 sq. ft	Yes
14	Laundry	4'11" x 6'5"	31 sq. ft	Yes
15	Bath	8'6" x 5'0"	42 sq. ft	Yes
16	Hall	9'4" x 9'10"	67 sq. ft	Yes
17	WC	2'2" x 5'8"	12 sq. ft	Yes
18	Primary Bedroom	12'6" x 21'7"	270 sq. ft	Yes
19	W.I.C.	7'9" x 5'11"	46 sq. ft	Yes
20	Bedroom	11'10" x 10'10"	129 sq. ft	Yes
21	Bedroom	11'9" x 14'1"	143 sq. ft	Yes

1498 Cathlamet Court Northwest, West Salem, Salem, Polk  
County, Oregon, United States, 97304

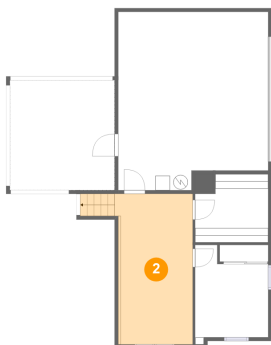
1 Floor 1 - Office



Max Dimensions: 10'0" x 9'5"  
Calculated Area: 87 sq. ft  
Included: Yes

Heated: Yes  
Finished: Yes  
Enclosed: Yes  
Contiguous: Yes  
Permitted: Yes  
Wet space: No  
Addition: No  
Conversion: No

2 Floor 1 - Recreation Room

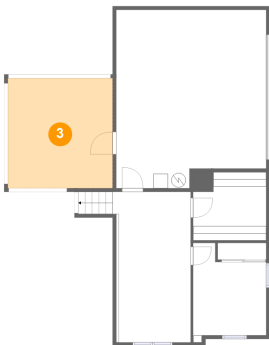


Max Dimensions: 10'9" x 20'8"  
Calculated Area: 227 sq. ft  
Included: Yes

Heated: Yes  
Finished: Yes  
Enclosed: Yes  
Contiguous: Yes  
Permitted: Yes  
Wet space: No  
Addition: No  
Conversion: No

1498 Cathlamet Court Northwest, West Salem, Salem, Polk  
County, Oregon, United States, 97304

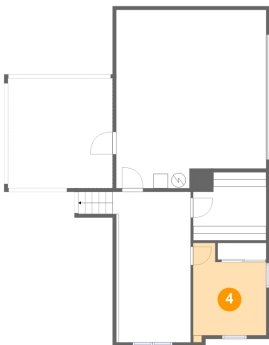
3 Floor 1 - Crawl Space



Max Dimensions: 14'5" x 15'1"  
Calculated Area: 218 sq. ft  
Included: No

Heated: No  
Finished: No  
Enclosed: No  
Contiguous: Yes  
Permitted: No  
Wet space: No  
Addition: No  
Conversion: No

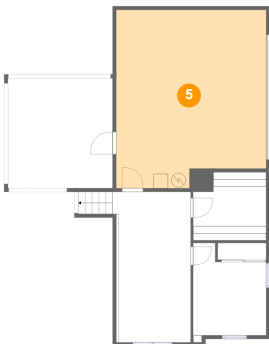
4 Floor 1 - Bedroom



Max Dimensions: 10'0" x 13'8"  
Calculated Area: 110 sq. ft  
Included: Yes

Heated: Yes  
Finished: Yes  
Enclosed: Yes  
Contiguous: Yes  
Permitted: Yes  
Wet space: No  
Addition: No  
Conversion: No

5 Floor 1 - Garage

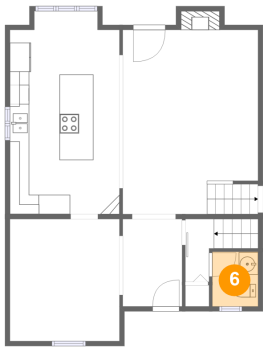


Max Dimensions: 20'7" x 24'6"  
Calculated Area: 476 sq. ft  
Included: No

Heated: No  
Finished: No  
Enclosed: Yes  
Contiguous: Yes  
Permitted: Yes  
Wet space: No  
Addition: No  
Conversion: No

1498 Cathlamet Court Northwest, West Salem, Salem, Polk  
County, Oregon, United States, 97304

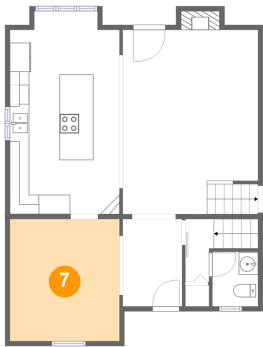
6 Floor 2 - WC



Max Dimensions: 4'9" x 5'8"  
Calculated Area: 27 sq. ft  
Included: Yes

Heated: Yes  
Finished: Yes  
Enclosed: Yes  
Contiguous: Yes  
Permitted: Yes  
Wet space: Yes  
Addition: No  
Conversion: No

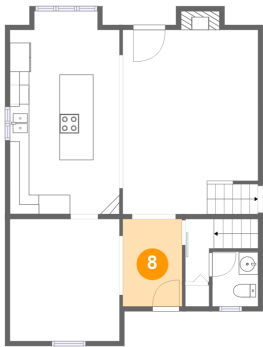
7 Floor 2 - Dining Room



Max Dimensions: 11'4" x 12'7"  
Calculated Area: 142 sq. ft  
Included: Yes

Heated: Yes  
Finished: Yes  
Enclosed: Yes  
Contiguous: Yes  
Permitted: Yes  
Wet space: No  
Addition: No  
Conversion: No

8 Floor 2 - Foyer

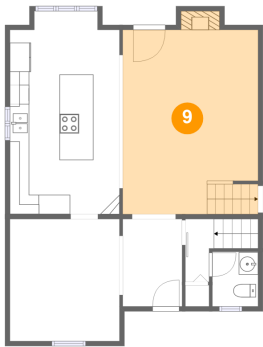


Max Dimensions: 6'1" x 9'0"  
Calculated Area: 55 sq. ft  
Included: Yes

Heated: Yes  
Finished: Yes  
Enclosed: Yes  
Contiguous: Yes  
Permitted: Yes  
Wet space: No  
Addition: No  
Conversion: No

1498 Cathlamet Court Northwest, West Salem, Salem, Polk  
County, Oregon, United States, 97304

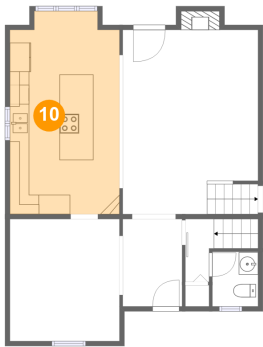
9 Floor 2 - Living Room



Max Dimensions: 14'0" x 19'0"  
Calculated Area: 272 sq. ft  
Included: Yes

Heated: Yes  
Finished: Yes  
Enclosed: Yes  
Contiguous: Yes  
Permitted: Yes  
Wet space: No  
Addition: No  
Conversion: No

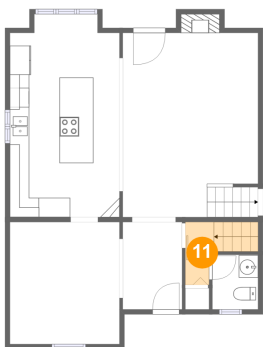
10 Floor 2 - Kitchen



Max Dimensions: 11'3" x 20'11"  
Calculated Area: 227 sq. ft  
Included: Yes

Heated: Yes  
Finished: Yes  
Enclosed: Yes  
Contiguous: Yes  
Permitted: Yes  
Wet space: No  
Addition: No  
Conversion: No

11 Floor 2 - Hall



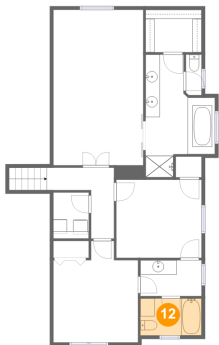
Max Dimensions: 2'11" x 6'6"  
Calculated Area: 31 sq. ft  
Included: Yes

Heated: Yes  
Finished: Yes  
Enclosed: Yes  
Contiguous: Yes  
Permitted: Yes  
Wet space: No  
Addition: No  
Conversion: No



1498 Cathlamet Court Northwest, West Salem, Salem, Polk  
County, Oregon, United States, 97304

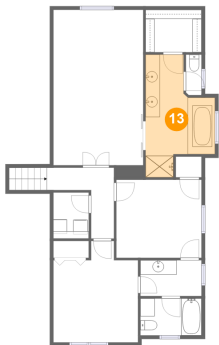
12 Floor 3 - Bath



Max Dimensions: 8'6" x 5'2"  
Calculated Area: 44 sq. ft  
Included: Yes

Heated: Yes  
Finished: Yes  
Enclosed: Yes  
Contiguous: Yes  
Permitted: Yes  
Wet space: Yes  
Addition: No  
Conversion: No

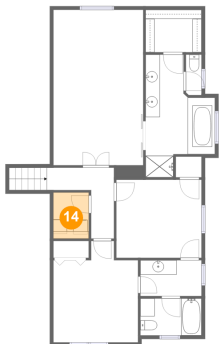
13 Floor 3 - Primary Bath



Max Dimensions: 9'8" x 17'1"  
Calculated Area: 120 sq. ft  
Included: Yes

Heated: Yes  
Finished: Yes  
Enclosed: Yes  
Contiguous: Yes  
Permitted: Yes  
Wet space: Yes  
Addition: No  
Conversion: No

14 Floor 3 - Laundry

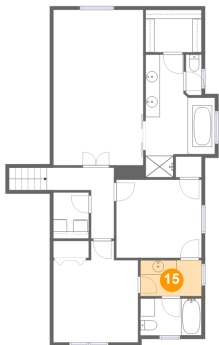


Max Dimensions: 4'11" x 6'5"  
Calculated Area: 31 sq. ft  
Included: Yes

Heated: Yes  
Finished: Yes  
Enclosed: Yes  
Contiguous: Yes  
Permitted: Yes  
Wet space: No  
Addition: No  
Conversion: No

1498 Cathlamet Court Northwest, West Salem, Salem, Polk  
County, Oregon, United States, 97304

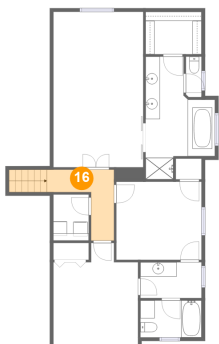
15 Floor 3 - Bath



Max Dimensions: 8'6" x 5'0"  
Calculated Area: 42 sq. ft  
Included: Yes

Heated: Yes  
Finished: Yes  
Enclosed: Yes  
Contiguous: Yes  
Permitted: Yes  
Wet space: Yes  
Addition: No  
Conversion: No

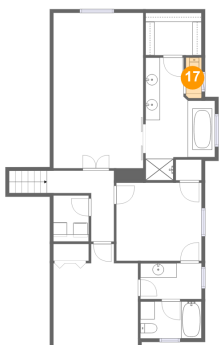
16 Floor 3 - Hall



Max Dimensions: 9'4" x 9'10"  
Calculated Area: 67 sq. ft  
Included: Yes

Heated: Yes  
Finished: Yes  
Enclosed: Yes  
Contiguous: Yes  
Permitted: Yes  
Wet space: No  
Addition: No  
Conversion: No

17 Floor 3 - WC

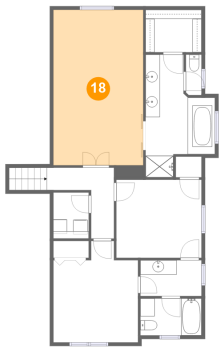


Max Dimensions: 2'2" x 5'8"  
Calculated Area: 12 sq. ft  
Included: Yes

Heated: Yes  
Finished: Yes  
Enclosed: Yes  
Contiguous: Yes  
Permitted: Yes  
Wet space: Yes  
Addition: No  
Conversion: No

1498 Cathlamet Court Northwest, West Salem, Salem, Polk  
County, Oregon, United States, 97304

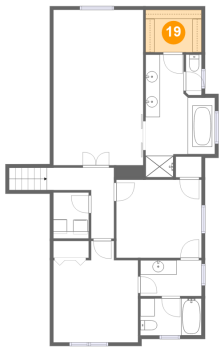
18 Floor 3 - Primary Bedroom



Max Dimensions: 12'6" x 21'7"  
Calculated Area: 270 sq. ft  
Included: Yes

Heated: Yes  
Finished: Yes  
Enclosed: Yes  
Contiguous: Yes  
Permitted: Yes  
Wet space: No  
Addition: No  
Conversion: No

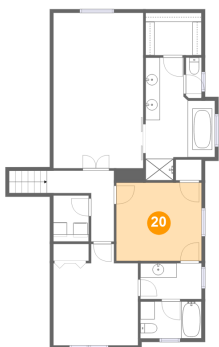
19 Floor 3 - W.I.C.



Max Dimensions: 7'9" x 5'11"  
Calculated Area: 46 sq. ft  
Included: Yes

Heated: Yes  
Finished: Yes  
Enclosed: Yes  
Contiguous: Yes  
Permitted: Yes  
Wet space: No  
Addition: No  
Conversion: No

20 Floor 3 - Bedroom

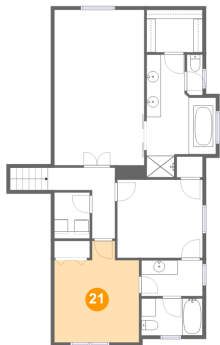


Max Dimensions: 11'10" x 10'10"  
Calculated Area: 129 sq. ft  
Included: Yes

Heated: Yes  
Finished: Yes  
Enclosed: Yes  
Contiguous: Yes  
Permitted: Yes  
Wet space: No  
Addition: No  
Conversion: No

1498 Cathlamet Court Northwest, West Salem, Salem, Polk  
County, Oregon, United States, 97304

**21** Floor 3 - Bedroom



Max Dimensions: 11'9" x 14'1"  
Calculated Area: 143 sq. ft  
Included: Yes

Heated: Yes  
Finished: Yes  
Enclosed: Yes  
Contiguous: Yes  
Permitted: Yes  
Wet space: No  
Addition: No  
Conversion: No