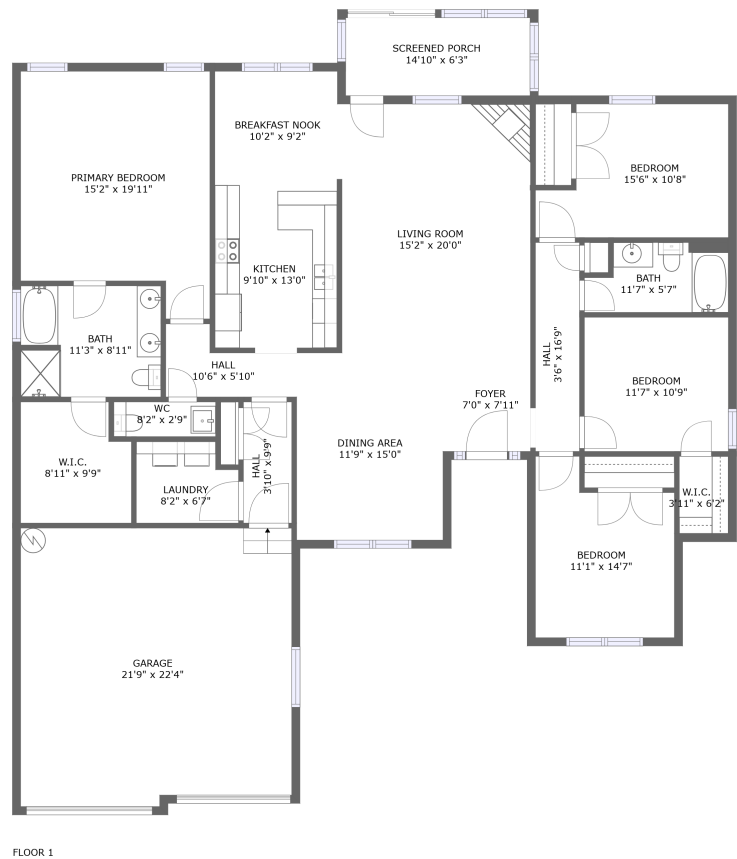


Home report

625 Avalon Drive, Hartselle, Morgan County, Alabama, United States, 35640




Total Area: 2197 sq. ft


Floor 1: 2197 sq. ft

Excluded: Garage 521 sq. ft, Outdoor Porch Screen 110 sq. ft

Property summary

 1 Floors

 4 Bedrooms

 2 Bathrooms

Home report

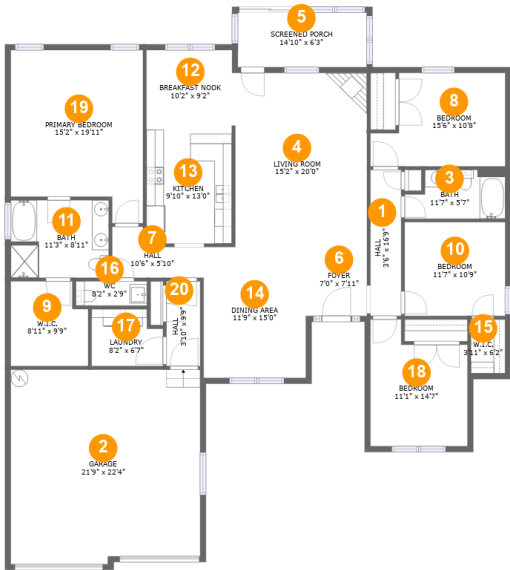
625 Avalon Drive, Hartselle, Morgan County, Alabama, United States, 35640

 **1**  
Half baths

 **1**  
Garages

Home report

625 Avalon Drive, Hartselle, Morgan County, Alabama, United States, 35640



Room dimensions

Floor 1

Total:2197sqft   Excluded: 631sqft

#		Max Dimensions	sqft	Included
1	Hall	3'6" x 16'9"	59 sq. ft	Yes
2	Garage	21'9" x 22'4"	476 sq. ft	No
3	Bath	11'7" x 5'7"	58 sq. ft	Yes
4	Living Room	15'2" x 20'0"	302 sq. ft	Yes
5	Screened Porch	14'10" x 6'3"	93 sq. ft	No
6	Foyer	7'0" x 7'11"	56 sq. ft	Yes
7	Hall	10'6" x 5'10"	45 sq. ft	Yes
8	Bedroom	15'6" x 10'8"	143 sq. ft	Yes
9	W.I.C.	8'11" x 9'9"	81 sq. ft	Yes
10	Bedroom	11'7" x 10'9"	124 sq. ft	Yes
11	Bath	11'3" x 8'11"	99 sq. ft	Yes

## Home report

**625 Avalon Drive, Hartselle, Morgan County, Alabama, United States, 35640**

#		Max Dimensions	sqft	Included
12	Breakfast Nook	10'2" x 9'2"	92 sq. ft	Yes
13	Kitchen	9'10" x 13'0"	128 sq. ft	Yes
14	Dining Area	11'9" x 15'0"	176 sq. ft	Yes
15	W.I.C.	3'11" x 6'2"	24 sq. ft	Yes
16	WC	8'2" x 2'9"	23 sq. ft	Yes
17	Laundry	8'2" x 6'7"	49 sq. ft	Yes
18	Bedroom	11'1" x 14'7"	140 sq. ft	Yes
19	Primary Bedroom	15'2" x 19'11"	266 sq. ft	Yes
20	Hall	3'10" x 9'9"	38 sq. ft	Yes

625 Avalon Drive, Hartselle, Morgan County, Alabama, United States, 35640

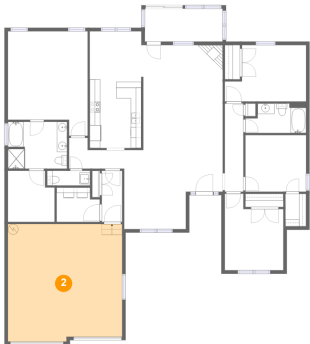
1 Floor 1 - Hall



Max Dimensions: 3'6" x 16'9"  
Calculated Area: 59 sq. ft  
Included: Yes

Heated: Yes  
Finished: Yes  
Enclosed: Yes  
Contiguous: Yes  
Permitted: Yes  
Wet space: No  
Addition: No  
Conversion: No

2 Floor 1 - Garage



Max Dimensions: 21'9" x 22'4"  
Calculated Area: 476 sq. ft  
Included: No

Heated: No  
Finished: No  
Enclosed: Yes  
Contiguous: Yes  
Permitted: Yes  
Wet space: No  
Addition: No  
Conversion: No

625 Avalon Drive, Hartselle, Morgan County, Alabama, United States, 35640

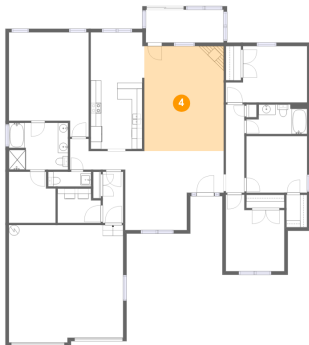
### 3 Floor 1 - Bath



Max Dimensions: 11'7" x 5'7"  
Calculated Area: 58 sq. ft  
Included: Yes

Heated: Yes  
Finished: Yes  
Enclosed: Yes  
Contiguous: Yes  
Permitted: Yes  
Wet space: Yes  
Addition: No  
Conversion: No

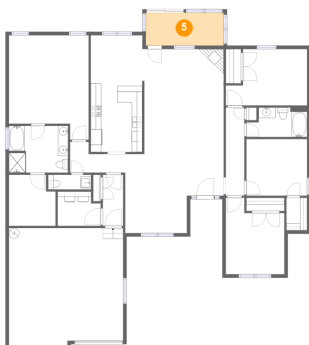
### 4 Floor 1 - Living Room



Max Dimensions: 15'2" x 20'0"  
Calculated Area: 302 sq. ft  
Included: Yes

Heated: Yes  
Finished: Yes  
Enclosed: Yes  
Contiguous: Yes  
Permitted: Yes  
Wet space: No  
Addition: No  
Conversion: No

### 5 Floor 1 - Screened Porch

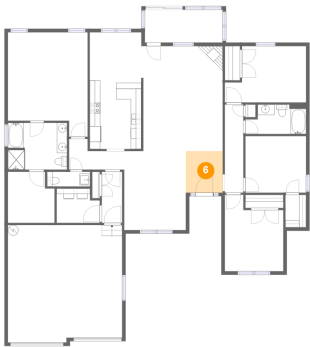


Max Dimensions: 14'10" x 6'3"  
Calculated Area: 93 sq. ft  
Included: No

Heated: No  
Finished: Yes  
Enclosed: No  
Contiguous: Yes  
Permitted: Yes  
Wet space: No  
Addition: No  
Conversion: No

625 Avalon Drive, Hartselle, Morgan County, Alabama, United States, 35640

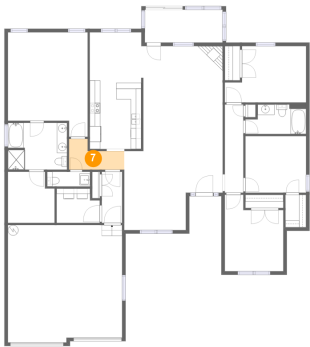
6 Floor 1 - Foyer



Max Dimensions: 7'0" x 7'11"  
Calculated Area: 56 sq. ft  
Included: Yes

Heated: Yes  
Finished: Yes  
Enclosed: Yes  
Contiguous: Yes  
Permitted: Yes  
Wet space: No  
Addition: No  
Conversion: No

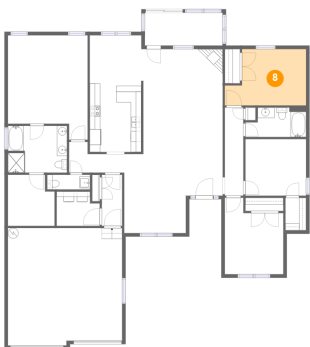
7 Floor 1 - Hall



Max Dimensions: 10'6" x 5'10"  
Calculated Area: 45 sq. ft  
Included: Yes

Heated: Yes  
Finished: Yes  
Enclosed: Yes  
Contiguous: Yes  
Permitted: Yes  
Wet space: No  
Addition: No  
Conversion: No

8 Floor 1 - Bedroom

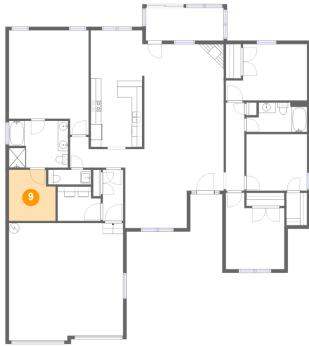


Max Dimensions: 15'6" x 10'8"  
Calculated Area: 143 sq. ft  
Included: Yes

Heated: Yes  
Finished: Yes  
Enclosed: Yes  
Contiguous: Yes  
Permitted: Yes  
Wet space: No  
Addition: No  
Conversion: No

625 Avalon Drive, Hartselle, Morgan County, Alabama, United States, 35640

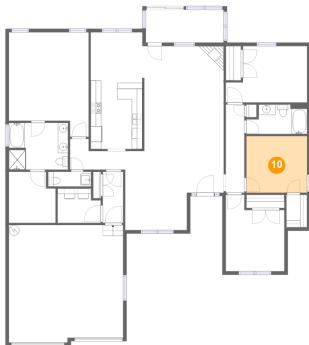
## 9 Floor 1 - W.I.C.



Max Dimensions: 8'11" x 9'9"  
Calculated Area: 81 sq. ft  
Included: Yes

Heated: Yes  
Finished: Yes  
Enclosed: Yes  
Contiguous: Yes  
Permitted: Yes  
Wet space: No  
Addition: No  
Conversion: No

## 10 Floor 1 - Bedroom



Max Dimensions: 11'7" x 10'9"  
Calculated Area: 124 sq. ft  
Included: Yes

Heated: Yes  
Finished: Yes  
Enclosed: Yes  
Contiguous: Yes  
Permitted: Yes  
Wet space: No  
Addition: No  
Conversion: No

## 11 Floor 1 - Bath



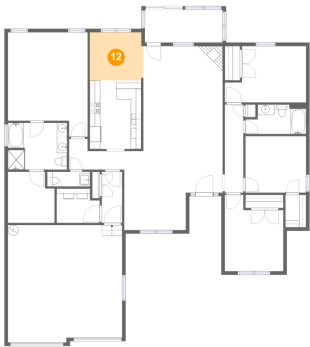
Max Dimensions: 11'3" x 8'11"  
Calculated Area: 99 sq. ft  
Included: Yes

Heated: Yes  
Finished: Yes  
Enclosed: Yes  
Contiguous: Yes  
Permitted: Yes  
Wet space: Yes  
Addition: No  
Conversion: No



625 Avalon Drive, Hartselle, Morgan County, Alabama, United States, 35640

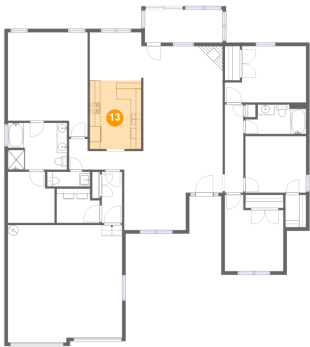
12 Floor 1 - Breakfast Nook



Max Dimensions: 10'2" x 9'2"  
Calculated Area: 92 sq. ft  
Included: Yes

Heated: Yes  
Finished: Yes  
Enclosed: Yes  
Contiguous: Yes  
Permitted: Yes  
Wet space: No  
Addition: No  
Conversion: No

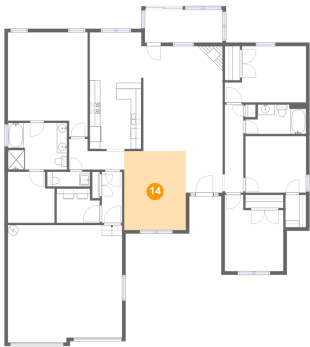
13 Floor 1 - Kitchen



Max Dimensions: 9'10" x 13'0"  
Calculated Area: 128 sq. ft  
Included: Yes

Heated: Yes  
Finished: Yes  
Enclosed: Yes  
Contiguous: Yes  
Permitted: Yes  
Wet space: No  
Addition: No  
Conversion: No

14 Floor 1 - Dining Area



Max Dimensions: 11'9" x 15'0"  
Calculated Area: 176 sq. ft  
Included: Yes

Heated: Yes  
Finished: Yes  
Enclosed: Yes  
Contiguous: Yes  
Permitted: Yes  
Wet space: No  
Addition: No  
Conversion: No

## Home report

625 Avalon Drive, Hartselle, Morgan County, Alabama, United States, 35640

### 15 Floor 1 - W.I.C.

---

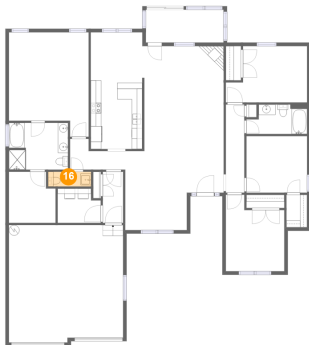


Max Dimensions: 3'11" x 6'2"  
Calculated Area: 24 sq. ft  
Included: Yes

Heated: Yes  
Finished: Yes  
Enclosed: Yes  
Contiguous: Yes  
Permitted: Yes  
Wet space: No  
Addition: No  
Conversion: No

### 16 Floor 1 - WC

---

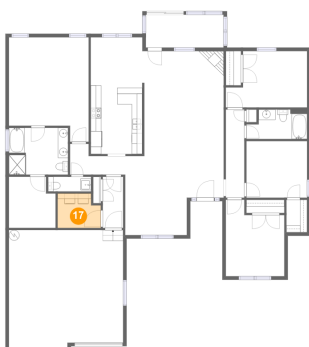


Max Dimensions: 8'2" x 2'9"  
Calculated Area: 23 sq. ft  
Included: Yes

Heated: Yes  
Finished: Yes  
Enclosed: Yes  
Contiguous: Yes  
Permitted: Yes  
Wet space: Yes  
Addition: No  
Conversion: No

### 17 Floor 1 - Laundry

---

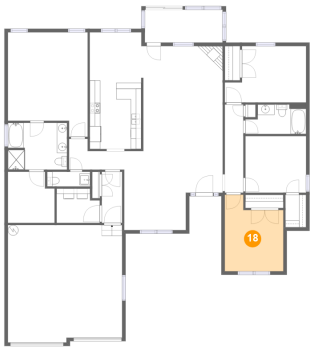


Max Dimensions: 8'2" x 6'7"  
Calculated Area: 49 sq. ft  
Included: Yes

Heated: Yes  
Finished: Yes  
Enclosed: Yes  
Contiguous: Yes  
Permitted: Yes  
Wet space: No  
Addition: No  
Conversion: No

625 Avalon Drive, Hartselle, Morgan County, Alabama, United States, 35640

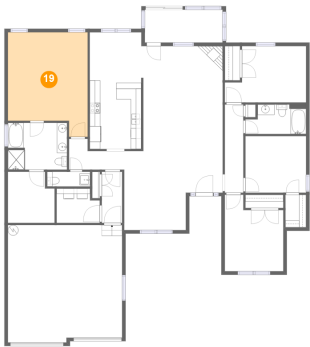
18 Floor 1 - Bedroom



Max Dimensions: 11'1" x 14'7"  
Calculated Area: 140 sq. ft  
Included: Yes

Heated: Yes  
Finished: Yes  
Enclosed: Yes  
Contiguous: Yes  
Permitted: Yes  
Wet space: No  
Addition: No  
Conversion: No

19 Floor 1 - Primary Bedroom



Max Dimensions: 15'2" x 19'11"  
Calculated Area: 266 sq. ft  
Included: Yes

Heated: Yes  
Finished: Yes  
Enclosed: Yes  
Contiguous: Yes  
Permitted: Yes  
Wet space: No  
Addition: No  
Conversion: No

20 Floor 1 - Hall



Max Dimensions: 3'10" x 9'9"  
Calculated Area: 38 sq. ft  
Included: Yes

Heated: Yes  
Finished: Yes  
Enclosed: Yes  
Contiguous: Yes  
Permitted: Yes  
Wet space: No  
Addition: No  
Conversion: No