

2210 Wycliffe Avenue Southwest, South Roanoke, Roanoke, Roanoke, Virginia, United States, 24014



Property summary


 **0** Garages

 **5** Bedrooms

 **1** Bathrooms

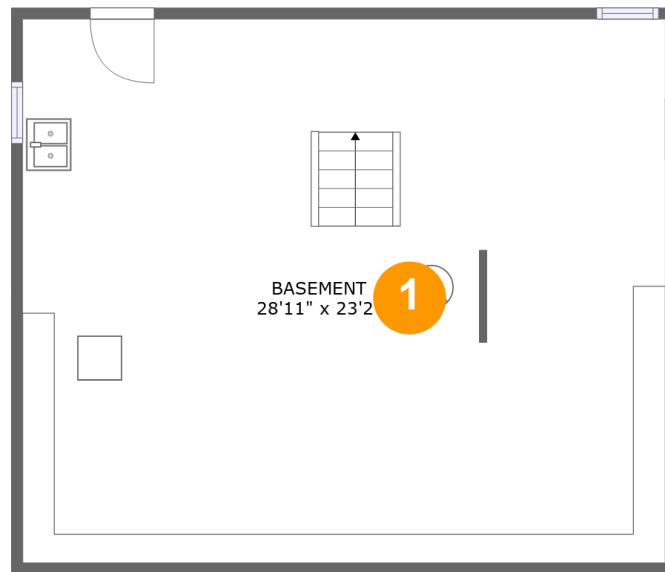
 **1** Half baths

 **3** Floors

 **1,630** Gross living area sqft

 **2,806** Total sqft

**2210 Wycliffe Avenue Southwest, South Roanoke,
Roanoke, Roanoke, Virginia, United States, 24014**



Room dimensions

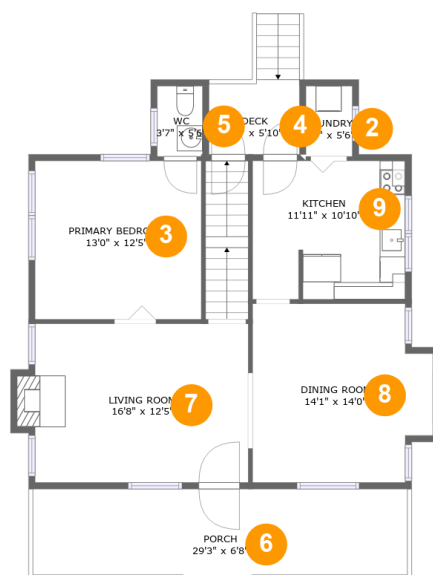
Floor 1

Total sqft: 762

Living area: 0

#		Dimensions	sqft	Counted as living area
1	Basement	28'11" x 23'2"	708 sq. ft	No

2210 Wycliffe Avenue Southwest, South Roanoke, Roanoke, Roanoke, Virginia, United States, 24014



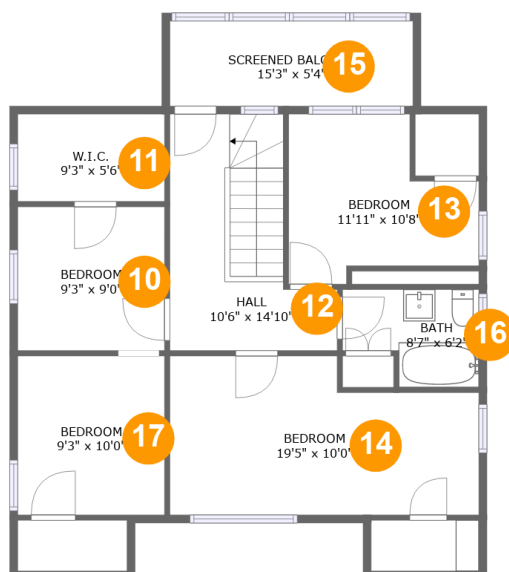
Room dimensions

Floor 2

Total sqft: 1112 Living area: 852

#		Dimensions	sqft	Counted as living area
2	Utility	3'8" x 5'6"	20 sq. ft	Yes
3	Bedroom	13'0" x 12'5"	161 sq. ft	Yes
4	Outdoor	7'1" x 5'10"	58 sq. ft	No
5	Bath	3'7" x 5'6"	19 sq. ft	Yes
6	Outdoor	29'3" x 6'8"	196 sq. ft	No
7	Living Room	16'8" x 12'5"	212 sq. ft	Yes
8	Dining Room	14'1" x 14'0"	181 sq. ft	Yes
9	Kitchen	11'11" x 10'10"	128 sq. ft	Yes

2210 Wycliffe Avenue Southwest, South Roanoke, Roanoke, Roanoke, Virginia, United States, 24014



Room dimensions

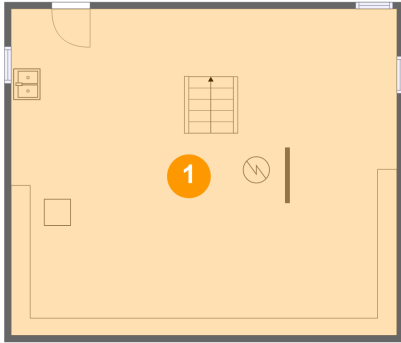
Floor 3

Total sqft: 932 Living area: 778

#		Dimensions	sqft	Counted as living area
10	Bedroom	9'3" x 9'0"	83 sq. ft	Yes
11	Cl	9'3" x 5'6"	17 sq. ft	Yes
12	Hall	10'6" x 14'10"	119 sq. ft	Yes
13	Bedroom	11'11" x 10'8"	100 sq. ft	Yes
14	Bedroom	19'5" x 10'0"	173 sq. ft	Yes
15	Outdoor	15'3" x 5'4"	81 sq. ft	No
16	Bath	8'7" x 6'2"	44 sq. ft	Yes
17	Bedroom	9'3" x 10'0"	92 sq. ft	Yes

**2210 Wycliffe Avenue Southwest, South Roanoke,
Roanoke, Roanoke, Virginia, United States, 24014**

1 Floor 1 - Basement



Dimensions: 28'11" x 23'2"
Area: 708 sq. ft
Counted as living area: No

Heated: Yes
Finished: No
Enclosed: Yes
Contiguous: Yes
Permitted: Yes
Wet space: No
Addition: No
Conversion: No

2 Floor 2 - Utility



Dimensions: 3'8" x 5'6"
Area: 20 sq. ft
Counted as living area: Yes

Heated: Yes
Finished: Yes
Enclosed: Yes
Contiguous: Yes
Permitted: Yes
Wet space: No
Addition: No
Conversion: No

2210 Wycliffe Avenue Southwest, South Roanoke, Roanoke, Roanoke, Virginia, United States, 24014

3 Floor 2 - Bedroom



Dimensions: 13'0" x 12'5"
Area: 161 sq. ft
Counted as living area: Yes

Heated: Yes
Finished: Yes
Enclosed: Yes
Contiguous: Yes
Permitted: Yes
Wet space: No
Addition: No
Conversion: No

4 Floor 2 - Outdoor



Dimensions: 7'1" x 5'10"
Area: 58 sq. ft
Counted as living area: No

Heated: No
Finished: Yes
Enclosed: No
Contiguous: Yes
Permitted: Yes
Wet space: No
Addition: No
Conversion: No

5 Floor 2 - Bath



Dimensions: 3'7" x 5'6"
Area: 19 sq. ft
Counted as living area: Yes

Heated: Yes
Finished: Yes
Enclosed: Yes
Contiguous: Yes
Permitted: Yes
Wet space: Yes
Addition: No
Conversion: No

2210 Wycliffe Avenue Southwest, South Roanoke, Roanoke, Roanoke, Virginia, United States, 24014

6 Floor 2 - Outdoor



Dimensions: 29'3" x 6'8"
Area: 196 sq. ft
Counted as living area: No

Heated: No
Finished: Yes
Enclosed: No
Contiguous: Yes
Permitted: Yes
Wet space: No
Addition: No
Conversion: No

7 Floor 2 - Living Room



Dimensions: 16'8" x 12'5"
Area: 212 sq. ft
Counted as living area: Yes

Heated: Yes
Finished: Yes
Enclosed: Yes
Contiguous: Yes
Permitted: Yes
Wet space: No
Addition: No
Conversion: No

8 Floor 2 - Dining Room

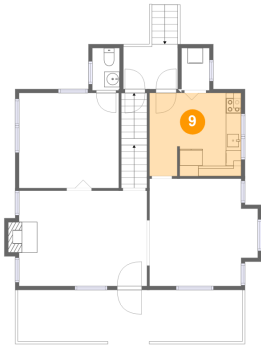


Dimensions: 14'1" x 14'0"
Area: 181 sq. ft
Counted as living area: Yes

Heated: Yes
Finished: Yes
Enclosed: Yes
Contiguous: Yes
Permitted: Yes
Wet space: No
Addition: No
Conversion: No

2210 Wycliffe Avenue Southwest, South Roanoke, Roanoke, Roanoke, Virginia, United States, 24014

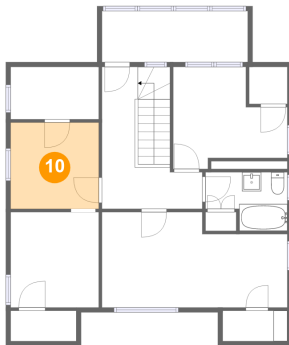
9 Floor 2 - Kitchen



Dimensions: 11'11" x 10'10"
Area: 128 sq. ft
Counted as living area: Yes

Heated: Yes
Finished: Yes
Enclosed: Yes
Contiguous: Yes
Permitted: Yes
Wet space: No
Addition: No
Conversion: No

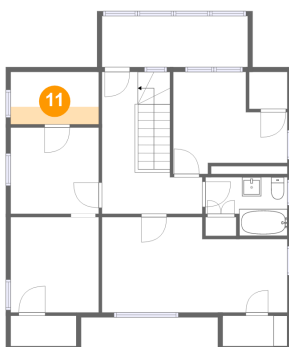
10 Floor 3 - Bedroom



Dimensions: 9'3" x 9'0"
Area: 83 sq. ft
Counted as living area: Yes

Heated: Yes
Finished: Yes
Enclosed: Yes
Contiguous: Yes
Permitted: Yes
Wet space: No
Addition: No
Conversion: No

11 Floor 3 - Cl

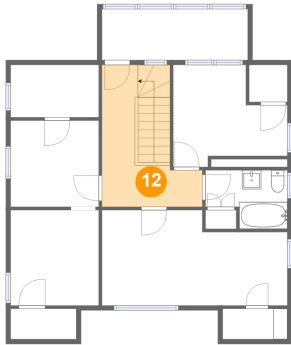


Dimensions: 9'3" x 5'6"
Area: 17 sq. ft
Counted as living area: Yes

Heated: Yes
Finished: Yes
Enclosed: Yes
Contiguous: Yes
Permitted: Yes
Wet space: No
Addition: No
Conversion: No

**2210 Wycliffe Avenue Southwest, South Roanoke,
Roanoke, Roanoke, Virginia, United States, 24014**

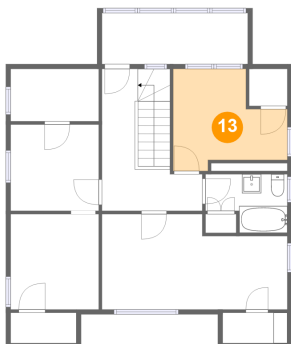
12 Floor 3 - Hall



Dimensions: 10'6" x 14'10"
Area: 119 sq. ft
Counted as living area: Yes

Heated: Yes
Finished: Yes
Enclosed: Yes
Contiguous: Yes
Permitted: Yes
Wet space: No
Addition: No
Conversion: No

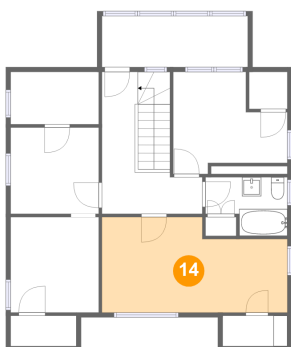
13 Floor 3 - Bedroom



Dimensions: 11'11" x 10'8"
Area: 100 sq. ft
Counted as living area: Yes

Heated: Yes
Finished: Yes
Enclosed: Yes
Contiguous: Yes
Permitted: Yes
Wet space: No
Addition: No
Conversion: No

14 Floor 3 - Bedroom

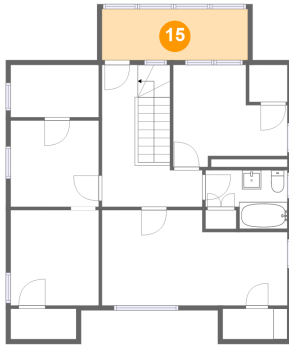


Dimensions: 19'5" x 10'0"
Area: 173 sq. ft
Counted as living area: Yes

Heated: Yes
Finished: Yes
Enclosed: Yes
Contiguous: Yes
Permitted: Yes
Wet space: No
Addition: No
Conversion: No

2210 Wycliffe Avenue Southwest, South Roanoke,
Roanoke, Roanoke, Virginia, United States, 24014

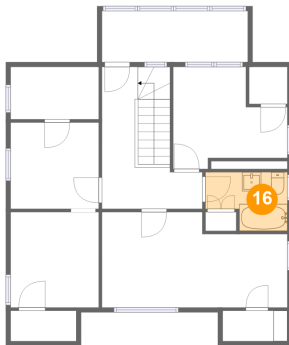
15 Floor 3 - Outdoor



Dimensions: 15'3" x 5'4"
Area: 81 sq. ft
Counted as living area: No

Heated: No
Finished: Yes
Enclosed: No
Contiguous: Yes
Permitted: Yes
Wet space: No
Addition: No
Conversion: No

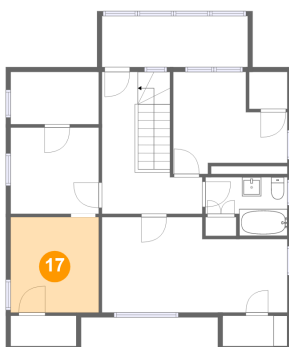
16 Floor 3 - Bath



Dimensions: 8'7" x 6'2"
Area: 44 sq. ft
Counted as living area: Yes

Heated: Yes
Finished: Yes
Enclosed: Yes
Contiguous: Yes
Permitted: Yes
Wet space: Yes
Addition: No
Conversion: No

17 Floor 3 - Bedroom



Dimensions: 9'3" x 10'0"
Area: 92 sq. ft
Counted as living area: Yes

Heated: Yes
Finished: Yes
Enclosed: Yes
Contiguous: Yes
Permitted: Yes
Wet space: No
Addition: No
Conversion: No