

**TOTAL: 3456 sq. ft**

FLOOR 1: 1484 sq. ft, FLOOR 2: 1718 sq. ft, FLOOR 3: 254 sq. ft

EXCLUDED AREAS: GARAGE: 853 sq. ft, BAY WINDOW: 4 sq. ft, LOW CEILING: 183 sq. ft



**TOTAL: 3456 sq. ft**

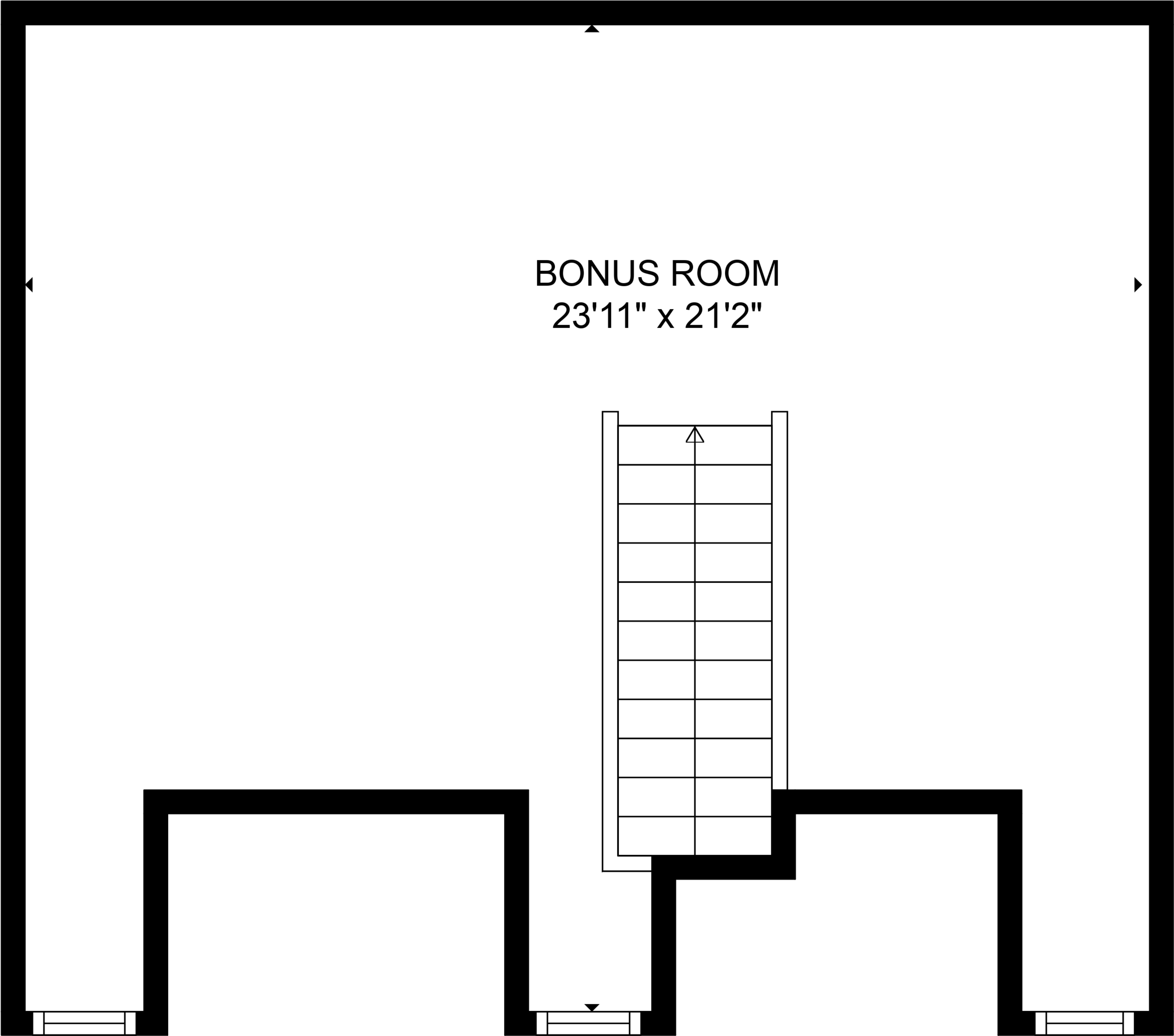
FLOOR 1: 1484 sq. ft, FLOOR 2: 1718 sq. ft, FLOOR 3: 254 sq. ft

EXCLUDED AREAS: GARAGE: 853 sq. ft, BAY WINDOW: 4 sq. ft, LOW CEILING: 183 sq. ft



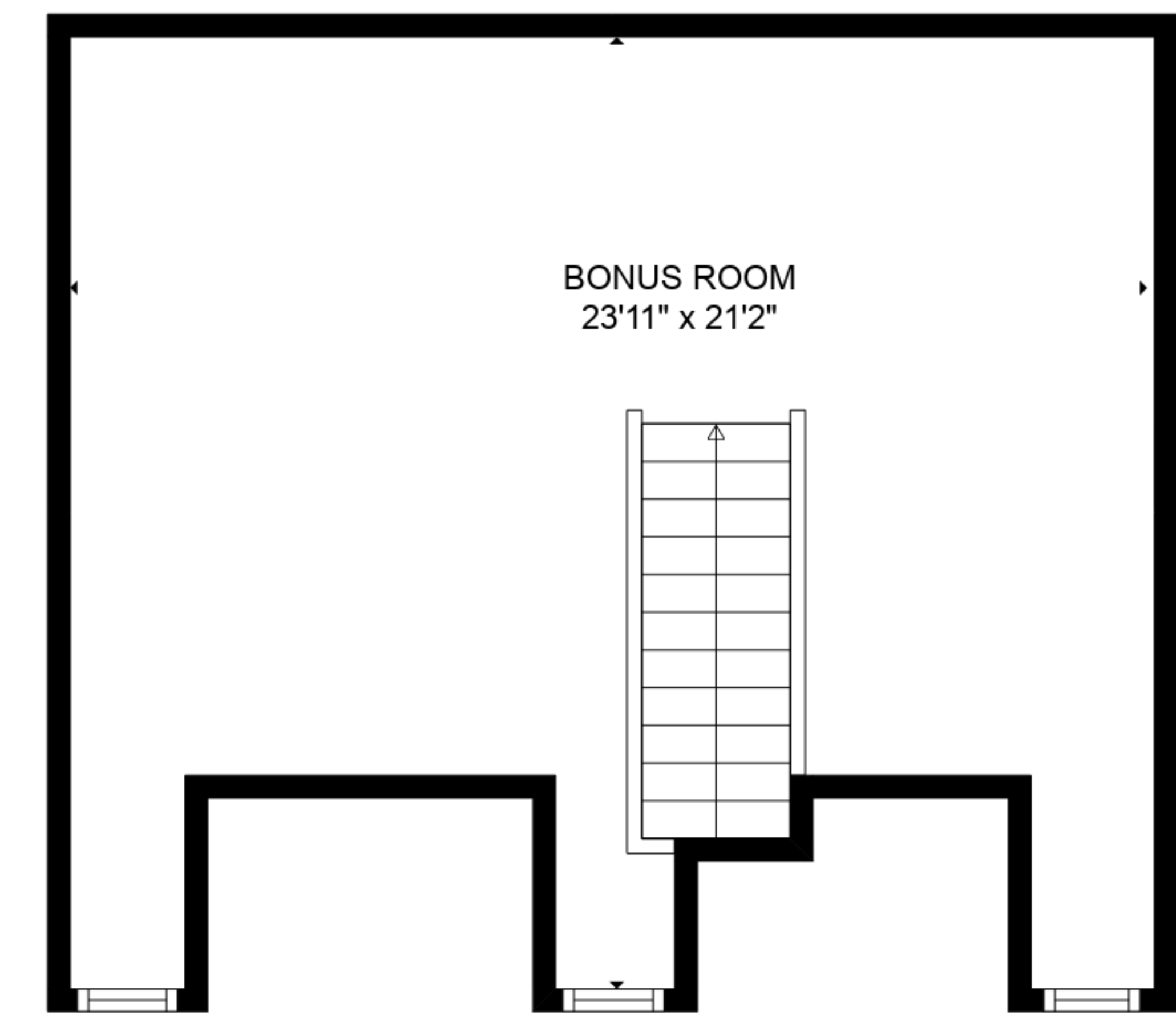
Floor Plans are provided by HouseSnappers.com. Measurements are deemed highly reliable but not guaranteed.



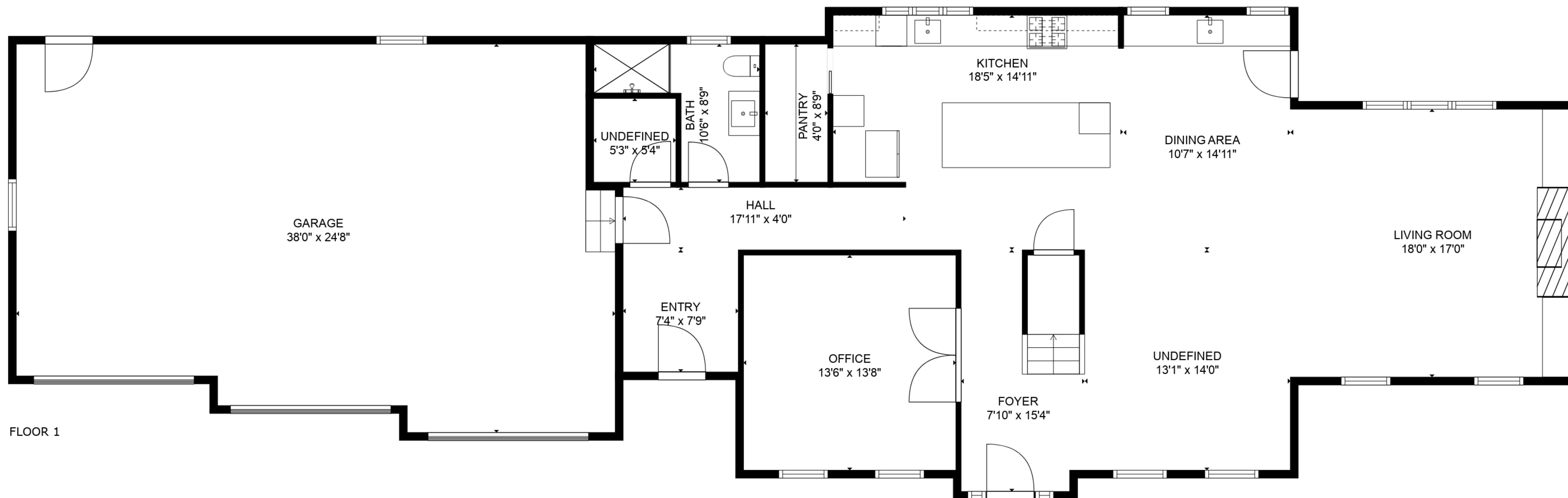




FLOOR 2



FLOOR 3



FLOOR 1

**TOTAL: 3456 sq. ft**

FLOOR 1: 1484 sq. ft, FLOOR 2: 1718 sq. ft, FLOOR 3: 254 sq. ft

EXCLUDED AREAS: GARAGE: 853 sq. ft, BAY WINDOW: 4 sq. ft, LOW CEILING: 183 sq. ft



Floor Plans are provided by HouseSnappers.com. Measurements are deemed highly reliable but not guaranteed.