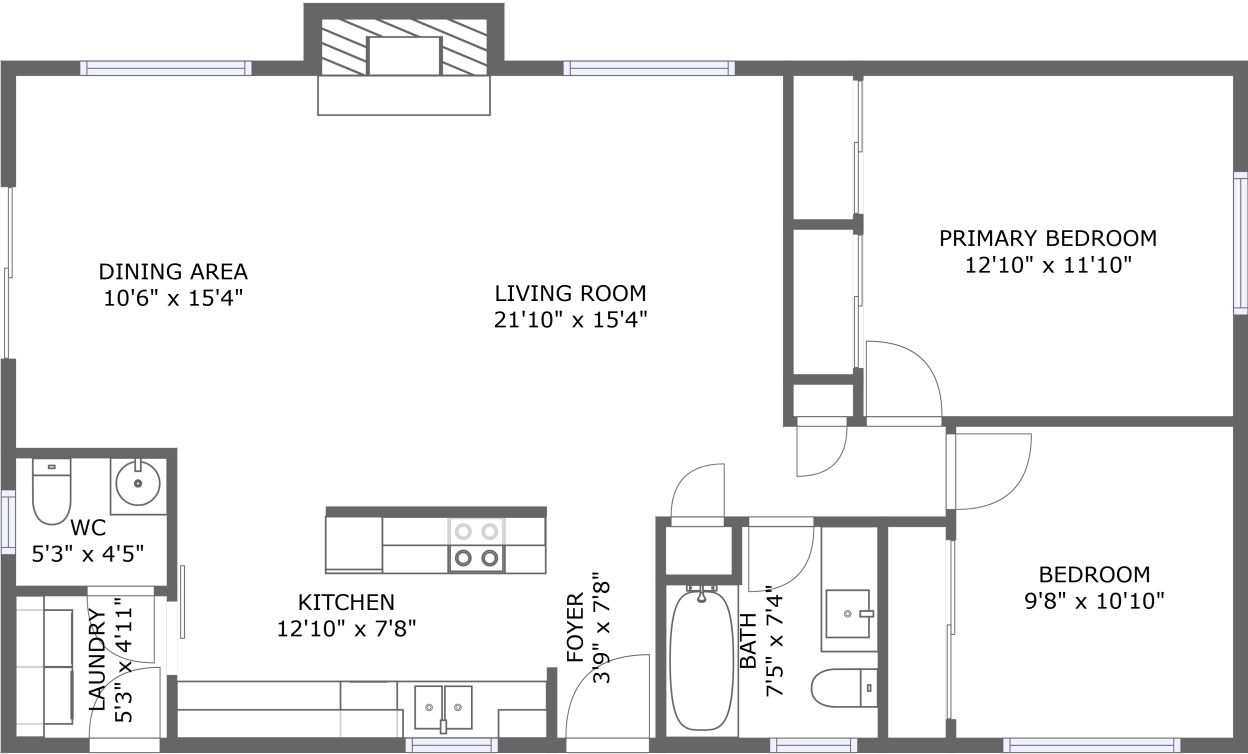



Home report


995 Southeast Rolph Court, Waldport, Oregon 97394, United States





FLOOR 1

Property summary

 **0** Garages

 **2** Bedrooms

 **1** Bathrooms

 **1** Half baths

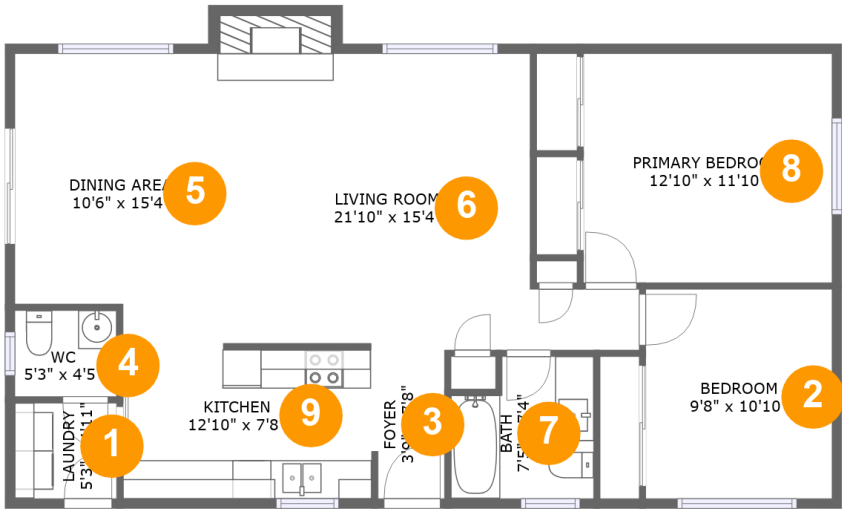
 **1** Floors

 **1,039** Gross living area sqft

 **1,053** Total sqft

Home report

995 Southeast Rolph Court, Waldport, Oregon 97394, United States



Room dimensions

Floor 1

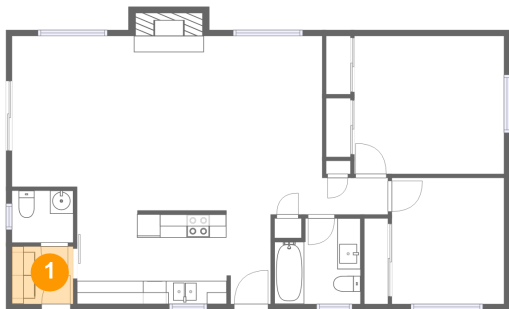
Total sqft: 1053

Living area: 1039

#		Max Dimensions	sqft	Included
1	Laundry	5'3" x 4'11"	26 sq. ft	Yes
2	Bedroom	9'8" x 10'10"	104 sq. ft	Yes
3	Foyer	3'9" x 7'8"	28 sq. ft	Yes
4	WC	5'3" x 4'5"	23 sq. ft	Yes
5	Dining Area	10'6" x 15'4"	148 sq. ft	Yes
6	Living Room	21'10" x 15'4"	277 sq. ft	Yes
7	Bath	7'5" x 7'4"	49 sq. ft	Yes
8	Primary Bedroom	12'10" x 11'10"	152 sq. ft	Yes
9	Kitchen	12'10" x 7'8"	99 sq. ft	Yes

995 Southeast Rolph Court, Waldport, Oregon 97394, United States

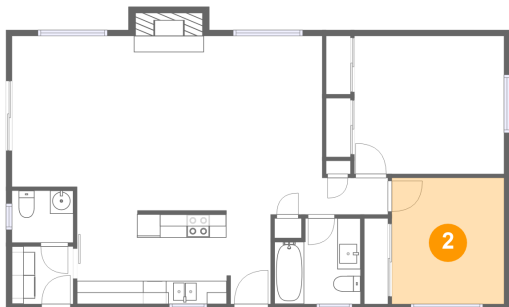
1 Floor 1 - Laundry



Max Dimensions: 5'3" x 4'11"
Calculated Area: 26 sq. ft
Included: Yes

Heated: Yes
Finished: Yes
Enclosed: Yes
Contiguous: Yes
Permitted: Yes
Wet space: No
Addition: No
Conversion: No

2 Floor 1 - Bedroom



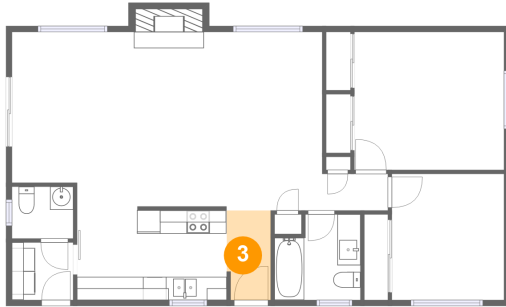
Max Dimensions: 9'8" x 10'10"
Calculated Area: 104 sq. ft
Included: Yes

Heated: Yes
Finished: Yes
Enclosed: Yes
Contiguous: Yes
Permitted: Yes
Wet space: No
Addition: No
Conversion: No

Home report

995 Southeast Rolph Court, Waldport, Oregon 97394, United States

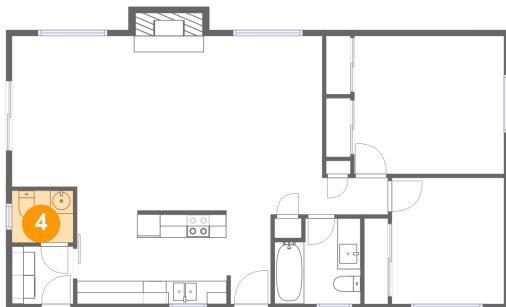
3 Floor 1 - Foyer



Max Dimensions: 3'9" x 7'8"
Calculated Area: 28 sq. ft
Included: Yes

Heated: Yes
Finished: Yes
Enclosed: Yes
Contiguous: Yes
Permitted: Yes
Wet space: No
Addition: No
Conversion: No

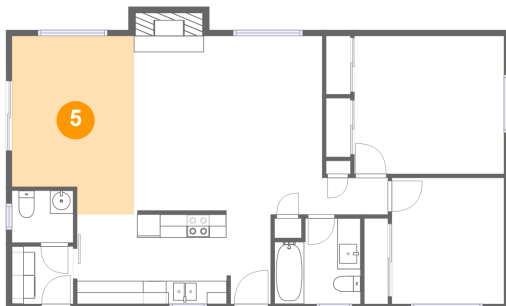
4 Floor 1 - WC



Max Dimensions: 5'3" x 4'5"
Calculated Area: 23 sq. ft
Included: Yes

Heated: Yes
Finished: Yes
Enclosed: Yes
Contiguous: Yes
Permitted: Yes
Wet space: Yes
Addition: No
Conversion: No

5 Floor 1 - Dining Area

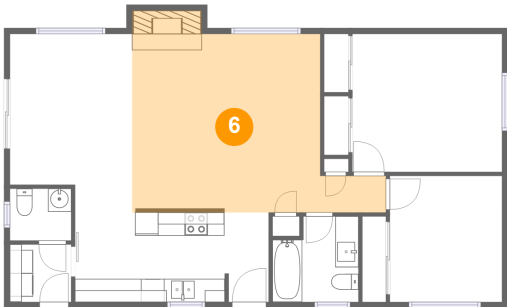


Max Dimensions: 10'6" x 15'4"
Calculated Area: 148 sq. ft
Included: Yes

Heated: Yes
Finished: Yes
Enclosed: Yes
Contiguous: Yes
Permitted: Yes
Wet space: No
Addition: No
Conversion: No

995 Southeast Rolph Court, Waldport, Oregon 97394, United States

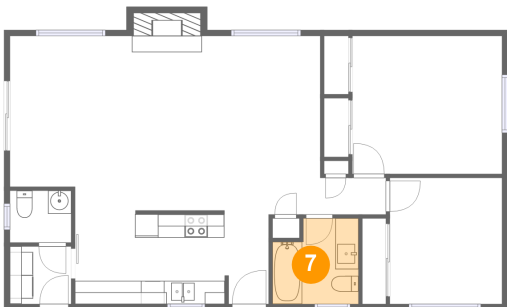
6 Floor 1 - Living Room



Max Dimensions: 21'10" x 15'4"
Calculated Area: 277 sq. ft
Included: Yes

Heated: Yes
Finished: Yes
Enclosed: Yes
Contiguous: Yes
Permitted: Yes
Wet space: No
Addition: No
Conversion: No

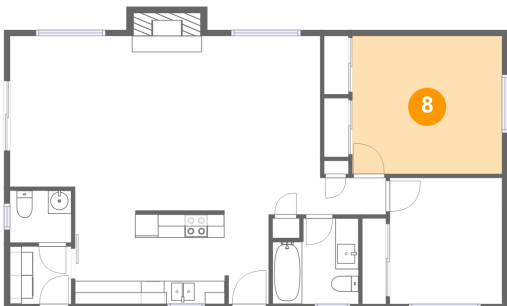
7 Floor 1 - Bath



Max Dimensions: 7'5" x 7'4"
Calculated Area: 49 sq. ft
Included: Yes

Heated: Yes
Finished: Yes
Enclosed: Yes
Contiguous: Yes
Permitted: Yes
Wet space: Yes
Addition: No
Conversion: No

8 Floor 1 - Primary Bedroom

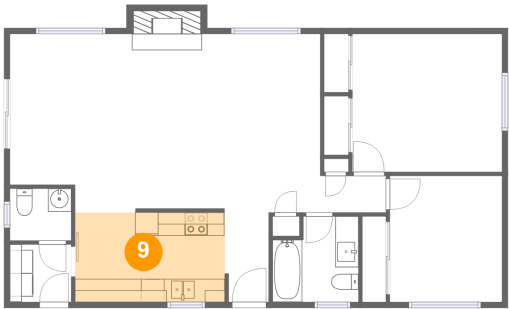


Max Dimensions: 12'10" x 11'10"
Calculated Area: 152 sq. ft
Included: Yes

Heated: Yes
Finished: Yes
Enclosed: Yes
Contiguous: Yes
Permitted: Yes
Wet space: No
Addition: No
Conversion: No

995 Southeast Rolph Court, Waldport, Oregon 97394, United States

9 Floor 1 - Kitchen



Max Dimensions: 12'10" x 7'8"
Calculated Area: 99 sq. ft
Included: Yes

Heated: Yes
Finished: Yes
Enclosed: Yes
Contiguous: Yes
Permitted: Yes
Wet space: No
Addition: No
Conversion: No