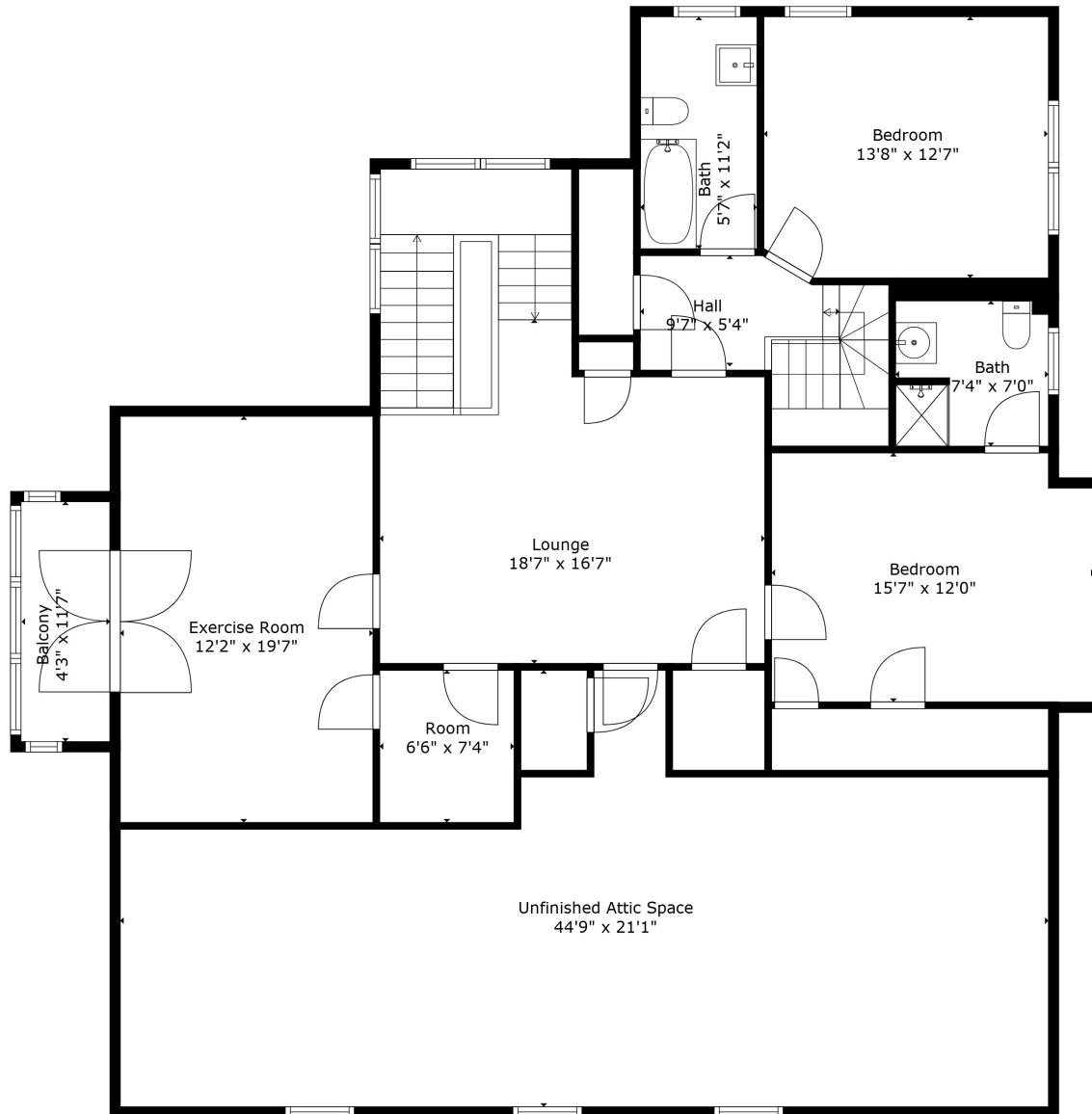


**GROSS INTERNAL AREA**

Below Ground: 278 sq. ft, FLOOR 2: 2721 sq. ft, FLOOR 3: 2277 sq. ft, FLOOR 4: 1452 sq. ft  
 EXCLUDED AREAS: STORAGE: 574 sq. ft, ELECTRICAL ROOM: 178 sq. ft, UNFINISHED BASEMENT: 681 sq. ft,  
 WINE CELLAR: 105 sq. ft, PORCH: 42 sq. ft, PATIO: 120 sq. ft,  
 DECK: 223 sq. ft, FIREPLACE: 5 sq. ft, BALCONY: 307 sq. ft,  
 UNDEFINED: 32 sq. ft, LOW CEILING: 27 sq. ft, UNFINISHED ATTIC SPACE: 529 sq. ft  
**TOTAL: 6728 sq. ft**

In House Photography | Measurements Are Deemed Highly Reliable But Not Guaranteed



**GROSS INTERNAL AREA**

Below Ground: 278 sq. ft, FLOOR 2: 2721 sq. ft, FLOOR 3: 2277 sq. ft, FLOOR 4: 1452 sq. ft  
 EXCLUDED AREAS: STORAGE: 574 sq. ft, ELECTRICAL ROOM: 178 sq. ft, UNFINISHED BASEMENT: 681 sq. ft,  
 WINE CELLAR: 105 sq. ft, PORCH: 42 sq. ft, PATIO: 120 sq. ft,  
 DECK: 223 sq. ft, FIREPLACE: 5 sq. ft, BALCONY: 307 sq. ft,  
 UNDEFINED: 32 sq. ft, LOW CEILING: 27 sq. ft, UNFINISHED ATTIC SPACE: 529 sq. ft  
**TOTAL: 6728 sq. ft**

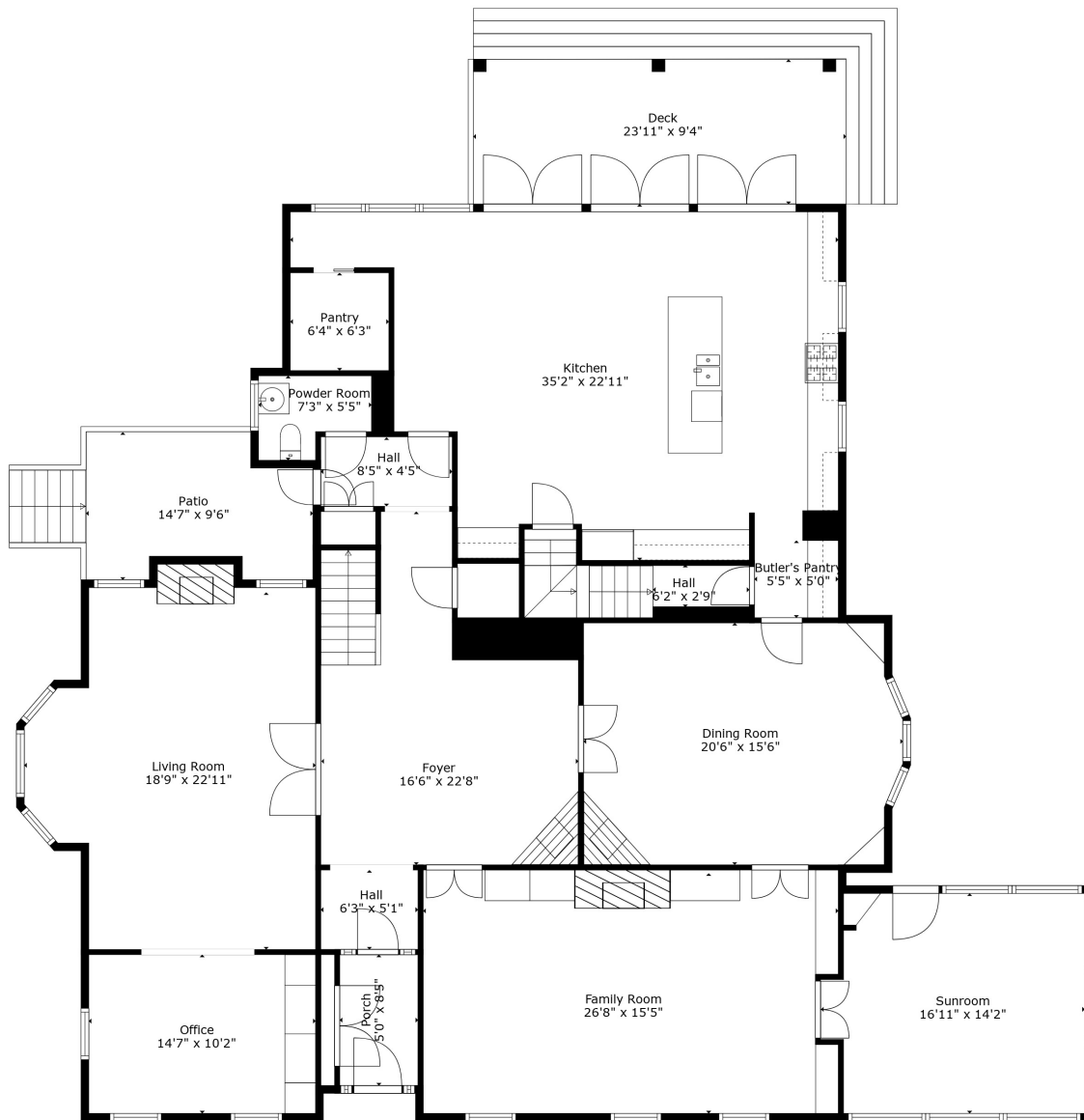
In House Photography | Measurements Are Deemed Highly Reliable But Not Guaranteed



**GROSS INTERNAL AREA**

Below Ground: 278 sq. ft, FLOOR 2: 2721 sq. ft, FLOOR 3: 2277 sq. ft, FLOOR 4: 1452 sq. ft  
 EXCLUDED AREAS: STORAGE: 574 sq. ft, ELECTRICAL ROOM: 178 sq. ft, UNFINISHED BASEMENT: 681 sq. ft,  
 WINE CELLAR: 105 sq. ft, PORCH: 42 sq. ft, PATIO: 120 sq. ft,  
 DECK: 223 sq. ft, FIREPLACE: 5 sq. ft, BALCONY: 307 sq. ft,  
 UNDEFINED: 32 sq. ft, LOW CEILING: 27 sq. ft, UNFINISHED ATTIC SPACE: 529 sq. ft  
**TOTAL: 6728 sq. ft**

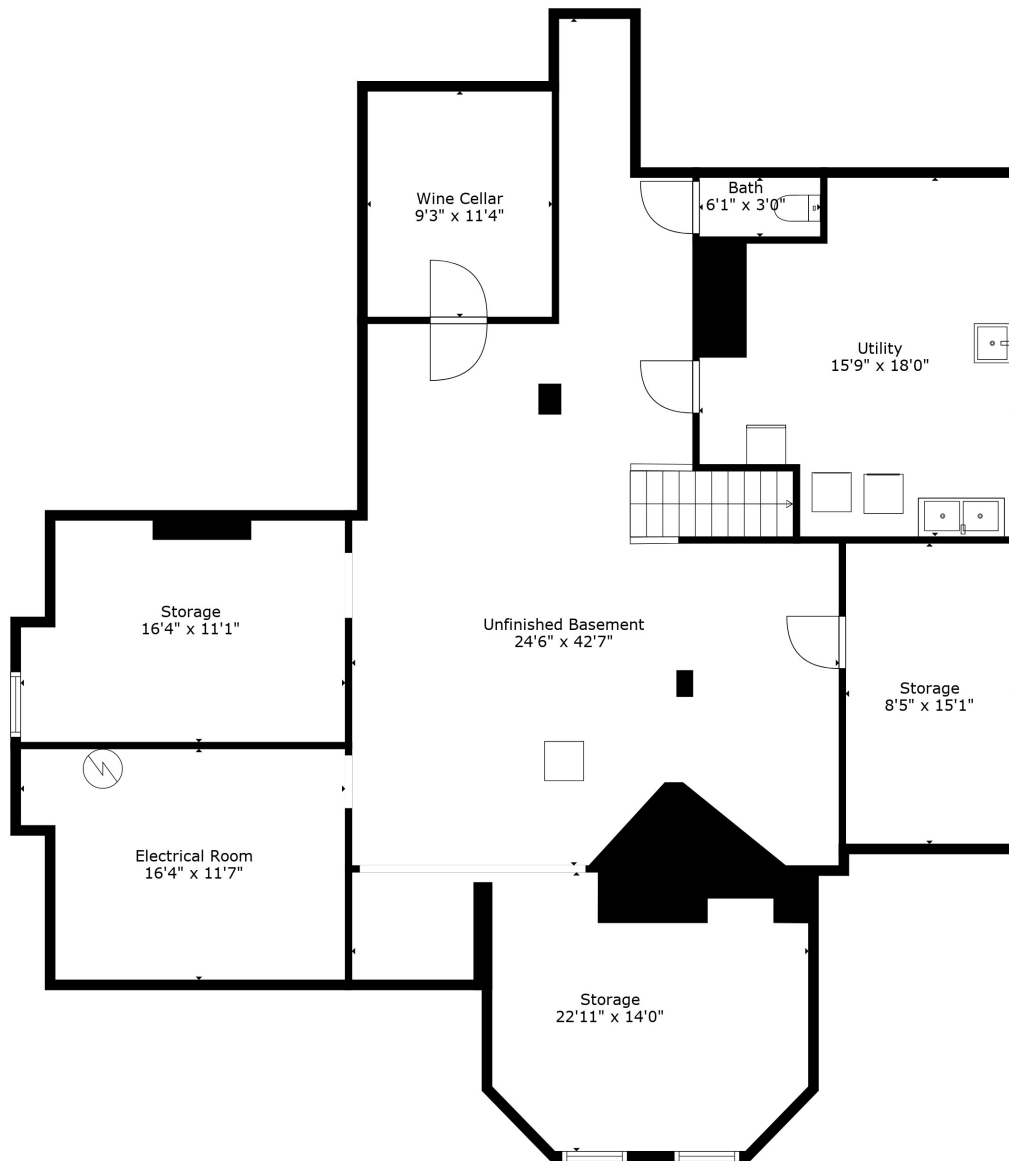
In House Photography | Measurements Are Deemed Highly Reliable But Not Guaranteed



**GROSS INTERNAL AREA**

Below Ground: 278 sq. ft, FLOOR 2: 2721 sq. ft, FLOOR 3: 2277 sq. ft, FLOOR 4: 1452 sq. ft  
 EXCLUDED AREAS: STORAGE: 574 sq. ft, ELECTRICAL ROOM: 178 sq. ft, UNFINISHED BASEMENT: 681 sq. ft,  
 WINE CELLAR: 105 sq. ft, PORCH: 42 sq. ft, PATIO: 120 sq. ft,  
 DECK: 223 sq. ft, FIREPLACE: 5 sq. ft, BALCONY: 307 sq. ft,  
 UNDEFINED: 32 sq. ft, LOW CEILING: 27 sq. ft, UNFINISHED ATTIC SPACE: 529 sq. ft  
**TOTAL: 6728 sq. ft**

In House Photography | Measurements Are Deemed Highly Reliable But Not Guaranteed



**GROSS INTERNAL AREA**

Below Ground: 278 sq. ft, FLOOR 2: 2721 sq. ft, FLOOR 3: 2277 sq. ft, FLOOR 4: 1452 sq. ft  
 EXCLUDED AREAS: STORAGE: 574 sq. ft, ELECTRICAL ROOM: 178 sq. ft, UNFINISHED BASEMENT: 681 sq. ft,  
 WINE CELLAR: 105 sq. ft, PORCH: 42 sq. ft, PATIO: 120 sq. ft,  
 DECK: 223 sq. ft, FIREPLACE: 5 sq. ft, BALCONY: 307 sq. ft,  
 UNDEFINED: 32 sq. ft, LOW CEILING: 27 sq. ft, UNFINISHED ATTIC SPACE: 529 sq. ft  
**TOTAL: 6728 sq. ft**

In House Photography | Measurements Are Deemed Highly Reliable But Not Guaranteed