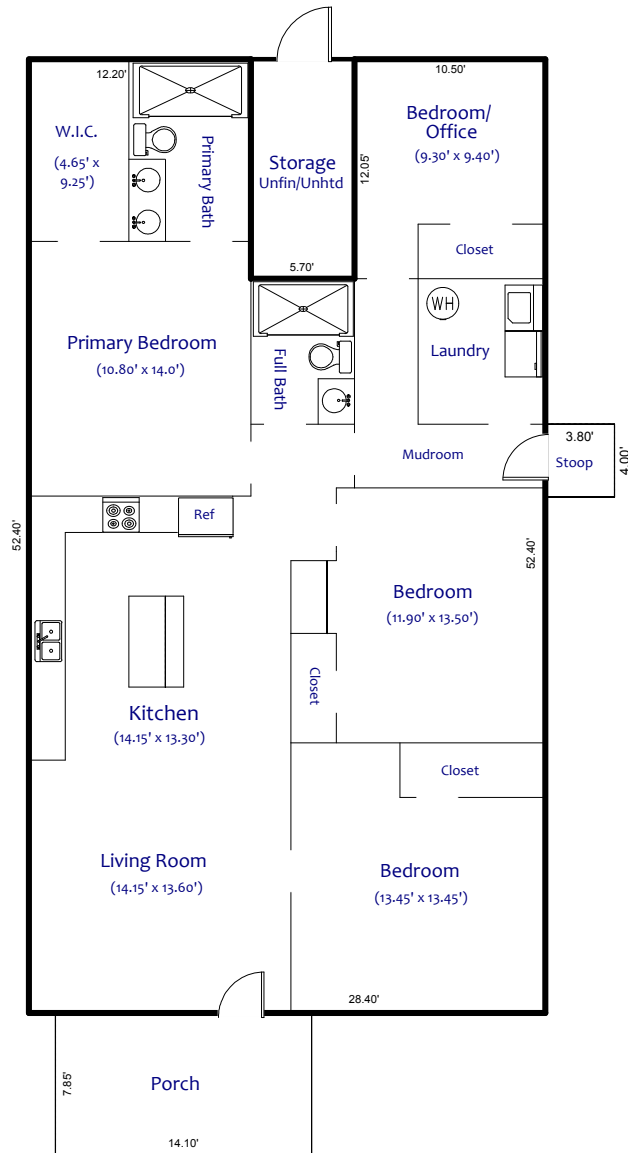


2431 Dundeen Street

Charlotte NC



Presented by Evelyn McCorkle for Helen Adams Realty

Copyright 2023 Home Analytics Appraisal 704-491-4862 HomeAnalyticsAppraisal.com All Rights Reserved

All dimensions are approximate - Not to exact scale.

This measurement was completed in accordance with the ANSI Standard Z765-2003 and the NC Real Estate Commission Guidelines.

AREA CALCULATIONS SUMMARY

Code	Description	Net Size	Net Totals
GLA1	One Story	1419.4750	1419.4750
P/P	Porch	110.6850	
	Stoop	15.2000	125.8850
OTH	Att Storage Room	68.6850	68.6850
Net LIVABLE Area		(rounded)	1419

LIVING AREA BREAKDOWN

Breakdown			Subtotals
One Story			
12.05	x	10.50	126.5250
12.05	x	12.20	147.0100
40.35	x	28.40	1145.9400
3 Items			(rounded) 1419

One Story	GLA1
12.05 x 10.50 =	126.5250
12.05 x 12.20 =	147.0100
40.35 x 28.40 =	1145.9400

Area total (rounded) = 1419

Att Storage Room	OTH
5.70 x 12.05 =	68.6850

Area total (rounded) = 69

Porch	P/P
7.85 x 14.10 =	110.6850

Area total (rounded) = 111

Stoop	P/P
4.00 x 3.80 =	15.2000

Area total (rounded) = 15