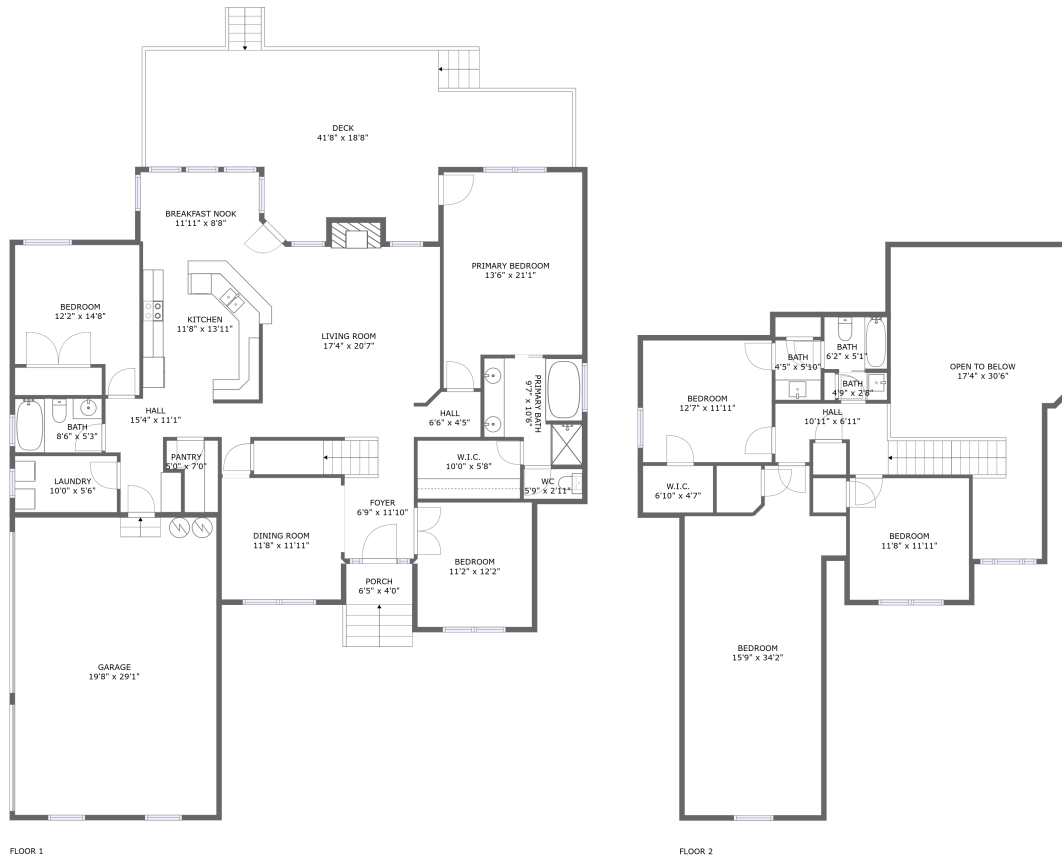


209 Cedar Springs Place, Madison, Madison County, Alabama, United States, 35758



Property summary

 **1** Garages

 **6** Bedrooms

 **3** Bathrooms

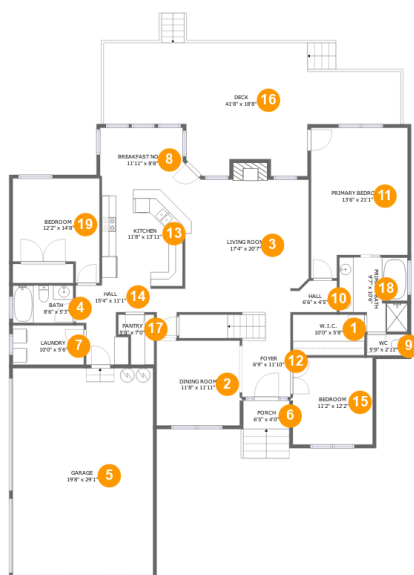
 **0** Half baths

 **2** Floors

 **3,091** Gross living area sqft

 **4,659** Total sqft

209 Cedar Springs Place, Madison, Madison County, Alabama, United States, 35758



Room dimensions

Floor 1

Total sqft: 3166 Living area: 1989

| # | | Dimensions | sqft | Counted as living area |
|----|-------------|----------------|------------|------------------------|
| 1 | CL | 10'0" x 5'8" | 57 sq. ft | Yes |
| 2 | Dining Room | 11'8" x 11'11" | 139 sq. ft | Yes |
| 3 | Living Room | 17'4" x 20'7" | 327 sq. ft | Yes |
| 4 | Bath | 8'6" x 5'3" | 45 sq. ft | Yes |
| 5 | Garage | 19'8" x 29'1" | 572 sq. ft | No |
| 6 | Outdoor | 6'5" x 4'0" | 26 sq. ft | No |
| 7 | Utility | 10'0" x 5'6" | 55 sq. ft | Yes |
| 8 | Nook | 11'11" x 8'8" | 101 sq. ft | Yes |
| 9 | Bath | 5'9" x 2'11" | 17 sq. ft | Yes |
| 10 | Hall | 6'6" x 4'5" | 26 sq. ft | Yes |
| 11 | Bedroom | 13'6" x 21'1" | 253 sq. ft | Yes |

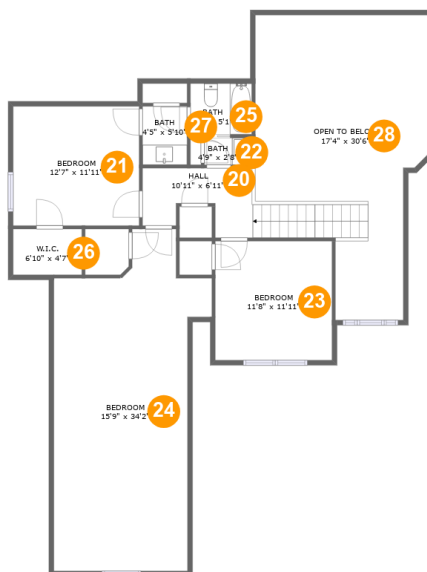
Scan captured on Fri, 20 Dec 2024 16:10:38 GMT

Information is calculated by Cubicasa technology deemed highly reliable but not guaranteed.

**209 Cedar Springs Place, Madison, Madison County,
Alabama, United States, 35758**

| # | | Dimensions | sqft | Counted as living area |
|----|---------|----------------|------------|------------------------|
| 12 | Entry | 6'9" x 11'10" | 110 sq. ft | Yes |
| 13 | Kitchen | 11'8" x 13'11" | 158 sq. ft | Yes |
| 14 | Hall | 15'4" x 11'1" | 102 sq. ft | Yes |
| 15 | Bedroom | 11'2" x 12'2" | 136 sq. ft | Yes |
| 16 | Outdoor | 41'8" x 18'8" | 530 sq. ft | No |
| 17 | Pantry | 5'0" x 7'0" | 28 sq. ft | Yes |
| 18 | Bath | 9'7" x 10'6" | 89 sq. ft | Yes |
| 19 | Bedroom | 12'2" x 14'8" | 152 sq. ft | Yes |

209 Cedar Springs Place, Madison, Madison County, Alabama, United States, 35758



Room dimensions

Floor 2

Total sqft: 1493 Living area: 1102

| # | | Dimensions | sqft | Counted as living area |
|----|---------------|----------------|------------|------------------------|
| 20 | Hall | 10'11" x 6'11" | 103 sq. ft | Yes |
| 21 | Bedroom | 12'7" x 11'11" | 150 sq. ft | Yes |
| 22 | Bath | 4'9" x 2'8" | 13 sq. ft | Yes |
| 23 | Bedroom | 11'8" x 11'11" | 139 sq. ft | Yes |
| 24 | Bedroom | 15'9" x 34'2" | 350 sq. ft | Yes |
| 25 | Bath | 6'2" x 5'1" | 31 sq. ft | Yes |
| 26 | Cl | 6'10" x 4'7" | 31 sq. ft | Yes |
| 27 | Bath | 4'5" x 5'10" | 26 sq. ft | Yes |
| 28 | Open To Below | 17'4" x 30'6" | 380 sq. ft | No |

209 Cedar Springs Place, Madison, Madison County, Alabama, United States, 35758

1 Floor 1 - Cl



Dimensions: 10'0" x 5'8"
Area: 57 sq. ft
Counted as living area: Yes

Heated: Yes
Finished: Yes
Enclosed: Yes
Contiguous: Yes
Permitted: Yes
Wet space: No
Addition: No
Conversion: No

2 Floor 1 - Dining Room



Dimensions: 11'8" x 11'11"
Area: 139 sq. ft
Counted as living area: Yes

Heated: Yes
Finished: Yes
Enclosed: Yes
Contiguous: Yes
Permitted: Yes
Wet space: No
Addition: No
Conversion: No

209 Cedar Springs Place, Madison, Madison County, Alabama, United States, 35758

3 Floor 1 - Living Room



Dimensions: 17'4" x 20'7"
Area: 327 sq. ft
Counted as living area: Yes

Heated: Yes
Finished: Yes
Enclosed: Yes
Contiguous: Yes
Permitted: Yes
Wet space: No
Addition: No
Conversion: No

4 Floor 1 - Bath



Dimensions: 8'6" x 5'3"
Area: 45 sq. ft
Counted as living area: Yes

Heated: Yes
Finished: Yes
Enclosed: Yes
Contiguous: Yes
Permitted: Yes
Wet space: Yes
Addition: No
Conversion: No

5 Floor 1 - Garage



Dimensions: 19'8" x 29'1"
Area: 572 sq. ft
Counted as living area: No

Heated: No
Finished: No
Enclosed: Yes
Contiguous: Yes
Permitted: Yes
Wet space: No
Addition: No
Conversion: No

209 Cedar Springs Place, Madison, Madison County, Alabama, United States, 35758

6 Floor 1 - Outdoor



Dimensions: 6'5" x 4'0"
Area: 26 sq. ft
Counted as living area: No

Heated: No
Finished: Yes
Enclosed: No
Contiguous: Yes
Permitted: Yes
Wet space: No
Addition: No
Conversion: No

7 Floor 1 - Utility



Dimensions: 10'0" x 5'6"
Area: 55 sq. ft
Counted as living area: Yes

Heated: Yes
Finished: Yes
Enclosed: Yes
Contiguous: Yes
Permitted: Yes
Wet space: No
Addition: No
Conversion: No

8 Floor 1 - Nook



Dimensions: 11'11" x 8'8"
Area: 101 sq. ft
Counted as living area: Yes

Heated: Yes
Finished: Yes
Enclosed: Yes
Contiguous: Yes
Permitted: Yes
Wet space: No
Addition: No
Conversion: No

209 Cedar Springs Place, Madison, Madison County, Alabama, United States, 35758

9 Floor 1 - Bath



Dimensions: 5'9" x 2'11"
Area: 17 sq. ft
Counted as living area: Yes

Heated: Yes
Finished: Yes
Enclosed: Yes
Contiguous: Yes
Permitted: Yes
Wet space: No
Addition: No
Conversion: No

10 Floor 1 - Hall



Dimensions: 6'6" x 4'5"
Area: 26 sq. ft
Counted as living area: Yes

Heated: Yes
Finished: Yes
Enclosed: Yes
Contiguous: Yes
Permitted: Yes
Wet space: No
Addition: No
Conversion: No

11 Floor 1 - Bedroom



Dimensions: 13'6" x 21'1"
Area: 253 sq. ft
Counted as living area: Yes

Heated: Yes
Finished: Yes
Enclosed: Yes
Contiguous: Yes
Permitted: Yes
Wet space: No
Addition: No
Conversion: No

209 Cedar Springs Place, Madison, Madison County, Alabama, United States, 35758

12 Floor 1 - Entry



Dimensions: 6'9" x 11'10"
Area: 110 sq. ft
Counted as living area: Yes

Heated: Yes
Finished: Yes
Enclosed: Yes
Contiguous: Yes
Permitted: Yes
Wet space: No
Addition: No
Conversion: No

13 Floor 1 - Kitchen



Dimensions: 11'8" x 13'11"
Area: 158 sq. ft
Counted as living area: Yes

Heated: Yes
Finished: Yes
Enclosed: Yes
Contiguous: Yes
Permitted: Yes
Wet space: No
Addition: No
Conversion: No

14 Floor 1 - Hall



Dimensions: 15'4" x 11'1"
Area: 102 sq. ft
Counted as living area: Yes

Heated: Yes
Finished: Yes
Enclosed: Yes
Contiguous: Yes
Permitted: Yes
Wet space: No
Addition: No
Conversion: No

209 Cedar Springs Place, Madison, Madison County, Alabama, United States, 35758

15 Floor 1 - Bedroom



Dimensions: 11'2" x 12'2"
Area: 136 sq. ft
Counted as living area: Yes

Heated: Yes
Finished: Yes
Enclosed: Yes
Contiguous: Yes
Permitted: Yes
Wet space: No
Addition: No
Conversion: No

16 Floor 1 - Outdoor



Dimensions: 41'8" x 18'8"
Area: 530 sq. ft
Counted as living area: No

Heated: No
Finished: Yes
Enclosed: No
Contiguous: Yes
Permitted: Yes
Wet space: No
Addition: No
Conversion: No

17 Floor 1 - Pantry



Dimensions: 5'0" x 7'0"
Area: 28 sq. ft
Counted as living area: Yes

Heated: Yes
Finished: Yes
Enclosed: Yes
Contiguous: Yes
Permitted: Yes
Wet space: No
Addition: No
Conversion: No

209 Cedar Springs Place, Madison, Madison County, Alabama, United States, 35758

18 Floor 1 - Bath



Dimensions: 9'7" x 10'6"
Area: 89 sq. ft
Counted as living area: Yes

Heated: Yes
Finished: Yes
Enclosed: Yes
Contiguous: Yes
Permitted: Yes
Wet space: Yes
Addition: No
Conversion: No

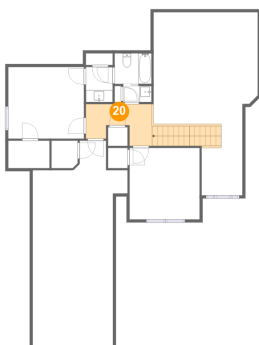
19 Floor 1 - Bedroom



Dimensions: 12'2" x 14'8"
Area: 152 sq. ft
Counted as living area: Yes

Heated: Yes
Finished: Yes
Enclosed: Yes
Contiguous: Yes
Permitted: Yes
Wet space: No
Addition: No
Conversion: No

20 Floor 2 - Hall

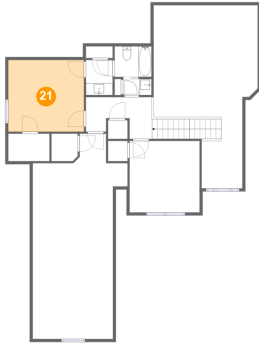


Dimensions: 10'11" x 6'11"
Area: 103 sq. ft
Counted as living area: Yes

Heated: Yes
Finished: Yes
Enclosed: Yes
Contiguous: Yes
Permitted: Yes
Wet space: No
Addition: No
Conversion: No

209 Cedar Springs Place, Madison, Madison County, Alabama, United States, 35758

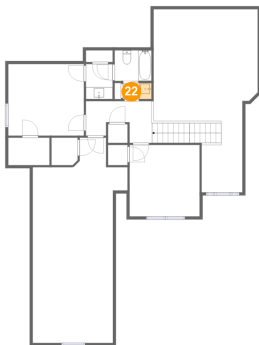
21 Floor 2 - Bedroom



Dimensions: 12'7" x 11'11"
Area: 150 sq. ft
Counted as living area: Yes

Heated: Yes
Finished: Yes
Enclosed: Yes
Contiguous: Yes
Permitted: Yes
Wet space: No
Addition: No
Conversion: No

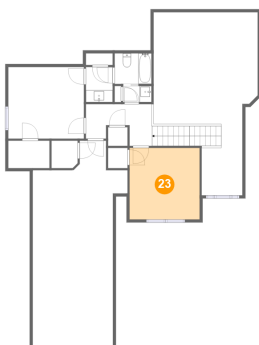
22 Floor 2 - Bath



Dimensions: 4'9" x 2'8"
Area: 13 sq. ft
Counted as living area: Yes

Heated: Yes
Finished: Yes
Enclosed: Yes
Contiguous: Yes
Permitted: Yes
Wet space: Yes
Addition: No
Conversion: No

23 Floor 2 - Bedroom

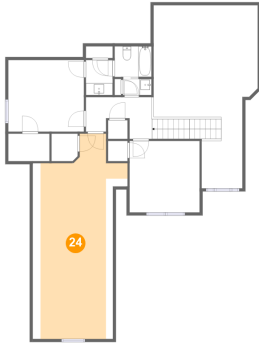


Dimensions: 11'8" x 11'11"
Area: 139 sq. ft
Counted as living area: Yes

Heated: Yes
Finished: Yes
Enclosed: Yes
Contiguous: Yes
Permitted: Yes
Wet space: No
Addition: No
Conversion: No

209 Cedar Springs Place, Madison, Madison County, Alabama, United States, 35758

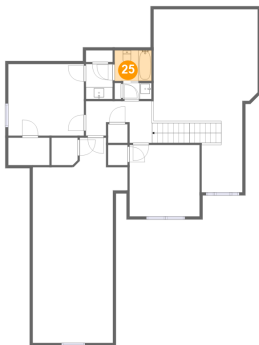
24 Floor 2 - Bedroom



Dimensions: 15'9" x 34'2"
Area: 350 sq. ft
Counted as living area: Yes

Heated: Yes
Finished: Yes
Enclosed: Yes
Contiguous: Yes
Permitted: Yes
Wet space: No
Addition: No
Conversion: No

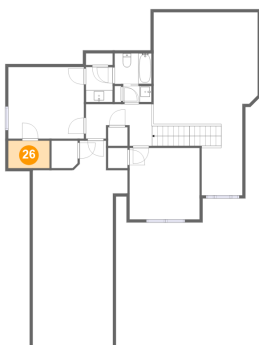
25 Floor 2 - Bath



Dimensions: 6'2" x 5'1"
Area: 31 sq. ft
Counted as living area: Yes

Heated: Yes
Finished: Yes
Enclosed: Yes
Contiguous: Yes
Permitted: Yes
Wet space: Yes
Addition: No
Conversion: No

26 Floor 2 - Cl

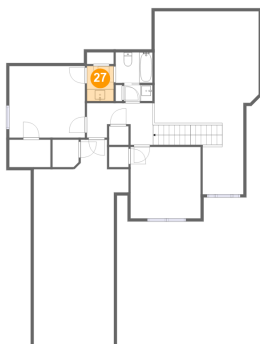


Dimensions: 6'10" x 4'7"
Area: 31 sq. ft
Counted as living area: Yes

Heated: Yes
Finished: Yes
Enclosed: Yes
Contiguous: Yes
Permitted: Yes
Wet space: No
Addition: No
Conversion: No

209 Cedar Springs Place, Madison, Madison County, Alabama, United States, 35758

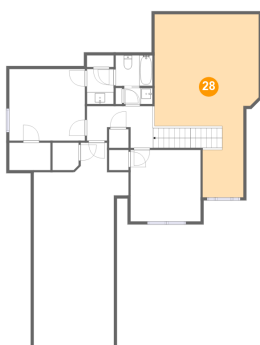
27 Floor 2 - Bath



Dimensions: 4'5" x 5'10"
Area: 26 sq. ft
Counted as living area: Yes

Heated: Yes
Finished: Yes
Enclosed: Yes
Contiguous: Yes
Permitted: Yes
Wet space: Yes
Addition: No
Conversion: No

28 Floor 2 - Open To Below



Dimensions: 17'4" x 30'6"
Area: 380 sq. ft
Counted as living area: No

Heated: No
Finished: No
Enclosed: No
Contiguous: Yes
Permitted: No
Wet space: No
Addition: No
Conversion: No