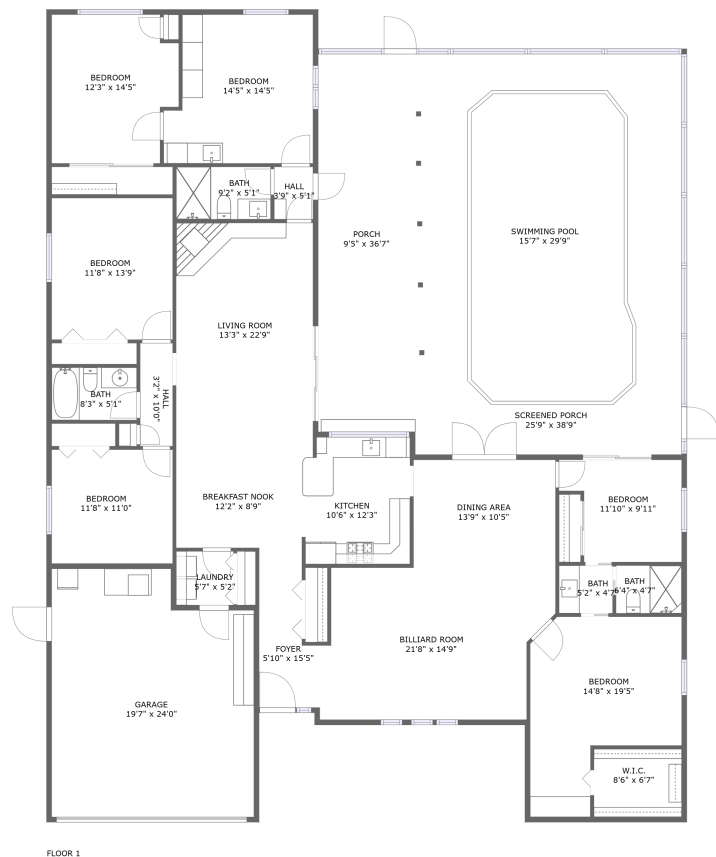



Home report

1623 El Tair Trail, Coachman Ridge, Clearwater, Pinellas County,
Florida, United States, 33765



Total GLA: 2643 sq. ft
Floor 1: 2643 sq. ft
Excluded: Garage 465 sq. ft, Screened porch 593 sq. ft, Porch 343 sq. ft

Property summary

 **1** Floors

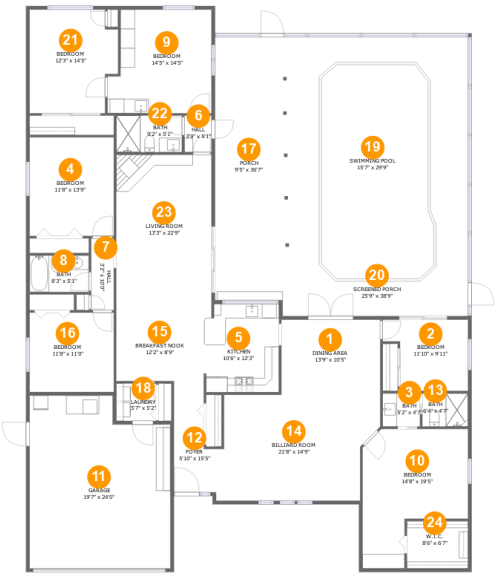
 **6** Bedrooms

 **3** Bathrooms

 **1** Garages

Home report

1623 El Tair Trail, Coachman Ridge, Clearwater, Pinellas County, Florida, United States, 33765



Room dimensions

Floor 1 Total:2643sqft Excluded: 1401sqft

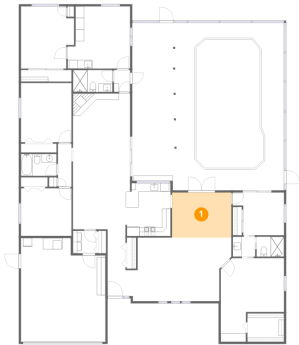
#		Max Dimensions	sqft	Included
1	Dining Area	13'9" x 10'5"	143 sq. ft	Yes
2	Bedroom	11'10" x 9'11"	101 sq. ft	Yes
3	Bath	5'2" x 4'7"	24 sq. ft	Yes
4	Bedroom	11'8" x 13'9"	161 sq. ft	Yes
5	Kitchen	10'6" x 12'3"	125 sq. ft	Yes
6	Hall	3'9" x 5'1"	19 sq. ft	Yes
7	Hall	3'2" x 10'0"	31 sq. ft	Yes
8	Bath	8'3" x 5'1"	42 sq. ft	Yes
9	Bedroom	14'5" x 14'5"	191 sq. ft	Yes
10	Bedroom	14'8" x 19'5"	220 sq. ft	Yes
11	Garage	19'7" x 24'0"	438 sq. ft	No

Home report

**1623 El Tair Trail, Coachman Ridge, Clearwater, Pinellas County,
Florida, United States, 33765**

#		Max Dimensions	sqft	Included
12	Foyer	5'10" x 15'5"	74 sq. ft	Yes
13	Bath	6'4" x 4'7"	29 sq. ft	Yes
14	Billiard Room	21'8" x 14'9"	303 sq. ft	Yes
15	Breakfast Nook	12'2" x 8'9"	106 sq. ft	Yes
16	Bedroom	11'8" x 11'0"	129 sq. ft	Yes
17	Porch	9'5" x 36'7"	344 sq. ft	No
18	Laundry	5'7" x 5'2"	29 sq. ft	Yes
19	Swimming Pool	15'7" x 29'9"	439 sq. ft	No
20	Screened Porch	25'9" x 38'9"	1000 sq. ft	No
21	Bedroom	12'3" x 14'5"	162 sq. ft	Yes
22	Bath	9'2" x 5'1"	46 sq. ft	Yes
23	Living Room	13'3" x 22'9"	301 sq. ft	Yes
24	W.I.C.	8'6" x 6'7"	56 sq. ft	Yes

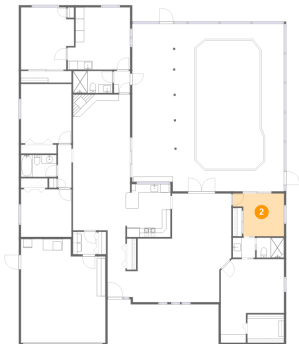
1 Floor 1 - Dining Area



Max Dimensions: 13'9" x 10'5"
Calculated Area: 143 sq. ft
Included: Yes

Heated: Yes
Finished: Yes
Enclosed: Yes
Contiguous: Yes
Permitted: Yes
Wet space: No
Addition: No
Conversion: No

2 Floor 1 - Bedroom

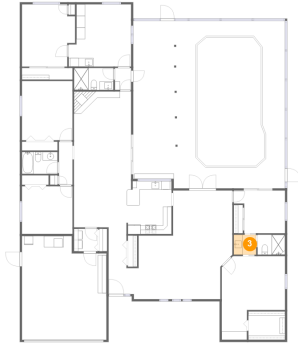


Max Dimensions: 11'10" x 9'11"
Calculated Area: 101 sq. ft
Included: Yes

Heated: Yes
Finished: Yes
Enclosed: Yes
Contiguous: Yes
Permitted: Yes
Wet space: No
Addition: No
Conversion: No

1623 El Tair Trail, Coachman Ridge, Clearwater, Pinellas County,
Florida, United States, 33765

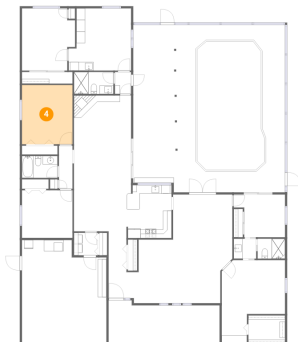
3 Floor 1 - Bath



Max Dimensions: 5'2" x 4'7"
Calculated Area: 24 sq. ft
Included: Yes

Heated: Yes
Finished: Yes
Enclosed: Yes
Contiguous: Yes
Permitted: Yes
Wet space: Yes
Addition: No
Conversion: No

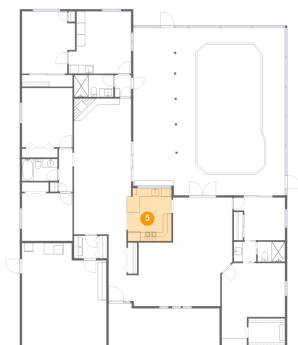
4 Floor 1 - Bedroom



Max Dimensions: 11'8" x 13'9"
Calculated Area: 161 sq. ft
Included: Yes

Heated: Yes
Finished: Yes
Enclosed: Yes
Contiguous: Yes
Permitted: Yes
Wet space: No
Addition: No
Conversion: No

5 Floor 1 - Kitchen

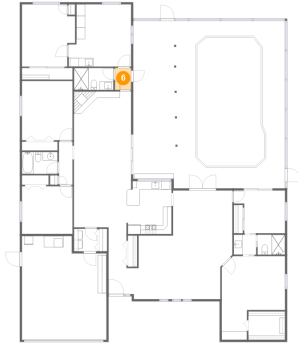


Max Dimensions: 10'6" x 12'3"
Calculated Area: 125 sq. ft
Included: Yes

Heated: Yes
Finished: Yes
Enclosed: Yes
Contiguous: Yes
Permitted: Yes
Wet space: No
Addition: No
Conversion: No

1623 El Tair Trail, Coachman Ridge, Clearwater, Pinellas County,
Florida, United States, 33765

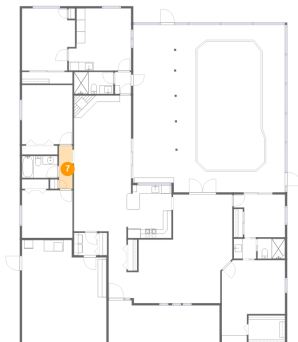
6 Floor 1 - Hall



Max Dimensions: 3'9" x 5'1"
Calculated Area: 19 sq. ft
Included: Yes

Heated: Yes
Finished: Yes
Enclosed: Yes
Contiguous: Yes
Permitted: Yes
Wet space: No
Addition: No
Conversion: No

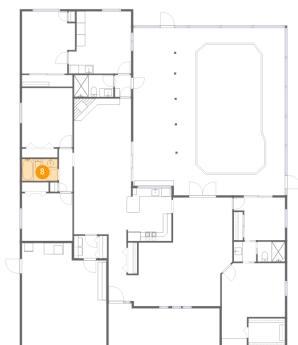
7 Floor 1 - Hall



Max Dimensions: 3'2" x 10'0"
Calculated Area: 31 sq. ft
Included: Yes

Heated: Yes
Finished: Yes
Enclosed: Yes
Contiguous: Yes
Permitted: Yes
Wet space: No
Addition: No
Conversion: No

8 Floor 1 - Bath

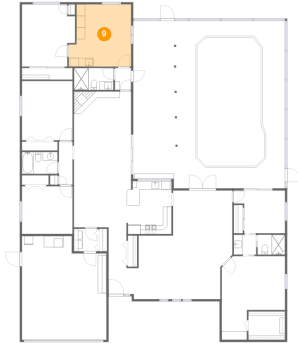


Max Dimensions: 8'3" x 5'1"
Calculated Area: 42 sq. ft
Included: Yes

Heated: Yes
Finished: Yes
Enclosed: Yes
Contiguous: Yes
Permitted: Yes
Wet space: Yes
Addition: No
Conversion: No

1623 El Tair Trail, Coachman Ridge, Clearwater, Pinellas County,
Florida, United States, 33765

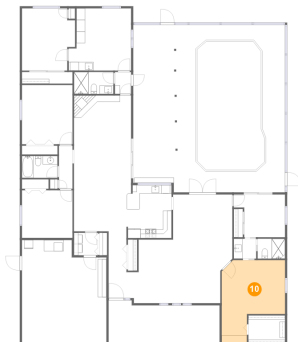
9 Floor 1 - Bedroom



Max Dimensions: 14'5" x 14'5"
Calculated Area: 191 sq. ft
Included: Yes

Heated: Yes
Finished: Yes
Enclosed: Yes
Contiguous: Yes
Permitted: Yes
Wet space: No
Addition: No
Conversion: No

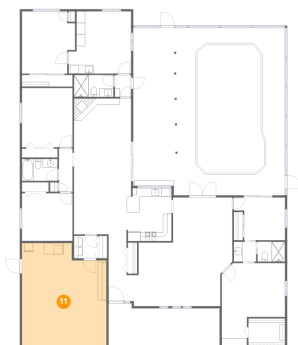
10 Floor 1 - Bedroom



Max Dimensions: 14'8" x 19'5"
Calculated Area: 220 sq. ft
Included: Yes

Heated: Yes
Finished: Yes
Enclosed: Yes
Contiguous: Yes
Permitted: Yes
Wet space: No
Addition: No
Conversion: No

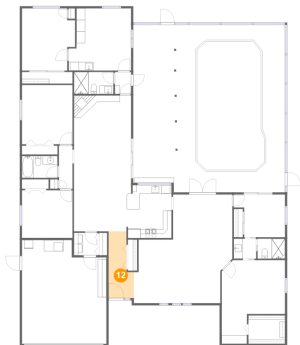
11 Floor 1 - Garage



Max Dimensions: 19'7" x 24'0"
Calculated Area: 438 sq. ft
Included: No

Heated: No
Finished: No
Enclosed: Yes
Contiguous: Yes
Permitted: Yes
Wet space: No
Addition: No
Conversion: No

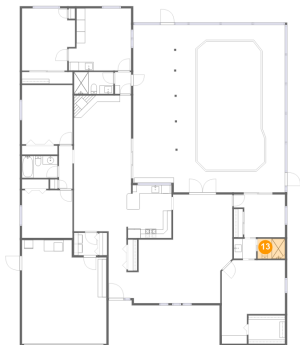
12 Floor 1 - Foyer



Max Dimensions: 5'10" x 15'5"
Calculated Area: 74 sq. ft
Included: Yes

Heated: Yes
Finished: Yes
Enclosed: Yes
Contiguous: Yes
Permitted: Yes
Wet space: No
Addition: No
Conversion: No

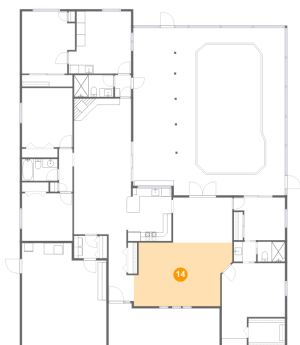
13 Floor 1 - Bath



Max Dimensions: 6'4" x 4'7"
Calculated Area: 29 sq. ft
Included: Yes

Heated: Yes
Finished: Yes
Enclosed: Yes
Contiguous: Yes
Permitted: Yes
Wet space: Yes
Addition: No
Conversion: No

14 Floor 1 - Billiard Room

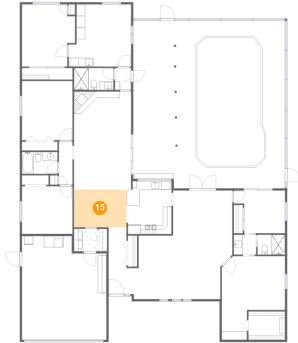


Max Dimensions: 21'8" x 14'9"
Calculated Area: 303 sq. ft
Included: Yes

Heated: Yes
Finished: Yes
Enclosed: Yes
Contiguous: Yes
Permitted: Yes
Wet space: No
Addition: No
Conversion: No

1623 El Tair Trail, Coachman Ridge, Clearwater, Pinellas County,
Florida, United States, 33765

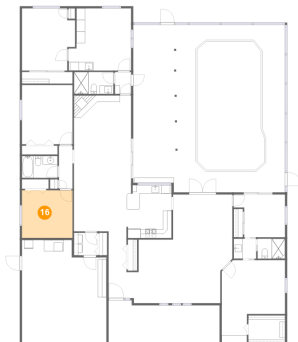
15 Floor 1 - Breakfast Nook



Max Dimensions: 12'2" x 8'9"
Calculated Area: 106 sq. ft
Included: Yes

Heated: Yes
Finished: Yes
Enclosed: Yes
Contiguous: Yes
Permitted: Yes
Wet space: No
Addition: No
Conversion: No

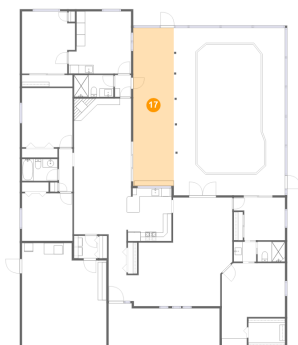
16 Floor 1 - Bedroom



Max Dimensions: 11'8" x 11'0"
Calculated Area: 129 sq. ft
Included: Yes

Heated: Yes
Finished: Yes
Enclosed: Yes
Contiguous: Yes
Permitted: Yes
Wet space: No
Addition: No
Conversion: No

17 Floor 1 - Porch

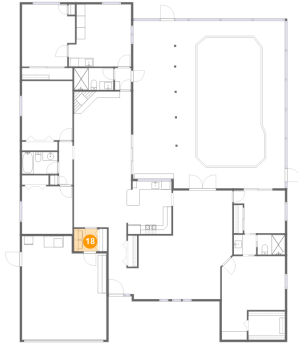


Max Dimensions: 9'5" x 36'7"
Calculated Area: 344 sq. ft
Included: No

Heated: No
Finished: Yes
Enclosed: No
Contiguous: Yes
Permitted: Yes
Wet space: No
Addition: No
Conversion: No

1623 El Tair Trail, Coachman Ridge, Clearwater, Pinellas County,
Florida, United States, 33765

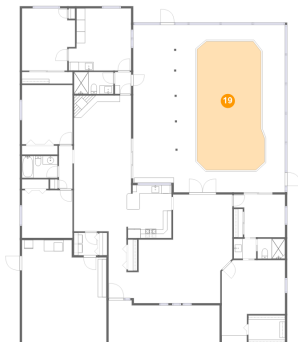
18 Floor 1 - Laundry



Max Dimensions: 5'7" x 5'2"
Calculated Area: 29 sq. ft
Included: Yes

Heated: Yes
Finished: Yes
Enclosed: Yes
Contiguous: Yes
Permitted: Yes
Wet space: No
Addition: No
Conversion: No

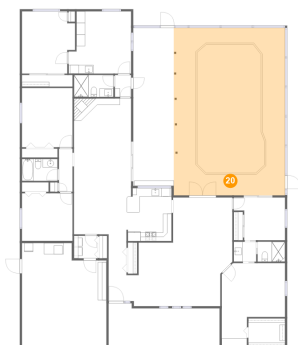
19 Floor 1 - Swimming Pool



Max Dimensions: 15'7" x
29'9"
Calculated Area: 439 sq. ft
Included: No

Heated: No
Finished: No
Enclosed: No
Contiguous:
Yes
Permitted: No
Wet space: No
Addition: No
Conversion: No

20 Floor 1 - Screened Porch

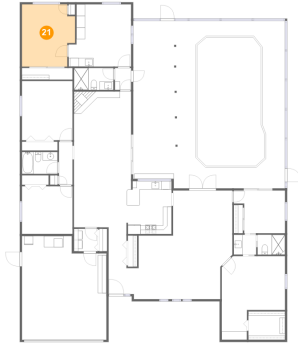


Max Dimensions: 25'9" x
38'9"
Calculated Area: 1000 sq. ft
Included: No

Heated: No
Finished: Yes
Enclosed: No
Contiguous:
Yes
Permitted: Yes
Wet space: No
Addition: No
Conversion: No

1623 El Tair Trail, Coachman Ridge, Clearwater, Pinellas County,
Florida, United States, 33765

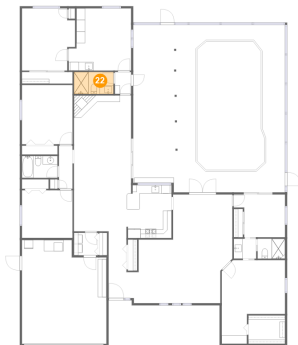
21 Floor 1 - Bedroom



Max Dimensions: 12'3" x 14'5"
Calculated Area: 162 sq. ft
Included: Yes

Heated: Yes
Finished: Yes
Enclosed: Yes
Contiguous: Yes
Permitted: Yes
Wet space: No
Addition: No
Conversion: No

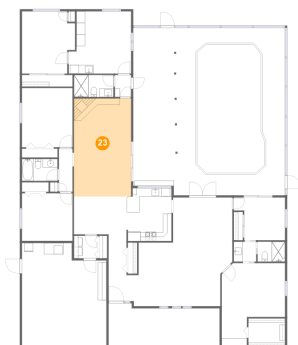
22 Floor 1 - Bath



Max Dimensions: 9'2" x 5'1"
Calculated Area: 46 sq. ft
Included: Yes

Heated: Yes
Finished: Yes
Enclosed: Yes
Contiguous: Yes
Permitted: Yes
Wet space: Yes
Addition: No
Conversion: No

23 Floor 1 - Living Room

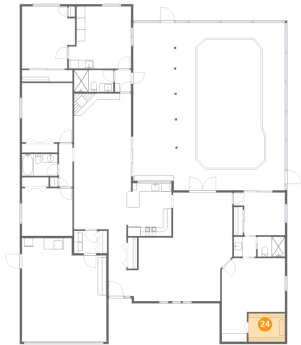


Max Dimensions: 13'3" x 22'9"
Calculated Area: 301 sq. ft
Included: Yes

Heated: Yes
Finished: Yes
Enclosed: Yes
Contiguous: Yes
Permitted: Yes
Wet space: No
Addition: No
Conversion: No

1623 El Tair Trail, Coachman Ridge, Clearwater, Pinellas County,
Florida, United States, 33765

24 Floor 1 - W.I.C.



Max Dimensions: 8'6" x 6'7"
Calculated Area: 56 sq. ft
Included: Yes

Heated: Yes
Finished: Yes
Enclosed: Yes
Contiguous: Yes
Permitted: Yes
Wet space: No
Addition: No
Conversion: No