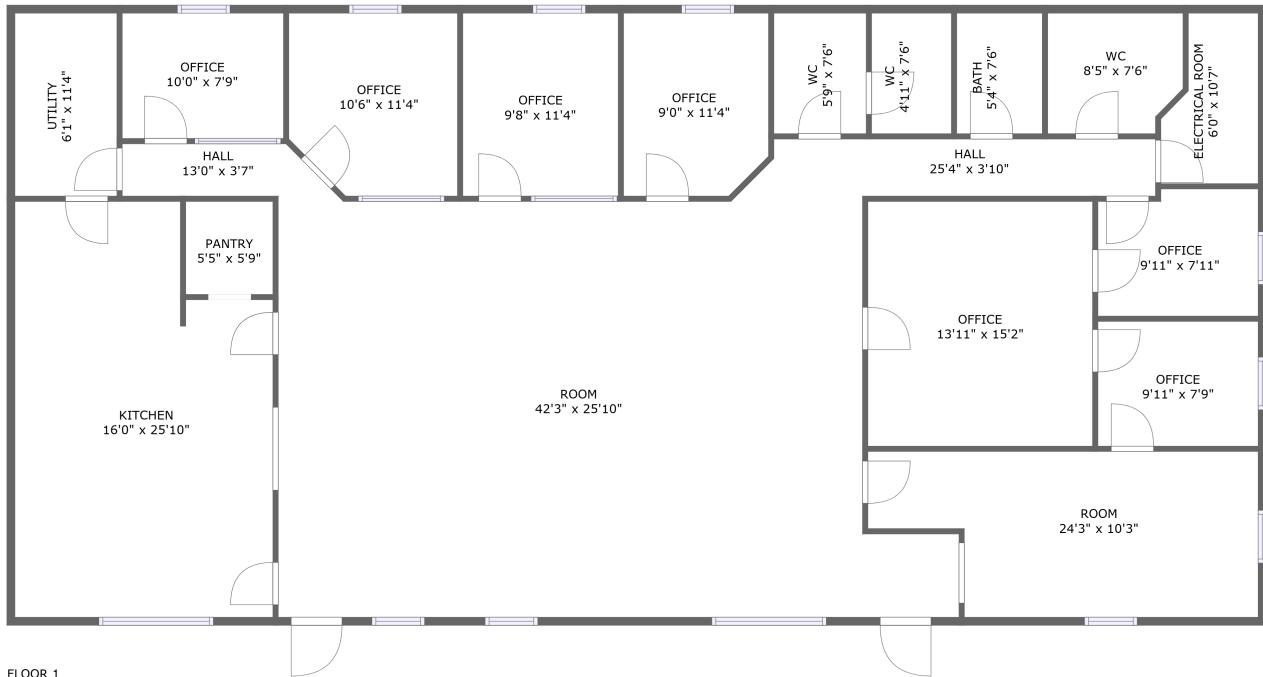


**130 Louisa Avenue, Mineral, Louisa County, Virginia,
United States, 23117**



Property summary

0 Garages

0 Bedrooms

0 Bathrooms

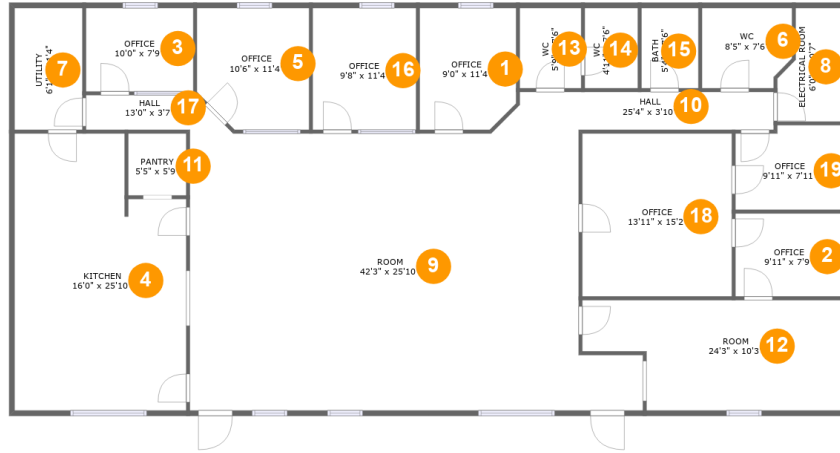
0 Half baths

1 Floors

2,945
Gross living area sqft

3,007
Total sqft

130 Louisa Avenue, Mineral, Louisa County, Virginia, United States, 23117



Room dimensions

Floor 1

Total sqft: 3007 Living area: 2945

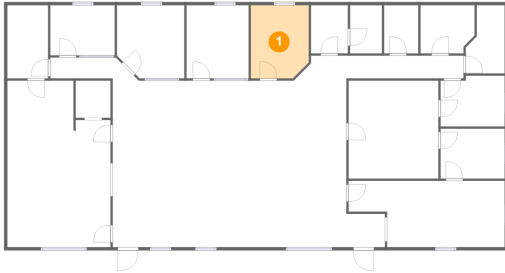
#		Dimensions	sqft	Counted as living area
1	Office	9'0" x 11'4"	99 sq. ft	Yes
2	Office	9'11" x 7'9"	77 sq. ft	Yes
3	Office	10'0" x 7'9"	78 sq. ft	Yes
4	Kitchen	16'0" x 25'10"	379 sq. ft	Yes
5	Office	10'6" x 11'4"	112 sq. ft	Yes
6	WC	8'5" x 7'6"	59 sq. ft	Yes
7	Utility	6'1" x 11'4"	72 sq. ft	Yes
8	Electrical Room	6'0" x 10'7"	54 sq. ft	No
9	Room	42'3" x 25'10"	966 sq. ft	Yes
10	Hall	25'4" x 3'10"	89 sq. ft	Yes
11	Pantry	5'5" x 5'9"	31 sq. ft	Yes

**130 Louisa Avenue, Mineral, Louisa County, Virginia,
United States, 23117**

#		Dimensions	sqft	Counted as living area
12	Room	24'3" x 10'3"	217 sq. ft	Yes
13	WC	5'9" x 7'6"	43 sq. ft	Yes
14	WC	4'11" x 7'6"	37 sq. ft	Yes
15	Bath	5'4" x 7'6"	40 sq. ft	Yes
16	Office	9'8" x 11'4"	109 sq. ft	Yes
17	Hall	13'0" x 3'7"	39 sq. ft	Yes
18	Office	13'11" x 15'2"	212 sq. ft	Yes
19	Office	9'11" x 7'11"	75 sq. ft	Yes

130 Louisa Avenue, Mineral, Louisa County, Virginia, United States, 23117

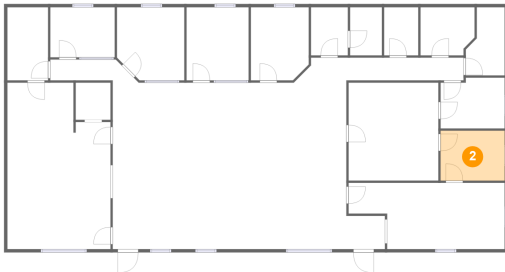
1 Floor 1 - Office



Dimensions: 9'0" x 11'4"
Area: 99 sq. ft
Counted as living area: Yes

Heated: Yes
Finished: Yes
Enclosed: Yes
Contiguous: Yes
Permitted: Yes
Wet space: No
Addition: No
Conversion: No

2 Floor 1 - Office

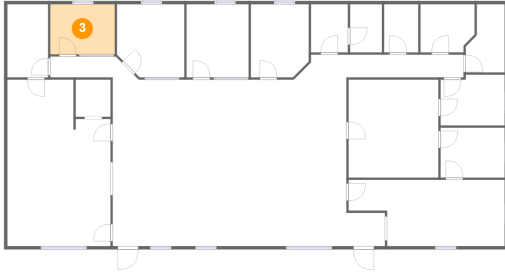


Dimensions: 9'11" x 7'9"
Area: 77 sq. ft
Counted as living area: Yes

Heated: Yes
Finished: Yes
Enclosed: Yes
Contiguous: Yes
Permitted: Yes
Wet space: No
Addition: No
Conversion: No

130 Louisa Avenue, Mineral, Louisa County, Virginia,
United States, 23117

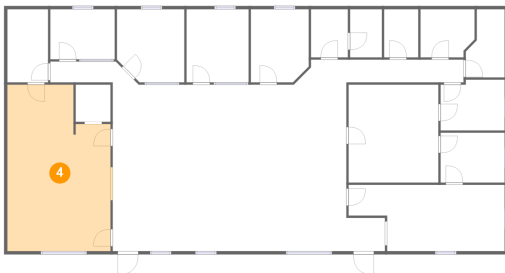
3 Floor 1 - Office



Dimensions: 10'0" x 7'9"
Area: 78 sq. ft
Counted as living area: Yes

Heated: Yes
Finished: Yes
Enclosed: Yes
Contiguous: Yes
Permitted: Yes
Wet space: No
Addition: No
Conversion: No

4 Floor 1 - Kitchen



Dimensions: 16'0" x 25'10"
Area: 379 sq. ft
Counted as living area: Yes

Heated: Yes
Finished: Yes
Enclosed: Yes
Contiguous: Yes
Permitted: Yes
Wet space: No
Addition: No
Conversion: No

5 Floor 1 - Office

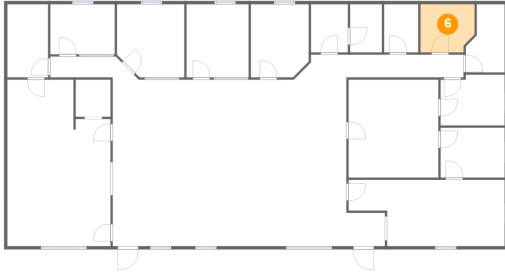


Dimensions: 10'6" x 11'4"
Area: 112 sq. ft
Counted as living area: Yes

Heated: Yes
Finished: Yes
Enclosed: Yes
Contiguous: Yes
Permitted: Yes
Wet space: No
Addition: No
Conversion: No

130 Louisa Avenue, Mineral, Louisa County, Virginia,
United States, 23117

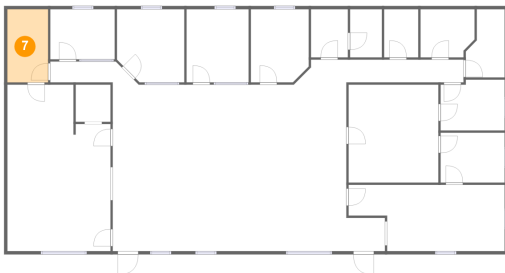
6 Floor 1 - WC



Dimensions: 8'5" x 7'6"
Area: 59 sq. ft
Counted as living area: Yes

Heated: Yes
Finished: Yes
Enclosed: Yes
Contiguous: Yes
Permitted: Yes
Wet space: Yes
Addition: No
Conversion: No

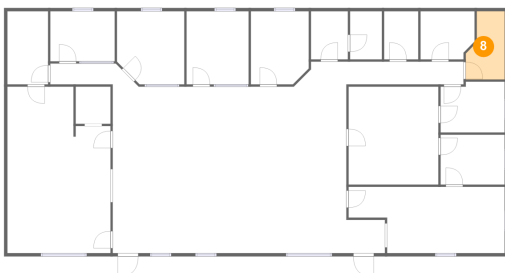
7 Floor 1 - Utility



Dimensions: 6'1" x 11'4"
Area: 72 sq. ft
Counted as living area: Yes

Heated: Yes
Finished: Yes
Enclosed: Yes
Contiguous: Yes
Permitted: Yes
Wet space: No
Addition: No
Conversion: No

8 Floor 1 - Electrical Room

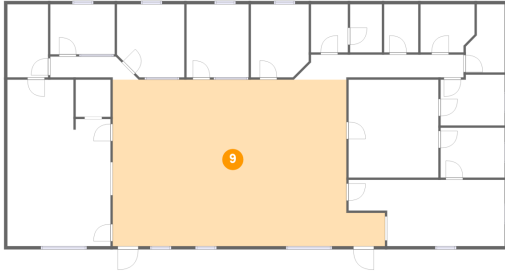


Dimensions: 6'0" x 10'7"
Area: 54 sq. ft
Counted as living area: No

Heated: No
Finished: No
Enclosed: Yes
Contiguous: Yes
Permitted: Yes
Wet space: No
Addition: No
Conversion: No

130 Louisa Avenue, Mineral, Louisa County, Virginia,
United States, 23117

9 Floor 1 - Room



Dimensions: 42'3" x 25'10"
Area: 966 sq. ft
Counted as living area: Yes

Heated: Yes
Finished: Yes
Enclosed: Yes
Contiguous: Yes
Permitted: Yes
Wet space: No
Addition: No
Conversion: No

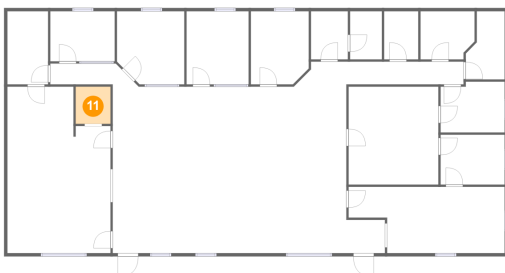
10 Floor 1 - Hall



Dimensions: 25'4" x 3'10"
Area: 89 sq. ft
Counted as living area: Yes

Heated: Yes
Finished: Yes
Enclosed: Yes
Contiguous: Yes
Permitted: Yes
Wet space: No
Addition: No
Conversion: No

11 Floor 1 - Pantry

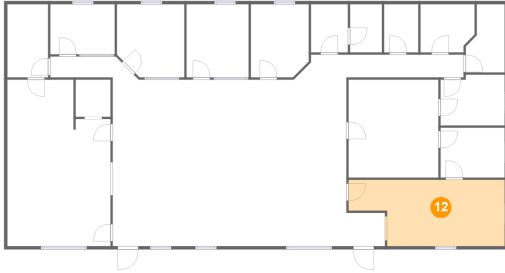


Dimensions: 5'5" x 5'9"
Area: 31 sq. ft
Counted as living area: Yes

Heated: Yes
Finished: Yes
Enclosed: Yes
Contiguous: Yes
Permitted: Yes
Wet space: No
Addition: No
Conversion: No

130 Louisa Avenue, Mineral, Louisa County, Virginia,
United States, 23117

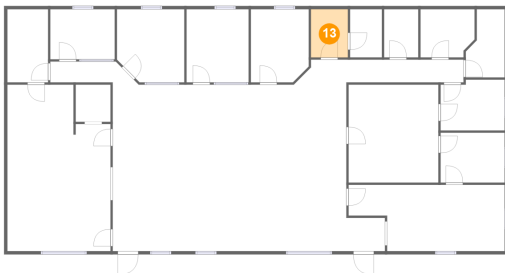
12 Floor 1 - Room



Dimensions: 24'3" x 10'3"
Area: 217 sq. ft
Counted as living area: Yes

Heated: Yes
Finished: Yes
Enclosed: Yes
Contiguous: Yes
Permitted: Yes
Wet space: No
Addition: No
Conversion: No

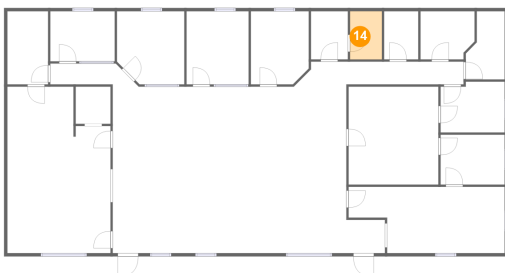
13 Floor 1 - WC



Dimensions: 5'9" x 7'6"
Area: 43 sq. ft
Counted as living area: Yes

Heated: Yes
Finished: Yes
Enclosed: Yes
Contiguous: Yes
Permitted: Yes
Wet space: Yes
Addition: No
Conversion: No

14 Floor 1 - WC



Dimensions: 4'11" x 7'6"
Area: 37 sq. ft
Counted as living area: Yes

Heated: Yes
Finished: Yes
Enclosed: Yes
Contiguous: Yes
Permitted: Yes
Wet space: Yes
Addition: No
Conversion: No

130 Louisa Avenue, Mineral, Louisa County, Virginia,
United States, 23117

15 Floor 1 - Bath



Dimensions: 5'4" x 7'6"
Area: 40 sq. ft
Counted as living area: Yes

Heated: Yes
Finished: Yes
Enclosed: Yes
Contiguous: Yes
Permitted: Yes
Wet space: Yes
Addition: No
Conversion: No

16 Floor 1 - Office



Dimensions: 9'8" x 11'4"
Area: 109 sq. ft
Counted as living area: Yes

Heated: Yes
Finished: Yes
Enclosed: Yes
Contiguous: Yes
Permitted: Yes
Wet space: No
Addition: No
Conversion: No

17 Floor 1 - Hall

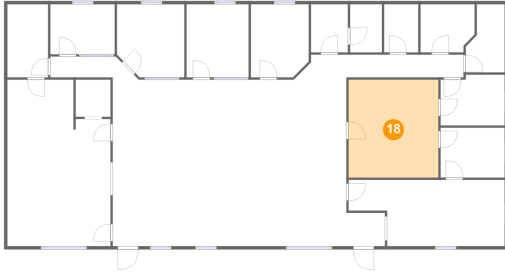


Dimensions: 13'0" x 3'7"
Area: 39 sq. ft
Counted as living area: Yes

Heated: Yes
Finished: Yes
Enclosed: Yes
Contiguous: Yes
Permitted: Yes
Wet space: No
Addition: No
Conversion: No

**130 Louisa Avenue, Mineral, Louisa County, Virginia,
United States, 23117**

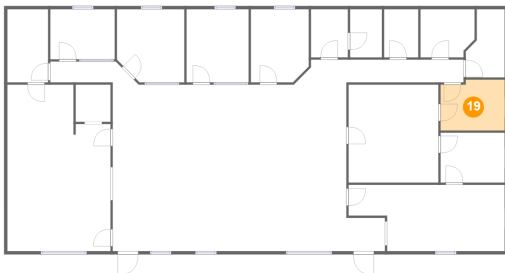
18 Floor 1 - Office



Dimensions: 13'11" x 15'2"
Area: 212 sq. ft
Counted as living area: Yes

Heated: Yes
Finished: Yes
Enclosed: Yes
Contiguous: Yes
Permitted: Yes
Wet space: No
Addition: No
Conversion: No

19 Floor 1 - Office



Dimensions: 9'11" x 7'11"
Area: 75 sq. ft
Counted as living area: Yes

Heated: Yes
Finished: Yes
Enclosed: Yes
Contiguous: Yes
Permitted: Yes
Wet space: No
Addition: No
Conversion: No