

Home report

228 West Washington Street, Shelbyville, Shelby County,
Indiana, United States, 46176



Total Area: 1980 sq. ft

Floor 1: 1216 sq. ft, Floor 2: 764 sq. ft

Excluded: Outdoor Deck 177 sq. ft, Outdoor Porch 85 sq. ft, Fireplace 11 sq. ft, Undefined 16 sq. ft, Low Ceiling 13 sq. ft, Walls: 144 sq. ft

Property summary

 **2** Floors

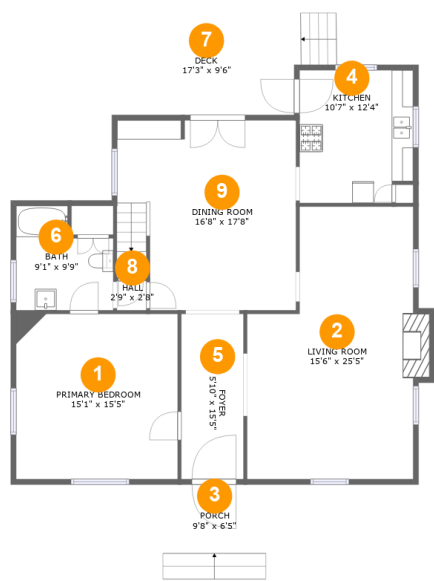
 **4** Bedrooms

 **1** Bathrooms

 **1** Half baths

Home report

228 West Washington Street, Shelbyville, Shelby County, Indiana, United States, 46176



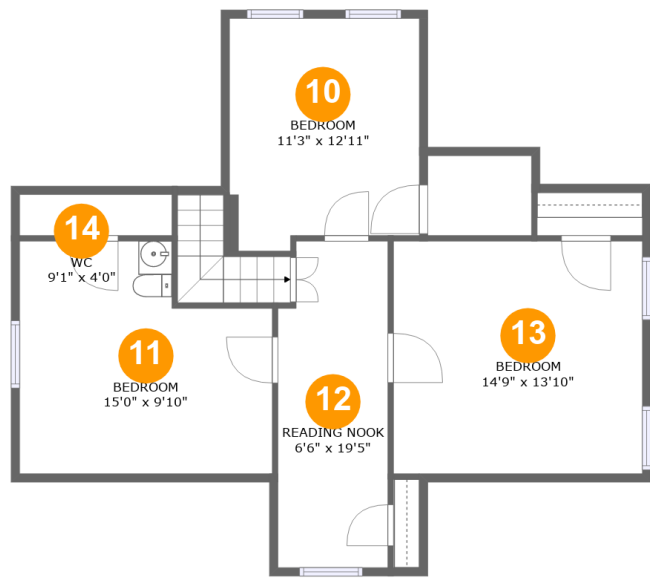
Room dimensions

Floor 1 Total:1216sqft Excluded: 273sqft

#		Max Dimensions	sqft	Included
1	Primary Bedroom	15'1" x 15'5"	232 sq. ft	Yes
2	Living Room	15'6" x 25'5"	353 sq. ft	Yes
3	Porch	9'8" x 6'5"	85 sq. ft	No
4	Kitchen	10'7" x 12'4"	127 sq. ft	Yes
5	Foyer	5'10" x 15'5"	89 sq. ft	Yes
6	Bath	9'1" x 9'9"	75 sq. ft	Yes
7	Deck	17'3" x 9'6"	177 sq. ft	No
8	Hall	2'9" x 2'8"	8 sq. ft	Yes
9	Dining Room	16'8" x 17'8"	277 sq. ft	Yes

Home report

228 West Washington Street, Shelbyville, Shelby County,
Indiana, United States, 46176



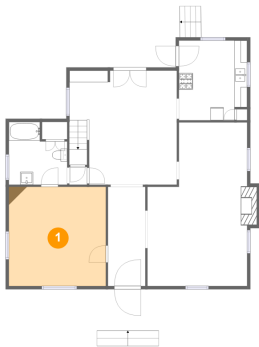
Room dimensions

Floor 2 Total:764sqft Excluded: 29sqft

#		Max Dimensions	sqft	Included
10	Bedroom	11'3" x 12'11"	149 sq. ft	Yes
11	Bedroom	15'0" x 9'10"	147 sq. ft	Yes
12	Reading Nook	6'6" x 19'5"	122 sq. ft	Yes
13	Bedroom	14'9" x 13'10"	204 sq. ft	Yes
14	WC	9'1" x 4'0"	36 sq. ft	Yes

228 West Washington Street, Shelbyville, Shelby County,
Indiana, United States, 46176

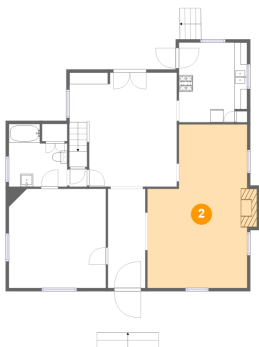
1 Floor 1 - Primary Bedroom



Max Dimensions: 15'1" x 15'5"
Calculated Area: 232 sq. ft
Included: Yes

Heated: Yes
Finished: Yes
Enclosed: Yes
Contiguous: Yes
Permitted: Yes
Wet space: No
Addition: No
Conversion: No

2 Floor 1 - Living Room



Max Dimensions: 15'6" x 25'5"
Calculated Area: 353 sq. ft
Included: Yes

Heated: Yes
Finished: Yes
Enclosed: Yes
Contiguous: Yes
Permitted: Yes
Wet space: No
Addition: No
Conversion: No

228 West Washington Street, Shelbyville, Shelby County,
Indiana, United States, 46176

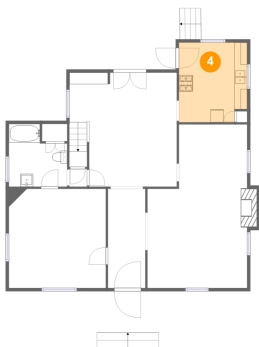
3 Floor 1 - Porch



Max Dimensions: 9'8" x 6'5"
Calculated Area: 85 sq. ft
Included: No

Heated: No
Finished: Yes
Enclosed: No
Contiguous: Yes
Permitted: Yes
Wet space: No
Addition: No
Conversion: No

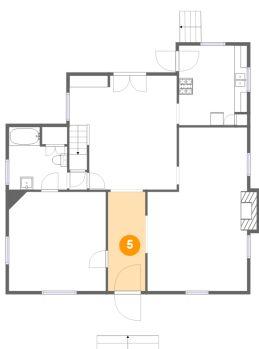
4 Floor 1 - Kitchen



Max Dimensions: 10'7" x 12'4"
Calculated Area: 127 sq. ft
Included: Yes

Heated: Yes
Finished: Yes
Enclosed: Yes
Contiguous: Yes
Permitted: Yes
Wet space: No
Addition: No
Conversion: No

5 Floor 1 - Foyer

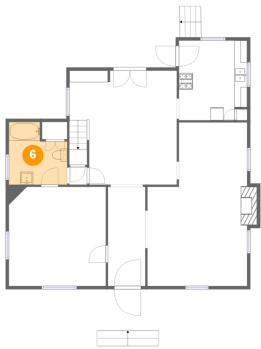


Max Dimensions: 5'10" x 15'5"
Calculated Area: 89 sq. ft
Included: Yes

Heated: Yes
Finished: Yes
Enclosed: Yes
Contiguous: Yes
Permitted: Yes
Wet space: No
Addition: No
Conversion: No

228 West Washington Street, Shelbyville, Shelby County,
Indiana, United States, 46176

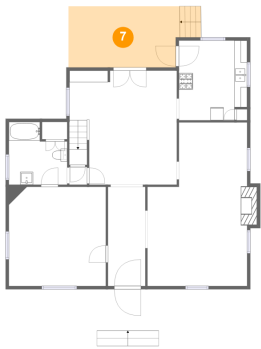
6 Floor 1 - Bath



Max Dimensions: 9'1" x 9'9"
Calculated Area: 75 sq. ft
Included: Yes

Heated: Yes
Finished: Yes
Enclosed: Yes
Contiguous: Yes
Permitted: Yes
Wet space: Yes
Addition: No
Conversion: No

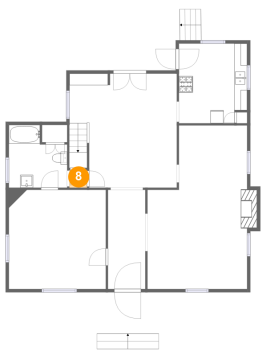
7 Floor 1 - Deck



Max Dimensions: 17'3" x 9'6"
Calculated Area: 177 sq. ft
Included: No

Heated: No
Finished: Yes
Enclosed: No
Contiguous: Yes
Permitted: Yes
Wet space: No
Addition: No
Conversion: No

8 Floor 1 - Hall

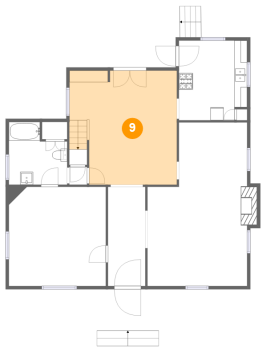


Max Dimensions: 2'9" x 2'8"
Calculated Area: 8 sq. ft
Included: Yes

Heated: Yes
Finished: Yes
Enclosed: Yes
Contiguous: Yes
Permitted: Yes
Wet space: No
Addition: No
Conversion: No

228 West Washington Street, Shelbyville, Shelby County,
Indiana, United States, 46176

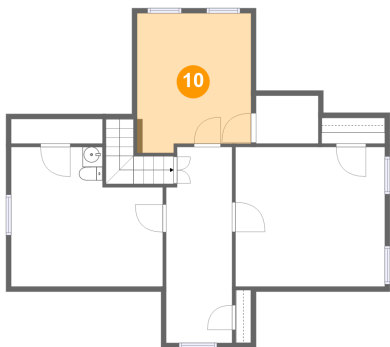
9 Floor 1 - Dining Room



Max Dimensions: 16'8" x 17'8"
Calculated Area: 277 sq. ft
Included: Yes

Heated: Yes
Finished: Yes
Enclosed: Yes
Contiguous: Yes
Permitted: Yes
Wet space: No
Addition: No
Conversion: No

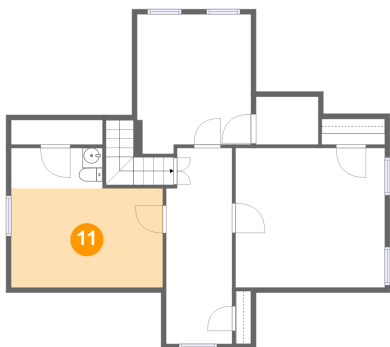
10 Floor 2 - Bedroom



Max Dimensions: 11'3" x 12'11"
Calculated Area: 149 sq. ft
Included: Yes

Heated: Yes
Finished: Yes
Enclosed: Yes
Contiguous: Yes
Permitted: Yes
Wet space: No
Addition: No
Conversion: No

11 Floor 2 - Bedroom

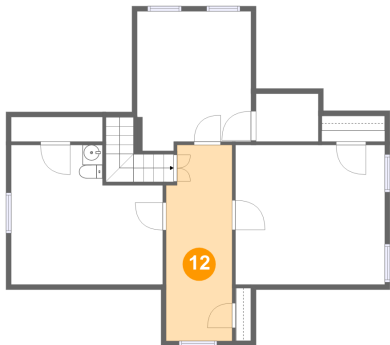


Max Dimensions: 15'0" x 9'10"
Calculated Area: 147 sq. ft
Included: Yes

Heated: Yes
Finished: Yes
Enclosed: Yes
Contiguous: Yes
Permitted: Yes
Wet space: No
Addition: No
Conversion: No

228 West Washington Street, Shelbyville, Shelby County,
Indiana, United States, 46176

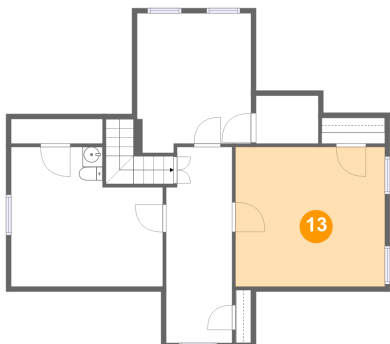
12 Floor 2 - Reading Nook



Max Dimensions: 6'6" x 19'5"
Calculated Area: 122 sq. ft
Included: Yes

Heated: Yes
Finished: Yes
Enclosed: Yes
Contiguous: Yes
Permitted: Yes
Wet space: No
Addition: No
Conversion: No

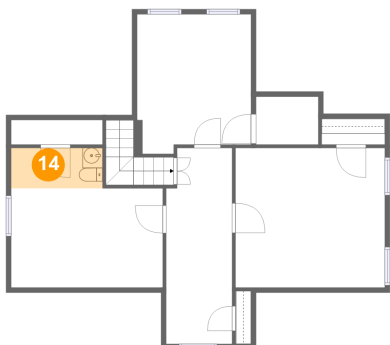
13 Floor 2 - Bedroom



Max Dimensions: 14'9" x 13'10"
Calculated Area: 204 sq. ft
Included: Yes

Heated: Yes
Finished: Yes
Enclosed: Yes
Contiguous: Yes
Permitted: Yes
Wet space: No
Addition: No
Conversion: No

14 Floor 2 - WC



Max Dimensions: 9'1" x 4'0"
Calculated Area: 36 sq. ft
Included: Yes

Heated: Yes
Finished: Yes
Enclosed: Yes
Contiguous: Yes
Permitted: Yes
Wet space: Yes
Addition: No
Conversion: No