


400 Salem Avenue Southwest, Downtown Roanoke, Roanoke, Roanoke city, Virginia, United States, 24016,




MAIN LEVEL

Property summary

 **0** Garages

 **2** Bedrooms

 **2** Bathrooms

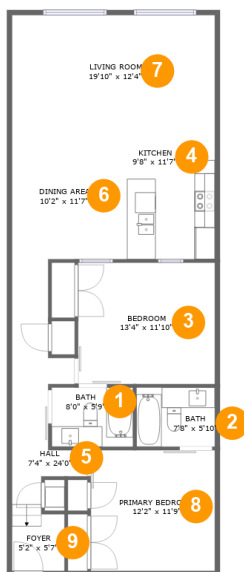
 **0** Half baths

 **1** Floors

 **1,154**
Gross living
area sqft

 **1,154**
Total sqft

400 Salem Avenue Southwest, Downtown Roanoke, Roanoke, Roanoke city, Virginia, United States, 24016,



Room dimensions

Floor 1

Total sqft: 1154 Living area: 1154

#		Dimensions	sqft	Counted as living area
1	Bath	8'0" x 5'9"	46 sq. ft	Yes
2	Bath	7'8" x 5'10"	44 sq. ft	Yes
3	Bedroom	13'4" x 11'10"	159 sq. ft	Yes
4	Kitchen	9'8" x 11'7"	112 sq. ft	Yes
5	Hall	7'4" x 24'0"	102 sq. ft	Yes
6	Dining Area	10'2" x 11'7"	118 sq. ft	Yes
7	Living Room	19'10" x 12'4"	244 sq. ft	Yes
8	Primary Bedroom	12'2" x 11'9"	143 sq. ft	Yes
9	Foyer	5'2" x 5'7"	28 sq. ft	Yes

400 Salem Avenue Southwest, Downtown Roanoke, Roanoke, Roanoke city, Virginia, United States, 24016,

1 Floor 1 - Bath



Dimensions: 8'0" x 5'9"
Area: 46 sq. ft
Counted as living area: Yes

Heated: Yes
Finished: Yes
Enclosed: Yes
Contiguous: Yes
Permitted: Yes
Wet space: Yes
Addition: No
Conversion: No

2 Floor 1 - Bath



Dimensions: 7'8" x 5'10"
Area: 44 sq. ft
Counted as living area: Yes

Heated: Yes
Finished: Yes
Enclosed: Yes
Contiguous: Yes
Permitted: Yes
Wet space: Yes
Addition: No
Conversion: No

400 Salem Avenue Southwest, Downtown Roanoke, Roanoke, Roanoke city, Virginia, United States, 24016,

3 Floor 1 - Bedroom



Dimensions: 13'4" x 11'10"
Area: 159 sq. ft
Counted as living area: Yes

Heated: Yes
Finished: Yes
Enclosed: Yes
Contiguous: Yes
Permitted: Yes
Wet space: No
Addition: No
Conversion: No

4 Floor 1 - Kitchen



Dimensions: 9'8" x 11'7"
Area: 112 sq. ft
Counted as living area: Yes

Heated: Yes
Finished: Yes
Enclosed: Yes
Contiguous: Yes
Permitted: Yes
Wet space: No
Addition: No
Conversion: No

5 Floor 1 - Hall



Dimensions: 7'4" x 24'0"
Area: 102 sq. ft
Counted as living area: Yes

Heated: Yes
Finished: Yes
Enclosed: Yes
Contiguous: Yes
Permitted: Yes
Wet space: No
Addition: No
Conversion: No

400 Salem Avenue Southwest, Downtown Roanoke, Roanoke, Roanoke city, Virginia, United States, 24016,

6 Floor 1 - Dining Area



Dimensions: 10'2" x 11'7"
Area: 118 sq. ft
Counted as living area: Yes

Heated: Yes
Finished: Yes
Enclosed: Yes
Contiguous: Yes
Permitted: Yes
Wet space: No
Addition: No
Conversion: No

7 Floor 1 - Living Room



Dimensions: 19'10" x 12'4"
Area: 244 sq. ft
Counted as living area: Yes

Heated: Yes
Finished: Yes
Enclosed: Yes
Contiguous: Yes
Permitted: Yes
Wet space: No
Addition: No
Conversion: No

8 Floor 1 - Primary Bedroom



Dimensions: 12'2" x 11'9"
Area: 143 sq. ft
Counted as living area: Yes

Heated: Yes
Finished: Yes
Enclosed: Yes
Contiguous: Yes
Permitted: Yes
Wet space: No
Addition: No
Conversion: No

**400 Salem Avenue Southwest, Downtown Roanoke,
Roanoke, Roanoke city, Virginia, United States, 24016,**

9 Floor 1 - Foyer



Dimensions: 5'2" x 5'7"
Area: 28 sq. ft
Counted as living area: Yes

Heated: Yes
Finished: Yes
Enclosed: Yes
Contiguous: Yes
Permitted: Yes
Wet space: No
Addition: No
Conversion: No