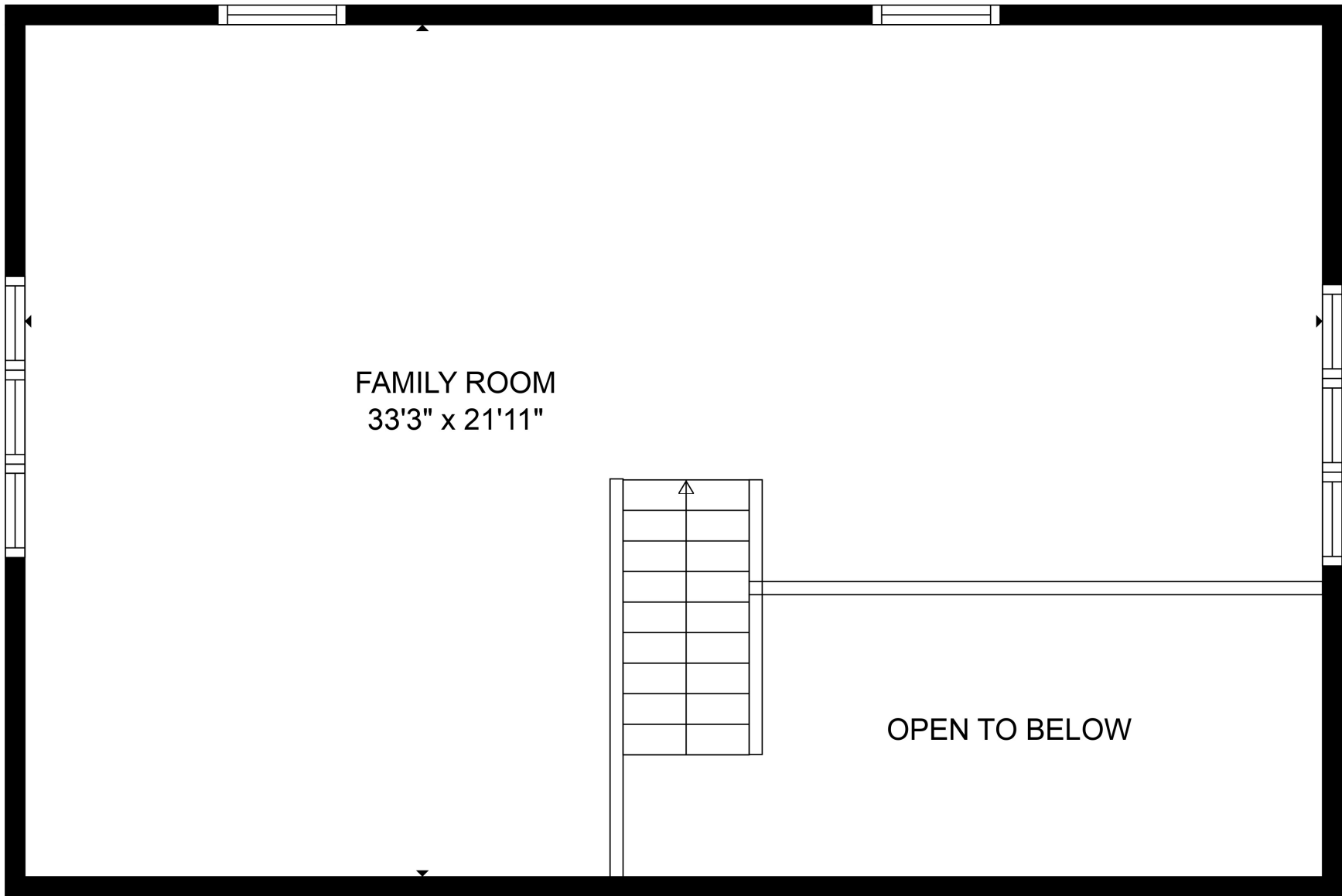


**TOTAL: 2503 sq. ft**

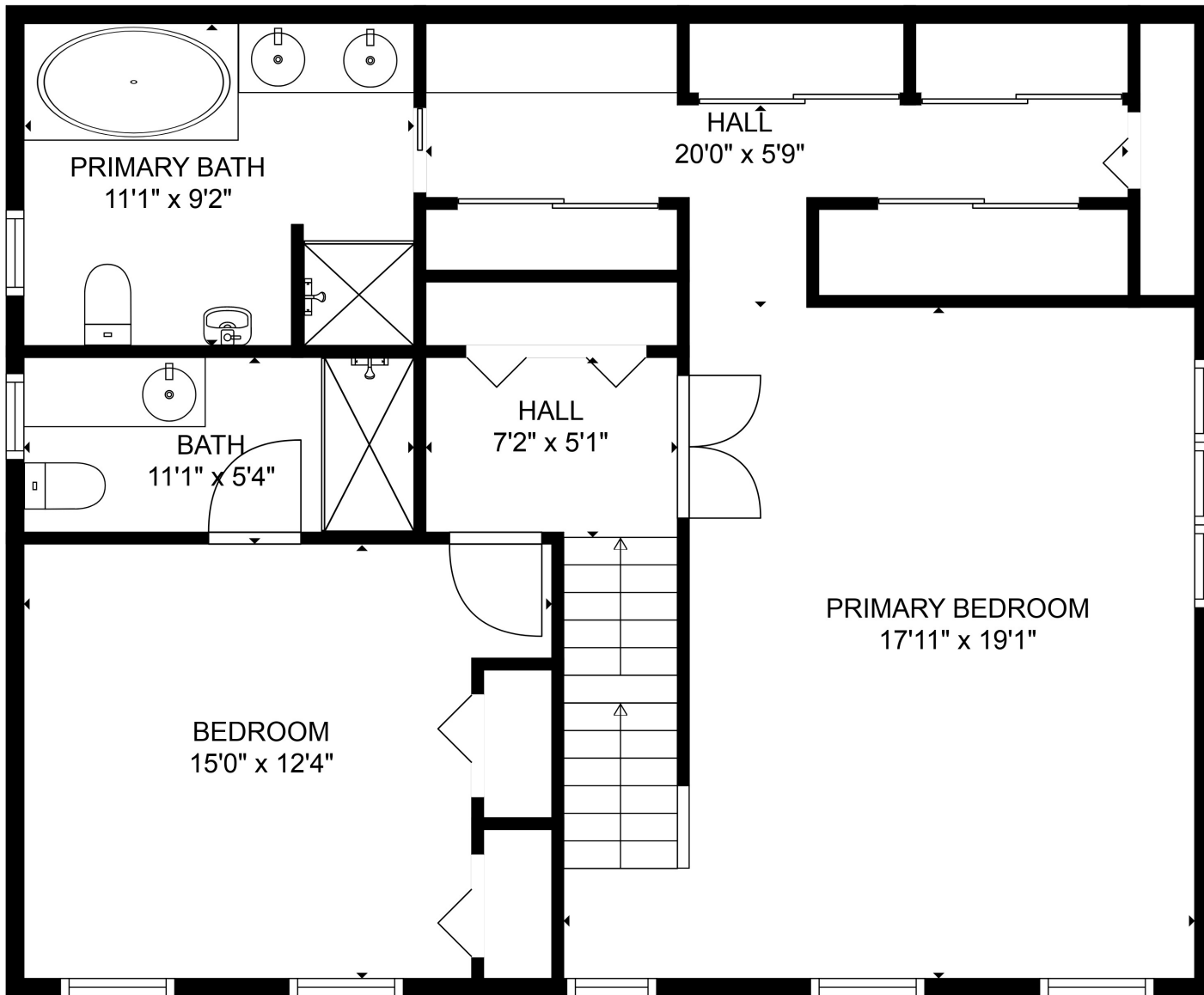
Below Ground: 0 sq. ft, FLOOR 2: 1148 sq. ft, FLOOR 3: 904 sq. ft, FLOOR 4: 451 sq. ft  
 EXCLUDED AREAS: BASEMENT: 1072 sq. ft, FIREPLACE: 8 sq. ft, OPEN TO BELOW: 115 sq. ft,  
 LOW CEILING: 162 sq. ft

SIZES AND DIMENSIONS ARE APPROXIMATE, ACTUAL MAY VARY.



**TOTAL: 2503 sq. ft**  
Below Ground: 0 sq. ft, FLOOR 2: 1148 sq. ft, FLOOR 3: 904 sq. ft, FLOOR 4: 451 sq. ft  
EXCLUDED AREAS: BASEMENT: 1072 sq. ft, FIREPLACE: 8 sq. ft, OPEN TO BELOW: 115 sq. ft,  
LOW CEILING: 162 sq. ft

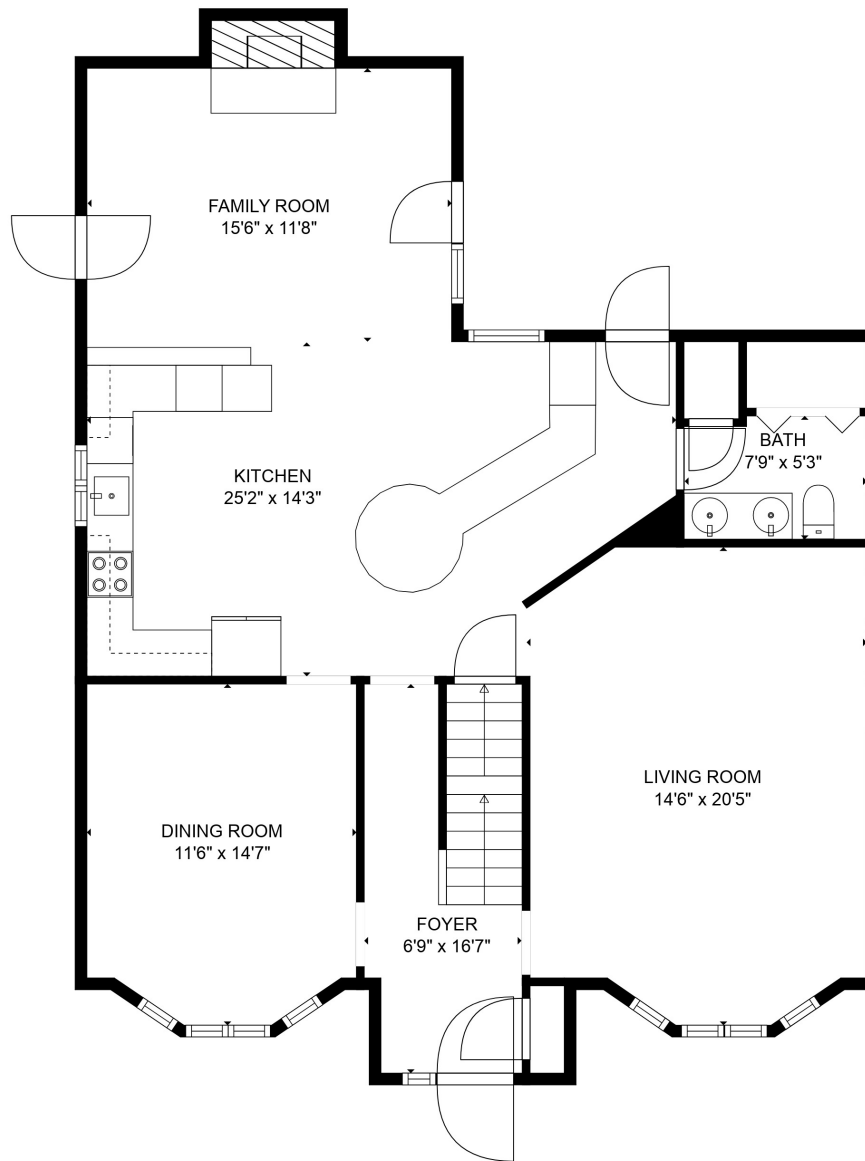
SIZES AND DIMENSIONS ARE APPROXIMATE, ACTUAL MAY VARY.



**TOTAL: 2503 sq. ft**

Below Ground: 0 sq. ft, FLOOR 2: 1148 sq. ft, FLOOR 3: 904 sq. ft, FLOOR 4: 451 sq. ft  
 EXCLUDED AREAS: BASEMENT: 1072 sq. ft, FIREPLACE: 8 sq. ft, OPEN TO BELOW: 115 sq. ft,  
 LOW CEILING: 162 sq. ft

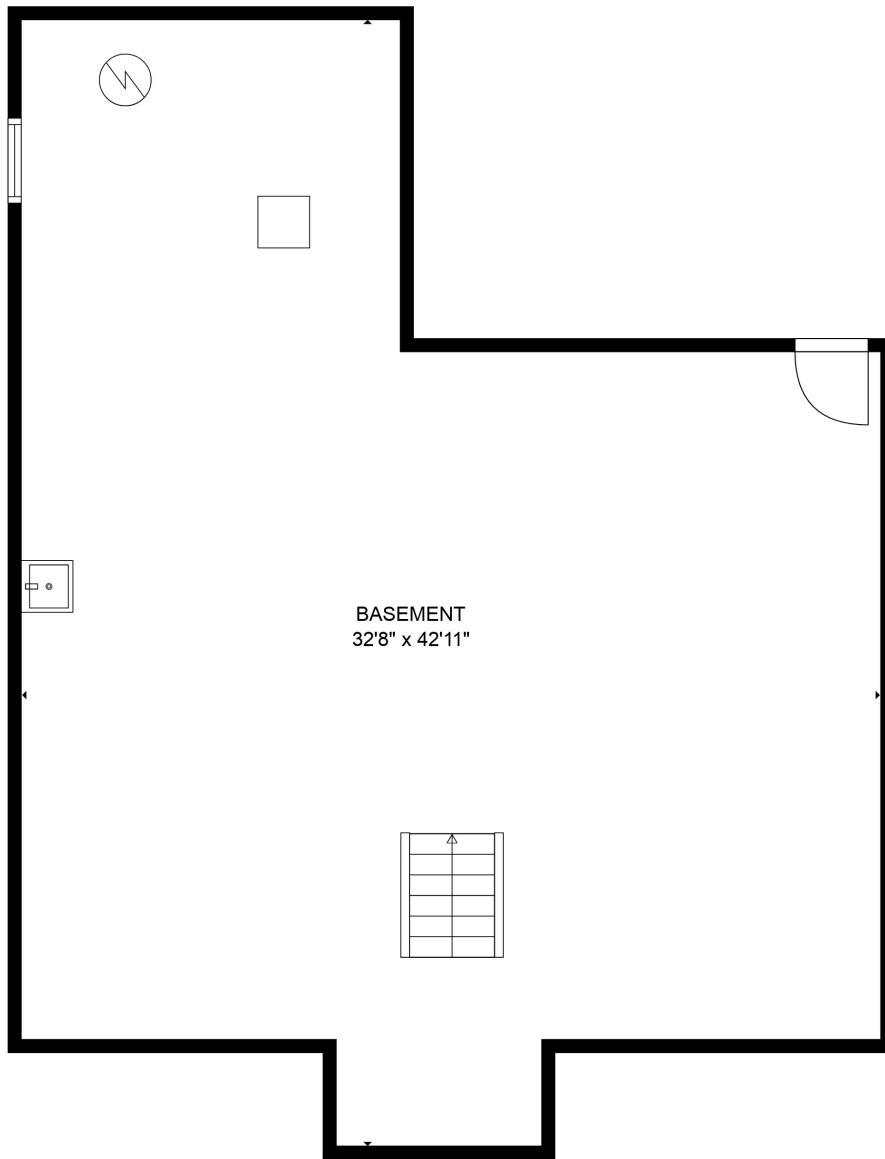
SIZES AND DIMENSIONS ARE APPROXIMATE, ACTUAL MAY VARY.



**TOTAL: 2503 sq. ft**

Below Ground: 0 sq. ft, FLOOR 2: 1148 sq. ft, FLOOR 3: 904 sq. ft, FLOOR 4: 451 sq. ft  
EXCLUDED AREAS: BASEMENT: 1072 sq. ft, FIREPLACE: 8 sq. ft, OPEN TO BELOW: 115 sq. ft,  
LOW CEILING: 162 sq. ft

SIZES AND DIMENSIONS ARE APPROXIMATE, ACTUAL MAY VARY.



BASEMENT  
32'8" x 42'11"

**TOTAL: 2503 sq. ft**

Below Ground: 0 sq. ft, FLOOR 2: 1148 sq. ft, FLOOR 3: 904 sq. ft, FLOOR 4: 451 sq. ft  
EXCLUDED AREAS: BASEMENT: 1072 sq. ft, FIREPLACE: 8 sq. ft, OPEN TO BELOW: 115 sq. ft,  
LOW CEILING: 162 sq. ft

SIZES AND DIMENSIONS ARE APPROXIMATE, ACTUAL MAY VARY.