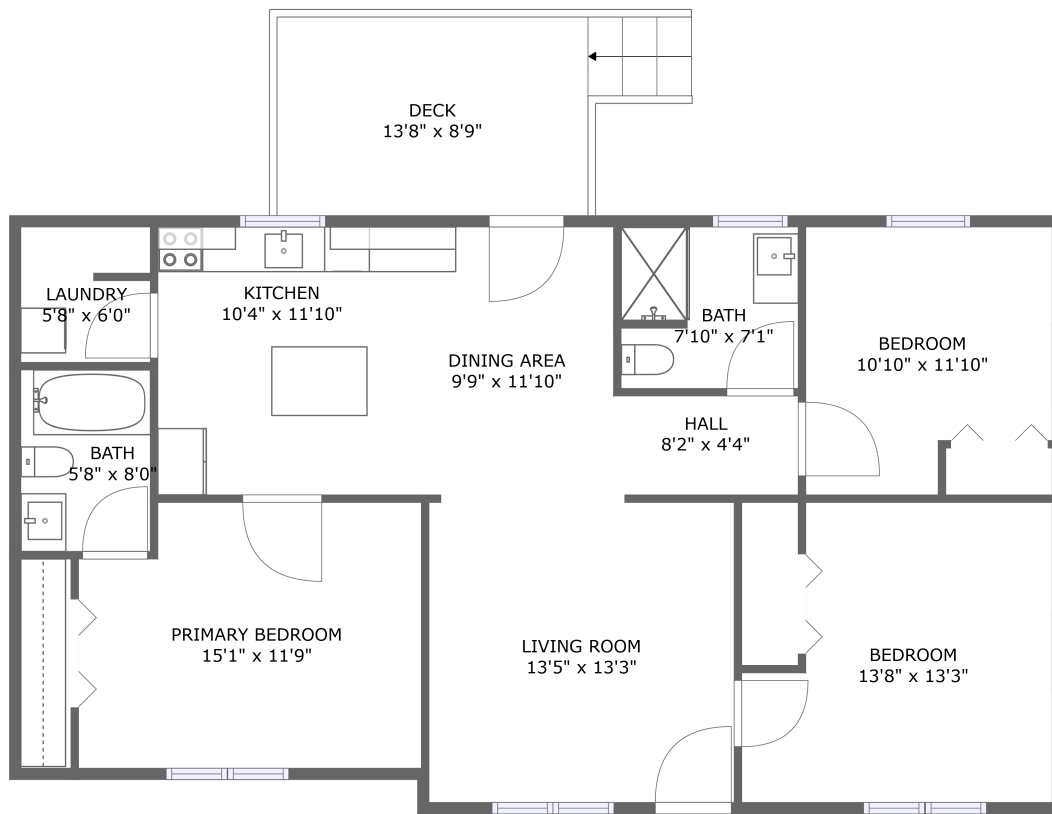



25616 Front Road, West Petersburg, North Dinwiddie, Dinwiddie County, Virginia, United States, 23803



FLOOR 1

Property summary

 **0** Garages

 **3** Bedrooms

 **2** Bathrooms

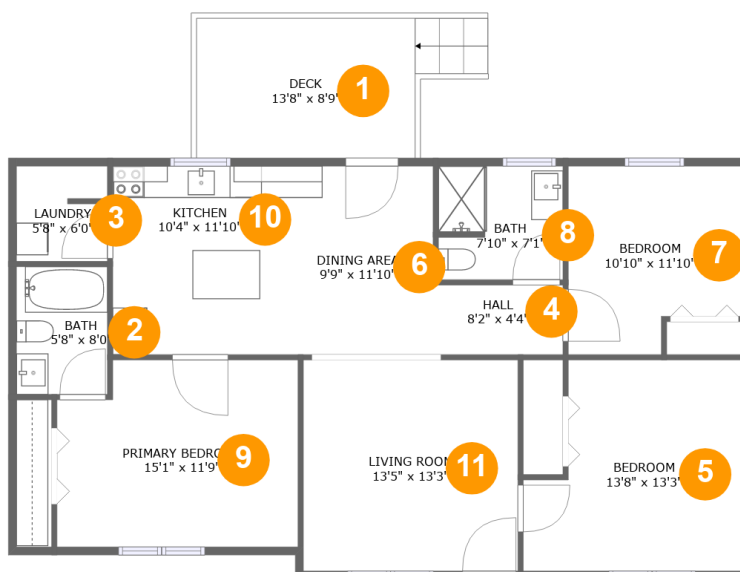
 **0** Half baths

 **1** Floors

 **1,197** Gross living area sqft

 **1,317** Total sqft

25616 Front Road, West Petersburg, North Dinwiddie, Dinwiddie County, Virginia, United States, 23803



Room dimensions

Floor 1

Total sqft: 1317 Living area: 1197

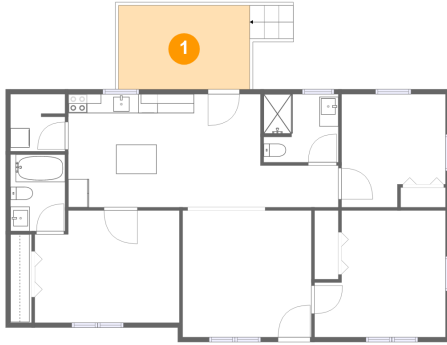
#		Dimensions	sqft	Counted as living area
1	Deck	13'8" x 8'9"	120 sq. ft	No
2	Bath	5'8" x 8'0"	46 sq. ft	Yes
3	Laundry	5'8" x 6'0"	33 sq. ft	Yes
4	Hall	8'2" x 4'4"	35 sq. ft	Yes
5	Bedroom	13'8" x 13'3"	160 sq. ft	Yes
6	Dining Area	9'9" x 11'10"	115 sq. ft	Yes
7	Bedroom	10'10" x 11'10"	116 sq. ft	Yes
8	Bath	7'10" x 7'1"	55 sq. ft	Yes
9	Primary Bedroom	15'1" x 11'9"	168 sq. ft	Yes
10	Kitchen	10'4" x 11'10"	122 sq. ft	Yes
11	Living Room	13'5" x 13'3"	178 sq. ft	Yes

Scan captured on Mon, 27 Jan 2025 16:09:25 GMT

Information is calculated by Cubicasa technology deemed highly reliable but not guaranteed.

25616 Front Road, West Petersburg, North Dinwiddie, Dinwiddie County, Virginia, United States, 23803

1 Floor 1 - Deck



Dimensions: 13'8" x 8'9"
Area: 120 sq. ft
Counted as living area: No

Heated: No
Finished: Yes
Enclosed: No
Contiguous: Yes
Permitted: Yes
Wet space: No
Addition: No
Conversion: No

2 Floor 1 - Bath

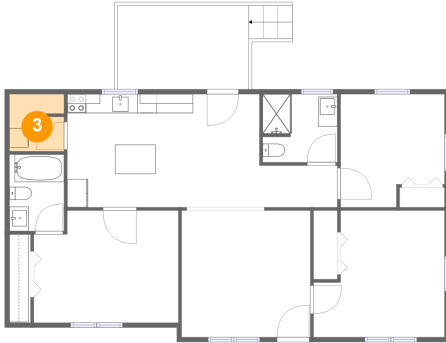


Dimensions: 5'8" x 8'0"
Area: 46 sq. ft
Counted as living area: Yes

Heated: Yes
Finished: Yes
Enclosed: Yes
Contiguous: Yes
Permitted: Yes
Wet space: Yes
Addition: No
Conversion: No

25616 Front Road, West Petersburg, North Dinwiddie,
Dinwiddie County, Virginia, United States, 23803

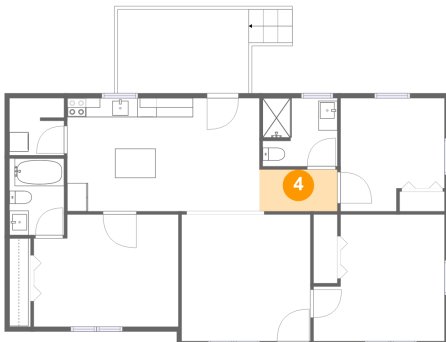
3 Floor 1 - Laundry



Dimensions: 5'8" x 6'0"
Area: 33 sq. ft
Counted as living area: Yes

Heated: Yes
Finished: Yes
Enclosed: Yes
Contiguous: Yes
Permitted: Yes
Wet space: No
Addition: No
Conversion: No

4 Floor 1 - Hall



Dimensions: 8'2" x 4'4"
Area: 35 sq. ft
Counted as living area: Yes

Heated: Yes
Finished: Yes
Enclosed: Yes
Contiguous: Yes
Permitted: Yes
Wet space: No
Addition: No
Conversion: No

5 Floor 1 - Bedroom

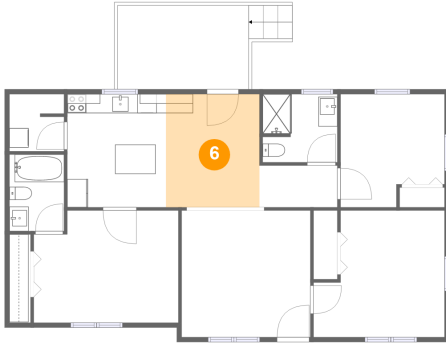


Dimensions: 13'8" x 13'3"
Area: 160 sq. ft
Counted as living area: Yes

Heated: Yes
Finished: Yes
Enclosed: Yes
Contiguous: Yes
Permitted: Yes
Wet space: No
Addition: No
Conversion: No

25616 Front Road, West Petersburg, North Dinwiddie,
Dinwiddie County, Virginia, United States, 23803

6 Floor 1 - Dining Area



Dimensions: 9'9" x 11'10"
Area: 115 sq. ft
Counted as living area: Yes

Heated: Yes
Finished: Yes
Enclosed: Yes
Contiguous: Yes
Permitted: Yes
Wet space: No
Addition: No
Conversion: No

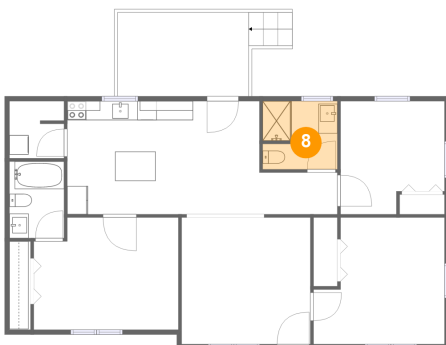
7 Floor 1 - Bedroom



Dimensions: 10'10" x 11'10"
Area: 116 sq. ft
Counted as living area: Yes

Heated: Yes
Finished: Yes
Enclosed: Yes
Contiguous: Yes
Permitted: Yes
Wet space: No
Addition: No
Conversion: No

8 Floor 1 - Bath

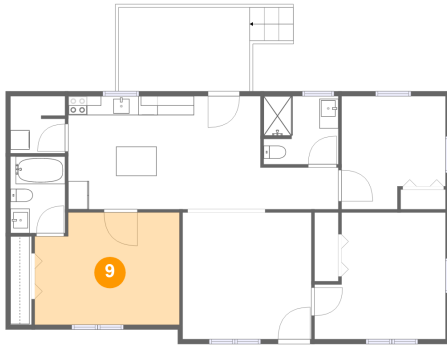


Dimensions: 7'10" x 7'1"
Area: 55 sq. ft
Counted as living area: Yes

Heated: Yes
Finished: Yes
Enclosed: Yes
Contiguous: Yes
Permitted: Yes
Wet space: Yes
Addition: No
Conversion: No

25616 Front Road, West Petersburg, North Dinwiddie, Dinwiddie County, Virginia, United States, 23803

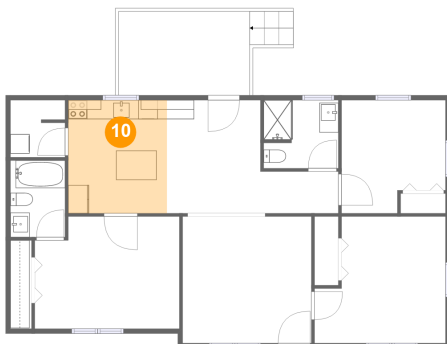
9 Floor 1 - Primary Bedroom



Dimensions: 15'1" x 11'9"
Area: 168 sq. ft
Counted as living area: Yes

Heated: Yes
Finished: Yes
Enclosed: Yes
Contiguous: Yes
Permitted: Yes
Wet space: No
Addition: No
Conversion: No

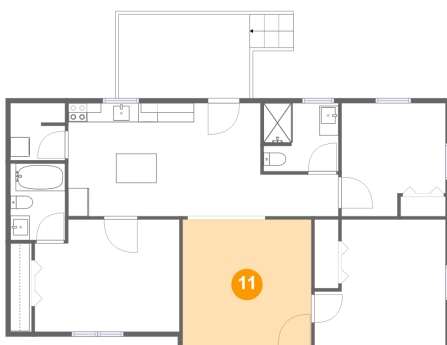
10 Floor 1 - Kitchen



Dimensions: 10'4" x 11'10"
Area: 122 sq. ft
Counted as living area: Yes

Heated: Yes
Finished: Yes
Enclosed: Yes
Contiguous: Yes
Permitted: Yes
Wet space: No
Addition: No
Conversion: No

11 Floor 1 - Living Room



Dimensions: 13'5" x 13'3"
Area: 178 sq. ft
Counted as living area: Yes

Heated: Yes
Finished: Yes
Enclosed: Yes
Contiguous: Yes
Permitted: Yes
Wet space: No
Addition: No
Conversion: No