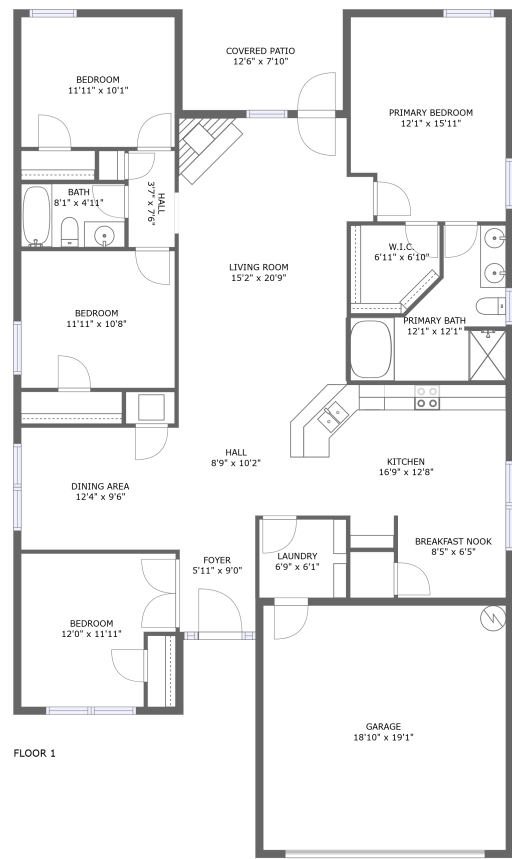


Home report

118 Herrick Drive Southwest, Lake Forest, Huntsville, Madison County, Alabama, United States, 35824





Total GLA: 1824 sq. ft


Floor 1: 1824 sq. ft

Excluded: Garage 394 sq. ft, Covered patio 98 sq. ft, Undefined 15 sq. ft

Property summary

 1 Floors

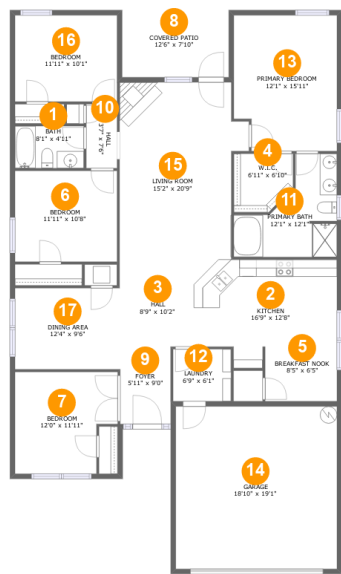
 4 Bedrooms

 2 Bathrooms

 1 Garages

Home report

118 Herrick Drive Southwest, Lake Forest, Huntsville, Madison County, Alabama, United States, 35824



Room dimensions

Floor 1

Total:1824sqft

Excluded: 507sqft

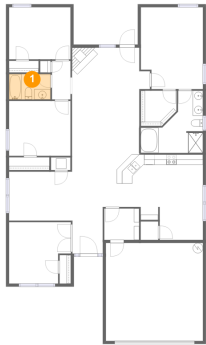
#		Max Dimensions	sqft	Included
1	Bath	8'1" x 4'11"	40 sq. ft	Yes
2	Kitchen	16'9" x 12'8"	180 sq. ft	Yes
3	Hall	8'9" x 10'2"	89 sq. ft	Yes
4	W.I.C.	6'11" x 6'10"	44 sq. ft	Yes
5	Breakfast Nook	8'5" x 6'5"	54 sq. ft	Yes
6	Bedroom	11'11" x 10'8"	128 sq. ft	Yes
7	Bedroom	12'0" x 11'11"	129 sq. ft	Yes
8	Covered Patio	12'6" x 7'10"	98 sq. ft	No
9	Foyer	5'11" x 9'0"	54 sq. ft	Yes
10	Hall	3'7" x 7'6"	27 sq. ft	Yes
11	Primary Bath	12'1" x 12'1"	98 sq. ft	Yes

Home report

118 Herrick Drive Southwest, Lake Forest, Huntsville, Madison
County, Alabama, United States, 35824

#		Max Dimensions	sqft	Included
12	Laundry	6'9" x 6'1"	41 sq. ft	Yes
13	Primary Bedroom	12'1" x 15'11"	185 sq. ft	Yes
14	Garage	18'10" x 19'1"	360 sq. ft	No
15	Living Room	15'2" x 20'9"	280 sq. ft	Yes
16	Bedroom	11'11" x 10'1"	121 sq. ft	Yes
17	Dining Area	12'4" x 9'6"	117 sq. ft	Yes

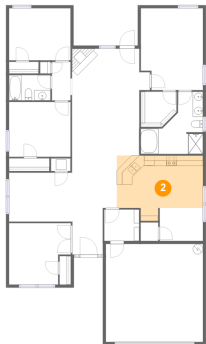
1 Floor 1 - Bath



Max Dimensions: 8'1" x 4'11"
Calculated Area: 40 sq. ft
Included: Yes

Heated: Yes
Finished: Yes
Enclosed: Yes
Contiguous: Yes
Permitted: Yes
Wet space: Yes
Addition: No
Conversion: No

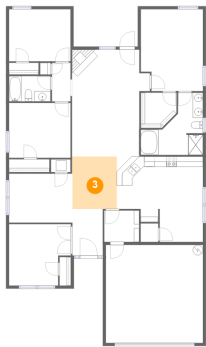
2 Floor 1 - Kitchen



Max Dimensions: 16'9" x 12'8"
Calculated Area: 180 sq. ft
Included: Yes

Heated: Yes
Finished: Yes
Enclosed: Yes
Contiguous: Yes
Permitted: Yes
Wet space: No
Addition: No
Conversion: No

3 Floor 1 - Hall



Max Dimensions: 8'9" x 10'2"
Calculated Area: 89 sq. ft
Included: Yes

Heated: Yes
Finished: Yes
Enclosed: Yes
Contiguous: Yes
Permitted: Yes
Wet space: No
Addition: No
Conversion: No

4 Floor 1 - W.I.C.



Max Dimensions: 6'11" x 6'10"
Calculated Area: 44 sq. ft
Included: Yes

Heated: Yes
Finished: Yes
Enclosed: Yes
Contiguous: Yes
Permitted: Yes
Wet space: No
Addition: No
Conversion: No

5 Floor 1 - Breakfast Nook



Max Dimensions: 8'5" x 6'5"
Calculated Area: 54 sq. ft
Included: Yes

Heated: Yes
Finished: Yes
Enclosed: Yes
Contiguous: Yes
Permitted: Yes
Wet space: No
Addition: No
Conversion: No

6 Floor 1 - Bedroom



Max Dimensions: 11'11" x 10'8"
Calculated Area: 128 sq. ft
Included: Yes

Heated: Yes
Finished: Yes
Enclosed: Yes
Contiguous: Yes
Permitted: Yes
Wet space: No
Addition: No
Conversion: No

7 Floor 1 - Bedroom



Max Dimensions: 12'0" x 11'11"
Calculated Area: 129 sq. ft
Included: Yes

Heated: Yes
Finished: Yes
Enclosed: Yes
Contiguous: Yes
Permitted: Yes
Wet space: No
Addition: No
Conversion: No

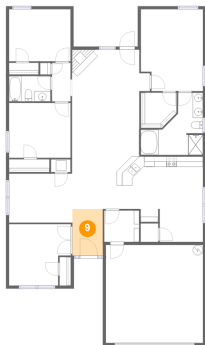
8 Floor 1 - Covered Patio



Max Dimensions: 12'6" x 7'10"
Calculated Area: 98 sq. ft
Included: No

Heated: No
Finished: Yes
Enclosed: No
Contiguous: Yes
Permitted: Yes
Wet space: No
Addition: No
Conversion: No

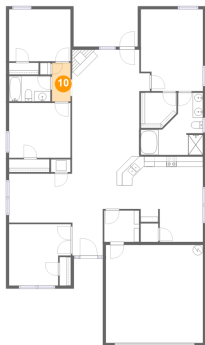
9 Floor 1 - Foyer



Max Dimensions: 5'11" x 9'0"
Calculated Area: 54 sq. ft
Included: Yes

Heated: Yes
Finished: Yes
Enclosed: Yes
Contiguous: Yes
Permitted: Yes
Wet space: No
Addition: No
Conversion: No

10 Floor 1 - Hall



Max Dimensions: 3'7" x 7'6"
Calculated Area: 27 sq. ft
Included: Yes

Heated: Yes
Finished: Yes
Enclosed: Yes
Contiguous: Yes
Permitted: Yes
Wet space: No
Addition: No
Conversion: No

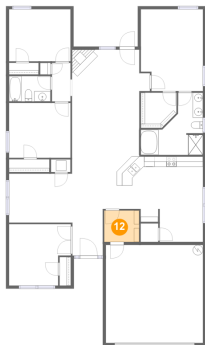
11 Floor 1 - Primary Bath



Max Dimensions: 12'1" x 12'1"
Calculated Area: 98 sq. ft
Included: Yes

Heated: Yes
Finished: Yes
Enclosed: Yes
Contiguous: Yes
Permitted: Yes
Wet space: Yes
Addition: No
Conversion: No

12 Floor 1 - Laundry



Max Dimensions: 6'9" x 6'1"
Calculated Area: 41 sq. ft
Included: Yes

Heated: Yes
Finished: Yes
Enclosed: Yes
Contiguous: Yes
Permitted: Yes
Wet space: No
Addition: No
Conversion: No

13 Floor 1 - Primary Bedroom



Max Dimensions: 12'1" x 15'11"
Calculated Area: 185 sq. ft
Included: Yes

Heated: Yes
Finished: Yes
Enclosed: Yes
Contiguous: Yes
Permitted: Yes
Wet space: No
Addition: No
Conversion: No

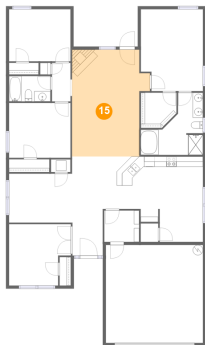
14 Floor 1 - Garage



Max Dimensions: 18'10" x 19'1"
Calculated Area: 360 sq. ft
Included: No

Heated: No
Finished: No
Enclosed: Yes
Contiguous: Yes
Permitted: Yes
Wet space: No
Addition: No
Conversion: No

15 Floor 1 - Living Room



Max Dimensions: 15'2" x 20'9"
Calculated Area: 280 sq. ft
Included: Yes

Heated: Yes
Finished: Yes
Enclosed: Yes
Contiguous: Yes
Permitted: Yes
Wet space: No
Addition: No
Conversion: No

16 Floor 1 - Bedroom



Max Dimensions: 11'11" x 10'1"
Calculated Area: 121 sq. ft
Included: Yes

Heated: Yes
Finished: Yes
Enclosed: Yes
Contiguous: Yes
Permitted: Yes
Wet space: No
Addition: No
Conversion: No

17 Floor 1 - Dining Area



Max Dimensions: 12'4" x 9'6"
Calculated Area: 117 sq. ft
Included: Yes

Heated: Yes
Finished: Yes
Enclosed: Yes
Contiguous: Yes
Permitted: Yes
Wet space: No
Addition: No
Conversion: No