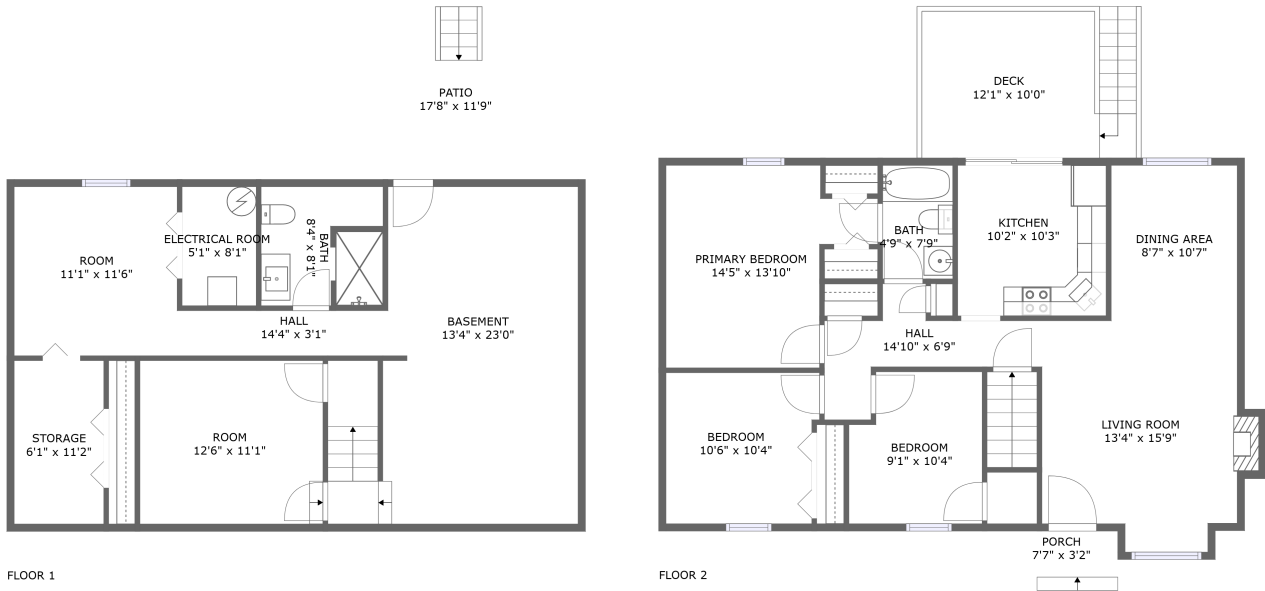


# 3524 View Avenue, Richart Heights, Cave Spring, Roanoke, Roanoke County, Virginia, United



## Property Summary

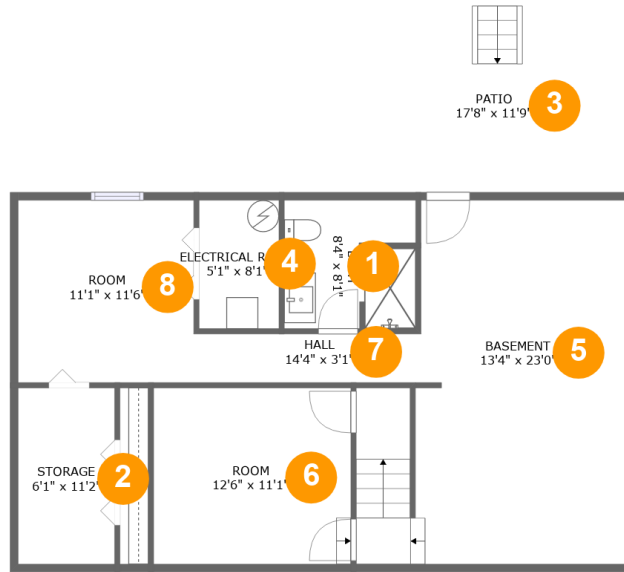
**0** garages    **3** bedrooms    **2** bathrooms    **0** half baths

**2** floors

**1,830** Gross Living Area sqft

**2,334** total sqft

# 3524 View Avenue, Richart Heights, Cave Spring, Roanoke, Roanoke County, Virginia, United



## Room Dimensions

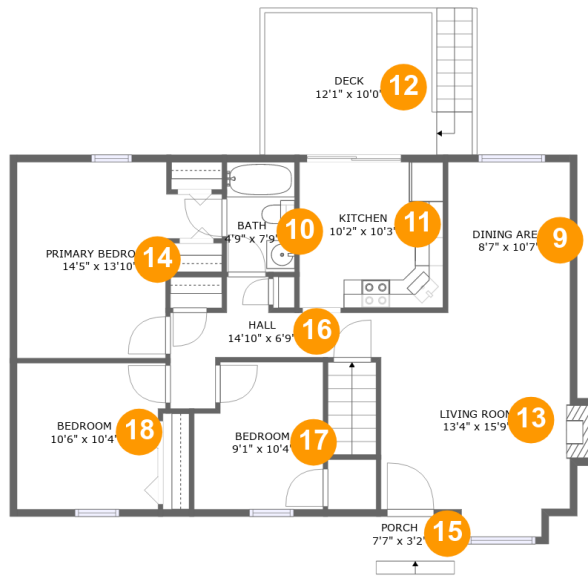
Floor 1

Total sqft: 1155

Living area: 801

#	Room name	Dimensions	Area (sqft)	Counted as Living Area
1	Bath	8'4" x 8'1"	65 sq. ft	Yes
2	Storage	6'1" x 11'2"	68 sq. ft	No
3	Patio	17'8" x 11'9"	208 sq. ft	No
4	Electrical Room	5'1" x 8'1"	41 sq. ft	No
5	Basement	13'4" x 23'0"	341 sq. ft	Yes
6	Room	12'6" x 11'1"	139 sq. ft	Yes
7	Hall	14'4" x 3'1"	44 sq. ft	Yes
8	Room	11'1" x 11'6"	128 sq. ft	Yes

# 3524 View Avenue, Richart Heights, Cave Spring, Roanoke, Roanoke County, Virginia, United



## Room Dimensions

Floor 2

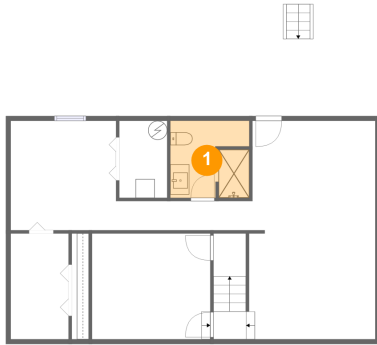
Total sqft: 1179

Living area: 1029

#	Room name	Dimensions	Area (sqft)	Counted as Living Area
9	Dining Area	8'7" x 10'7"	91 sq. ft	Yes
10	Bath	4'9" x 7'9"	37 sq. ft	Yes
11	Kitchen	10'2" x 10'3"	104 sq. ft	Yes
12	Deck	12'1" x 10'0"	119 sq. ft	No
13	Living Room	13'4" x 15'9"	201 sq. ft	Yes
14	Primary Bedroom	14'5" x 13'10"	157 sq. ft	Yes
15	Porch	7'7" x 3'2"	24 sq. ft	No
16	Hall	14'10" x 6'9"	66 sq. ft	Yes
17	Bedroom	9'1" x 10'4"	87 sq. ft	Yes
18	Bedroom	10'6" x 10'4"	104 sq. ft	Yes

# 3524 View Avenue, Richart Heights, Cave Spring, Roanoke, Roanoke County, Virginia, United

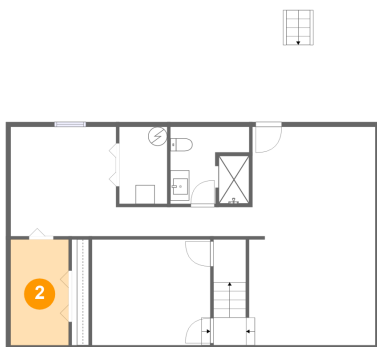
## 1 Floor 1 - Bath



Dimensions: 8'4" x 8'1"  
Area: 65 sq. ft  
Counted as Living Area:  
Yes

Heated: Yes  
Finished: Yes  
Enclosed: Yes  
Contiguous:  
Yes  
Permitted: Yes  
Wet Space: Yes  
Addition: No  
Conversion: No

## 2 Floor 1 - Storage

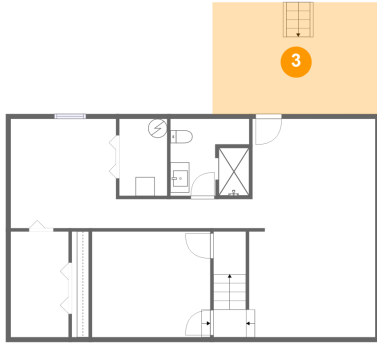


Dimensions: 6'1" x 11'2"  
Area: 68 sq. ft  
Counted as Living Area: No

Heated: No  
Finished: No  
Enclosed: No  
Contiguous: Yes  
Permitted: Yes  
Wet Space: No  
Addition: No  
Conversion: No

# 3524 View Avenue, Richart Heights, Cave Spring, Roanoke, Roanoke County, Virginia, United

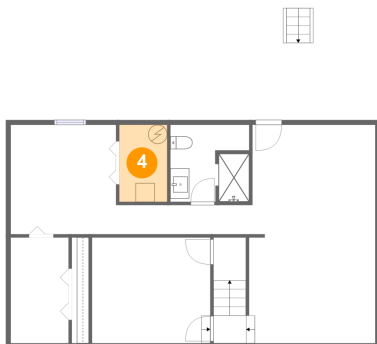
## 3 Floor 1 - Patio



Dimensions: 17'8" x 11'9"  
Area: 208 sq. ft  
Counted as Living Area: No

Heated: No  
Finished: Yes  
Enclosed: No  
Contiguous: Yes  
Permitted: Yes  
Wet Space: No  
Addition: No  
Conversion: No

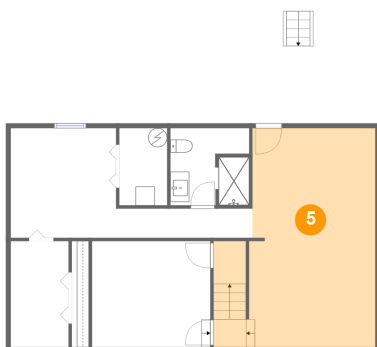
## 4 Floor 1 - Electrical Room



Dimensions: 5'1" x 8'1"  
Area: 41 sq. ft  
Counted as Living Area: No

Heated: No  
Finished: No  
Enclosed: Yes  
Contiguous: Yes  
Permitted: Yes  
Wet Space: No  
Addition: No  
Conversion: No

## 5 Floor 1 - Basement

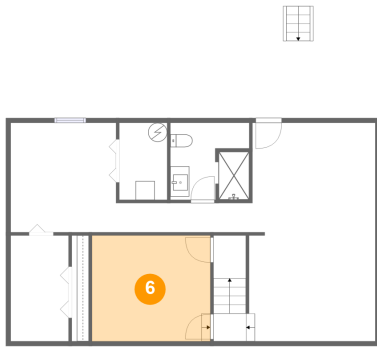


Dimensions: 13'4" x 23'0"  
Area: 341 sq. ft  
Counted as Living Area: Yes

Heated: Yes  
Finished: Yes  
Enclosed: Yes  
Contiguous: Yes  
Permitted: Yes  
Wet Space: No  
Addition: No  
Conversion: No

# 3524 View Avenue, Richart Heights, Cave Spring, Roanoke, Roanoke County, Virginia, United

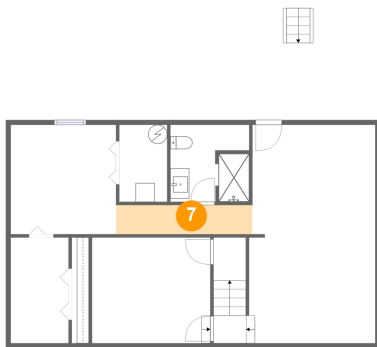
## 6 Floor 1 - Room



Dimensions: 12'6" x 11'1"  
Area: 139 sq. ft  
Counted as Living Area:  
Yes

Heated: Yes  
Finished: Yes  
Enclosed: Yes  
Contiguous:  
Yes  
Permitted: Yes  
Wet Space: No  
Addition: No  
Conversion: No

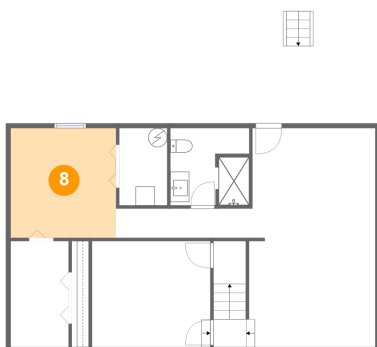
## 7 Floor 1 - Hall



Dimensions: 14'4" x 3'1"  
Area: 44 sq. ft  
Counted as Living Area:  
Yes

Heated: Yes  
Finished: Yes  
Enclosed: Yes  
Contiguous:  
Yes  
Permitted: Yes  
Wet Space: No  
Addition: No  
Conversion: No

## 8 Floor 1 - Room

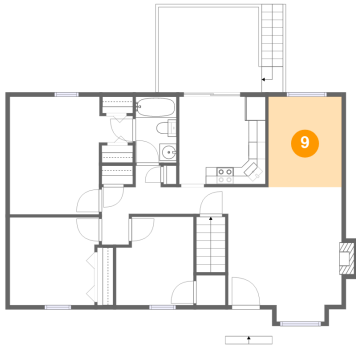


Dimensions: 11'1" x 11'6"  
Area: 128 sq. ft  
Counted as Living Area:  
Yes

Heated: Yes  
Finished: Yes  
Enclosed: Yes  
Contiguous:  
Yes  
Permitted: Yes  
Wet Space: No  
Addition: No  
Conversion: No

# 3524 View Avenue, Richart Heights, Cave Spring, Roanoke, Roanoke County, Virginia, United

## 9 Floor 2 - Dining Area



Dimensions: 8'7" x 10'7"  
Area: 91 sq. ft  
Counted as Living Area:  
Yes

Heated: Yes  
Finished: Yes  
Enclosed: Yes  
Contiguous:  
Yes  
Permitted: Yes  
Wet Space: No  
Addition: No  
Conversion: No

## 10 Floor 2 - Bath



Dimensions: 4'9" x 7'9"  
Area: 37 sq. ft  
Counted as Living Area:  
Yes

Heated: Yes  
Finished: Yes  
Enclosed: Yes  
Contiguous:  
Yes  
Permitted: Yes  
Wet Space: Yes  
Addition: No  
Conversion: No

## 11 Floor 2 - Kitchen



Dimensions: 10'2" x 10'3"  
Area: 104 sq. ft  
Counted as Living Area:  
Yes

Heated: Yes  
Finished: Yes  
Enclosed: Yes  
Contiguous:  
Yes  
Permitted: Yes  
Wet Space: No  
Addition: No  
Conversion: No

# 3524 View Avenue, Richart Heights, Cave Spring, Roanoke, Roanoke County, Virginia, United

## 12 Floor 2 - Deck



Dimensions: 12'1" x 10'0"  
Area: 119 sq. ft  
Counted as Living Area: No

Heated: No  
Finished: Yes  
Enclosed: No  
Contiguous: Yes  
Permitted: Yes  
Wet Space: No  
Addition: No  
Conversion: No

## 13 Floor 2 - Living Room



Dimensions: 13'4" x 15'9"  
Area: 201 sq. ft  
Counted as Living Area:  
Yes

Heated: Yes  
Finished: Yes  
Enclosed: Yes  
Contiguous:  
Yes  
Permitted: Yes  
Wet Space: No  
Addition: No  
Conversion: No

## 14 Floor 2 - Primary Bedroom



Dimensions: 14'5" x 13'10"  
Area: 157 sq. ft  
Counted as Living Area:  
Yes

Heated: Yes  
Finished: Yes  
Enclosed: Yes  
Contiguous:  
Yes  
Permitted: Yes  
Wet Space: No  
Addition: No  
Conversion: No



# 3524 View Avenue, Richart Heights, Cave Spring, Roanoke, Roanoke County, Virginia, United

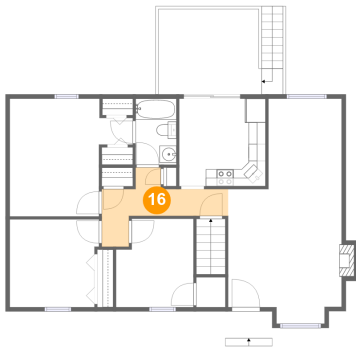
## 15 Floor 2 - Porch



Dimensions: 7'7" x 3'2"  
Area: 24 sq. ft  
Counted as Living Area: No

Heated: No  
Finished: Yes  
Enclosed: No  
Contiguous: Yes  
Permitted: Yes  
Wet Space: No  
Addition: No  
Conversion: No

## 16 Floor 2 - Hall



Dimensions: 14'10" x 6'9"  
Area: 66 sq. ft  
Counted as Living Area:  
Yes

Heated: Yes  
Finished: Yes  
Enclosed: Yes  
Contiguous:  
Yes  
Permitted: Yes  
Wet Space: No  
Addition: No  
Conversion: No

## 17 Floor 2 - Bedroom



Dimensions: 9'1" x 10'4"  
Area: 87 sq. ft  
Counted as Living Area:  
Yes

Heated: Yes  
Finished: Yes  
Enclosed: Yes  
Contiguous:  
Yes  
Permitted: Yes  
Wet Space: No  
Addition: No  
Conversion: No

# 3524 View Avenue, Richart Heights, Cave Spring, Roanoke, Roanoke County, Virginia, United

## 18 Floor 2 - Bedroom



Dimensions: 10'6" x 10'4"  
Area: 104 sq. ft  
Counted as Living Area:  
Yes

Heated: Yes  
Finished: Yes  
Enclosed: Yes  
Contiguous:  
Yes  
Permitted: Yes  
Wet Space: No  
Addition: No  
Conversion: No