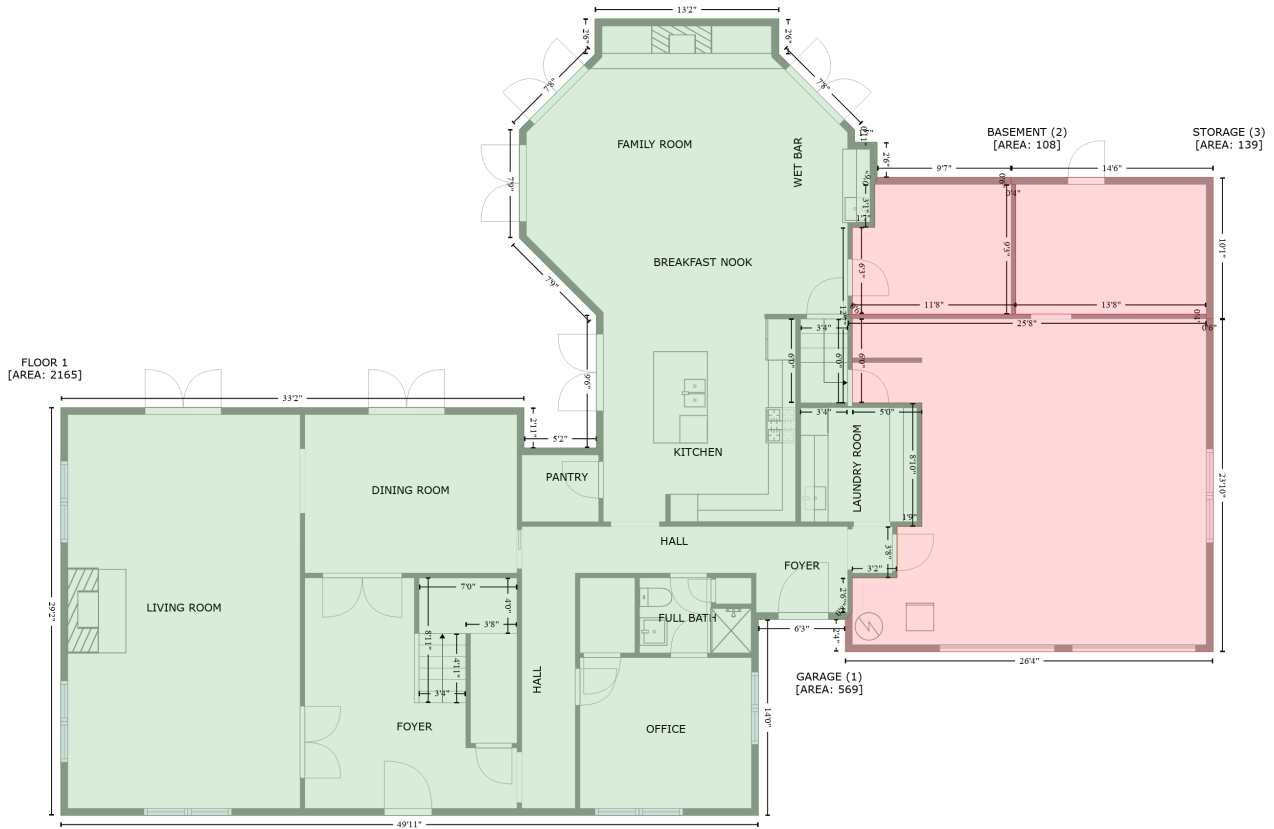


3 Ambleside Drive, Belleair, Pinellas County, Florida, United States, 33756

Gross Living Area: 4232 sq. ft



Space	Area (sq. ft)	Calculation
FLOOR 1 (Living area)	2165	Coordinate Polygon Area Algorithm using inches $-((614.6 + 614.6) * (-13.8 - 16.3) + (614.6 + 679.6) * (16.3 - 81.3) + (679.6 + 679.6) * (81.3 - 92.1) + (679.6 + 698.9) * (92.1 - 92.1) + (698.9 + 698.9) * (92.1 - 122.3) + (698.9 + 696.9) * (122.3 - 128.3) + (696.9 + 696.9) * (128.3 - 165.2) + (696.9 + 677.6) * (165.2 - 165.2) + (677.6 + 677.6) * (165.2 - 239.8) + (677.6 + 673.6) * (239.8 - 239.8) + (673.6 + 677.6) * (239.8 - 243.8) + (677.6 + 677.6) * (243.8 - 316) + (677.6 + 737.3) * (316 - 316) + (737.3 + 737.3) * (316 - 422) + (737.3 + 716) * (422 - 422) + (716 + 716) * (422 - 466.1) + (716 + 677.6) * (466.1 - 466.1) + (677.6 + 677.6) * (466.1 - 496) + (677.6 + 671.6) * (496 - 502) + (671.6 + 596.9) * (502 - 502) + (596.9 + 596.9) * (502 - 670.2) + (596.9 + -2.1) * (670.2 - 670.2) + (-2.1 + -2.1) * (670.2 - 320) + (-2.1 + 395.7) * (320 - 320) + (395.7 + 395.7) * (320 - 354.6) + (395.7 + 457.8) * (354.6 - 354.6) + (457.8 + 457.8) * (354.6 - 240.7) + (457.8 + 391.7) * (240.7 - 174.6) + (391.7 + 391.7) * (174.6 - 81.3) + (391.7 + 456.5) * (81.3 - 16.5) + (456.5 + 456.5) * (16.5 - -13.8) + (456.5 + 614.6) * (-13.8 - -13.8)) * 0.5 * 0.00694$
GARAGE (Non-living area)	569	$-((981.4 + 981.4) * (239.8 - 243.8) + (981.4 + 987.4) * (243.8 - 243.8) + (987.4 + 987.4) * (243.8 - 529.6) + (987.4 + 671.6) * (529.6 - 529.6) + (671.6 + 671.6) * (529.6 - 502) + (671.6 + 677.6) * (502 - 496) + (677.6 + 677.6) * (496 - 466.1) + (677.6 + 716) * (466.1 - 466.1) + (716 + 716) * (466.1 - 422) + (716 + 737.3) * (422 - 422) + (737.3 + 737.3) * (422 - 316) + (737.3 + 677.6) * (316 - 316) + (677.6 + 677.6) * (316 - 243.8) + (677.6 + 673.6) * (243.8 - 239.8) + (673.6 + 981.4) * (239.8 - 239.8)) * 0.5 * 0.00694$
BASEMENT (Non-living area)	108	$-((813.9 + 813.9) * (122.3 - 128.3) + (813.9 + 817.9) * (128.3 - 128.3) + (817.9 + 817.9) * (128.3 - 239.8) + (817.9 + 677.6) * (239.8 - 239.8) + (677.6 + 677.6) * (239.8 - 165.2) + (677.6 + 696.9) * (165.2 - 165.2) + (696.9 + 696.9) * (165.2 - 128.3) + (696.9 + 698.9) * (128.3 - 122.3) + (698.9 +$

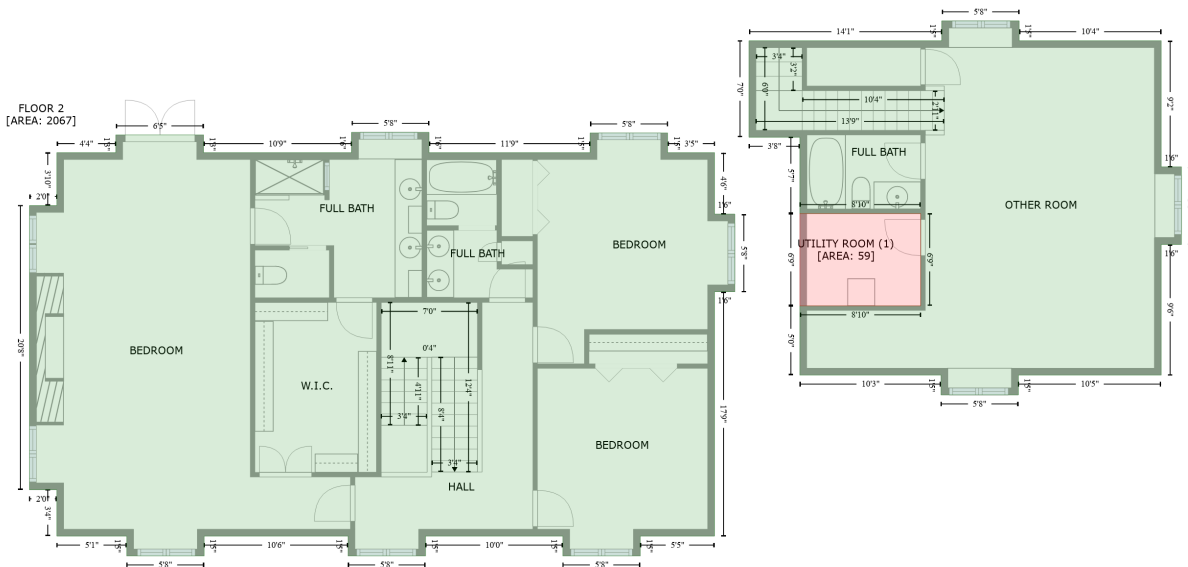
3 Ambleside Drive, Belleair, Pinellas County, Florida, United States, 33756

Gross Living Area: 4232 sq. ft

Space	Area (sq. ft)	Calculation <small>Coordinate Polygon Area Algorithm using inches</small>
STORAGE (Non-living area)	139	$813.9 * (122.3 - 122.3)) * 0.5 * 0.00694$ $-((987.4 + 987.4) * (122.3 - 243.8) + (987.4 + 981.4) * (243.8 - 243.8) + (981.4 + 981.4) * (243.8 - 239.8) + (981.4 + 817.9) * (239.8 - 239.8) + (817.9 + 817.9) * (239.8 - 128.3) + (817.9 + 813.9) * (128.3 - 128.3) + (813.9 + 813.9) * (128.3 - 122.3) + (813.9 + 987.4) * (122.3 - 122.3)) * 0.5 * 0.00694$

3 Ambleside Drive, Belleair, Pinellas County, Florida, United States, 33756

Gross Living Area: 4232 sq. ft



Space	Area (sq. ft)	Calculation <small>Coordinate Polygon Area Algorithm using inches</small>
FLOOR 2 (Living area)	2067	$ \begin{aligned} & -((347.3 + 347.3) * (317.7 - 335.5) + (347.3 + 488.1) * (335.5 - 335.5) + (488.1 + 488.1) * (335.5 - 318.3) \\ & + (488.1 + 555.9) * (318.3 - 318.3) + (555.9 + 555.9) * (318.3 - 335.5) + (555.9 + 596.9) * \\ & (335.5 - 335.5) + (596.9 + 596.9) * (335.5 - 389.1) + (596.9 + 614.7) * (389.1 - 389.1) + (614.7 + \\ & 614.7) * (389.1 - 456.9) + (614.7 + 596.9) * (456.9 - 456.9) + (596.9 + 596.9) * (456.9 - 670.2) + \\ & (596.9 + 532) * (670.2 - 670.2) + (532 + 532) * (670.2 - 687.5) + (532 + 464.3) * (687.5 - 687.5) + \\ & (464.3 + 464.3) * (687.5 - 670.2) + (464.3 + 344.2) * (670.2 - 670.2) + (344.2 + 344.2) * (670.2 - \\ & 687.5) + (344.2 + 276.6) * (687.5 - 687.5) + (276.6 + 276.6) * (687.5 - 670.2) + (276.6 + 150.7) * \\ & (670.2 - 670.2) + (150.7 + 150.7) * (670.2 - 687.5) + (150.7 + 83) * (687.5 - 687.5) + (83 + 83) * \\ & (687.5 - 670.2) + (83 + 21.9) * (670.2 - 670.2) + (21.9 + 21.9) * (670.2 - 629.8) + (21.9 + -2.1) * \\ & (629.8 - 629.8) + (-2.1 + -2.1) * (629.8 - 381.6) + (-2.1 + 21.9) * (381.6 - 381.6) + (21.9 + 21.9) * \\ & (381.6 - 335.5) + (21.9 + 73.5) * (335.5 - 335.5) + (73.5 + 73.5) * (335.5 - 320) + (73.5 + 150.2) * \\ & (320 - 320) + (150.2 + 150.2) * (320 - 335.5) + (150.2 + 279.5) * (335.5 - 335.5) + (279.5 + 279.5) * \\ & (335.5 - 317.7) + (279.5 + 347.3) * (317.7 - 317.7) * 0.5 * 0.00694 + -((863.3 + 863.3) * (220.4 - \\ & 237.8) + (863.3 + 987.4) * (237.8 - 237.8) + (987.4 + 987.4) * (237.8 - 347.9) + (987.4 + 1005.2) * \\ & (347.9 - 347.9) + (1005.2 + 1005.2) * (347.9 - 415.6) + (1005.2 + 987.4) * (415.6 - 415.6) + \\ & (987.4 + 987.4) * (415.6 - 529.6) + (987.4 + 862.6) * (529.6 - 529.6) + (862.6 + 862.6) * (529.6 - \\ & 546.9) + (862.6 + 794.9) * (546.9 - 546.9) + (794.9 + 794.9) * (546.9 - 529.6) + (794.9 + 671.6) * \\ & (529.6 - 529.6) + (671.6 + 671.6) * (529.6 - 469.2) + (671.6 + 777.2) * (469.2 - 469.2) + (777.2 + \\ & 777.2) * (469.2 - 388.6) + (777.2 + 671.6) * (388.6 - 388.6) + (671.6 + 671.6) * (388.6 - 322) + \\ & (671.6 + 627.1) * (322 - 322) + (627.1 + 627.1) * (322 - 237.8) + (627.1 + 795.6) * (237.8 - 237.8) \\ & + (795.6 + 795.6) * (237.8 - 220.4) + (795.6 + 863.3) * (220.4 - 220.4) * 0.5 * 0.00694 \end{aligned} $
UTILITY ROOM (Non-living area)	59	$ \begin{aligned} & -((777.2 + 777.2) * (388.6 - 469.2) + (777.2 + 671.6) * (469.2 - 469.2) + (671.6 + 671.6) * (469.2 - \\ & 388.6) + (671.6 + 777.2) * (388.6 - 388.6) * 0.5 * 0.00694 \end{aligned} $