

2702 Rosalind Avenue Southwest, South Roanoke, Roanoke, Roanoke city, Virginia, United States, 24014



Property summary


 **0** Garages

 **3** Bedrooms

 **2** Bathrooms

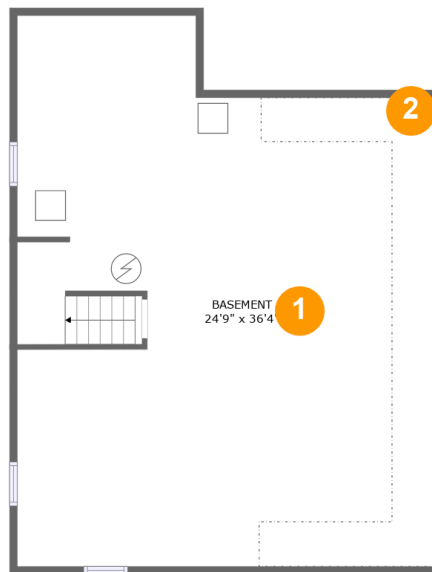
 **1** Half baths

 **3** Floors

 **2,339** Gross living area sqft

 **3,879** Total sqft

**2702 Rosalind Avenue Southwest, South Roanoke,
Roanoke, Roanoke city, Virginia, United States, 24014**



Room dimensions

Floor 1

Total sqft: 982 Living area: 0

#		Dimensions	sqft	Counted as living area
1	Basement	24'9" x 36'4"	772 sq. ft	No
2	Crawl Space	11'6" x 30'11"	138 sq. ft	No

2702 Rosalind Avenue Southwest, South Roanoke, Roanoke, Roanoke city, Virginia, United States, 24014



Room dimensions

Floor 2

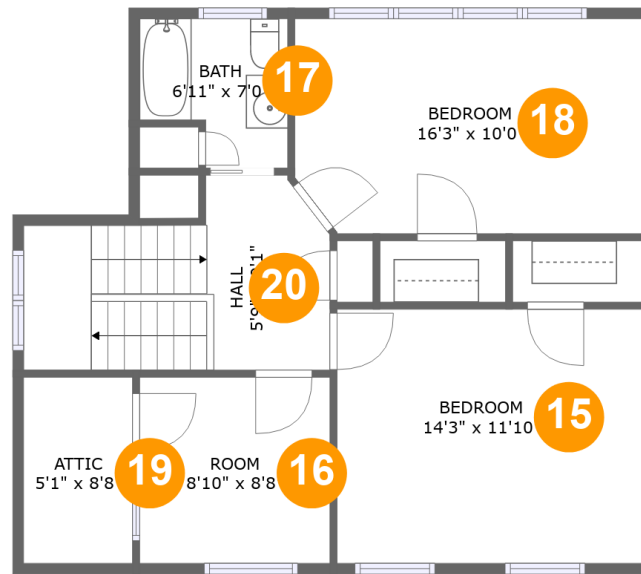
Total sqft: 2162 Living area: 1655

#		Dimensions	sqft	Counted as living area
3	Dining Area	16'0" x 13'0"	207 sq. ft	Yes
4	Screened Porch	13'9" x 17'4"	240 sq. ft	No
5	Living Room	16'0" x 18'2"	291 sq. ft	Yes
6	Laundry	5'0" x 5'10"	29 sq. ft	Yes
7	WC	3'6" x 5'10"	20 sq. ft	Yes
8	WC	3'6" x 4'7"	16 sq. ft	Yes
9	W.I.C.	6'2" x 8'11"	49 sq. ft	Yes
10	Primary Bath	8'9" x 14'6"	103 sq. ft	Yes
11	Porch	21'9" x 8'1"	230 sq. ft	No
12	Room	12'11" x 21'5"	267 sq. ft	Yes
13	Primary Bedroom	13'10" x 23'7"	275 sq. ft	Yes

**2702 Rosalind Avenue Southwest, South Roanoke,
Roanoke, Roanoke city, Virginia, United States, 24014**

#		Dimensions	sqft	Counted as living area
14	Kitchen	13'2" x 23'11"	256 sq. ft	Yes

**2702 Rosalind Avenue Southwest, South Roanoke,
Roanoke, Roanoke city, Virginia, United States, 24014**



Room dimensions

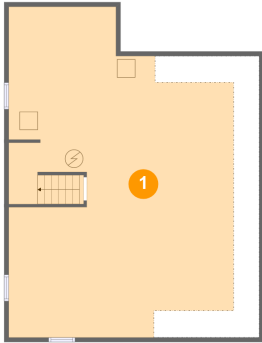
Floor 3

Total sqft: 735 Living area: 684

#		Dimensions	sqft	Counted as living area
15	Bedroom	14'3" x 11'10"	169 sq. ft	Yes
16	Room	8'10" x 8'8"	77 sq. ft	Yes
17	Bath	6'11" x 7'0"	41 sq. ft	Yes
18	Bedroom	16'3" x 10'0"	160 sq. ft	Yes
19	Attic	5'1" x 8'8"	44 sq. ft	No
20	Hall	5'9" x 9'1"	107 sq. ft	Yes

2702 Rosalind Avenue Southwest, South Roanoke, Roanoke, Roanoke city, Virginia, United States, 24014

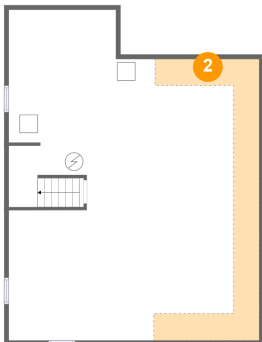
1 Floor 1 - Basement



Dimensions: 24'9" x 36'4"
Area: 772 sq. ft
Counted as living area: No

Heated: Yes
Finished: No
Enclosed: Yes
Contiguous: Yes
Permitted: Yes
Wet space: No
Addition: No
Conversion: No

2 Floor 1 - Crawl Space



Dimensions: 11'6" x 30'11"
Area: 138 sq. ft
Counted as living area: No

Heated: No
Finished: No
Enclosed: No
Contiguous: Yes
Permitted: No
Wet space: No
Addition: No
Conversion: No

2702 Rosalind Avenue Southwest, South Roanoke, Roanoke, Roanoke city, Virginia, United States, 24014

3 Floor 2 - Dining Area



Dimensions: 16'0" x 13'0"
Area: 207 sq. ft
Counted as living area: Yes

Heated: Yes
Finished: Yes
Enclosed: Yes
Contiguous: Yes
Permitted: Yes
Wet space: No
Addition: No
Conversion: No

4 Floor 2 - Screened Porch



Dimensions: 13'9" x 17'4"
Area: 240 sq. ft
Counted as living area: No

Heated: No
Finished: Yes
Enclosed: No
Contiguous: Yes
Permitted: Yes
Wet space: No
Addition: No
Conversion: No

5 Floor 2 - Living Room



Dimensions: 16'0" x 18'2"
Area: 291 sq. ft
Counted as living area: Yes

Heated: Yes
Finished: Yes
Enclosed: Yes
Contiguous: Yes
Permitted: Yes
Wet space: No
Addition: No
Conversion: No

2702 Rosalind Avenue Southwest, South Roanoke, Roanoke, Roanoke city, Virginia, United States, 24014

6 Floor 2 - Laundry



Dimensions: 5'0" x 5'10"
Area: 29 sq. ft
Counted as living area: Yes

Heated: Yes
Finished: Yes
Enclosed: Yes
Contiguous: Yes
Permitted: Yes
Wet space: No
Addition: No
Conversion: No

7 Floor 2 - WC



Dimensions: 3'6" x 5'10"
Area: 20 sq. ft
Counted as living area: Yes

Heated: Yes
Finished: Yes
Enclosed: Yes
Contiguous: Yes
Permitted: Yes
Wet space: Yes
Addition: No
Conversion: No

8 Floor 2 - WC



Dimensions: 3'6" x 4'7"
Area: 16 sq. ft
Counted as living area: Yes

Heated: Yes
Finished: Yes
Enclosed: Yes
Contiguous: Yes
Permitted: Yes
Wet space: Yes
Addition: No
Conversion: No

2702 Rosalind Avenue Southwest, South Roanoke, Roanoke, Roanoke city, Virginia, United States, 24014

9 Floor 2 - W.I.C.



Dimensions: 6'2" x 8'11"
Area: 49 sq. ft
Counted as living area: Yes

Heated: Yes
Finished: Yes
Enclosed: Yes
Contiguous: Yes
Permitted: Yes
Wet space: No
Addition: No
Conversion: No

10 Floor 2 - Primary Bath



Dimensions: 8'9" x 14'6"
Area: 103 sq. ft
Counted as living area: Yes

Heated: Yes
Finished: Yes
Enclosed: Yes
Contiguous: Yes
Permitted: Yes
Wet space: Yes
Addition: No
Conversion: No

11 Floor 2 - Porch



Dimensions: 21'9" x 8'1"
Area: 230 sq. ft
Counted as living area: No

Heated: No
Finished: Yes
Enclosed: No
Contiguous: Yes
Permitted: Yes
Wet space: No
Addition: No
Conversion: No

2702 Rosalind Avenue Southwest, South Roanoke, Roanoke, Roanoke city, Virginia, United States, 24014

12 Floor 2 - Room



Dimensions: 12'11" x 21'5"
Area: 267 sq. ft
Counted as living area: Yes

Heated: Yes
Finished: Yes
Enclosed: Yes
Contiguous: Yes
Permitted: Yes
Wet space: No
Addition: No
Conversion: No

13 Floor 2 - Primary Bedroom



Dimensions: 13'10" x 23'7"
Area: 275 sq. ft
Counted as living area: Yes

Heated: Yes
Finished: Yes
Enclosed: Yes
Contiguous: Yes
Permitted: Yes
Wet space: No
Addition: No
Conversion: No

14 Floor 2 - Kitchen

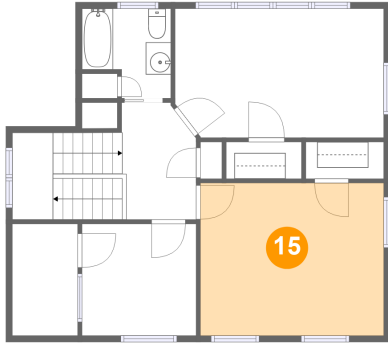


Dimensions: 13'2" x 23'11"
Area: 256 sq. ft
Counted as living area: Yes

Heated: Yes
Finished: Yes
Enclosed: Yes
Contiguous: Yes
Permitted: Yes
Wet space: No
Addition: No
Conversion: No

2702 Rosalind Avenue Southwest, South Roanoke, Roanoke, Roanoke city, Virginia, United States, 24014

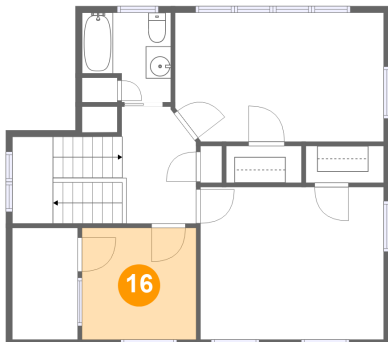
15 Floor 3 - Bedroom



Dimensions: 14'3" x 11'10"
Area: 169 sq. ft
Counted as living area: Yes

Heated: Yes
Finished: Yes
Enclosed: Yes
Contiguous: Yes
Permitted: Yes
Wet space: No
Addition: No
Conversion: No

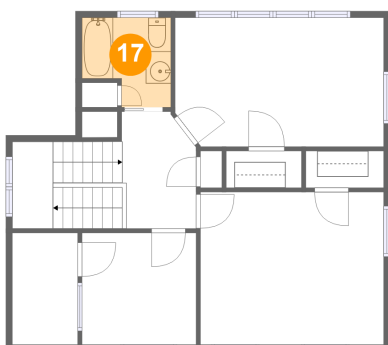
16 Floor 3 - Room



Dimensions: 8'10" x 8'8"
Area: 77 sq. ft
Counted as living area: Yes

Heated: Yes
Finished: Yes
Enclosed: Yes
Contiguous: Yes
Permitted: Yes
Wet space: No
Addition: No
Conversion: No

17 Floor 3 - Bath

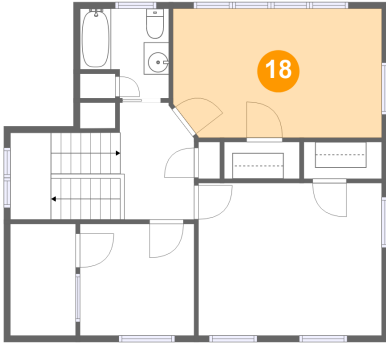


Dimensions: 6'11" x 7'0"
Area: 41 sq. ft
Counted as living area: Yes

Heated: Yes
Finished: Yes
Enclosed: Yes
Contiguous: Yes
Permitted: Yes
Wet space: Yes
Addition: No
Conversion: No

**2702 Rosalind Avenue Southwest, South Roanoke,
Roanoke, Roanoke city, Virginia, United States, 24014**

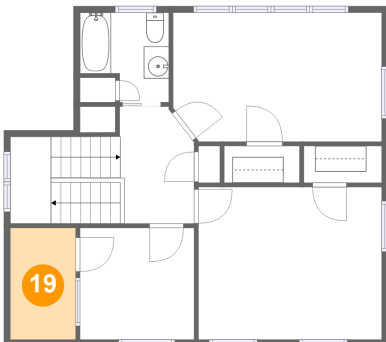
18 Floor 3 - Bedroom



Dimensions: 16'3" x 10'0"
Area: 160 sq. ft
Counted as living area: Yes

Heated: Yes
Finished: Yes
Enclosed: Yes
Contiguous: Yes
Permitted: Yes
Wet space: No
Addition: No
Conversion: No

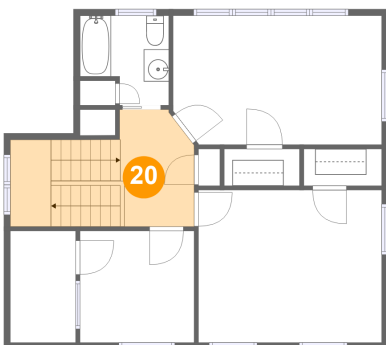
19 Floor 3 - Attic



Dimensions: 5'1" x 8'8"
Area: 44 sq. ft
Counted as living area: No

Heated: No
Finished: No
Enclosed: Yes
Contiguous: Yes
Permitted: Yes
Wet space: No
Addition: No
Conversion: No

20 Floor 3 - Hall



Dimensions: 5'9" x 9'1"
Area: 107 sq. ft
Counted as living area: Yes

Heated: Yes
Finished: Yes
Enclosed: Yes
Contiguous: Yes
Permitted: Yes
Wet space: No
Addition: No
Conversion: No