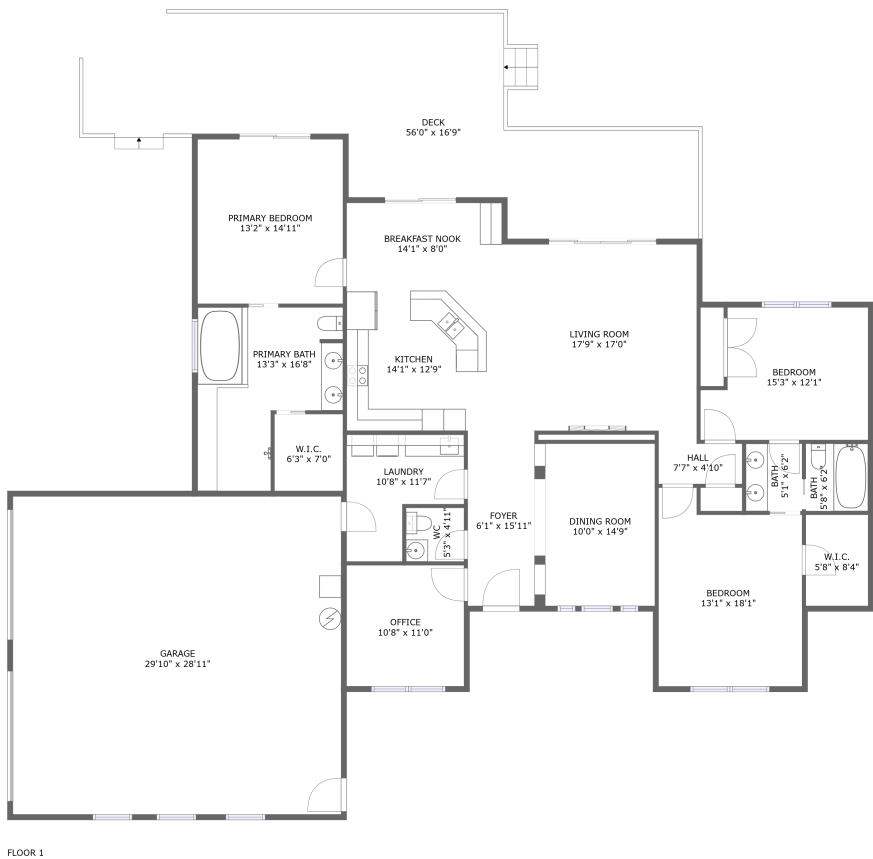




Home report


45107 Southwest Plumlee Road, Forest Grove, Washington  
County, Oregon, United States, 97116




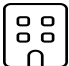
Property summary


 **1** Garages


 **3** Bedrooms

 **2** Bathrooms

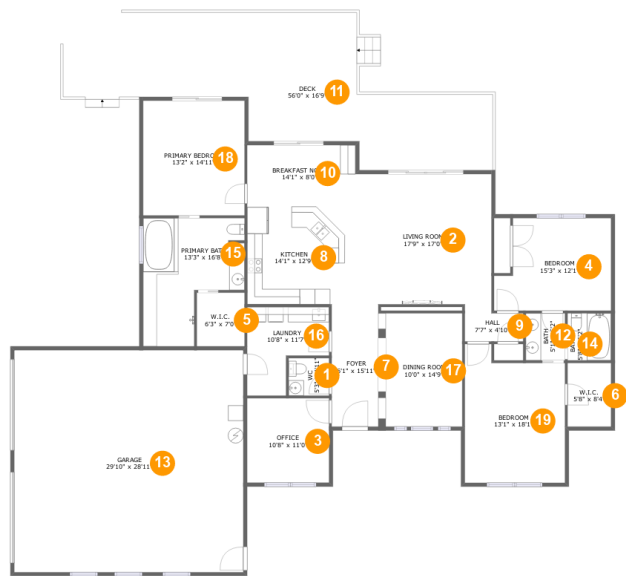
 **1** Half baths

 **1** Floors

 **2,249** Gross living area sqft

 **3,848** Total sqft

45107 Southwest Plumlee Road, Forest Grove, Washington  
County, Oregon, United States, 97116



Room dimensions

Floor 1 Total sqft: 3848    Living area: 2249

#		Dimensions	sqft	Counted as living area
1	WC	5'3" x 4'11"	26 sq. ft	Yes
2	Living Room	17'9" x 17'0"	301 sq. ft	Yes
3	Office	10'8" x 11'0"	118 sq. ft	Yes
4	Bedroom	15'3" x 12'1"	166 sq. ft	Yes
5	W.I.C.	6'3" x 7'0"	44 sq. ft	Yes
6	W.I.C.	5'8" x 8'4"	47 sq. ft	Yes
7	Foyer	6'1" x 15'11"	97 sq. ft	Yes
8	Kitchen	14'1" x 12'9"	180 sq. ft	Yes
9	Hall	7'7" x 4'10"	32 sq. ft	Yes
10	Breakfast Nook	14'1" x 8'0"	113 sq. ft	Yes
11	Deck	56'0" x 16'9"	692 sq. ft	No

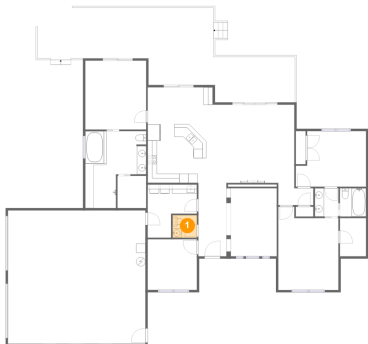
## Home report

**45107 Southwest Plumlee Road, Forest Grove, Washington  
County, Oregon, United States, 97116**

#		Dimensions	sqft	Counted as living area
12	Bath	5'1" x 6'2"	31 sq. ft	Yes
13	Garage	29'10" x 28'11"	864 sq. ft	No
14	Bath	5'8" x 6'2"	35 sq. ft	Yes
15	Primary Bath	13'3" x 16'8"	172 sq. ft	Yes
16	Laundry	10'8" x 11'7"	94 sq. ft	Yes
17	Dining Room	10'0" x 14'9"	152 sq. ft	Yes
18	Primary Bedroom	13'2" x 14'11"	198 sq. ft	Yes
19	Bedroom	13'1" x 18'1"	212 sq. ft	Yes

45107 Southwest Plumlee Road, Forest Grove, Washington  
County, Oregon, United States, 97116

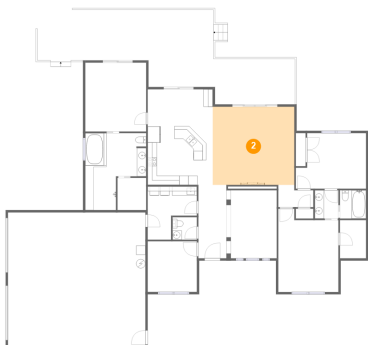
1 Floor 1 - WC



Dimensions: 5'3" x 4'11"  
Area: 26 sq. ft  
Counted as living area: Yes

Heated: Yes  
Finished: Yes  
Enclosed: Yes  
Contiguous: Yes  
Permitted: Yes  
Wet space: Yes  
Addition: No  
Conversion: No

2 Floor 1 - Living Room

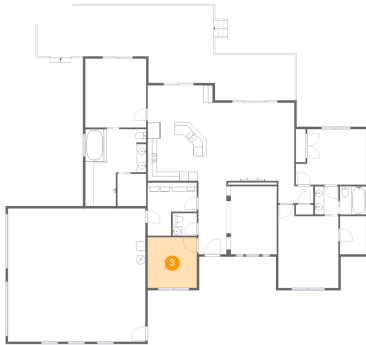


Dimensions: 17'9" x 17'0"  
Area: 301 sq. ft  
Counted as living area: Yes

Heated: Yes  
Finished: Yes  
Enclosed: Yes  
Contiguous: Yes  
Permitted: Yes  
Wet space: No  
Addition: No  
Conversion: No

45107 Southwest Plumlee Road, Forest Grove, Washington  
County, Oregon, United States, 97116

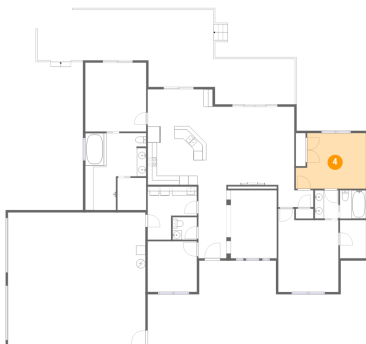
### 3 Floor 1 - Office



Dimensions: 10'8" x 11'0"  
Area: 118 sq. ft  
Counted as living area: Yes

Heated: Yes  
Finished: Yes  
Enclosed: Yes  
Contiguous: Yes  
Permitted: Yes  
Wet space: No  
Addition: No  
Conversion: No

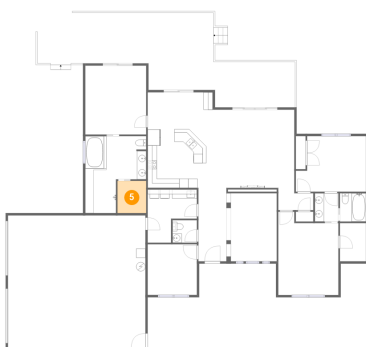
### 4 Floor 1 - Bedroom



Dimensions: 15'3" x 12'1"  
Area: 166 sq. ft  
Counted as living area: Yes

Heated: Yes  
Finished: Yes  
Enclosed: Yes  
Contiguous: Yes  
Permitted: Yes  
Wet space: No  
Addition: No  
Conversion: No

### 5 Floor 1 - W.I.C.

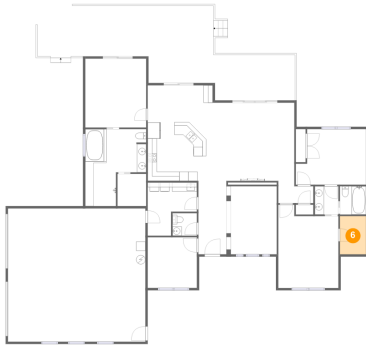


Dimensions: 6'3" x 7'0"  
Area: 44 sq. ft  
Counted as living area: Yes

Heated: Yes  
Finished: Yes  
Enclosed: Yes  
Contiguous: Yes  
Permitted: Yes  
Wet space: No  
Addition: No  
Conversion: No

45107 Southwest Plumlee Road, Forest Grove, Washington  
County, Oregon, United States, 97116

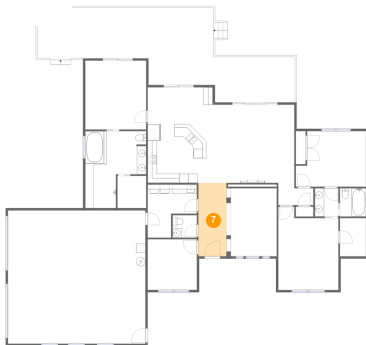
## 6 Floor 1 - W.I.C.



Dimensions: 5'8" x 8'4"  
Area: 47 sq. ft  
Counted as living area: Yes

Heated: Yes  
Finished: Yes  
Enclosed: Yes  
Contiguous: Yes  
Permitted: Yes  
Wet space: No  
Addition: No  
Conversion: No

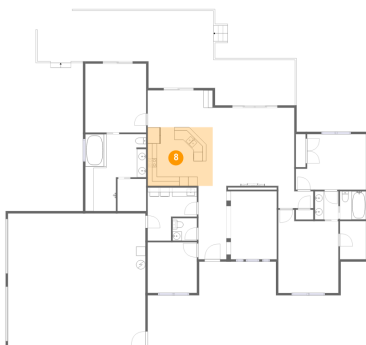
## 7 Floor 1 - Foyer



Dimensions: 6'1" x 15'11"  
Area: 97 sq. ft  
Counted as living area: Yes

Heated: Yes  
Finished: Yes  
Enclosed: Yes  
Contiguous: Yes  
Permitted: Yes  
Wet space: No  
Addition: No  
Conversion: No

## 8 Floor 1 - Kitchen

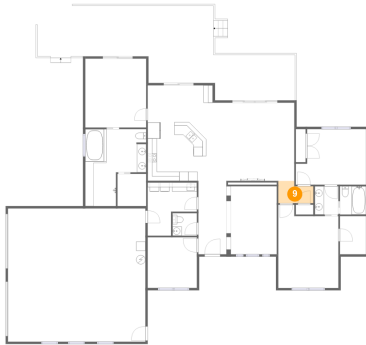


Dimensions: 14'1" x 12'9"  
Area: 180 sq. ft  
Counted as living area: Yes

Heated: Yes  
Finished: Yes  
Enclosed: Yes  
Contiguous: Yes  
Permitted: Yes  
Wet space: No  
Addition: No  
Conversion: No

45107 Southwest Plumlee Road, Forest Grove, Washington  
County, Oregon, United States, 97116

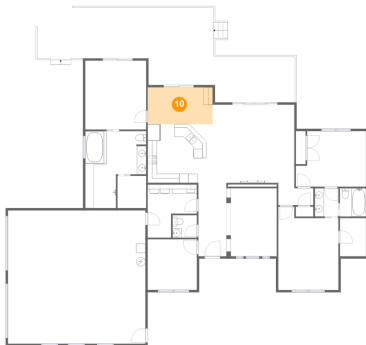
## 9 Floor 1 - Hall



Dimensions: 7'7" x 4'10"  
Area: 32 sq. ft  
Counted as living area: Yes

Heated: Yes  
Finished: Yes  
Enclosed: Yes  
Contiguous: Yes  
Permitted: Yes  
Wet space: No  
Addition: No  
Conversion: No

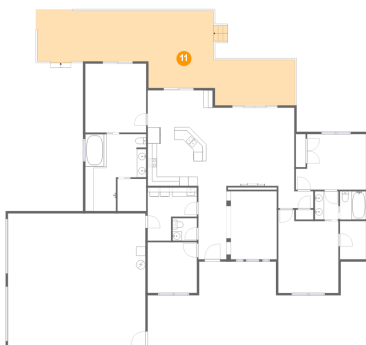
## 10 Floor 1 - Breakfast Nook



Dimensions: 14'1" x 8'0"  
Area: 113 sq. ft  
Counted as living area: Yes

Heated: Yes  
Finished: Yes  
Enclosed: Yes  
Contiguous: Yes  
Permitted: Yes  
Wet space: No  
Addition: No  
Conversion: No

## 11 Floor 1 - Deck

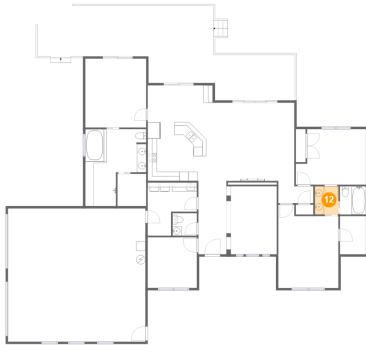


Dimensions: 56'0" x 16'9"  
Area: 692 sq. ft  
Counted as living area: No

Heated: No  
Finished: Yes  
Enclosed: No  
Contiguous: Yes  
Permitted: Yes  
Wet space: No  
Addition: No  
Conversion: No

45107 Southwest Plumlee Road, Forest Grove, Washington  
County, Oregon, United States, 97116

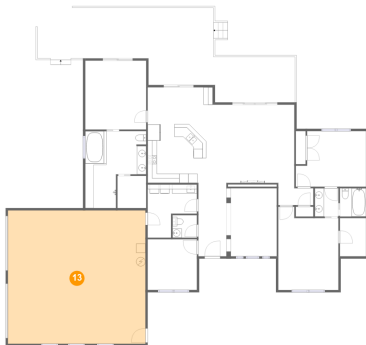
## 12 Floor 1 - Bath



Dimensions: 5'1" x 6'2"  
Area: 31 sq. ft  
Counted as living area: Yes

Heated: Yes  
Finished: Yes  
Enclosed: Yes  
Contiguous: Yes  
Permitted: Yes  
Wet space: Yes  
Addition: No  
Conversion: No

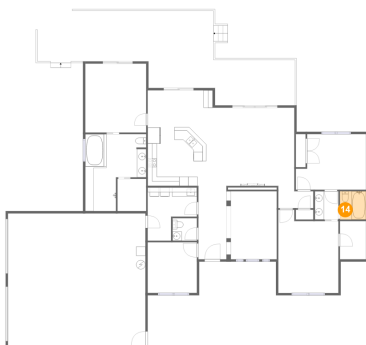
## 13 Floor 1 - Garage



Dimensions: 29'10" x 28'11"  
Area: 864 sq. ft  
Counted as living area: No

Heated: No  
Finished: No  
Enclosed: Yes  
Contiguous: Yes  
Permitted: Yes  
Wet space: No  
Addition: No  
Conversion: No

## 14 Floor 1 - Bath

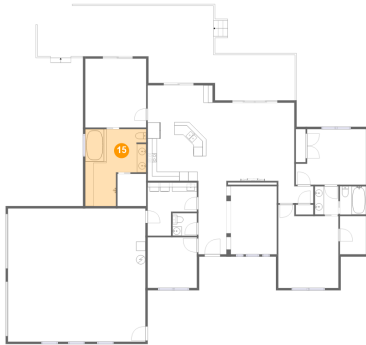


Dimensions: 5'8" x 6'2"  
Area: 35 sq. ft  
Counted as living area: Yes

Heated: Yes  
Finished: Yes  
Enclosed: Yes  
Contiguous: Yes  
Permitted: Yes  
Wet space: Yes  
Addition: No  
Conversion: No

45107 Southwest Plumlee Road, Forest Grove, Washington  
County, Oregon, United States, 97116

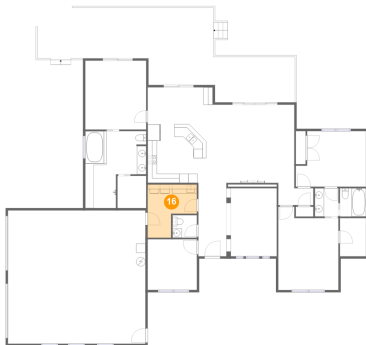
### 15 Floor 1 - Primary Bath



Dimensions: 13'3" x 16'8"  
Area: 172 sq. ft  
Counted as living area: Yes

Heated: Yes  
Finished: Yes  
Enclosed: Yes  
Contiguous: Yes  
Permitted: Yes  
Wet space: Yes  
Addition: No  
Conversion: No

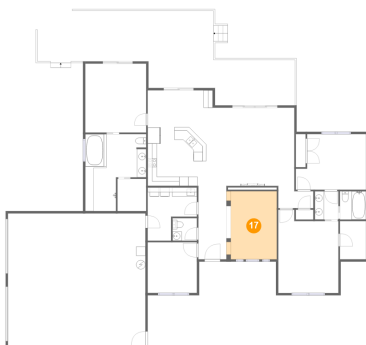
### 16 Floor 1 - Laundry



Dimensions: 10'8" x 11'7"  
Area: 94 sq. ft  
Counted as living area: Yes

Heated: Yes  
Finished: Yes  
Enclosed: Yes  
Contiguous: Yes  
Permitted: Yes  
Wet space: No  
Addition: No  
Conversion: No

### 17 Floor 1 - Dining Room

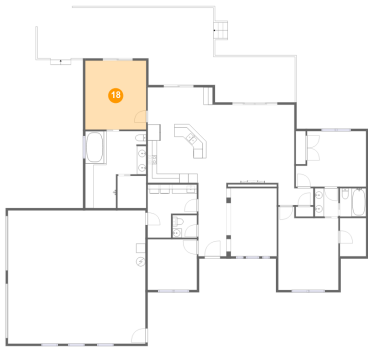


Dimensions: 10'0" x 14'9"  
Area: 152 sq. ft  
Counted as living area: Yes

Heated: Yes  
Finished: Yes  
Enclosed: Yes  
Contiguous: Yes  
Permitted: Yes  
Wet space: No  
Addition: No  
Conversion: No

45107 Southwest Plumlee Road, Forest Grove, Washington  
County, Oregon, United States, 97116

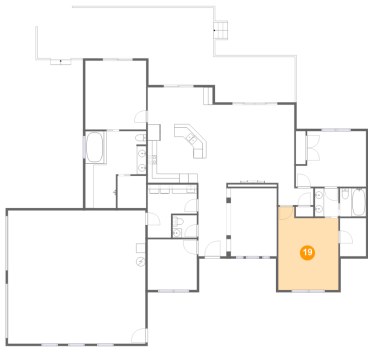
18 Floor 1 - Primary Bedroom



Dimensions: 13'2" x 14'11"  
Area: 198 sq. ft  
Counted as living area: Yes

Heated: Yes  
Finished: Yes  
Enclosed: Yes  
Contiguous: Yes  
Permitted: Yes  
Wet space: No  
Addition: No  
Conversion: No

19 Floor 1 - Bedroom



Dimensions: 13'1" x 18'1"  
Area: 212 sq. ft  
Counted as living area: Yes

Heated: Yes  
Finished: Yes  
Enclosed: Yes  
Contiguous: Yes  
Permitted: Yes  
Wet space: No  
Addition: No  
Conversion: No