

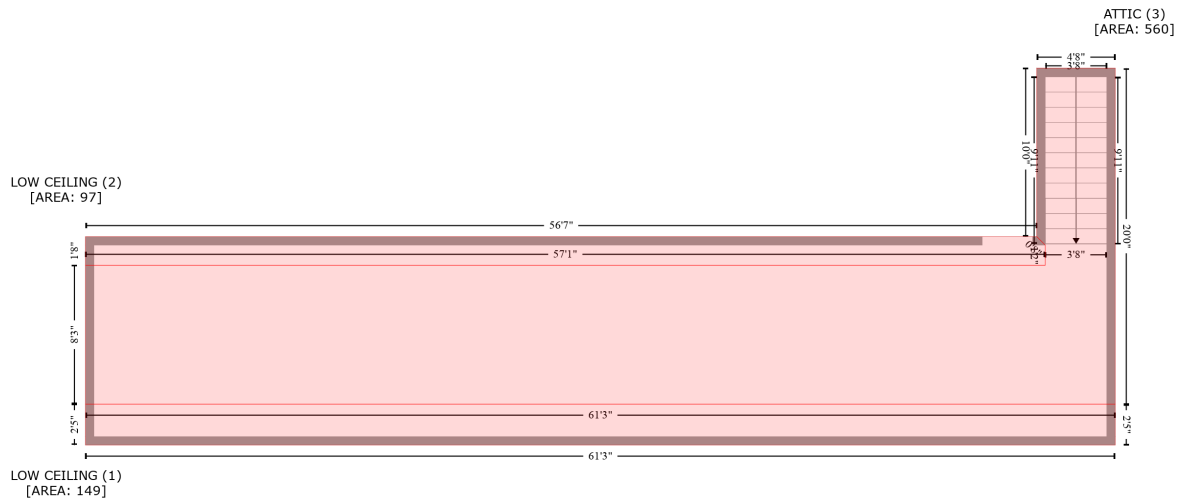
9575 Old Lanesville Road, Georgetown, Floyd County, Indiana, United States, 47122, Garage

Gross Living Area: 506 sq. ft

Space	Area (sq. ft)	Calculation <small>Coordinate Polygon Area Algorithm using inches</small>
UNDEFINED (Non-living area)	24	$288.9 * (476.5 - 458.8) + (288.9 + 290.9) * (458.8 - 452.8) + (290.9 + 440.5) * (452.8 - 452.8) * 0.5 * 0.00694$
GARAGE (Non-living area)	1823	$-((284.9 + 284.9) * (480.5 - 587.1) + (284.9 + 288.9) * (587.1 - 587.1) + (288.9 + 288.9) * (587.1 - 593.1) + (288.9 + 253.9) * (593.1 - 593.1) + (253.9 + 253.9) * (593.1 - 480.5) + (253.9 + 284.9) * (480.5 - 480.5)) * 0.5 * 0.00694$
PORCH (Non-living area)	621	$-((698.9 + 698.9) * (102.3 - 593.1) + (698.9 + 434.5) * (593.1 - 593.1) + (434.5 + 434.5) * (593.1 - 587.1) + (434.5 + 440.5) * (587.1 - 587.1) + (440.5 + 440.5) * (587.1 - 452.8) + (440.5 + 290.9) * (452.8 - 452.8) + (290.9 + 290.9) * (452.8 - 357.1) + (290.9 + -36) * (357.1 - 357.1) + (-36 + -36) * (357.1 - 102.3) + (-36 + 698.9) * (102.3 - 102.3)) * 0.5 * 0.00694$

9575 Old Lanesville Road, Georgetown, Floyd County, Indiana, United States, 47122, Garage

Gross Living Area: 506 sq. ft



Space	Area (sq. ft)	Calculation <small>Coordinate Polygon Area Algorithm using inches</small>
LOW CEILING (Non-living area)	149	$-((702.7 + 702.7) * (444.5 - 473.7) + (702.7 + -32.2) * (473.7 - 473.7) + (-32.2 + -32.2) * (473.7 - 444.5) + (-32.2 + 702.7) * (444.5 - 444.5)) * 0.5 * 0.00694$
LOW CEILING (Non-living area)	97	$-((646.7 + 652.7) * (324.9 - 330.9) + (652.7 + 652.7) * (330.9 - 345.4) + (652.7 + -32.2) * (345.4 - 345.4) + (-32.2 + -32.2) * (345.4 - 324.9) + (-32.2 + 646.7) * (324.9 - 324.9)) * 0.5 * 0.00694$
ATTIC (Non-living area)	560	$-((702.7 + 702.7) * (204.6 - 444.5) + (702.7 + -32.2) * (444.5 - 444.5) + (-32.2 + -32.2) * (444.5 - 345.4) + (-32.2 + 652.7) * (345.4 - 345.4) + (652.7 + 652.7) * (345.4 - 330.9) + (652.7 + 646.7) * (330.9 - 324.9) + (646.7 + 646.7) * (324.9 - 204.6) + (646.7 + 702.7) * (204.6 - 204.6)) * 0.5 * 0.00694$