

Home data report

570 Morgan St, Elgin, IL, US




Total Area: 1023 sq. ft

Below Ground: 0 sq. ft, 1st Floor: 1023 sq. ft, 2nd Floor: 0 sq. ft

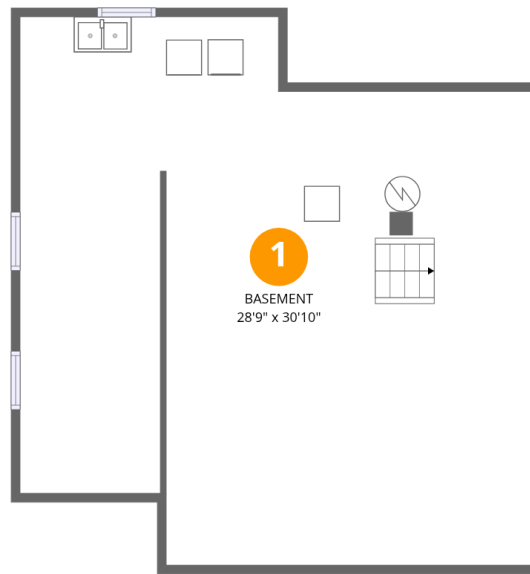
Excluded: Basement 795 sq. ft, Low ceiling 272 sq. ft, Attic 221 sq. ft, Walls: 178 sq. ft

Property summary

 **3** Floors

 **2** Bedrooms

 **1** Bathrooms



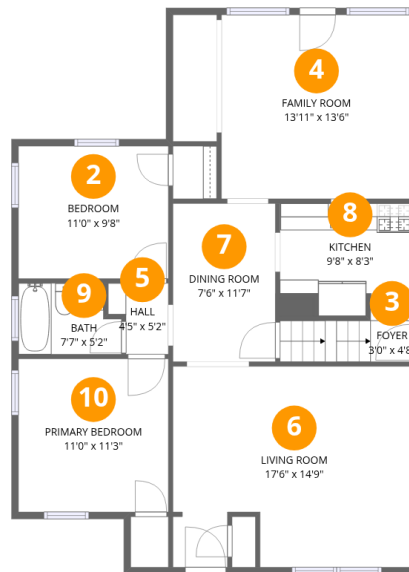
Room dimensions

Floor 1 Below grade

Total: 0 sqft

Excluded: 795 sqft

#		Dimensions	sqft	Counted as living area
1	Basement	28'9" x 30'10"	789 sq. ft	No



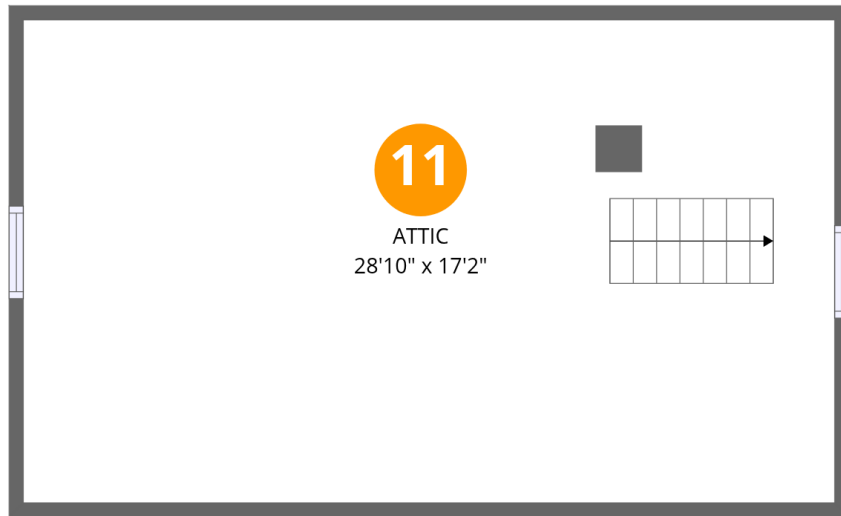
Room dimensions

Floor 2

Total: 1023 sqft

Excluded: 0 sqft

#		Dimensions	sqft	Counted as living area
2	Bedroom	11'0" x 9'8"	107 sq. ft	Yes
3	Foyer	3'0" x 4'8"	34 sq. ft	Yes
4	Family Room	13'11" x 13'6"	188 sq. ft	Yes
5	Hall	4'5" x 5'2"	19 sq. ft	Yes
6	Living Room	17'6" x 14'9"	247 sq. ft	Yes
7	Dining Room	7'6" x 11'7"	87 sq. ft	Yes
8	Kitchen	9'8" x 8'3"	70 sq. ft	Yes
9	Bath	7'7" x 5'2"	36 sq. ft	Yes
10	Primary Bedroom	11'0" x 11'3"	123 sq. ft	Yes



Room dimensions

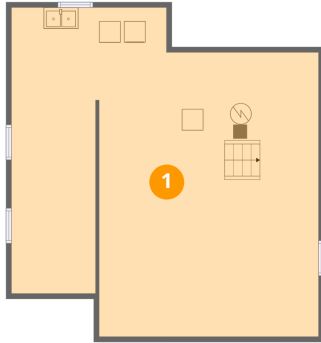
Floor 3

Total: 0sqft

Excluded: 493sqft

#		Dimensions	sqft	Counted as living area
11	Attic	28'10" x 17'2"	221 sq. ft	No

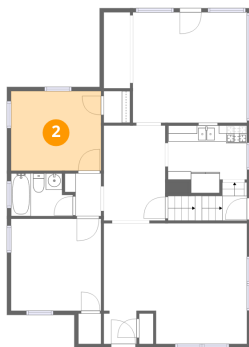
1 Floor 1 - Basement



Dimensions: 28'9" x 30'10"
Area: 789 sq. ft
Counted as living area: No

Heated: Yes
Finished: No
Enclosed: Yes
Contiguous: Yes
Permitted: Yes
Wet space: No
Addition: No
Conversion: No

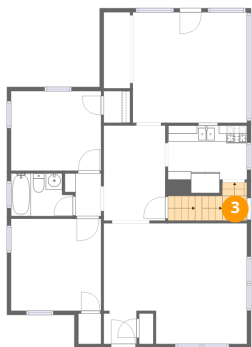
2 Floor 2 - Bedroom



Dimensions: 11'0" x 9'8"
Area: 107 sq. ft
Counted as living area: Yes

Heated: Yes
Finished: Yes
Enclosed: Yes
Contiguous: Yes
Permitted: Yes
Wet space: No
Addition: No
Conversion: No

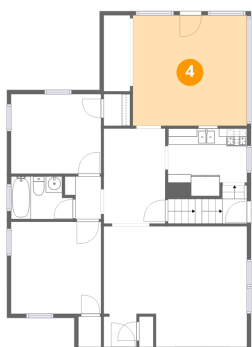
3 Floor 2 - Foyer



Dimensions: 3'0" x 4'8"
Area: 34 sq. ft
Counted as living area: Yes

Heated: Yes
Finished: Yes
Enclosed: Yes
Contiguous: Yes
Permitted: Yes
Wet space: No
Addition: No
Conversion: No

4 Floor 2 - Family Room



Dimensions: 13'11" x 13'6"
Area: 188 sq. ft
Counted as living area: Yes

Heated: Yes
Finished: Yes
Enclosed: Yes
Contiguous: Yes
Permitted: Yes
Wet space: No
Addition: No
Conversion: No

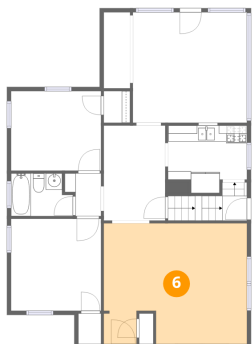
5 Floor 2 - Hall



Dimensions: 4'5" x 5'2"
Area: 19 sq. ft
Counted as living area: Yes

Heated: Yes
Finished: Yes
Enclosed: Yes
Contiguous: Yes
Permitted: Yes
Wet space: No
Addition: No
Conversion: No

6 Floor 2 - Living Room



Dimensions: 17'6" x 14'9"
Area: 247 sq. ft
Counted as living area: Yes

Heated: Yes
Finished: Yes
Enclosed: Yes
Contiguous: Yes
Permitted: Yes
Wet space: No
Addition: No
Conversion: No

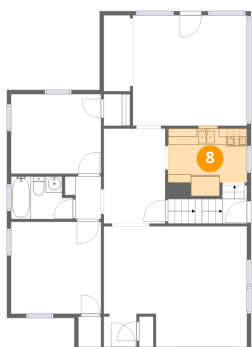
7 Floor 2 - Dining Room



Dimensions: 7'6" x 11'7"
Area: 87 sq. ft
Counted as living area: Yes

Heated: Yes
Finished: Yes
Enclosed: Yes
Contiguous: Yes
Permitted: Yes
Wet space: No
Addition: No
Conversion: No

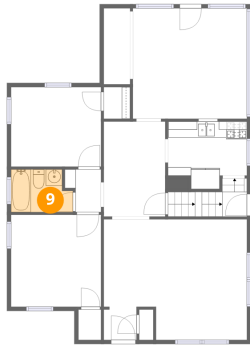
8 Floor 2 - Kitchen



Dimensions: 9'8" x 8'3"
Area: 70 sq. ft
Counted as living area: Yes

Heated: Yes
Finished: Yes
Enclosed: Yes
Contiguous: Yes
Permitted: Yes
Wet space: No
Addition: No
Conversion: No

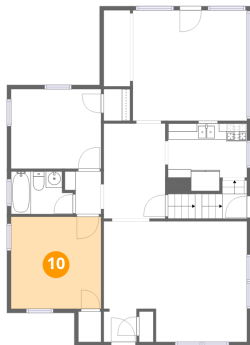
9 Floor 2 - Bath



Dimensions: 7'7" x 5'2"
Area: 36 sq. ft
Counted as living area: Yes

Heated: Yes
Finished: Yes
Enclosed: Yes
Contiguous: Yes
Permitted: Yes
Wet space: Yes
Addition: No
Conversion: No

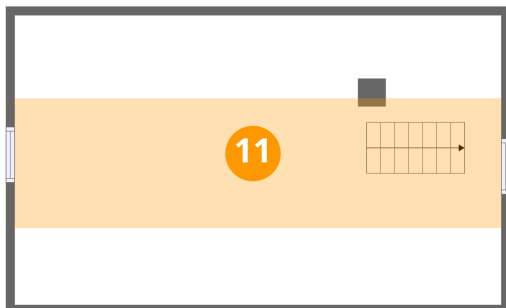
10 Floor 2 - Primary Bedroom



Dimensions: 11'0" x 11'3"
Area: 123 sq. ft
Counted as living area: Yes

Heated: Yes
Finished: Yes
Enclosed: Yes
Contiguous: Yes
Permitted: Yes
Wet space: No
Addition: No
Conversion: No

11 Floor 3 - Attic



Dimensions: 28'10" x 17'2"
Area: 221 sq. ft
Counted as living area: No

Heated: No
Finished: No
Enclosed: Yes
Contiguous: Yes
Permitted: Yes
Wet space: No
Addition: No
Conversion: No