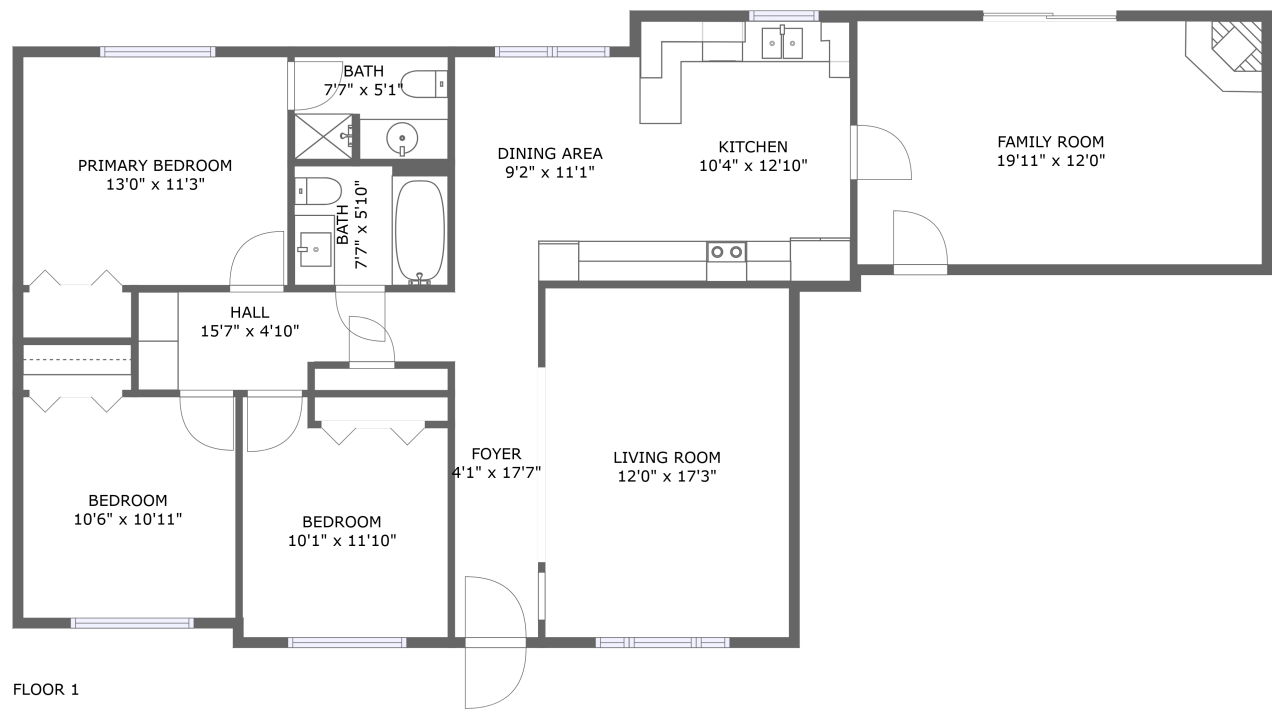




Home report


4266 Bluff Avenue Southeast, Salem, Oregon 97302, United States





Property summary


 **0** Garages


 **3** Bedrooms

 **2** Bathrooms

 **0** Half baths

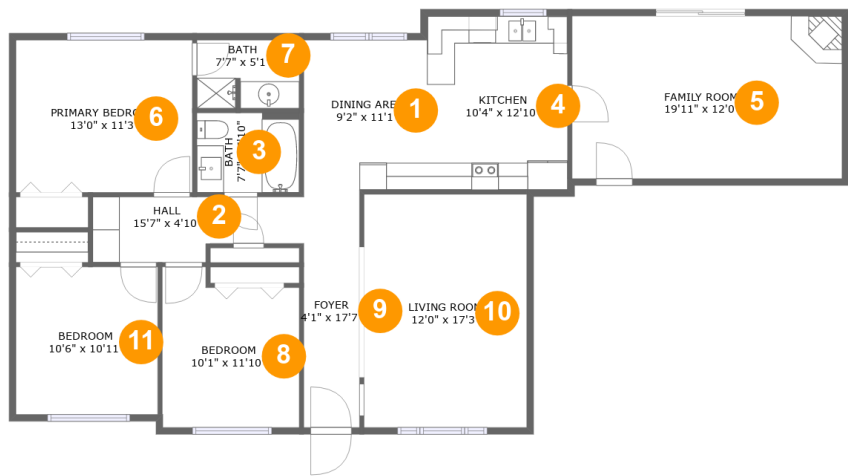
 **1** Floors

 **1,457** Gross living area sqft

 **1,457** Total sqft

Home report

4266 Bluff Avenue Southeast, Salem, Oregon 97302, United States



Room dimensions

Floor 1 Total sqft: 1457 Living area: 1457

#		Max Dimensions	sqft	Included
1	Dining Area	9'2" x 11'1"	101 sq. ft	Yes
2	Hall	15'7" x 4'10"	65 sq. ft	Yes
3	Bath	7'7" x 5'10"	44 sq. ft	Yes
4	Kitchen	10'4" x 12'10"	133 sq. ft	Yes
5	Family Room	19'11" x 12'0"	240 sq. ft	Yes
6	Primary Bedroom	13'0" x 11'3"	147 sq. ft	Yes
7	Bath	7'7" x 5'1"	37 sq. ft	Yes
8	Bedroom	10'1" x 11'10"	109 sq. ft	Yes
9	Foyer	4'1" x 17'7"	72 sq. ft	Yes
10	Living Room	12'0" x 17'3"	208 sq. ft	Yes
11	Bedroom	10'6" x 10'11"	114 sq. ft	Yes

4266 Bluff Avenue Southeast, Salem, Oregon 97302, United States

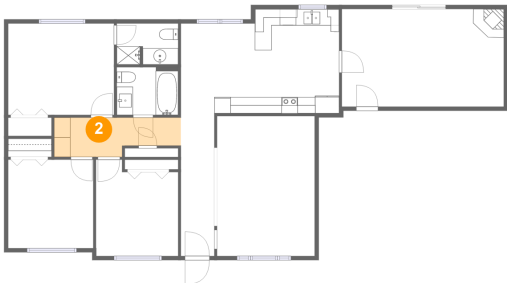
1 Floor 1 - Dining Area



Max Dimensions: 9'2" x 11'1"
Calculated Area: 101 sq. ft
Included: Yes

Heated: Yes
Finished: Yes
Enclosed: Yes
Contiguous: Yes
Permitted: Yes
Wet space: No
Addition: No
Conversion: No

2 Floor 1 - Hall



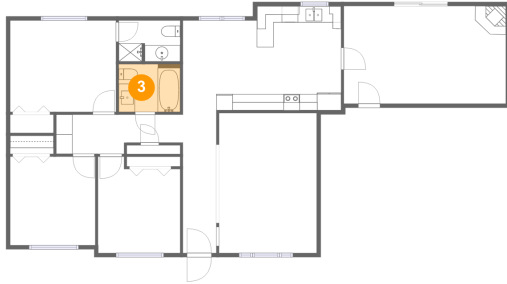
Max Dimensions: 15'7" x 4'10"
Calculated Area: 65 sq. ft
Included: Yes

Heated: Yes
Finished: Yes
Enclosed: Yes
Contiguous: Yes
Permitted: Yes
Wet space: No
Addition: No
Conversion: No

Home report

4266 Bluff Avenue Southeast, Salem, Oregon 97302, United States

3 Floor 1 - Bath



Max Dimensions: 7'7" x 5'10"
Calculated Area: 44 sq. ft
Included: Yes

Heated: Yes
Finished: Yes
Enclosed: Yes
Contiguous: Yes
Permitted: Yes
Wet space: Yes
Addition: No
Conversion: No

4 Floor 1 - Kitchen



Max Dimensions: 10'4" x 12'10"
Calculated Area: 133 sq. ft
Included: Yes

Heated: Yes
Finished: Yes
Enclosed: Yes
Contiguous: Yes
Permitted: Yes
Wet space: No
Addition: No
Conversion: No

5 Floor 1 - Family Room



Max Dimensions: 19'11" x 12'0"
Calculated Area: 240 sq. ft
Included: Yes

Heated: Yes
Finished: Yes
Enclosed: Yes
Contiguous: Yes
Permitted: Yes
Wet space: No
Addition: No
Conversion: No

6 Floor 1 - Primary Bedroom



Max Dimensions: 13'0" x 11'3"
Calculated Area: 147 sq. ft
Included: Yes

Heated: Yes
Finished: Yes
Enclosed: Yes
Contiguous: Yes
Permitted: Yes
Wet space: No
Addition: No
Conversion: No

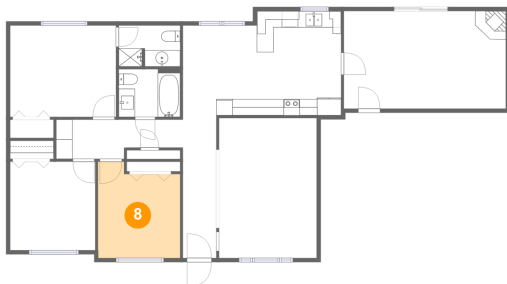
7 Floor 1 - Bath



Max Dimensions: 7'7" x 5'1"
Calculated Area: 37 sq. ft
Included: Yes

Heated: Yes
Finished: Yes
Enclosed: Yes
Contiguous: Yes
Permitted: Yes
Wet space: Yes
Addition: No
Conversion: No

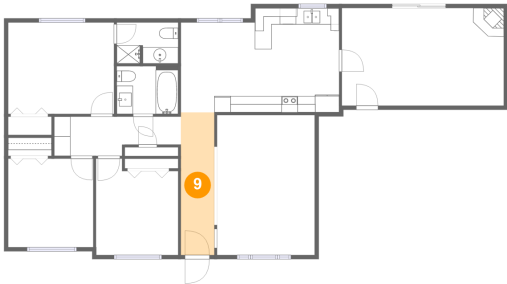
8 Floor 1 - Bedroom



Max Dimensions: 10'1" x 11'10"
Calculated Area: 109 sq. ft
Included: Yes

Heated: Yes
Finished: Yes
Enclosed: Yes
Contiguous: Yes
Permitted: Yes
Wet space: No
Addition: No
Conversion: No

9 Floor 1 - Foyer



Max Dimensions: 4'1" x 17'7"
Calculated Area: 72 sq. ft
Included: Yes

Heated: Yes
Finished: Yes
Enclosed: Yes
Contiguous: Yes
Permitted: Yes
Wet space: No
Addition: No
Conversion: No

10 Floor 1 - Living Room



Max Dimensions: 12'0" x 17'3"
Calculated Area: 208 sq. ft
Included: Yes

Heated: Yes
Finished: Yes
Enclosed: Yes
Contiguous: Yes
Permitted: Yes
Wet space: No
Addition: No
Conversion: No

11 Floor 1 - Bedroom



Max Dimensions: 10'6" x 10'11"
Calculated Area: 114 sq. ft
Included: Yes

Heated: Yes
Finished: Yes
Enclosed: Yes
Contiguous: Yes
Permitted: Yes
Wet space: No
Addition: No
Conversion: No