



Basement
18'0" x 26'1"

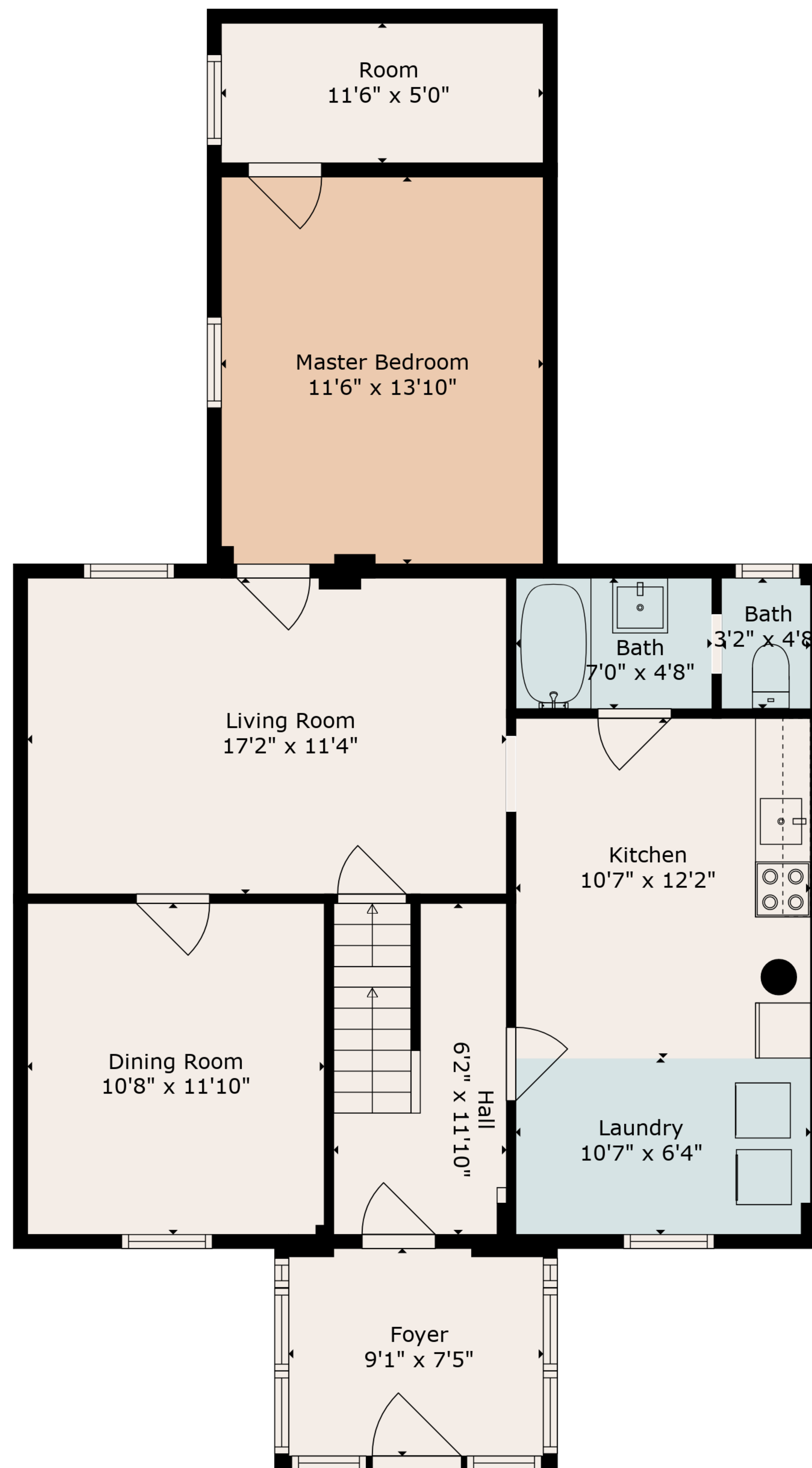
Basement
18'4" x 21'3"

TOTAL: 1852 sq. ft

BELOW GROUND: 0 sq. ft, FLOOR 2: 962 sq. ft, FLOOR 3: 890 sq. ft
EXCLUDED AREAS: BASEMENT: 828 sq. ft

All Images And Dimensions Herein Are Approximate And For Illustrative Purposes Only



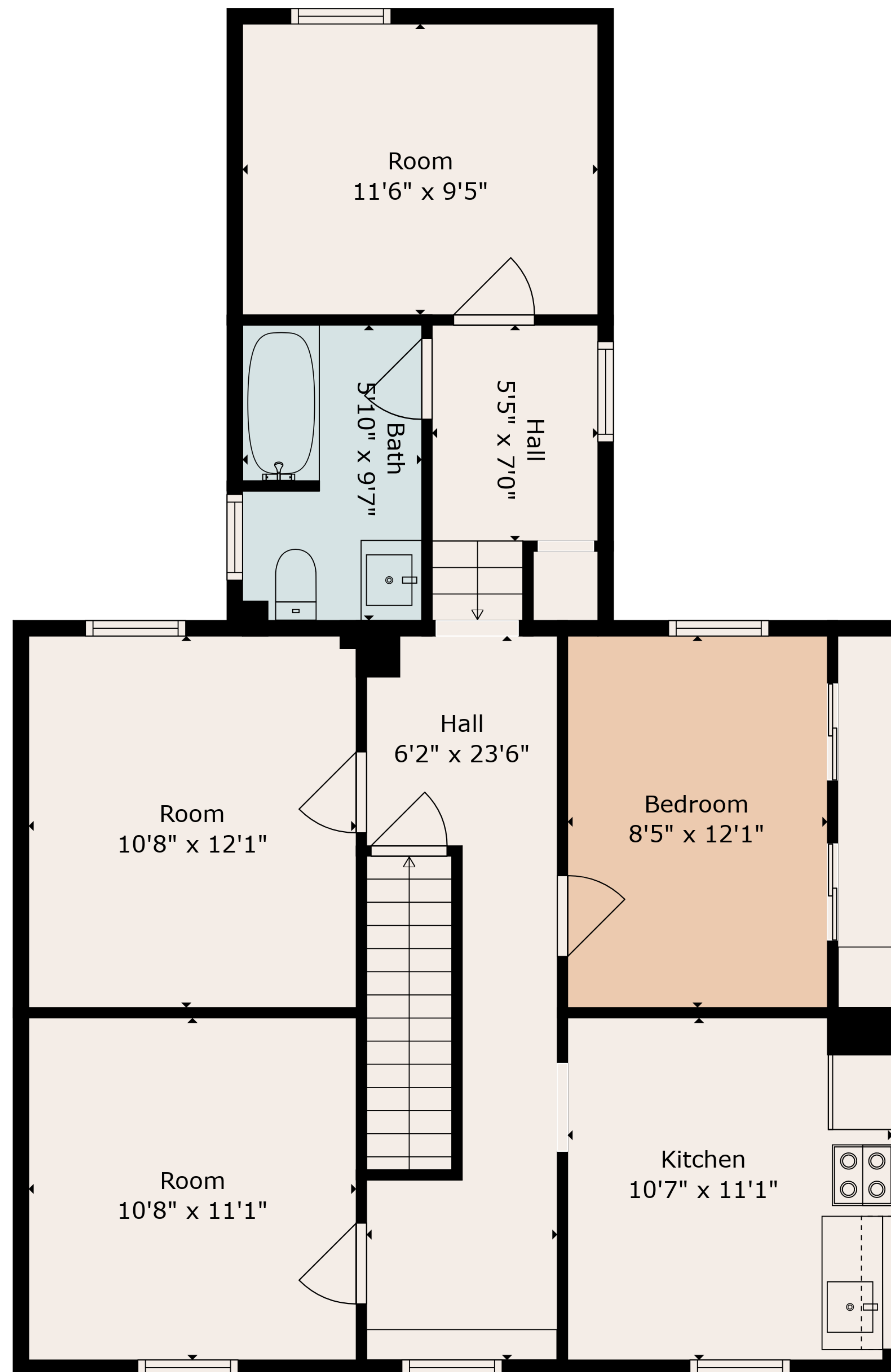


TOTAL: 1852 sq. ft

BELOW GROUND: 0 sq. ft, FLOOR 2: 962 sq. ft, FLOOR 3: 890 sq. ft
 EXCLUDED AREAS: BASEMENT: 828 sq. ft

All Images And Dimensions Herein Are Approximate And For Illustrative Purposes Only



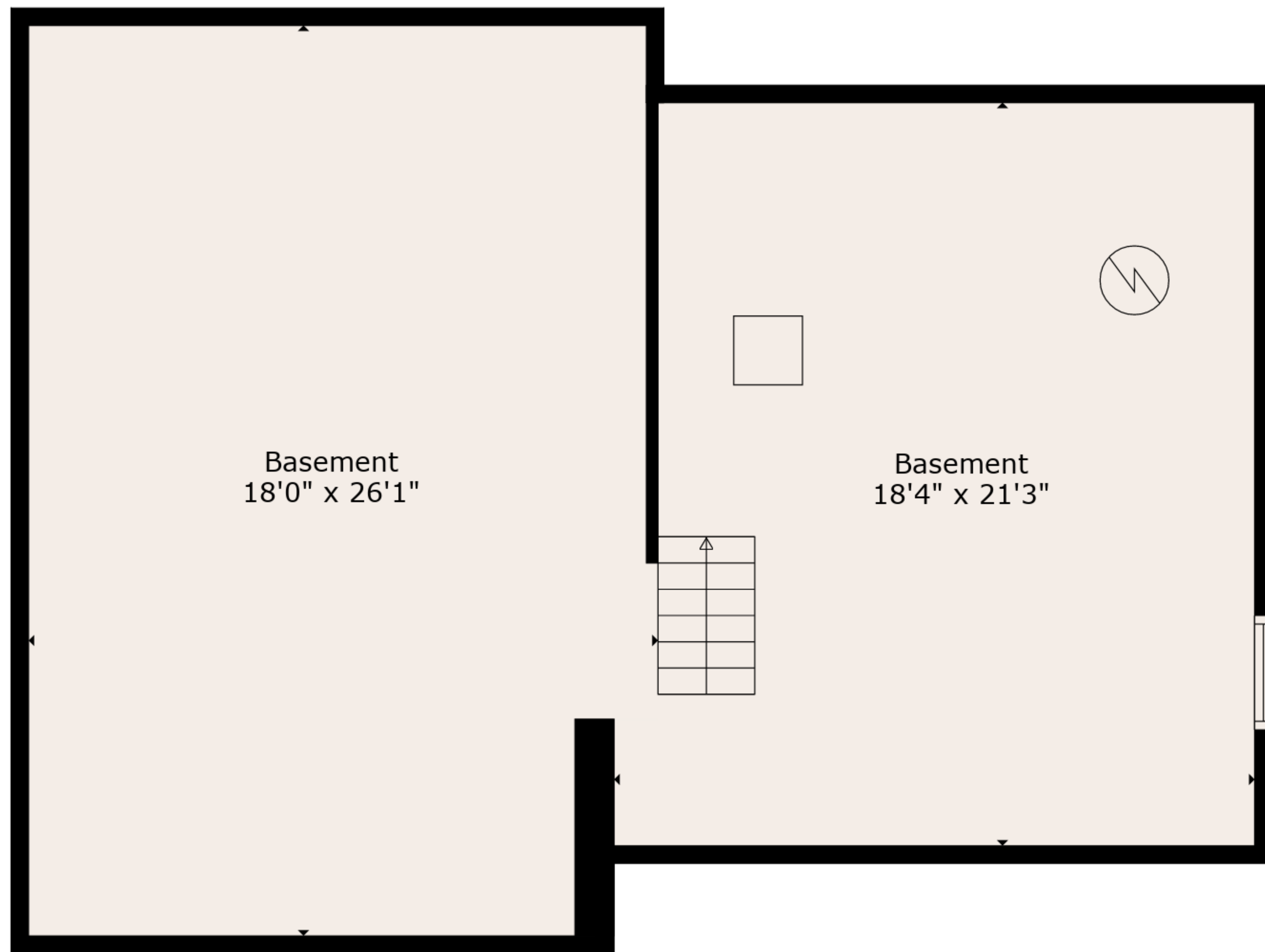


TOTAL: 1852 sq. ft

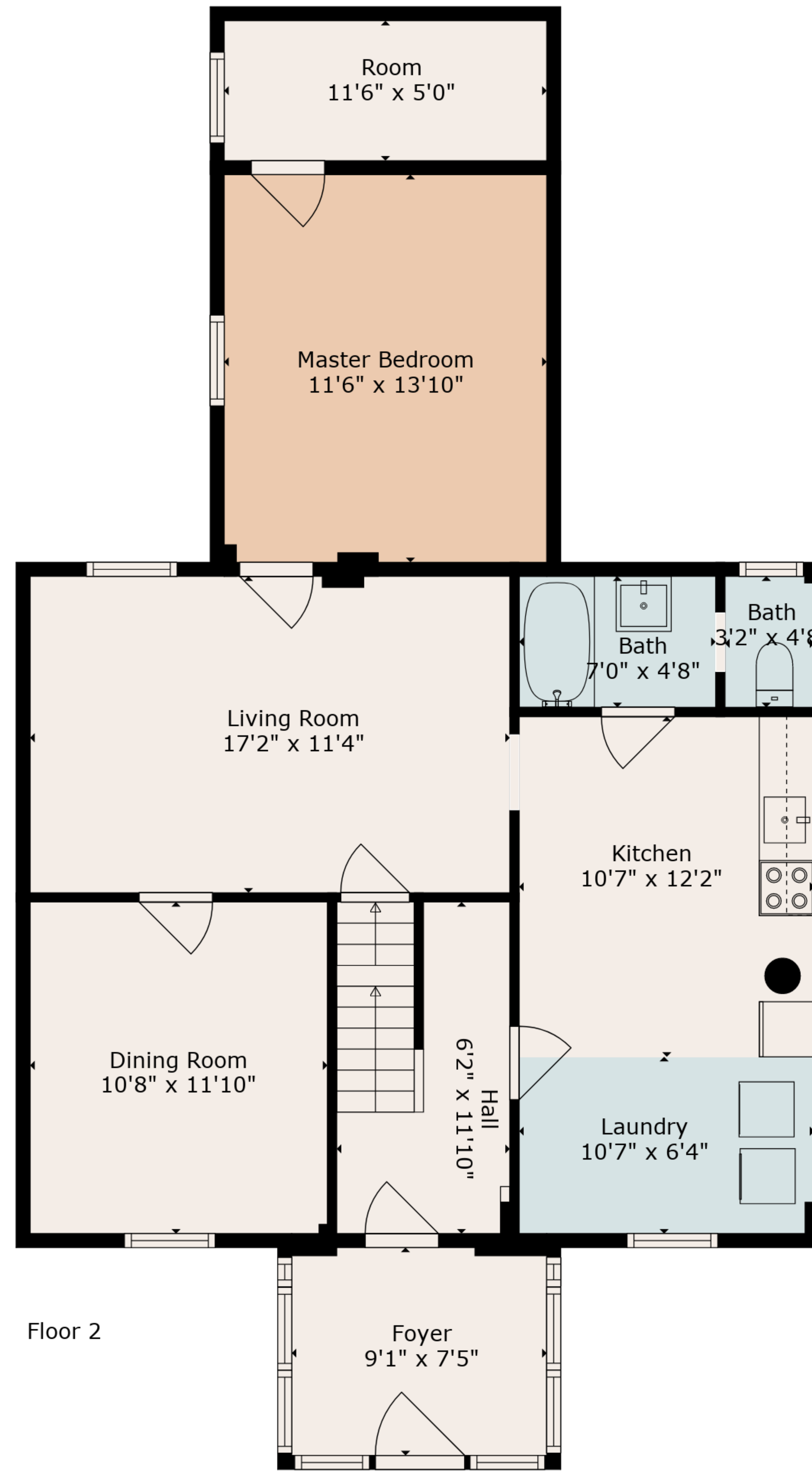
BELOW GROUND: 0 sq. ft, FLOOR 2: 962 sq. ft, FLOOR 3: 890 sq. ft
 EXCLUDED AREAS: BASEMENT: 828 sq. ft

All Images And Dimensions Herein Are Approximate And For Illustrative Purposes Only

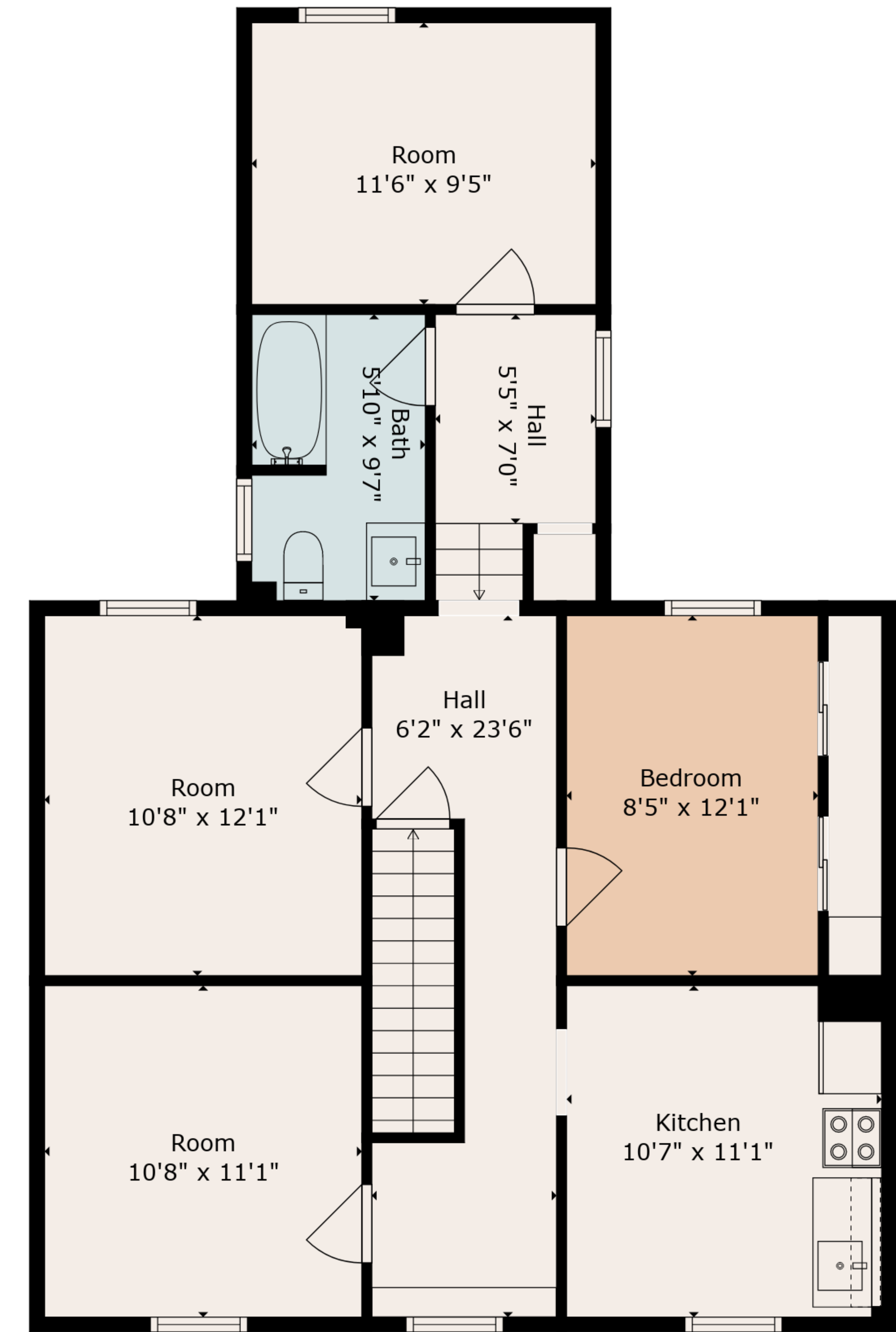




Floor 1



Floor 2



Floor 3

TOTAL: 1852 sq. ft
 BELOW GROUND: 0 sq. ft, FLOOR 2: 962 sq. ft, FLOOR 3: 890 sq. ft
 EXCLUDED AREAS: BASEMENT: 828 sq. ft

All Images And Dimensions Herein Are Approximate And For Illustrative Purposes Only

