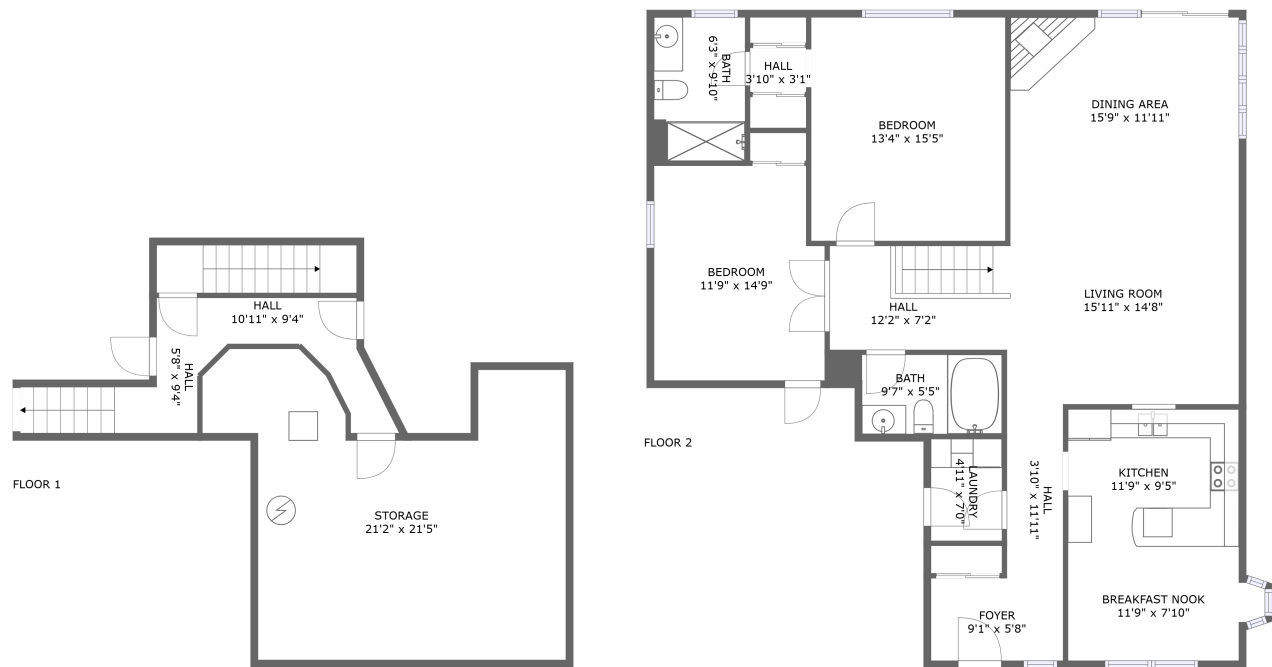


Home report

6551 Richer Drive, Orléans Village - Chateauneuf, Convent Glen,
Orléans, Ontario, Canada, K1C 4M7, Upstairs




Total Area: 1598 sq. ft


Below Ground: 168 sq. ft, Floor 2: 1430 sq. ft

Excluded: Storage 402 sq. ft, Embedded window 6 sq. ft, Walls: 154 sq. ft

Property summary

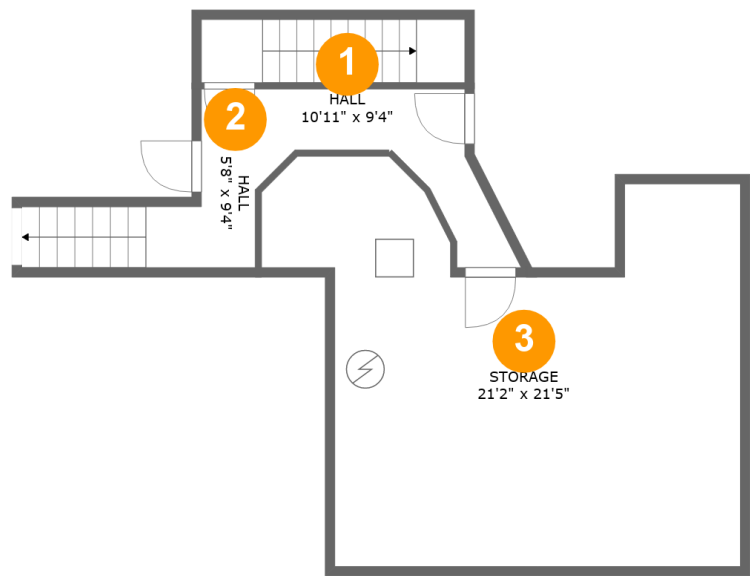
 2 Floors

 2 Bedrooms

 2 Bathrooms

Home report

6551 Richer Drive, Orléans Village - Chateauneuf, Convent Glen,
Orléans, Ontario, Canada, K1C 4M7, Upstairs



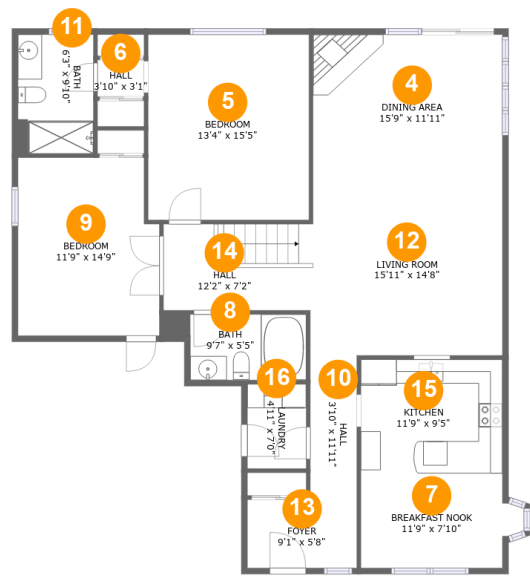
Room dimensions

Floor 1 Below ground Total:168sqft Excluded: 402sqft

#		Max Dimensions	sqft	Included
1	Hall	10'11" x 9'4"	55 sq. ft	Yes
2	Hall	5'8" x 9'4"	56 sq. ft	Yes
3	Storage	21'2" x 21'5"	401 sq. ft	No

Home report

6551 Richer Drive, Orléans Village - Chateauneuf, Convent Glen,
Orléans, Ontario, Canada, K1C 4M7, Upstairs



Room dimensions

Floor 2 Total:1430sqft Excluded: 6sqft

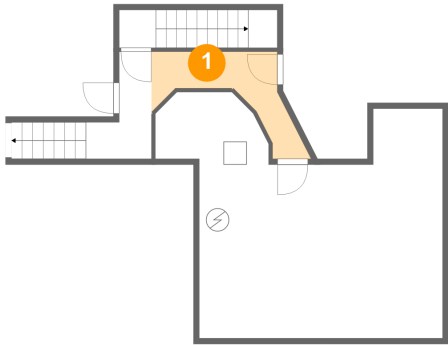
#		Max Dimensions	sqft	Included
4	Dining Area	15'9" x 11'11"	187 sq. ft	Yes
5	Bedroom	13'4" x 15'5"	205 sq. ft	Yes
6	Hall	3'10" x 3'1"	12 sq. ft	Yes
7	Breakfast Nook	11'9" x 7'10"	92 sq. ft	Yes
8	Bath	9'7" x 5'5"	56 sq. ft	Yes
9	Bedroom	11'9" x 14'9"	166 sq. ft	Yes
10	Hall	3'10" x 11'11"	46 sq. ft	Yes
11	Bath	6'3" x 9'10"	62 sq. ft	Yes
12	Living Room	15'11" x 14'8"	233 sq. ft	Yes
13	Foyer	9'1" x 5'8"	52 sq. ft	Yes
14	Hall	12'2" x 7'2"	87 sq. ft	Yes

Home report

6551 Richer Drive, Orléans Village - Chateauneuf, Convent Glen,
Orléans, Ontario, Canada, K1C 4M7, Upstairs

#		Max Dimensions	sqft	Included
15	Kitchen	11'9" x 9'5"	112 sq. ft	Yes
16	Laundry	4'11" x 7'0"	34 sq. ft	Yes

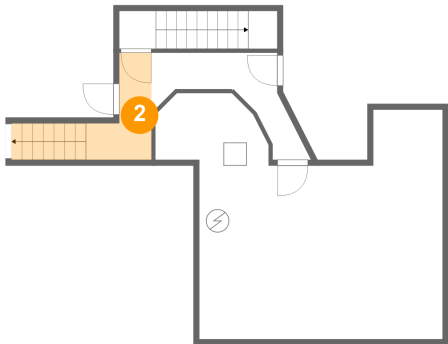
1 Floor 1 - Hall



Max Dimensions: 10'11" x 9'4"
Calculated Area: 55 sq. ft
Included: No

Heated: Yes
Finished: Yes
Enclosed: Yes
Contiguous: Yes
Permitted: Yes
Wet space: No
Addition: No
Conversion: No

2 Floor 1 - Hall

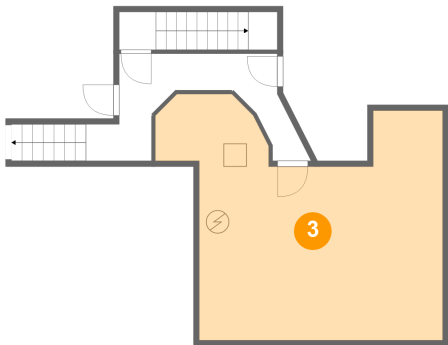


Max Dimensions: 5'8" x 9'4"
Calculated Area: 56 sq. ft
Included: No

Heated: Yes
Finished: Yes
Enclosed: Yes
Contiguous: Yes
Permitted: Yes
Wet space: No
Addition: No
Conversion: No

6551 Richer Drive, Orléans Village - Chateauneuf, Convent Glen,
Orléans, Ontario, Canada, K1C 4M7, Upstairs

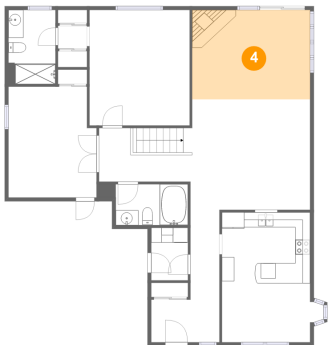
3 Floor 1 - Storage



Max Dimensions: 21'2" x 21'5"
Calculated Area: 401 sq. ft
Included: No

Heated: No
Finished: No
Enclosed: No
Contiguous: Yes
Permitted: Yes
Wet space: No
Addition: No
Conversion: No

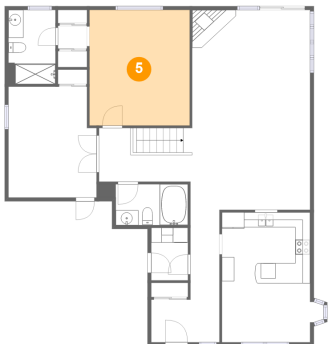
4 Floor 2 - Dining Area



Max Dimensions: 15'9" x 11'11"
Calculated Area: 187 sq. ft
Included: Yes

Heated: Yes
Finished: Yes
Enclosed: Yes
Contiguous: Yes
Permitted: Yes
Wet space: No
Addition: No
Conversion: No

5 Floor 2 - Bedroom

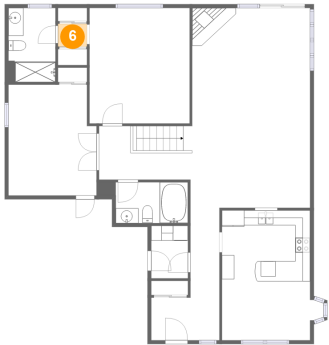


Max Dimensions: 13'4" x 15'5"
Calculated Area: 205 sq. ft
Included: Yes

Heated: Yes
Finished: Yes
Enclosed: Yes
Contiguous: Yes
Permitted: Yes
Wet space: No
Addition: No
Conversion: No

6551 Richer Drive, Orléans Village - Chateauneuf, Convent Glen,
Orléans, Ontario, Canada, K1C 4M7, Upstairs

6 Floor 2 - Hall



Max Dimensions: 3'10" x 3'1"
Calculated Area: 12 sq. ft
Included: Yes

Heated: Yes
Finished: Yes
Enclosed: Yes
Contiguous: Yes
Permitted: Yes
Wet space: No
Addition: No
Conversion: No

7 Floor 2 - Breakfast Nook



Max Dimensions: 11'9" x 7'10"
Calculated Area: 92 sq. ft
Included: Yes

Heated: Yes
Finished: Yes
Enclosed: Yes
Contiguous: Yes
Permitted: Yes
Wet space: No
Addition: No
Conversion: No

8 Floor 2 - Bath

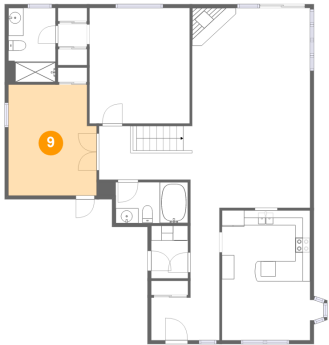


Max Dimensions: 9'7" x 5'5"
Calculated Area: 56 sq. ft
Included: Yes

Heated: Yes
Finished: Yes
Enclosed: Yes
Contiguous: Yes
Permitted: Yes
Wet space: Yes
Addition: No
Conversion: No

6551 Richer Drive, Orléans Village - Chateauneuf, Convent Glen,
Orléans, Ontario, Canada, K1C 4M7, Upstairs

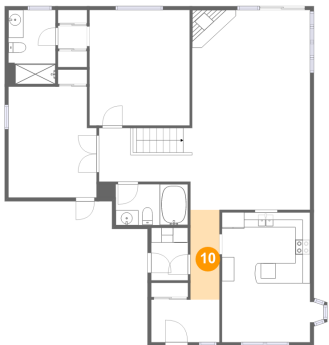
9 Floor 2 - Bedroom



Max Dimensions: 11'9" x 14'9"
Calculated Area: 166 sq. ft
Included: Yes

Heated: Yes
Finished: Yes
Enclosed: Yes
Contiguous: Yes
Permitted: Yes
Wet space: No
Addition: No
Conversion: No

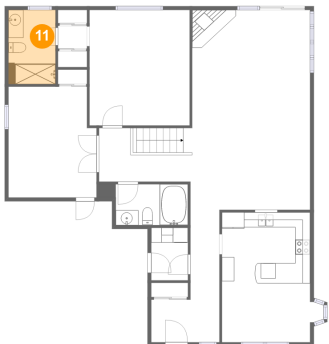
10 Floor 2 - Hall



Max Dimensions: 3'10" x 11'11"
Calculated Area: 46 sq. ft
Included: Yes

Heated: Yes
Finished: Yes
Enclosed: Yes
Contiguous: Yes
Permitted: Yes
Wet space: No
Addition: No
Conversion: No

11 Floor 2 - Bath

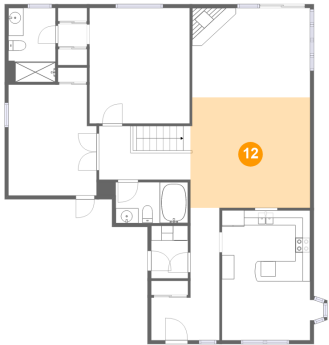


Max Dimensions: 6'3" x 9'10"
Calculated Area: 62 sq. ft
Included: Yes

Heated: Yes
Finished: Yes
Enclosed: Yes
Contiguous: Yes
Permitted: Yes
Wet space: Yes
Addition: No
Conversion: No

6551 Richer Drive, Orléans Village - Chateauneuf, Convent Glen,
Orléans, Ontario, Canada, K1C 4M7, Upstairs

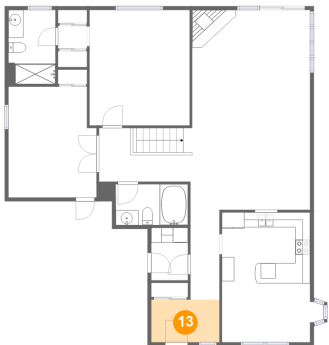
12 Floor 2 - Living Room



Max Dimensions: 15'11" x 14'8"
Calculated Area: 233 sq. ft
Included: Yes

Heated: Yes
Finished: Yes
Enclosed: Yes
Contiguous: Yes
Permitted: Yes
Wet space: No
Addition: No
Conversion: No

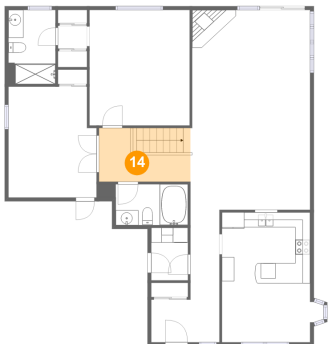
13 Floor 2 - Foyer



Max Dimensions: 9'1" x 5'8"
Calculated Area: 52 sq. ft
Included: Yes

Heated: Yes
Finished: Yes
Enclosed: Yes
Contiguous: Yes
Permitted: Yes
Wet space: No
Addition: No
Conversion: No

14 Floor 2 - Hall

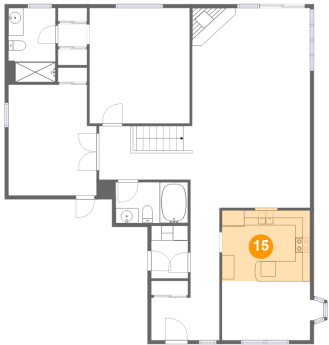


Max Dimensions: 12'2" x 7'2"
Calculated Area: 87 sq. ft
Included: Yes

Heated: Yes
Finished: Yes
Enclosed: Yes
Contiguous: Yes
Permitted: Yes
Wet space: No
Addition: No
Conversion: No

6551 Richer Drive, Orléans Village - Chateauneuf, Convent Glen,
Orléans, Ontario, Canada, K1C 4M7, Upstairs

15 Floor 2 - Kitchen



Max Dimensions: 11'9" x 9'5"
Calculated Area: 112 sq. ft
Included: Yes

Heated: Yes
Finished: Yes
Enclosed: Yes
Contiguous: Yes
Permitted: Yes
Wet space: No
Addition: No
Conversion: No

16 Floor 2 - Laundry



Max Dimensions: 4'11" x 7'0"
Calculated Area: 34 sq. ft
Included: Yes

Heated: Yes
Finished: Yes
Enclosed: Yes
Contiguous: Yes
Permitted: Yes
Wet space: No
Addition: No
Conversion: No