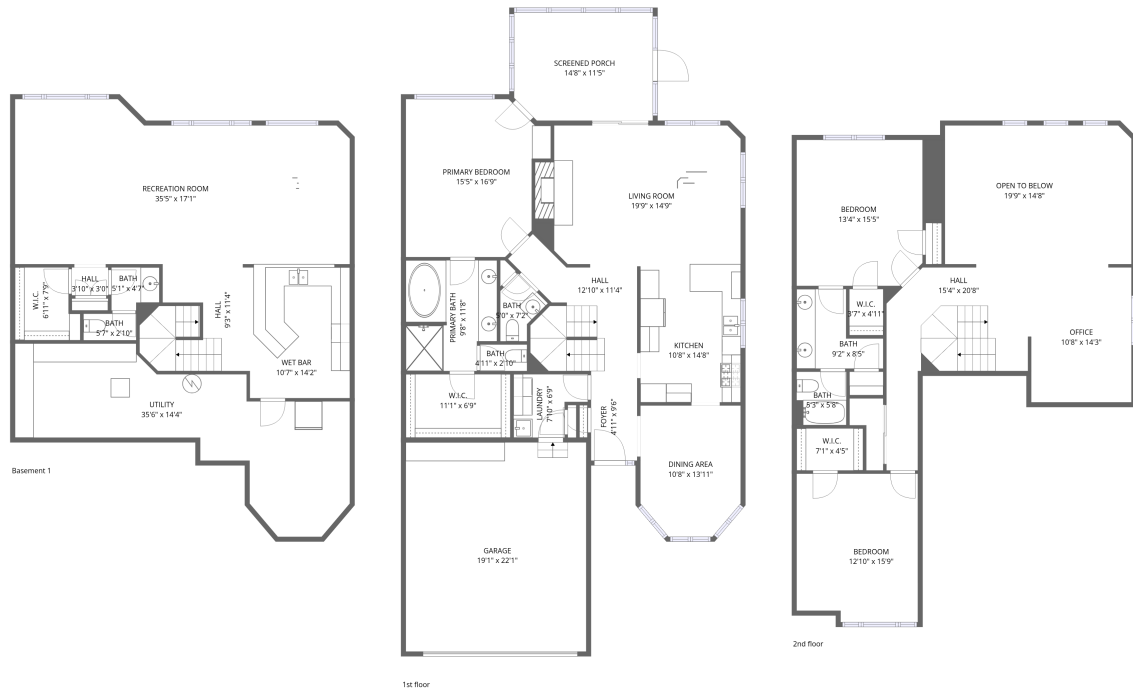


# Home data report

## 32955 N Stone Manor Dr, Grayslake, IL, US



**Total Area: 3258 sq. ft**

Basement 1: 956 sq. ft, 1st Floor: 1321 sq. ft, 2nd Floor: 981 sq. ft

Excluded: Utility 365 sq. ft, Garage 424 sq. ft, Screened porch 166 sq. ft, Open to below 290 sq. ft, Walls: 251 sq. ft

### Property summary

 **3** Floors

 **3** Bedrooms

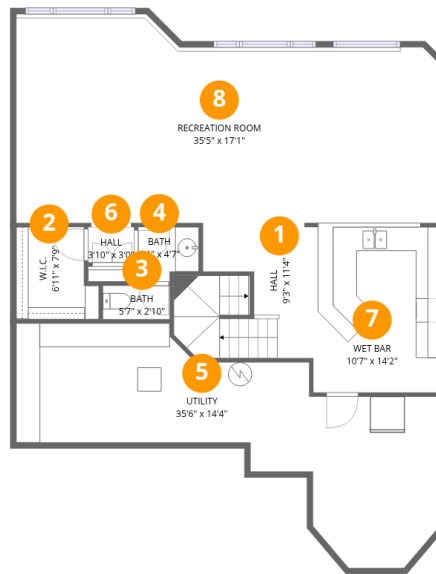
 **2** Bathrooms

Home data report

**32955 N Stone Manor Dr, Grayslake, IL, US**

 **2**  
Half baths

 **1**  
Garages



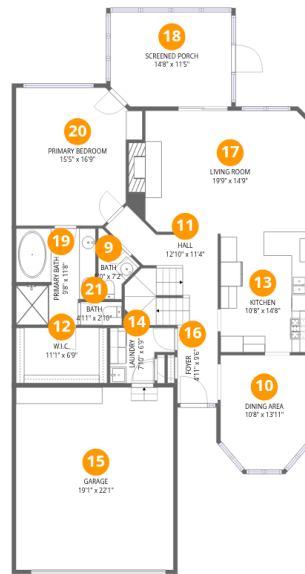
## Room dimensions

Floor 1 Below grade

Total: 956 sqft

Excluded: 365 sqft

#		Dimensions	sqft	Counted as living area
1	Hall	9'3" x 11'4"	105 sq. ft	Yes
2	W.I.C.	6'11" x 7'9"	54 sq. ft	Yes
3	Bath	5'7" x 2'10"	16 sq. ft	Yes
4	Bath	5'1" x 4'7"	23 sq. ft	Yes
5	Utility	35'6" x 14'4"	508 sq. ft	No
6	Hall	3'10" x 3'0"	11 sq. ft	Yes
7	Wet Bar	10'7" x 14'2"	150 sq. ft	Yes
8	Recreation Room	35'5" x 17'1"	606 sq. ft	Yes



## Room dimensions

Floor 2

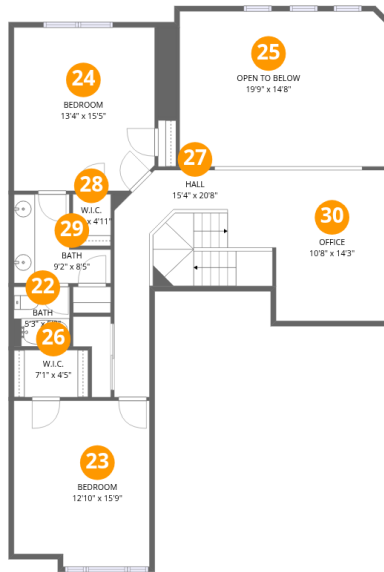
Total:1321sqft Excluded: 590sqft

#		Dimensions	sqft	Counted as living area
9	Bath	5'0" x 7'2"	36 sq. ft	Yes
10	Dining Area	10'8" x 13'11"	148 sq. ft	Yes
11	Hall	12'10" x 11'4"	145 sq. ft	Yes
12	W.I.C.	11'1" x 6'9"	74 sq. ft	Yes
13	Kitchen	10'8" x 14'8"	155 sq. ft	Yes
14	Laundry	7'10" x 6'9"	53 sq. ft	Yes
15	Garage	19'1" x 22'1"	423 sq. ft	No
16	Foyer	4'11" x 9'6"	47 sq. ft	Yes
17	Living Room	19'9" x 14'9"	291 sq. ft	Yes
18	Screened Porch	14'8" x 11'5"	168 sq. ft	No
19	Primary Bath	9'8" x 11'8"	113 sq. ft	Yes

Home data report

**32955 N Stone Manor Dr, Grayslake, IL, US**

#		Dimensions	sqft	Counted as living area
20	Primary Bedroom	15'5" x 16'9"	257 sq. ft	Yes
21	Bath	4'11" x 2'10"	14 sq. ft	Yes



## Room dimensions

Floor 3

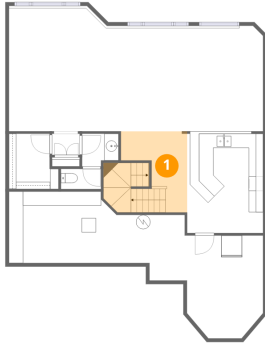
Total:981sqft

Excluded: 290sqft

#		Dimensions	sqft	Counted as living area
22	Bath	5'3" x 5'8"	30 sq. ft	Yes
23	Bedroom	12'10" x 15'9"	202 sq. ft	Yes
24	Bedroom	13'4" x 15'5"	206 sq. ft	Yes
25	Open To Below	19'9" x 14'8"	290 sq. ft	No
26	W.I.C.	7'1" x 4'5"	31 sq. ft	Yes
27	Hall	15'4" x 20'8"	317 sq. ft	Yes
28	W.I.C.	3'7" x 4'11"	18 sq. ft	Yes
29	Bath	9'2" x 8'5"	77 sq. ft	Yes
30	Office	10'8" x 14'3"	152 sq. ft	Yes

## 1 Floor 1 - Hall

---

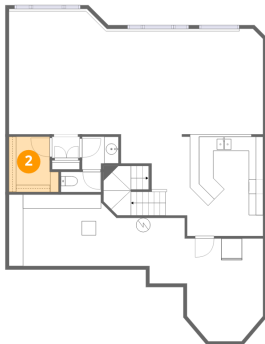


Dimensions: 9'3" x 11'4"  
Area: 105 sq. ft  
Counted as living area: Yes

Heated: Yes  
Finished: Yes  
Enclosed: Yes  
Contiguous: Yes  
Permitted: Yes  
Wet space: No  
Addition: No  
Conversion: No

## 2 Floor 1 - W.I.C.

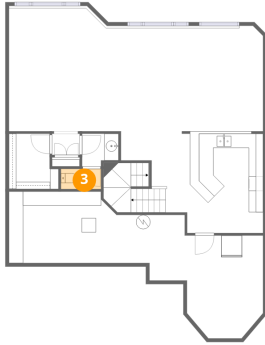
---



Dimensions: 6'11" x 7'9"  
Area: 54 sq. ft  
Counted as living area: Yes

Heated: Yes  
Finished: Yes  
Enclosed: Yes  
Contiguous: Yes  
Permitted: Yes  
Wet space: No  
Addition: No  
Conversion: No

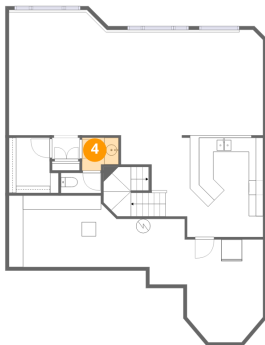
### 3 Floor 1 - Bath



Dimensions: 5'7" x 2'10"  
Area: 16 sq. ft  
Counted as living area: Yes

Heated: Yes  
Finished: Yes  
Enclosed: Yes  
Contiguous: Yes  
Permitted: Yes  
Wet space: Yes  
Addition: No  
Conversion: No

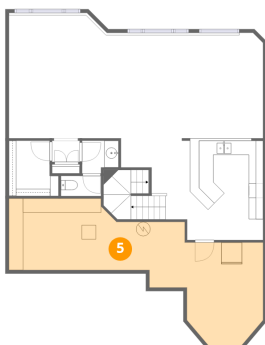
### 4 Floor 1 - Bath



Dimensions: 5'1" x 4'7"  
Area: 23 sq. ft  
Counted as living area: Yes

Heated: Yes  
Finished: Yes  
Enclosed: Yes  
Contiguous: Yes  
Permitted: Yes  
Wet space: Yes  
Addition: No  
Conversion: No

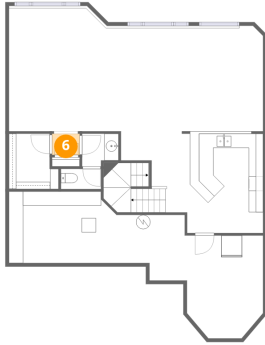
### 5 Floor 1 - Utility



Dimensions: 35'6" x 14'4"  
Area: 508 sq. ft  
Counted as living area: No

Heated: Yes  
Finished: No  
Enclosed: Yes  
Contiguous: Yes  
Permitted: Yes  
Wet space: No  
Addition: No  
Conversion: No

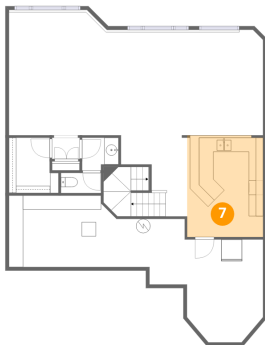
## 6 Floor 1 - Hall



Dimensions: 3'10" x 3'0"  
Area: 11 sq. ft  
Counted as living area: Yes

Heated: Yes  
Finished: Yes  
Enclosed: Yes  
Contiguous: Yes  
Permitted: Yes  
Wet space: No  
Addition: No  
Conversion: No

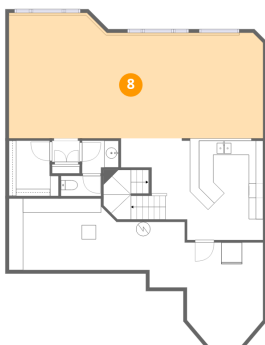
## 7 Floor 1 - Wet Bar



Dimensions: 10'7" x 14'2"  
Area: 150 sq. ft  
Counted as living area: Yes

Heated: Yes  
Finished: Yes  
Enclosed: Yes  
Contiguous: Yes  
Permitted: Yes  
Wet space: No  
Addition: No  
Conversion: No

## 8 Floor 1 - Recreation Room



Dimensions: 35'5" x 17'1"  
Area: 606 sq. ft  
Counted as living area: Yes

Heated: Yes  
Finished: Yes  
Enclosed: Yes  
Contiguous: Yes  
Permitted: Yes  
Wet space: No  
Addition: No  
Conversion: No

### 9 Floor 2 - Bath



Dimensions: 5'0" x 7'2"  
Area: 36 sq. ft  
Counted as living area: Yes

Heated: Yes  
Finished: Yes  
Enclosed: Yes  
Contiguous: Yes  
Permitted: Yes  
Wet space: Yes  
Addition: No  
Conversion: No

### 10 Floor 2 - Dining Area



Dimensions: 10'8" x 13'11"  
Area: 148 sq. ft  
Counted as living area: Yes

Heated: Yes  
Finished: Yes  
Enclosed: Yes  
Contiguous: Yes  
Permitted: Yes  
Wet space: No  
Addition: No  
Conversion: No

### 11 Floor 2 - Hall



Dimensions: 12'10" x 11'4"  
Area: 145 sq. ft  
Counted as living area: Yes

Heated: Yes  
Finished: Yes  
Enclosed: Yes  
Contiguous: Yes  
Permitted: Yes  
Wet space: No  
Addition: No  
Conversion: No

**12** Floor 2 - W.I.C.



Dimensions: 11'1" x 6'9"  
Area: 74 sq. ft  
Counted as living area: Yes

Heated: Yes  
Finished: Yes  
Enclosed: Yes  
Contiguous: Yes  
Permitted: Yes  
Wet space: No  
Addition: No  
Conversion: No

**13** Floor 2 - Kitchen



Dimensions: 10'8" x 14'8"  
Area: 155 sq. ft  
Counted as living area: Yes

Heated: Yes  
Finished: Yes  
Enclosed: Yes  
Contiguous: Yes  
Permitted: Yes  
Wet space: No  
Addition: No  
Conversion: No

**14** Floor 2 - Laundry



Dimensions: 7'10" x 6'9"  
Area: 53 sq. ft  
Counted as living area: Yes

Heated: Yes  
Finished: Yes  
Enclosed: Yes  
Contiguous: Yes  
Permitted: Yes  
Wet space: No  
Addition: No  
Conversion: No

### 15 Floor 2 - Garage



Dimensions: 19'1" x 22'1"  
Area: 423 sq. ft  
Counted as living area: No

Heated: No  
Finished: No  
Enclosed: Yes  
Contiguous: Yes  
Permitted: Yes  
Wet space: No  
Addition: No  
Conversion: No

### 16 Floor 2 - Foyer



Dimensions: 4'11" x 9'6"  
Area: 47 sq. ft  
Counted as living area: Yes

Heated: Yes  
Finished: Yes  
Enclosed: Yes  
Contiguous: Yes  
Permitted: Yes  
Wet space: No  
Addition: No  
Conversion: No

### 17 Floor 2 - Living Room



Dimensions: 19'9" x 14'9"  
Area: 291 sq. ft  
Counted as living area: Yes

Heated: Yes  
Finished: Yes  
Enclosed: Yes  
Contiguous: Yes  
Permitted: Yes  
Wet space: No  
Addition: No  
Conversion: No

### 18 Floor 2 - Screened Porch



Dimensions: 14'8" x 11'5"  
Area: 168 sq. ft  
Counted as living area: No

Heated: No  
Finished: No  
Enclosed: No  
Contiguous: Yes  
Permitted: Yes  
Wet space: No  
Addition: No  
Conversion: No

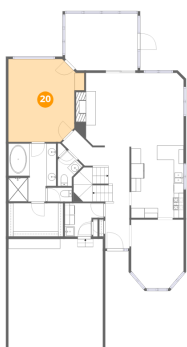
### 19 Floor 2 - Primary Bath



Dimensions: 9'8" x 11'8"  
Area: 113 sq. ft  
Counted as living area: Yes

Heated: Yes  
Finished: Yes  
Enclosed: Yes  
Contiguous: Yes  
Permitted: Yes  
Wet space: Yes  
Addition: No  
Conversion: No

### 20 Floor 2 - Primary Bedroom



Dimensions: 15'5" x 16'9"  
Area: 257 sq. ft  
Counted as living area: Yes

Heated: Yes  
Finished: Yes  
Enclosed: Yes  
Contiguous: Yes  
Permitted: Yes  
Wet space: No  
Addition: No  
Conversion: No

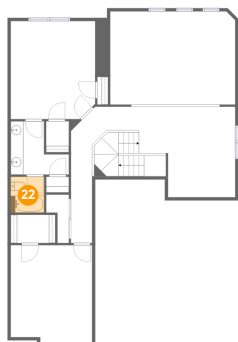
### 21 Floor 2 - Bath



Dimensions: 4'11" x 2'10"  
Area: 14 sq. ft  
Counted as living area: Yes

Heated: Yes  
Finished: Yes  
Enclosed: Yes  
Contiguous: Yes  
Permitted: Yes  
Wet space: Yes  
Addition: No  
Conversion: No

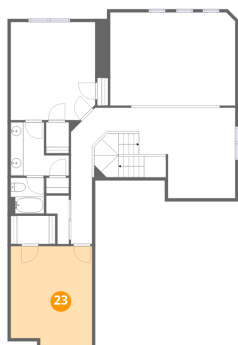
### 22 Floor 3 - Bath



Dimensions: 5'3" x 5'8"  
Area: 30 sq. ft  
Counted as living area: Yes

Heated: Yes  
Finished: Yes  
Enclosed: Yes  
Contiguous: Yes  
Permitted: Yes  
Wet space: Yes  
Addition: No  
Conversion: No

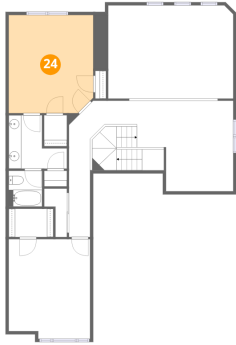
### 23 Floor 3 - Bedroom



Dimensions: 12'10" x 15'9"  
Area: 202 sq. ft  
Counted as living area: Yes

Heated: Yes  
Finished: Yes  
Enclosed: Yes  
Contiguous: Yes  
Permitted: Yes  
Wet space: No  
Addition: No  
Conversion: No

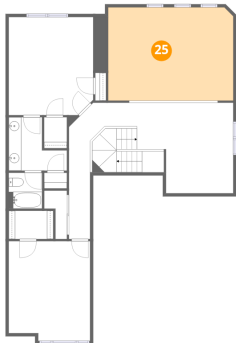
**24** Floor 3 - Bedroom



Dimensions: 13'4" x 15'5"  
Area: 206 sq. ft  
Counted as living area: Yes

Heated: Yes  
Finished: Yes  
Enclosed: Yes  
Contiguous: Yes  
Permitted: Yes  
Wet space: No  
Addition: No  
Conversion: No

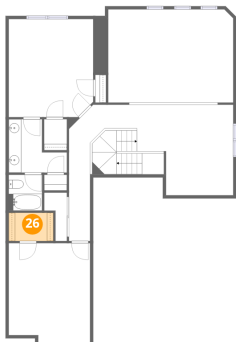
**25** Floor 3 - Open To Below



Dimensions: 19'9" x 14'8"  
Area: 290 sq. ft  
Counted as living area: No

Heated: No  
Finished: No  
Enclosed: No  
Contiguous: Yes  
Permitted: No  
Wet space: No  
Addition: No  
Conversion: No

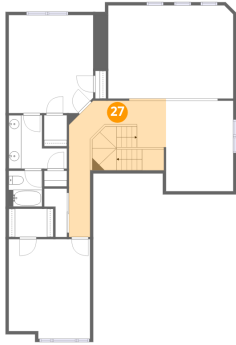
**26** Floor 3 - W.I.C.



Dimensions: 7'1" x 4'5"  
Area: 31 sq. ft  
Counted as living area: Yes

Heated: Yes  
Finished: Yes  
Enclosed: Yes  
Contiguous: Yes  
Permitted: Yes  
Wet space: No  
Addition: No  
Conversion: No

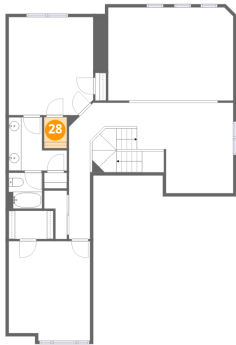
**27** Floor 3 - Hall



Dimensions: 15'4" x 20'8"  
Area: 317 sq. ft  
Counted as living area: Yes

Heated: Yes  
Finished: Yes  
Enclosed: Yes  
Contiguous: Yes  
Permitted: Yes  
Wet space: No  
Addition: No  
Conversion: No

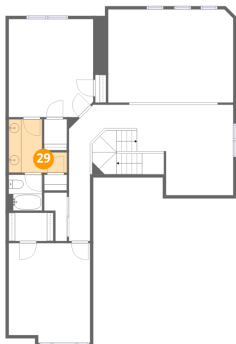
**28** Floor 3 - W.I.C.



Dimensions: 3'7" x 4'11"  
Area: 18 sq. ft  
Counted as living area: Yes

Heated: Yes  
Finished: Yes  
Enclosed: Yes  
Contiguous: Yes  
Permitted: Yes  
Wet space: No  
Addition: No  
Conversion: No

**29** Floor 3 - Bath

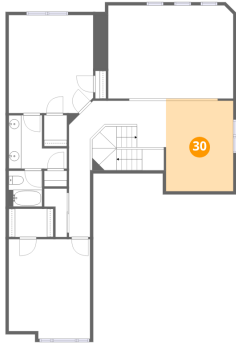


Dimensions: 9'2" x 8'5"  
Area: 77 sq. ft  
Counted as living area: Yes

Heated: Yes  
Finished: Yes  
Enclosed: Yes  
Contiguous: Yes  
Permitted: Yes  
Wet space: Yes  
Addition: No  
Conversion: No

**30** Floor 3 - Office

---



Dimensions: 10'8" x 14'3"  
Area: 152 sq. ft  
Counted as living area: Yes

Heated: Yes  
Finished: Yes  
Enclosed: Yes  
Contiguous: Yes  
Permitted: Yes  
Wet space: No  
Addition: No  
Conversion: No