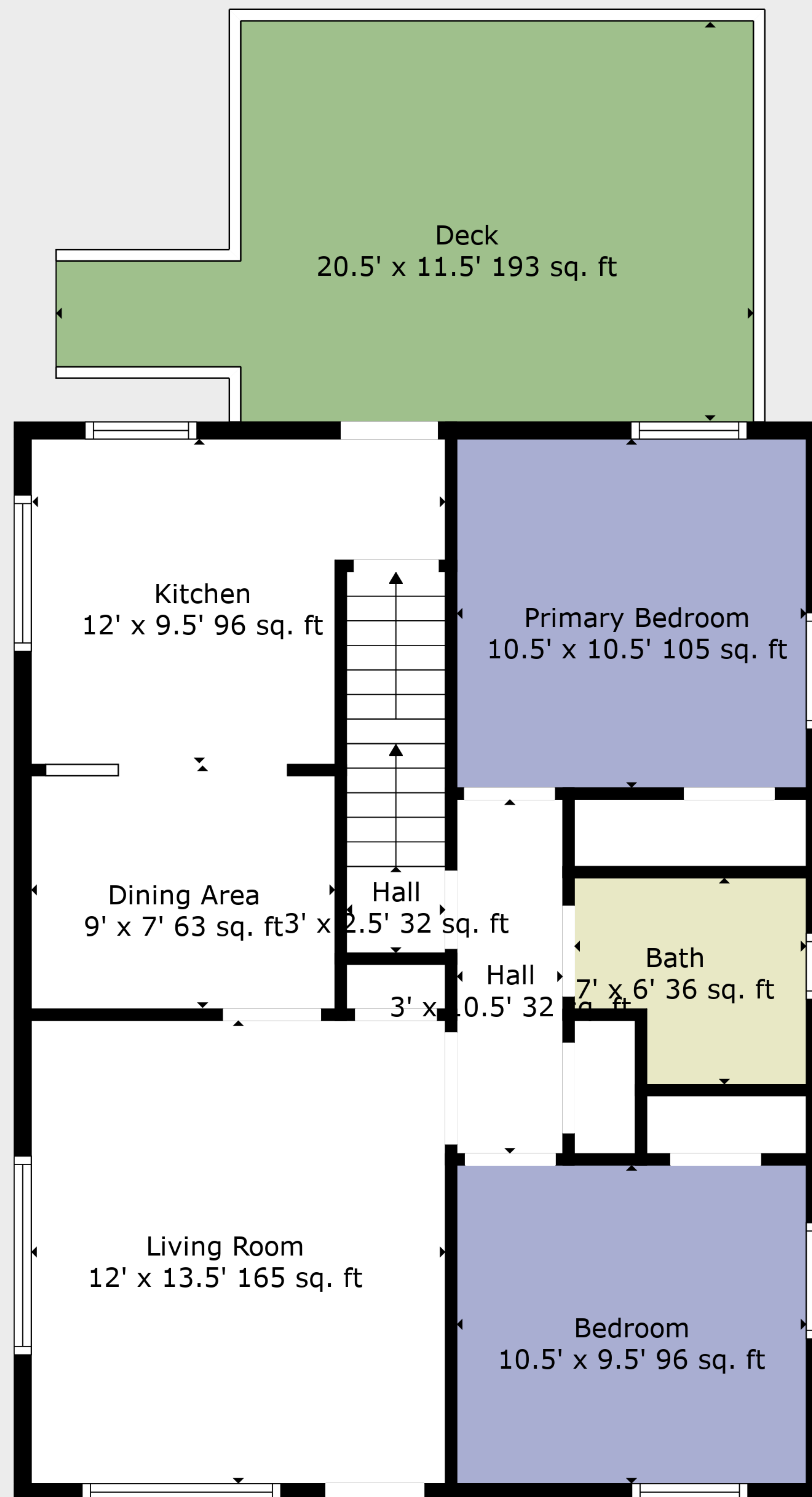


Basement  
22.5' x 30.5' 690 sq. ft

**TOTAL: 1062 sq. ft**

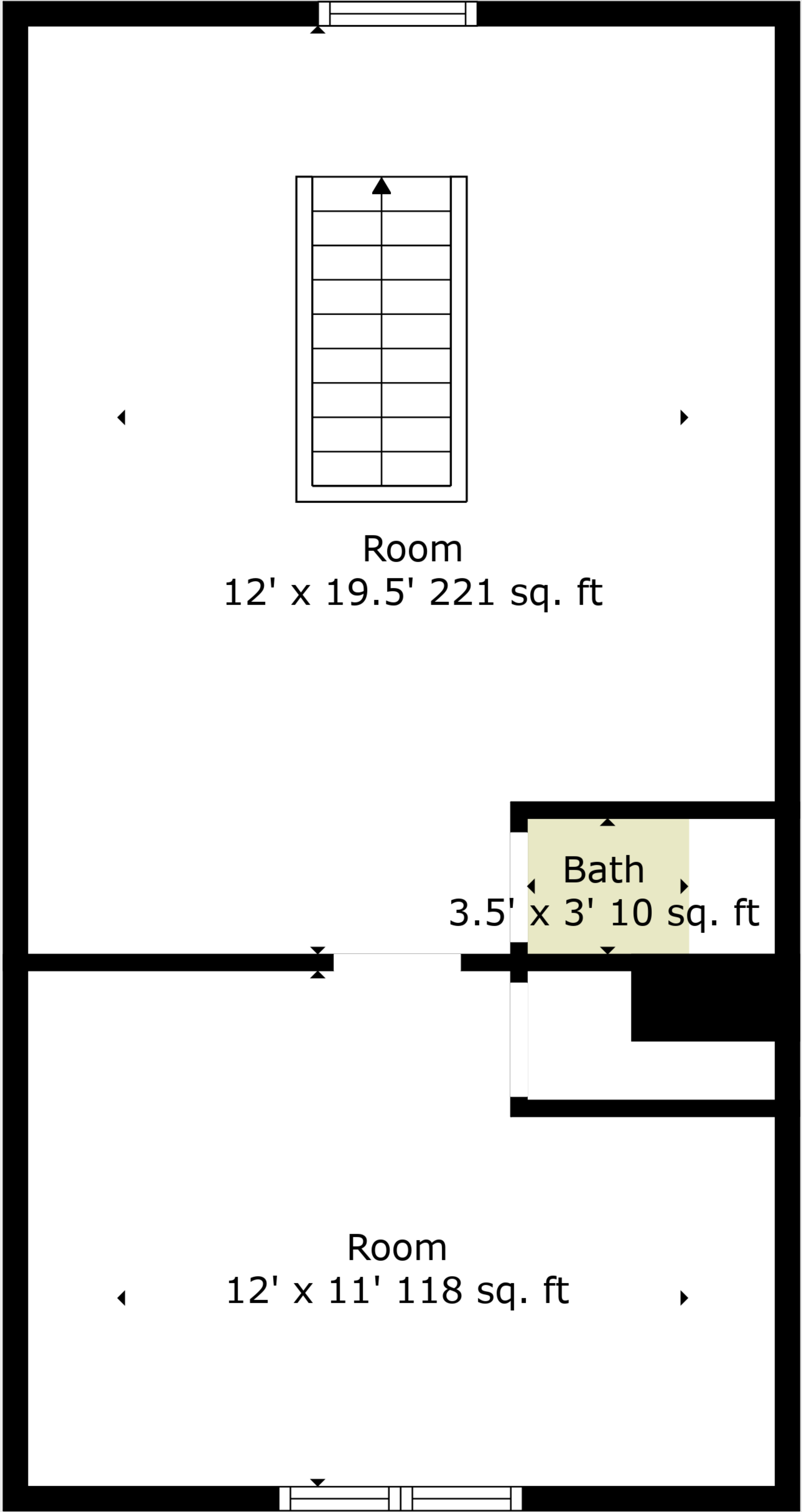
BELOW GROUND: 0 sq. ft, FLOOR 2: 694 sq. ft, FLOOR 3: 368 sq. ft  
EXCLUDED AREAS: BASEMENT: 694 sq. ft, DECK: 193 sq. ft, LOW CEILING: 111 sq. ft,  
WALLS: 157 sq. ft

Information Is Calculated By Cwalkerphotography.com; Deemed Highly Reliable But Not Guaranteed.



**TOTAL: 1062 sq. ft**  
BELOW GROUND: 0 sq. ft, FLOOR 2: 694 sq. ft, FLOOR 3: 368 sq. ft  
EXCLUDED AREAS: BASEMENT: 694 sq. ft, DECK: 193 sq. ft, LOW CEILING: 111 sq. ft,  
WALLS: 157 sq. ft





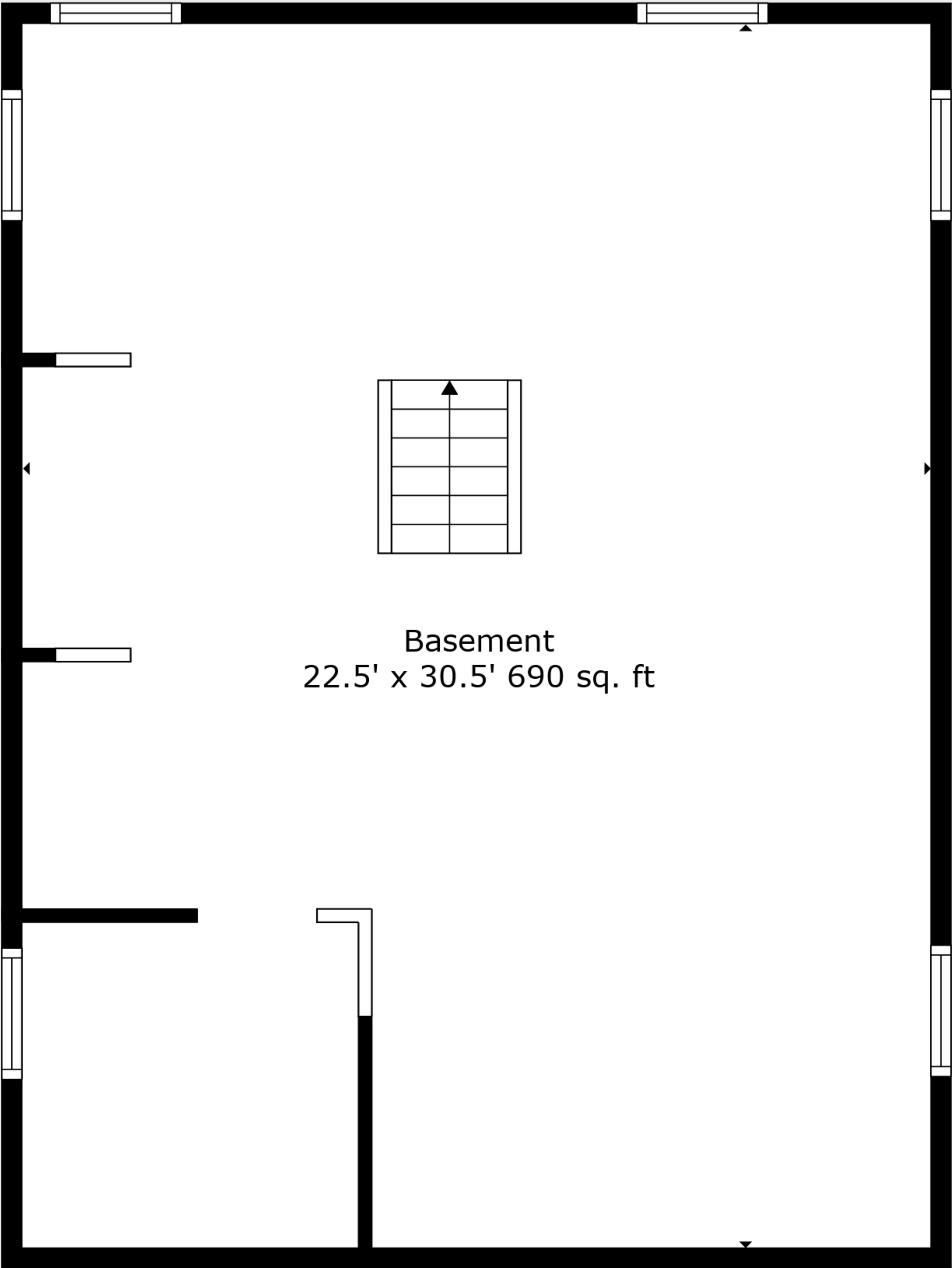
**TOTAL: 1062 sq. ft**

BELOW GROUND: 0 sq. ft, FLOOR 2: 694 sq. ft, FLOOR 3: 368 sq. ft

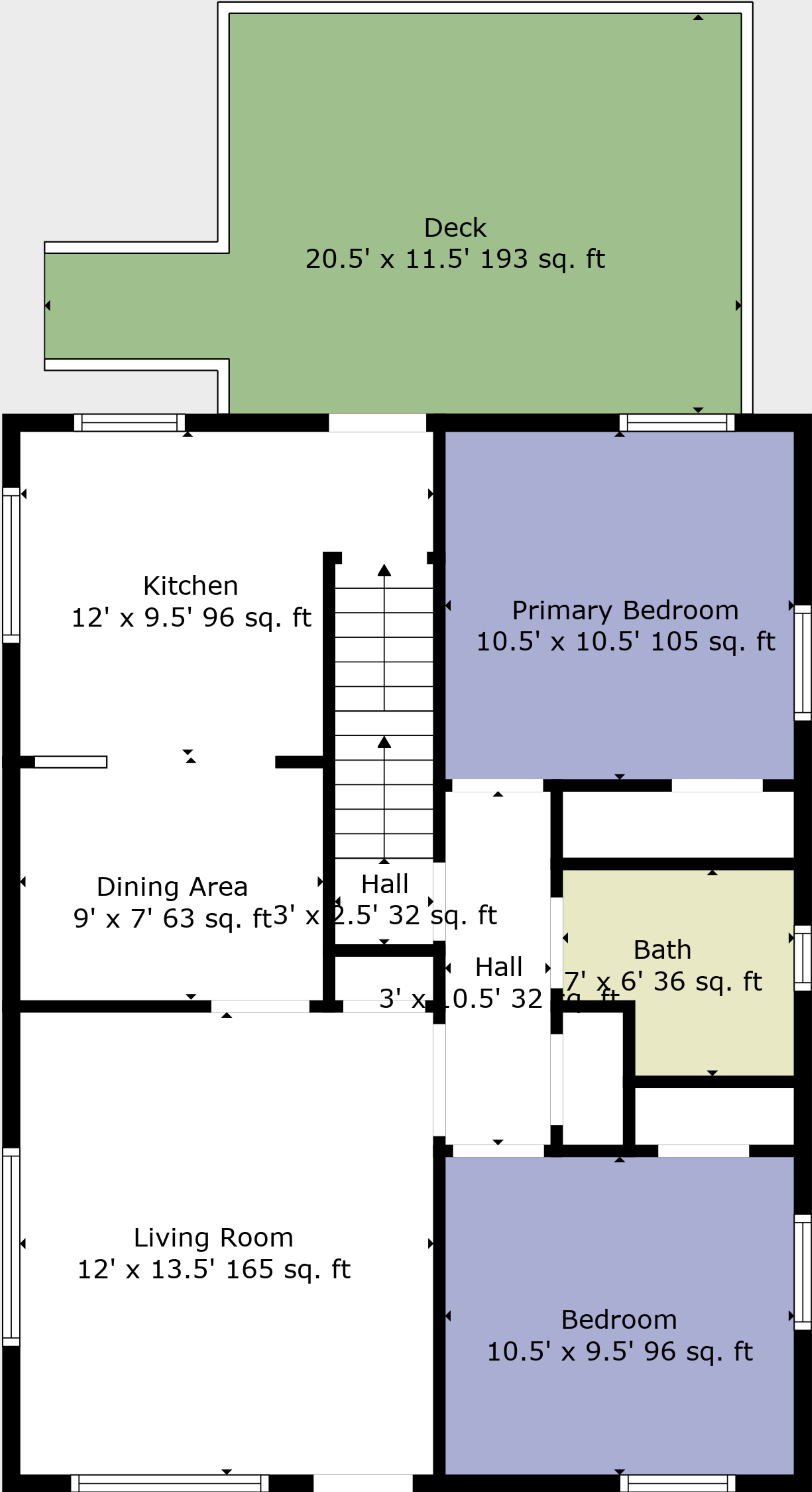
EXCLUDED AREAS: BASEMENT: 694 sq. ft, DECK: 193 sq. ft, LOW CEILING: 111 sq. ft,  
WALLS: 157 sq. ft



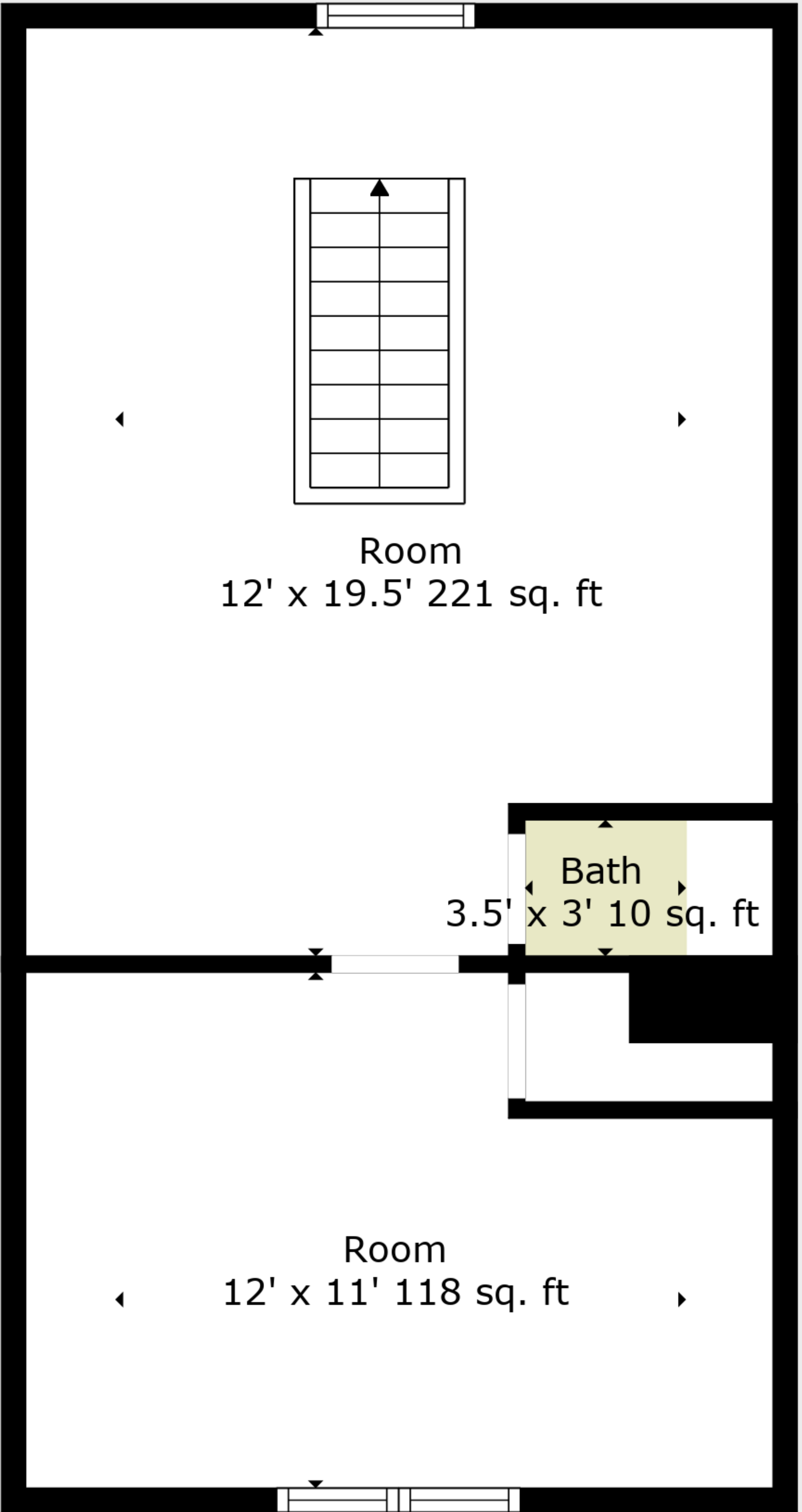




Floor 1



Floor 2



Floor 3

