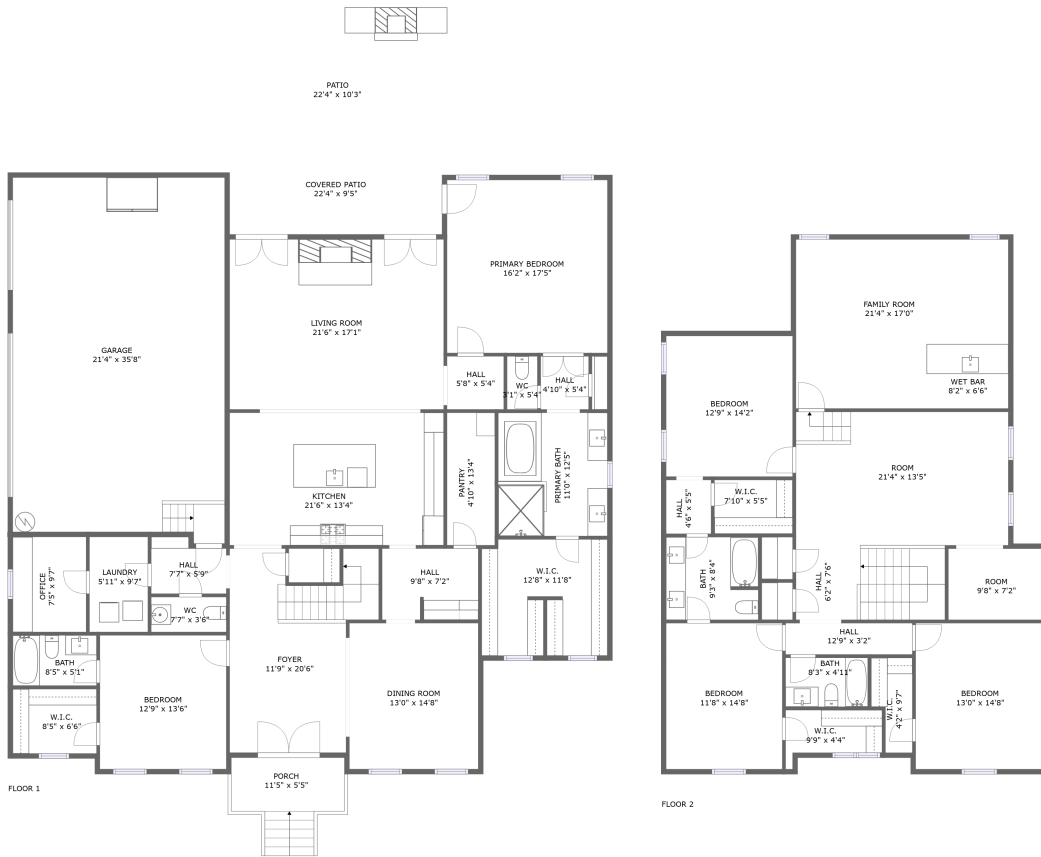


7214 Neills Branch Dr, College Grove, Williamson County, Tennessee, United States, 37046



Property Summary



2 floors



5 bedrooms



4 bathrooms



5,783 total sqft

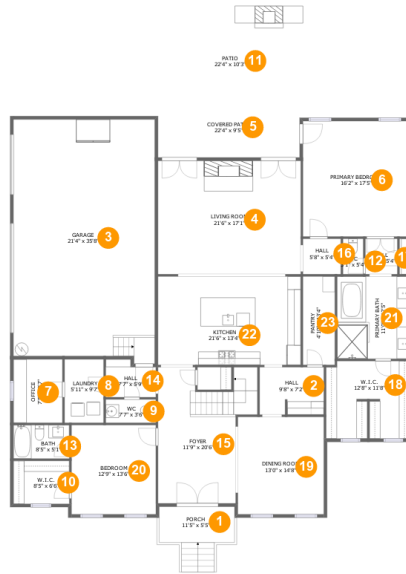


1 garages



4,429 Gross Living Area sqft

7214 Neills Branch Dr, College Grove, Williamson County, Tennessee, United States, 37046



Room Dimensions

Floor 1

Total sqft: 3921

Living area: 2567

#	Room name	Dimensions	Area (sqft)	Counted as Living Area
1	Porch	11'5" x 5'5"	91 sq. ft	No
2	Hall	9'8" x 7'2"	69 sq. ft	Yes
3	Garage	21'4" x 35'8"	763 sq. ft	No
4	Living Room	21'6" x 17'1"	368 sq. ft	Yes
5	Covered Patio	22'4" x 9'5"	205 sq. ft	No
6	Primary Bedroom	16'2" x 17'5"	281 sq. ft	Yes
7	Office	7'5" x 9'7"	71 sq. ft	Yes
8	Laundry	5'11" x 9'7"	56 sq. ft	Yes
9	Wc	7'7" x 3'6"	27 sq. ft	Yes
10	W.i.c.	8'5" x 6'6"	55 sq. ft	Yes
11	Patio	22'4" x 10'3"	263 sq. ft	No

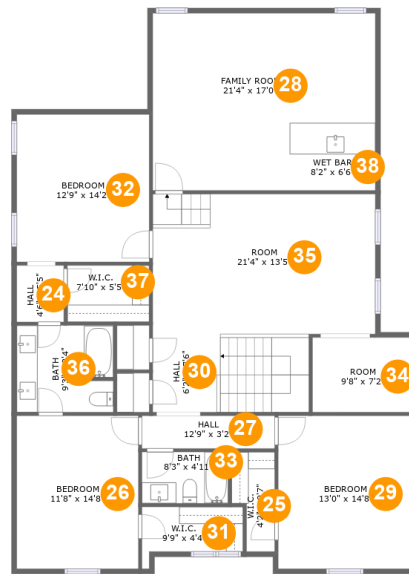
Scan captured on Thu, 30 May 2024 20:49:04 GMT

Information is calculated by CubiCasa technology; deemed highly reliable but not guaranteed.

**7214 Neills Branch Dr, College Grove, Williamson
County, Tennessee, United States, 37046**

#	Room name	Dimensions	Area (sqft)	Counted as Living Area
12	Wc	3'1" x 5'4"	16 sq. ft	Yes
13	Bath	8'5" x 5'1"	43 sq. ft	Yes
14	Hall	7'7" x 5'9"	39 sq. ft	Yes
15	Foyer	11'9" x 20'6"	242 sq. ft	Yes
16	Hall	5'8" x 5'4"	30 sq. ft	Yes
17	Hall	4'10" x 5'4"	26 sq. ft	Yes
18	W.i.c.	12'8" x 11'8"	143 sq. ft	Yes
19	Dining Room	13'0" x 14'8"	190 sq. ft	Yes
20	Bedroom	12'9" x 13'6"	171 sq. ft	Yes
21	Primary Bath	11'0" x 12'5"	136 sq. ft	Yes
22	Kitchen	21'6" x 13'4"	287 sq. ft	Yes
23	Pantry	4'10" x 13'4"	64 sq. ft	Yes

7214 Neills Branch Dr, College Grove, Williamson County, Tennessee, United States, 37046



Room Dimensions

Floor 2

Total sqft: 1862

Living area: 1862

#	Room name	Dimensions	Area (sqft)	Counted as Living Area
24	Hall	4'6" x 5'5"	24 sq. ft	Yes
25	W.i.c.	4'2" x 9'7"	33 sq. ft	Yes
26	Bedroom	11'8" x 14'8"	172 sq. ft	Yes
27	Hall	12'9" x 3'2"	40 sq. ft	Yes
28	Family Room	21'4" x 17'0"	310 sq. ft	Yes
29	Bedroom	13'0" x 14'8"	190 sq. ft	Yes
30	Hall	6'2" x 7'6"	112 sq. ft	Yes
31	W.i.c.	9'9" x 4'4"	43 sq. ft	Yes
32	Bedroom	12'9" x 14'2"	180 sq. ft	Yes
33	Bath	8'3" x 4'11"	41 sq. ft	Yes
34	Room	9'8" x 7'2"	69 sq. ft	Yes

Scan captured on Thu, 30 May 2024 20:49:04 GMT

Information is calculated by CubiCasa technology; deemed highly reliable but not guaranteed.

**7214 Neills Branch Dr, College Grove, Williamson
County, Tennessee, United States, 37046**

#	Room name	Dimensions	Area (sqft)	Counted as Living Area
35	Room	21'4" x 13'5"	287 sq. ft	Yes
36	Bath	9'3" x 8'4"	76 sq. ft	Yes
37	W.i.c.	7'10" x 5'5"	43 sq. ft	Yes
38	Wet Bar	8'2" x 6'6"	53 sq. ft	Yes

7214 Neills Branch Dr, College Grove, Williamson County, Tennessee, United States, 37046

1 Floor 1 - Porch



Dimensions: 11'5" x 5'5"
Area: 91 sq. ft
Counted as Living Area: No

Heated: No
Finished: Yes
Enclosed: No
Contiguous: Yes
Permitted: Yes
Wet Space: No
Addition: No
Conversion: No

2 Floor 1 - Hall



Dimensions: 9'8" x 7'2"
Area: 69 sq. ft
Counted as Living Area: Yes

Heated: Yes
Finished: Yes
Enclosed: Yes
Contiguous: Yes
Permitted: Yes
Wet Space: No
Addition: No
Conversion: No

7214 Neills Branch Dr, College Grove, Williamson County, Tennessee, United States, 37046

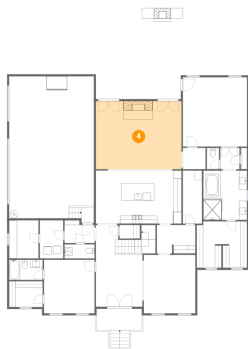
3 Floor 1 - Garage



Dimensions: 21'4" x 35'8"
Area: 763 sq. ft
Counted as Living Area: No

Heated: No
Finished: No
Enclosed: Yes
Contiguous: Yes
Permitted: Yes
Wet Space: No
Addition: No
Conversion: No

4 Floor 1 - Living Room



Dimensions: 21'6" x 17'1"
Area: 368 sq. ft
Counted as Living Area:
Yes

Heated: Yes
Finished: Yes
Enclosed: Yes
Contiguous:
Yes
Permitted: Yes
Wet Space: No
Addition: No
Conversion: No

5 Floor 1 - Covered Patio



Dimensions: 22'4" x 9'5"
Area: 205 sq. ft
Counted as Living Area: No

Heated: No
Finished: Yes
Enclosed: No
Contiguous: Yes
Permitted: Yes
Wet Space: No
Addition: No
Conversion: No

7214 Neills Branch Dr, College Grove, Williamson County, Tennessee, United States, 37046

6 Floor 1 - Primary Bedroom



Dimensions: 16'2" x 17'5"
Area: 281 sq. ft
Counted as Living Area:
Yes

Heated: Yes
Finished: Yes
Enclosed: Yes
Contiguous:
Yes
Permitted: Yes
Wet Space: No
Addition: No
Conversion: No

7 Floor 1 - Office



Dimensions: 7'5" x 9'7"
Area: 71 sq. ft
Counted as Living Area:
Yes

Heated: Yes
Finished: Yes
Enclosed: Yes
Contiguous:
Yes
Permitted: Yes
Wet Space: No
Addition: No
Conversion: No

8 Floor 1 - Laundry



Dimensions: 5'11" x 9'7"
Area: 56 sq. ft
Counted as Living Area:
Yes

Heated: Yes
Finished: Yes
Enclosed: Yes
Contiguous:
Yes
Permitted: Yes
Wet Space: No
Addition: No
Conversion: No

7214 Neills Branch Dr, College Grove, Williamson County, Tennessee, United States, 37046

9 Floor 1 - Wc



Dimensions: 7'7" x 3'6"
Area: 27 sq. ft
Counted as Living Area:
Yes

Heated: Yes
Finished: Yes
Enclosed: Yes
Contiguous:
Yes
Permitted: Yes
Wet Space: Yes
Addition: No
Conversion: No

10 Floor 1 - W.i.c.



Dimensions: 8'5" x 6'6"
Area: 55 sq. ft
Counted as Living Area:
Yes

Heated: Yes
Finished: Yes
Enclosed: Yes
Contiguous:
Yes
Permitted: Yes
Wet Space: No
Addition: No
Conversion: No

11 Floor 1 - Patio



Dimensions: 22'4" x 10'3"
Area: 263 sq. ft
Counted as Living Area: No

Heated: No
Finished: Yes
Enclosed: No
Contiguous: Yes
Permitted: Yes
Wet Space: No
Addition: No
Conversion: No

7214 Neills Branch Dr, College Grove, Williamson County, Tennessee, United States, 37046

12 Floor 1 - Wc



Dimensions: 3'1" x 5'4"
Area: 16 sq. ft
Counted as Living Area:
Yes

Heated: Yes
Finished: Yes
Enclosed: Yes
Contiguous:
Yes
Permitted: Yes
Wet Space: Yes
Addition: No
Conversion: No

13 Floor 1 - Bath



Dimensions: 8'5" x 5'1"
Area: 43 sq. ft
Counted as Living Area:
Yes

Heated: Yes
Finished: Yes
Enclosed: Yes
Contiguous:
Yes
Permitted: Yes
Wet Space: Yes
Addition: No
Conversion: No

14 Floor 1 - Hall



Dimensions: 7'7" x 5'9"
Area: 39 sq. ft
Counted as Living Area:
Yes

Heated: Yes
Finished: Yes
Enclosed: Yes
Contiguous:
Yes
Permitted: Yes
Wet Space: No
Addition: No
Conversion: No

7214 Neills Branch Dr, College Grove, Williamson County, Tennessee, United States, 37046

15 Floor 1 - Foyer



Dimensions: 11'9" x 20'6"
Area: 242 sq. ft
Counted as Living Area:
Yes

Heated: Yes
Finished: Yes
Enclosed: Yes
Contiguous:
Yes
Permitted: Yes
Wet Space: No
Addition: No
Conversion: No

16 Floor 1 - Hall



Dimensions: 5'8" x 5'4"
Area: 30 sq. ft
Counted as Living Area:
Yes

Heated: Yes
Finished: Yes
Enclosed: Yes
Contiguous:
Yes
Permitted: Yes
Wet Space: No
Addition: No
Conversion: No

17 Floor 1 - Hall



Dimensions: 4'10" x 5'4"
Area: 26 sq. ft
Counted as Living Area:
Yes

Heated: Yes
Finished: Yes
Enclosed: Yes
Contiguous:
Yes
Permitted: Yes
Wet Space: No
Addition: No
Conversion: No

7214 Neills Branch Dr, College Grove, Williamson County, Tennessee, United States, 37046

18 Floor 1 - W.i.c.



Dimensions: 12'8" x 11'8"
Area: 143 sq. ft
Counted as Living Area:
Yes

Heated: Yes
Finished: Yes
Enclosed: Yes
Contiguous:
Yes
Permitted: Yes
Wet Space: No
Addition: No
Conversion: No

19 Floor 1 - Dining Room



Dimensions: 13'0" x 14'8"
Area: 190 sq. ft
Counted as Living Area:
Yes

Heated: Yes
Finished: Yes
Enclosed: Yes
Contiguous:
Yes
Permitted: Yes
Wet Space: No
Addition: No
Conversion: No

20 Floor 1 - Bedroom



Dimensions: 12'9" x 13'6"
Area: 171 sq. ft
Counted as Living Area:
Yes

Heated: Yes
Finished: Yes
Enclosed: Yes
Contiguous:
Yes
Permitted: Yes
Wet Space: No
Addition: No
Conversion: No

7214 Neills Branch Dr, College Grove, Williamson County, Tennessee, United States, 37046

21 Floor 1 - Primary Bath



Dimensions: 11'0" x 12'5"
Area: 136 sq. ft
Counted as Living Area:
Yes

Heated: Yes
Finished: Yes
Enclosed: Yes
Contiguous:
Yes
Permitted: Yes
Wet Space: Yes
Addition: No
Conversion: No

22 Floor 1 - Kitchen



Dimensions: 21'6" x 13'4"
Area: 287 sq. ft
Counted as Living Area:
Yes

Heated: Yes
Finished: Yes
Enclosed: Yes
Contiguous:
Yes
Permitted: Yes
Wet Space: No
Addition: No
Conversion: No

23 Floor 1 - Pantry

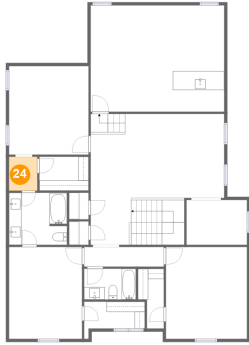


Dimensions: 4'10" x 13'4"
Area: 64 sq. ft
Counted as Living Area:
Yes

Heated: Yes
Finished: Yes
Enclosed: Yes
Contiguous:
Yes
Permitted: Yes
Wet Space: No
Addition: No
Conversion: No

7214 Neills Branch Dr, College Grove, Williamson County, Tennessee, United States, 37046

24 Floor 2 - Hall



Dimensions: 4'6" x 5'5"
Area: 24 sq. ft
Counted as Living Area:
Yes

Heated: Yes
Finished: Yes
Enclosed: Yes
Contiguous:
Yes
Permitted: Yes
Wet Space: No
Addition: No
Conversion: No

25 Floor 2 - W.i.c.



Dimensions: 4'2" x 9'7"
Area: 33 sq. ft
Counted as Living Area:
Yes

Heated: Yes
Finished: Yes
Enclosed: Yes
Contiguous:
Yes
Permitted: Yes
Wet Space: No
Addition: No
Conversion: No

26 Floor 2 - Bedroom

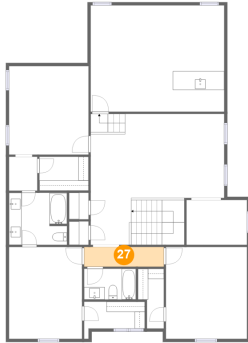


Dimensions: 11'8" x 14'8"
Area: 172 sq. ft
Counted as Living Area:
Yes

Heated: Yes
Finished: Yes
Enclosed: Yes
Contiguous:
Yes
Permitted: Yes
Wet Space: No
Addition: No
Conversion: No

7214 Neills Branch Dr, College Grove, Williamson County, Tennessee, United States, 37046

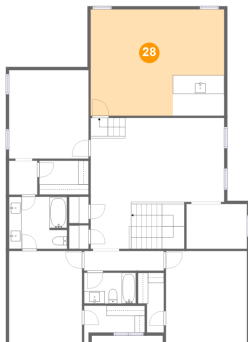
27 Floor 2 - Hall



Dimensions: 12'9" x 3'2"
Area: 40 sq. ft
Counted as Living Area:
Yes

Heated: Yes
Finished: Yes
Enclosed: Yes
Contiguous:
Yes
Permitted: Yes
Wet Space: No
Addition: No
Conversion: No

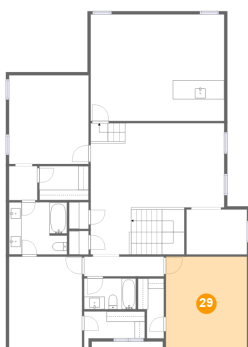
28 Floor 2 - Family Room



Dimensions: 21'4" x 17'0"
Area: 310 sq. ft
Counted as Living Area:
Yes

Heated: Yes
Finished: Yes
Enclosed: Yes
Contiguous:
Yes
Permitted: Yes
Wet Space: No
Addition: No
Conversion: No

29 Floor 2 - Bedroom

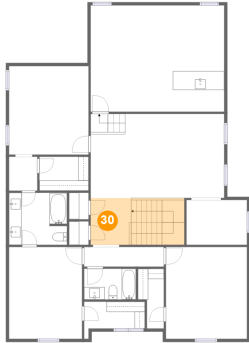


Dimensions: 13'0" x 14'8"
Area: 190 sq. ft
Counted as Living Area:
Yes

Heated: Yes
Finished: Yes
Enclosed: Yes
Contiguous:
Yes
Permitted: Yes
Wet Space: No
Addition: No
Conversion: No

7214 Neills Branch Dr, College Grove, Williamson County, Tennessee, United States, 37046

30 Floor 2 - Hall



Dimensions: 6'2" x 7'6"
Area: 112 sq. ft
Counted as Living Area:
Yes

Heated: Yes
Finished: Yes
Enclosed: Yes
Contiguous:
Yes
Permitted: Yes
Wet Space: No
Addition: No
Conversion: No

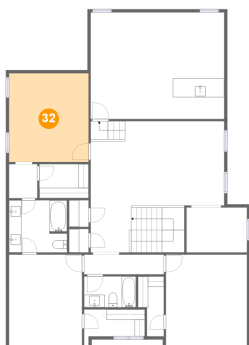
31 Floor 2 - W.i.c.



Dimensions: 9'9" x 4'4"
Area: 43 sq. ft
Counted as Living Area:
Yes

Heated: Yes
Finished: Yes
Enclosed: Yes
Contiguous:
Yes
Permitted: Yes
Wet Space: No
Addition: No
Conversion: No

32 Floor 2 - Bedroom

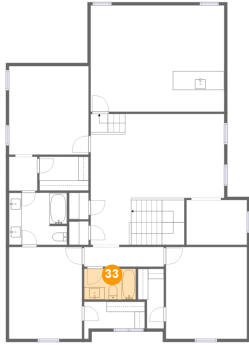


Dimensions: 12'9" x 14'2"
Area: 180 sq. ft
Counted as Living Area:
Yes

Heated: Yes
Finished: Yes
Enclosed: Yes
Contiguous:
Yes
Permitted: Yes
Wet Space: No
Addition: No
Conversion: No

7214 Neills Branch Dr, College Grove, Williamson County, Tennessee, United States, 37046

33 Floor 2 - Bath



Dimensions: 8'3" x 4'11"
Area: 41 sq. ft
Counted as Living Area:
Yes

Heated: Yes
Finished: Yes
Enclosed: Yes
Contiguous:
Yes
Permitted: Yes
Wet Space: Yes
Addition: No
Conversion: No

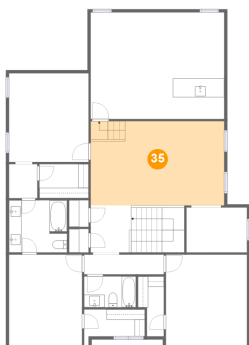
34 Floor 2 - Room



Dimensions: 9'8" x 7'2"
Area: 69 sq. ft
Counted as Living Area:
Yes

Heated: Yes
Finished: Yes
Enclosed: Yes
Contiguous:
Yes
Permitted: Yes
Wet Space: No
Addition: No
Conversion: No

35 Floor 2 - Room

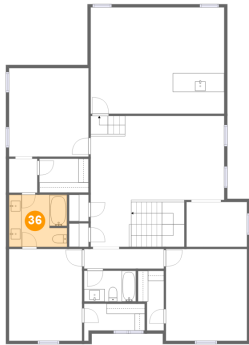


Dimensions: 21'4" x 13'5"
Area: 287 sq. ft
Counted as Living Area:
Yes

Heated: Yes
Finished: Yes
Enclosed: Yes
Contiguous:
Yes
Permitted: Yes
Wet Space: No
Addition: No
Conversion: No

7214 Neills Branch Dr, College Grove, Williamson County, Tennessee, United States, 37046

36 Floor 2 - Bath



Dimensions: 9'3" x 8'4"
Area: 76 sq. ft
Counted as Living Area:
Yes

Heated: Yes
Finished: Yes
Enclosed: Yes
Contiguous:
Yes
Permitted: Yes
Wet Space: Yes
Addition: No
Conversion: No

37 Floor 2 - W.i.c.



Dimensions: 7'10" x 5'5"
Area: 43 sq. ft
Counted as Living Area:
Yes

Heated: Yes
Finished: Yes
Enclosed: Yes
Contiguous:
Yes
Permitted: Yes
Wet Space: No
Addition: No
Conversion: No

38 Floor 2 - Wet Bar



Dimensions: 8'2" x 6'6"
Area: 53 sq. ft
Counted as Living Area:
Yes

Heated: Yes
Finished: Yes
Enclosed: Yes
Contiguous:
Yes
Permitted: Yes
Wet Space: No
Addition: No
Conversion: No