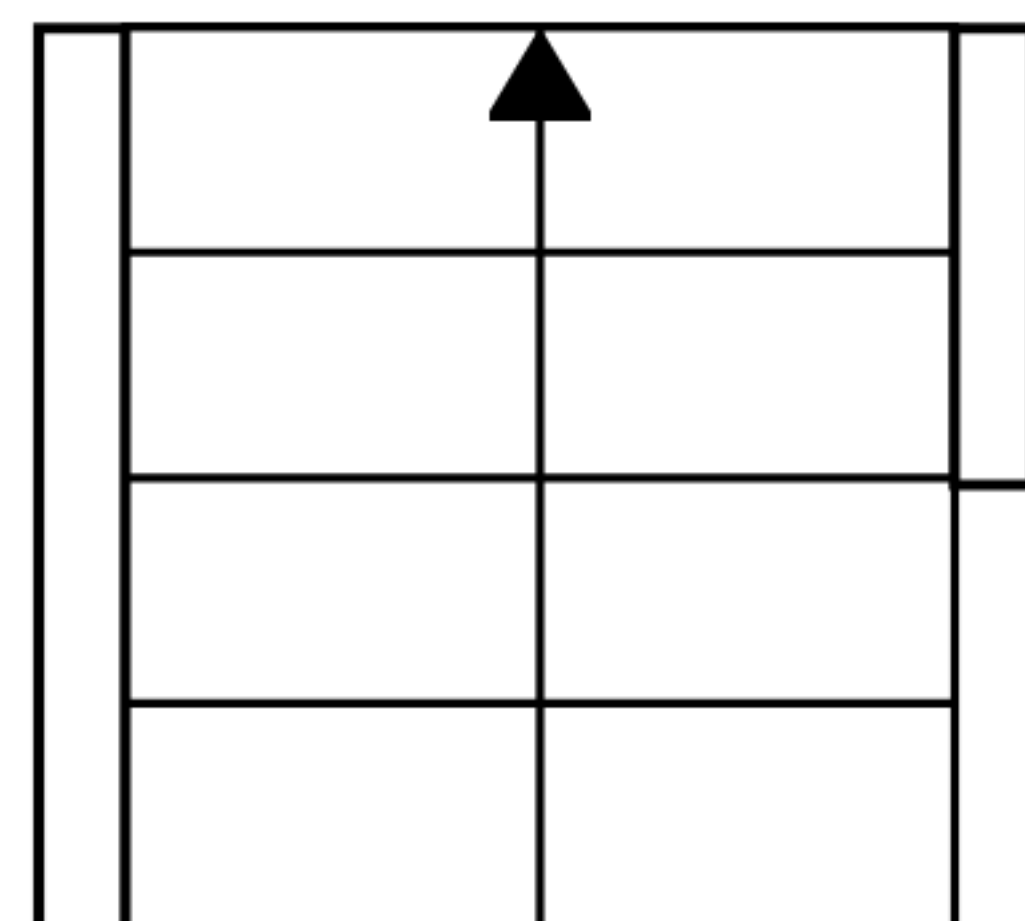


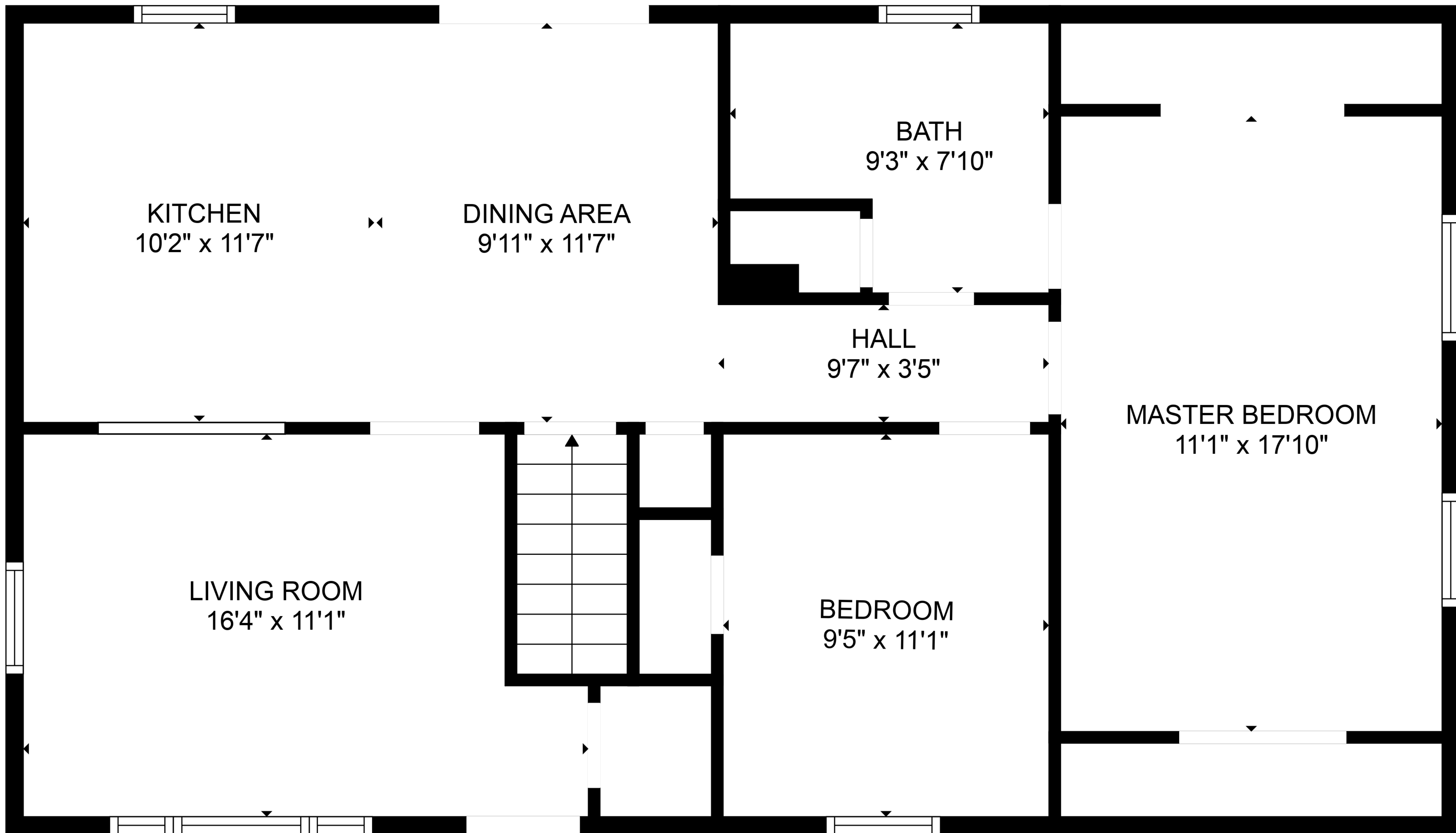
BASEMENT
28'5" x 23'0"

BATH
7'9" x 6'11"

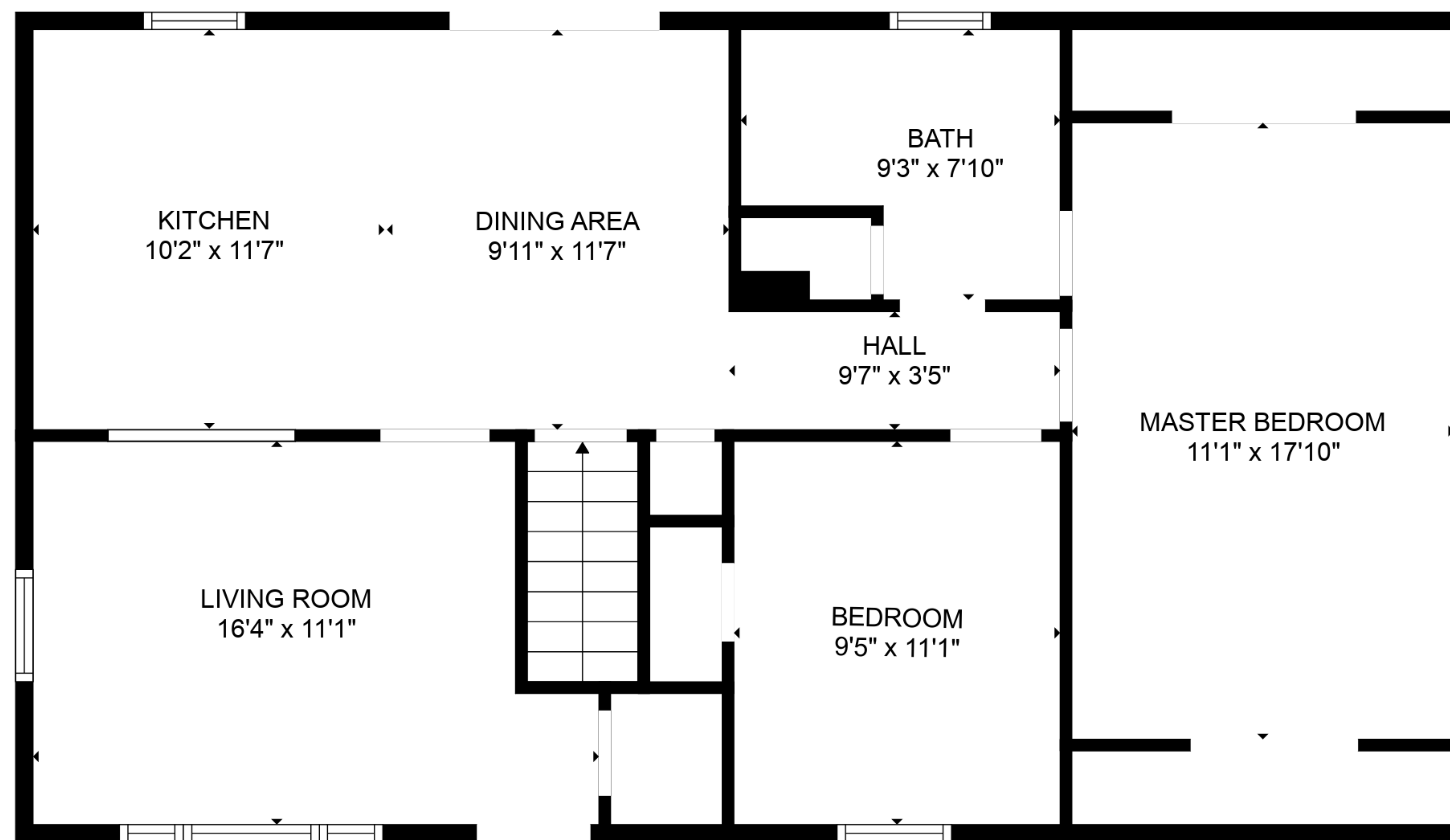
BEDROOM
9'9" x 20'4"



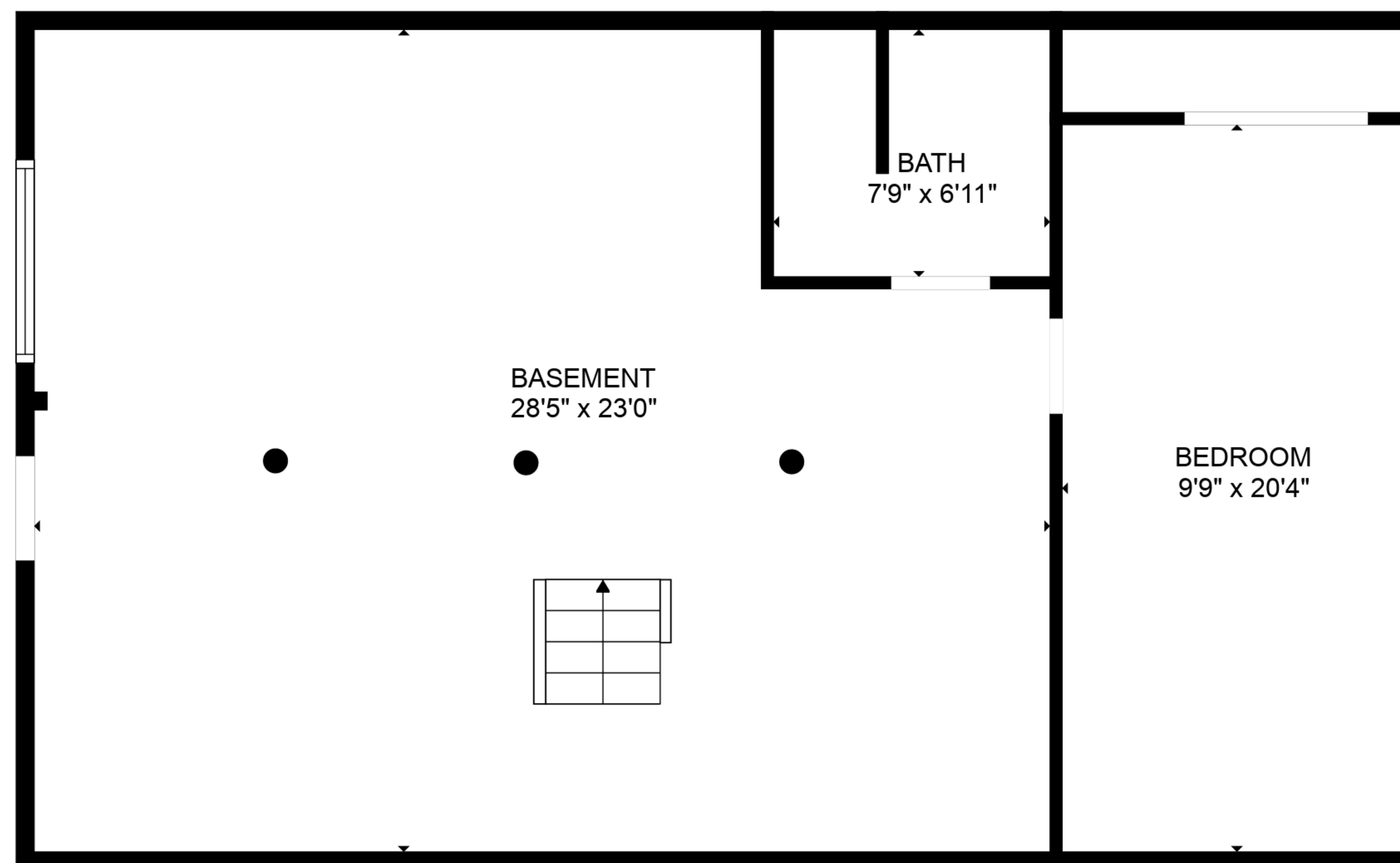
TOTAL: 1239 sq. ft
Below Ground: 292 sq. ft, FLOOR 2: 947 sq. ft
EXCLUDED AREAS: BASEMENT: 595 sq. ft



TOTAL: 1239 sq. ft
Below Ground: 292 sq. ft, FLOOR 2: 947 sq. ft
EXCLUDED AREAS: BASEMENT: 595 sq. ft



FLOOR 2



FLOOR 1

TOTAL: 1239 sq. ft
 Below Ground: 292 sq. ft, FLOOR 2: 947 sq. ft
 EXCLUDED AREAS: BASEMENT: 595 sq. ft