

605 Shelby Farms Place, Alabaster, Alabama 35007, United States



Total Area: 2327 sq. ft

Floor 1: 1786 sq. ft, Floor 2: 541 sq. ft

Excluded: Garage 396 sq. ft, Screened porch 142 sq. ft, Porch 108 sq. ft, Covered patio 46 sq. ft, Fireplace 16 sq. ft, Walls: 187 sq. ft

Property summary

 **2** Floors

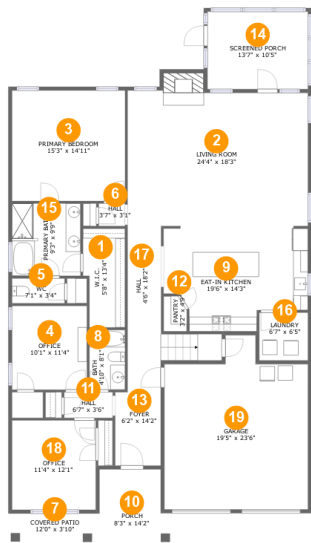
 **2** Bedrooms

 **3** Bathrooms

 **1** Garages

Home report

605 Shelby Farms Place, Alabaster, Alabama 35007, United States



Room dimensions

Floor 1

Total:1786sqft

Excluded: 708sqft

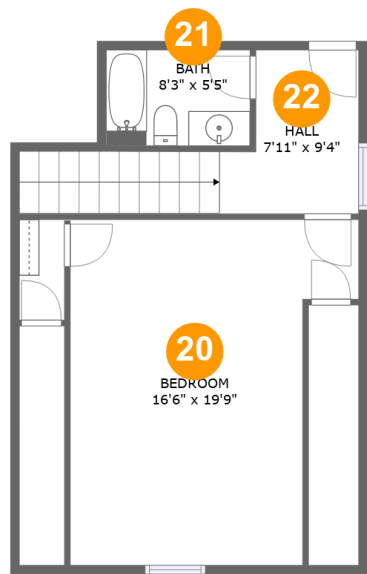
#		Max Dimensions	sqft	Included
1	W.I.C.	5'8" x 13'4"	70 sq. ft	Yes
2	Living Room	24'4" x 18'3"	454 sq. ft	Yes
3	Primary Bedroom	15'3" x 14'11"	228 sq. ft	Yes
4	Office	10'1" x 11'4"	114 sq. ft	Yes
5	WC	7'1" x 3'4"	24 sq. ft	Yes
6	Hall	3'7" x 3'1"	11 sq. ft	Yes
7	Covered Patio	12'0" x 3'10"	46 sq. ft	No
8	Bath	4'10" x 8'1"	39 sq. ft	Yes
9	Eat-in Kitchen	19'6" x 14'3"	240 sq. ft	Yes
10	Porch	8'3" x 14'2"	108 sq. ft	No
11	Hall	6'7" x 3'6"	23 sq. ft	Yes

Home report

605 Shelby Farms Place, Alabaster, Alabama 35007, United States

#		Max Dimensions	sqft	Included
12	Pantry	3'2" x 4'9"	14 sq. ft	Yes
13	Foyer	6'2" x 14'2"	80 sq. ft	Yes
14	Screened Porch	13'7" x 10'5"	142 sq. ft	No
15	Primary Bath	9'3" x 9'9"	90 sq. ft	Yes
16	Laundry	6'7" x 6'5"	42 sq. ft	Yes
17	Hall	4'6" x 18'2"	111 sq. ft	Yes
18	Office	11'4" x 12'1"	136 sq. ft	Yes
19	Garage	19'5" x 23'6"	396 sq. ft	No

605 Shelby Farms Place, Alabaster, Alabama 35007, United States



Room dimensions

Floor 2 Total:541sqft Excluded: 0sqft

#		Max Dimensions	sqft	Included
20	Bedroom	16'6" x 19'9"	277 sq. ft	Yes
21	Bath	8'3" x 5'5"	45 sq. ft	Yes
22	Hall	7'11" x 9'4"	103 sq. ft	Yes

605 Shelby Farms Place, Alabaster, Alabama 35007, United States

1 Floor 1 - W.I.C.



Max Dimensions: 5'8" x 13'4"
Calculated Area: 70 sq. ft
Included: Yes

Heated: Yes
Finished: Yes
Enclosed: Yes
Contiguous: Yes
Permitted: Yes
Wet space: No
Addition: No
Conversion: No

2 Floor 1 - Living Room



Max Dimensions: 24'4" x 18'3"
Calculated Area: 454 sq. ft
Included: Yes

Heated: Yes
Finished: Yes
Enclosed: Yes
Contiguous: Yes
Permitted: Yes
Wet space: No
Addition: No
Conversion: No

605 Shelby Farms Place, Alabaster, Alabama 35007, United States

3 Floor 1 - Primary Bedroom



Max Dimensions: 15'3" x 14'11"
Calculated Area: 228 sq. ft
Included: Yes

Heated: Yes
Finished: Yes
Enclosed: Yes
Contiguous: Yes
Permitted: Yes
Wet space: No
Addition: No
Conversion: No

4 Floor 1 - Office



Max Dimensions: 10'1" x 11'4"
Calculated Area: 114 sq. ft
Included: Yes

Heated: Yes
Finished: Yes
Enclosed: Yes
Contiguous: Yes
Permitted: Yes
Wet space: No
Addition: No
Conversion: No

5 Floor 1 - WC



Max Dimensions: 7'1" x 3'4"
Calculated Area: 24 sq. ft
Included: Yes

Heated: Yes
Finished: Yes
Enclosed: Yes
Contiguous: Yes
Permitted: Yes
Wet space: Yes
Addition: No
Conversion: No

605 Shelby Farms Place, Alabaster, Alabama 35007, United States

6 Floor 1 - Hall



Max Dimensions: 3'7" x 3'1"
Calculated Area: 11 sq. ft
Included: Yes

Heated: Yes
Finished: Yes
Enclosed: Yes
Contiguous: Yes
Permitted: Yes
Wet space: No
Addition: No
Conversion: No

7 Floor 1 - Covered Patio



Max Dimensions: 12'0" x 3'10"
Calculated Area: 46 sq. ft
Included: No

Heated: No
Finished: Yes
Enclosed: No
Contiguous: Yes
Permitted: Yes
Wet space: No
Addition: No
Conversion: No

8 Floor 1 - Bath



Max Dimensions: 4'10" x 8'1"
Calculated Area: 39 sq. ft
Included: Yes

Heated: Yes
Finished: Yes
Enclosed: Yes
Contiguous: Yes
Permitted: Yes
Wet space: Yes
Addition: No
Conversion: No

605 Shelby Farms Place, Alabaster, Alabama 35007, United States

9 Floor 1 - Eat-in Kitchen



Max Dimensions: 19'6" x 14'3"
Calculated Area: 240 sq. ft
Included: Yes

Heated: Yes
Finished: Yes
Enclosed: Yes
Contiguous: Yes
Permitted: Yes
Wet space: No
Addition: No
Conversion: No

10 Floor 1 - Porch



Max Dimensions: 8'3" x 14'2"
Calculated Area: 108 sq. ft
Included: No

Heated: No
Finished: Yes
Enclosed: No
Contiguous: Yes
Permitted: Yes
Wet space: No
Addition: No
Conversion: No

11 Floor 1 - Hall



Max Dimensions: 6'7" x 3'6"
Calculated Area: 23 sq. ft
Included: Yes

Heated: Yes
Finished: Yes
Enclosed: Yes
Contiguous: Yes
Permitted: Yes
Wet space: No
Addition: No
Conversion: No

605 Shelby Farms Place, Alabaster, Alabama 35007, United States

12 Floor 1 - Pantry



Max Dimensions: 3'2" x 4'9"
Calculated Area: 14 sq. ft
Included: Yes

Heated: Yes
Finished: Yes
Enclosed: Yes
Contiguous: Yes
Permitted: Yes
Wet space: No
Addition: No
Conversion: No

13 Floor 1 - Foyer



Max Dimensions: 6'2" x 14'2"
Calculated Area: 80 sq. ft
Included: Yes

Heated: Yes
Finished: Yes
Enclosed: Yes
Contiguous: Yes
Permitted: Yes
Wet space: No
Addition: No
Conversion: No

14 Floor 1 - Screened Porch



Max Dimensions: 13'7" x 10'5"
Calculated Area: 142 sq. ft
Included: No

Heated: No
Finished: Yes
Enclosed: No
Contiguous: Yes
Permitted: Yes
Wet space: No
Addition: No
Conversion: No

605 Shelby Farms Place, Alabaster, Alabama 35007, United States

15 Floor 1 - Primary Bath



Max Dimensions: 9'3" x 9'9"
Calculated Area: 90 sq. ft
Included: Yes

Heated: Yes
Finished: Yes
Enclosed: Yes
Contiguous: Yes
Permitted: Yes
Wet space: Yes
Addition: No
Conversion: No

16 Floor 1 - Laundry



Max Dimensions: 6'7" x 6'5"
Calculated Area: 42 sq. ft
Included: Yes

Heated: Yes
Finished: Yes
Enclosed: Yes
Contiguous: Yes
Permitted: Yes
Wet space: No
Addition: No
Conversion: No

17 Floor 1 - Hall



Max Dimensions: 4'6" x 18'2"
Calculated Area: 111 sq. ft
Included: Yes

Heated: Yes
Finished: Yes
Enclosed: Yes
Contiguous: Yes
Permitted: Yes
Wet space: No
Addition: No
Conversion: No

605 Shelby Farms Place, Alabaster, Alabama 35007, United States

18 Floor 1 - Office



Max Dimensions: 11'4" x 12'1"
Calculated Area: 136 sq. ft
Included: Yes

Heated: Yes
Finished: Yes
Enclosed: Yes
Contiguous: Yes
Permitted: Yes
Wet space: No
Addition: No
Conversion: No

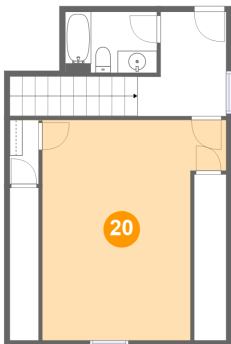
19 Floor 1 - Garage



Max Dimensions: 19'5" x 23'6"
Calculated Area: 396 sq. ft
Included: No

Heated: No
Finished: No
Enclosed: Yes
Contiguous: Yes
Permitted: Yes
Wet space: No
Addition: No
Conversion: No

20 Floor 2 - Bedroom

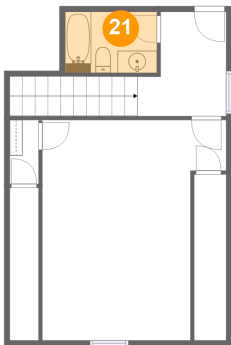


Max Dimensions: 16'6" x 19'9"
Calculated Area: 277 sq. ft
Included: Yes

Heated: Yes
Finished: Yes
Enclosed: Yes
Contiguous: Yes
Permitted: Yes
Wet space: No
Addition: No
Conversion: No

605 Shelby Farms Place, Alabaster, Alabama 35007, United States

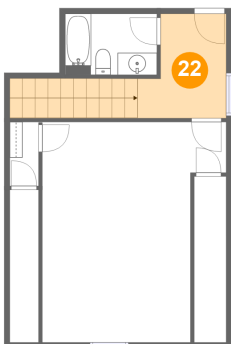
21 Floor 2 - Bath



Max Dimensions: 8'3" x 5'5"
Calculated Area: 45 sq. ft
Included: Yes

Heated: Yes
Finished: Yes
Enclosed: Yes
Contiguous: Yes
Permitted: Yes
Wet space: Yes
Addition: No
Conversion: No

22 Floor 2 - Hall



Max Dimensions: 7'11" x 9'4"
Calculated Area: 103 sq. ft
Included: Yes

Heated: Yes
Finished: Yes
Enclosed: Yes
Contiguous: Yes
Permitted: Yes
Wet space: No
Addition: No
Conversion: No